

# GBT PRODUCT CATALOGUE

2024



Oceania Edition

**EMS**   
MAKE ME SMILE.

# OUR SWISS PRODUCTS

WHY GBT .....	4
GBT COMPASS.....	6
GBT LOUNGE.....	8
AIRFLOW® PROPHYLAXIS MASTER.....	10
AIRFLOW® STATION .....	12
AIRFLOW® ONE .....	13
AIRFLOW® PLUS POWDER .....	16
EMS BIOFILM DISCLOSER.....	21
HANDPIECES .....	25
GBT FLOWCONTROL® .....	26
PIEZON® INSTRUMENTS .....	29
HYGIENE SOLUTIONS.....	34
GBT VISIGATE® .....	35
ACCESSORIES.....	36
GBT CERTIFIED.....	38
EMS WORLDWIDE .....	41



# WHY GBT?

- 1 A GAME CHANGER **FOR BETTER ORAL PROPHYLAXIS**
- 2 GOOD ORAL HEALTH = **HEALTHY PATIENT**
- 3 BEST CLINICAL PROTOCOL = **BEST CLINICAL RESULTS.**  
GBT REDUCES THE RISK OF CARIES, GINGIVITIS AND PERIODONTAL DISEASE.  
“An efficient treatment can only be obtained after complete biofilm removal.”  
Nicole Einemann and Manuela Cordes, Dental Hygienists, Dr. Arendt Dental, Bremerhaven, Germany
- 4 **PATIENTS WANT GBT. NOTHING ELSE.**  
NO MORE FEAR OF PAIN. NO MORE DISCOMFORT.  
ONCE EXPERIENCED, PATIENTS LOVE GBT,  
ESPECIALLY CHILDREN.
- 5 **SATISFIED CLINICIANS,**  
RELAXED PATIENTS. EFFICIENT, SYSTEMATIC  
WORKFLOW WITH ERGONOMIC INSTRUMENTS.  
BYE-BYE STRESS, BYE-BYE CARPAL TUNNEL, BYE-BYE BIOFILM.
- 6 **SUCCESSFUL DENTAL PRACTICES -**  
GOOD MONEY FOR GOOD WORK. ENTHUSIASTIC PATIENTS WILL  
RECOMMEND THE **GBT-CERTIFIED** PRACTICE.
- 7 ORAL MEDICINE & PREVENTION ARE THE **FUTURE OF DENTISTRY.** GBT IS THE FUTURE OF PREVENTION.
- 8 GBT IS A SURPRISING **“I FEEL GOOD EXPERIENCE”.**  
STATE-OF-THE-ART IS FAVORED BY PATIENTS.  
AND BY CLINICIANS.



Reserve a free GBT Demo: [gbt-dental.com/GBT-DEMO-ENG](http://gbt-dental.com/GBT-DEMO-ENG)

# HOW TO DO GBT?



## 01 ASSESSMENT AND INFECTION CONTROL

Protect your patients and your practice team from infections. Start GBT by rinsing for 40 seconds with an antimicrobial mouth rinse

## 02 DISCLOSE

Make the oral biofilm visible by disclosing and explain the **WHY** to the patient. Scientific evidence confirms that oral biofilm causes 95 % of all dental problems: caries, gingivitis and periodontitis.

## 03 MOTIVATE

Emphasise the importance of oral home care and professional prevention. Instruct your patients in oral hygiene.

## 04 AIRFLOW® MAX

Eliminate the disclosed biofilm supra- and subgingivally up to 4mm with AIRFLOW® MAX and AIRFLOW® PLUS Powder. The original **AIR-FLOWING®** is minimally invasive and pain-free.\*

## 05 PERIOFLOW®

Remove oral biofilm in deep pockets up to 9mm with PERIOFLOW® Nozzle and AIRFLOW® PLUS Powder.\*

## 06 PIEZON® PS / PI MAX

Gently remove calculus on natural teeth with the original PIEZON® NO PAIN PS (Perio Slim) Instrument and around implants, restorations and orthodontic appliances with the new PIEZON® PI (Peri Implant) MAX Instrument.\*

## 07 CHECK

Check whether oral biofilm and calculus have been removed completely and whether previously hidden caries is now visible. Conventional professional teeth cleaning removes only 50 % of oral biofilm in areas that are difficult to reach.

Source: Stiftung Warentest 7/2015. **NO MORE POLISHING.** Polishing and grinding with abrasive pastes is truly no longer necessary. Why produce unnecessary smear layers?

## 08 RECALL

Would your patient like to answer the GBT questionnaire?  
This is helpful for a successful GBT treatment.  
Schedule the next prophylaxis appointment.

\*Learn more about how GBT works in practice, how to avoid dust when AIR-FLOWING®, how to use PERIOFLOW® correctly or how to minimize the risk of emphysema at the Swiss Dental Academy (SDA): [sda.dental/Contact-GBT-Expert](http://sda.dental/Contact-GBT-Expert)



**A REGULAR GBT RECALL GUARANTEES  
LASTING ORAL HEALTH FOR YOUR PATIENTS.**

To book your free GBT demo visit: [professional.airflowdentalspa.com.au/  
free-test-drive](http://professional.airflowdentalspa.com.au/free-test-drive) (includes 1 CPD hour)

## 08 RECALL

HEALTHY PATIENT = HAPPY PATIENT

- Schedule recall frequency according to risk assessment
- Ask your patient if he or she liked the treatment

## 07 CHECK

MAKE YOUR PATIENT SMILE

- Do a final check for remaining biofilm
- Ensure calculus is fully removed
  - Accurately diagnose caries
  - Protect with fluoride
  - No polishing anymore

## 06 PIEZON® PS

REMOVE REMAINING CALCULUS

- Use the minimally invasive EMS PIEZON® PS Instrument supra- and subgingivally up to 10 mm
- Clean > 10 mm pockets with mini curette
  - Use EMS PIEZON® PI MAX Instrument around implants up to 3 mm subgingivally and on restorations

## 05 PERIOFLOW®

REMOVE BIOFILM IN >4 TO 9 MM POCKETS

- Use AIRFLOW® PLUS Powder on natural teeth in deep pockets and root furcations and on implants
- Use new and slimmer PERIOFLOW® Nozzle

## 01 ASSESSMENT AND INFECTION CONTROL

ASSESS EVERY CLINICAL CASE AND IMPLEMENT HYGIENE MEASURES

- Start by rinsing with an antimicrobial mouth rinse
- Assess teeth, gingiva and periodontal tissues
- Assess implants and peri-implant tissues

## 02 DISCLOSE

MAKE BIOFILM VISIBLE

- Highlight to patients the disclosed biofilm and their problematic areas with EMS Biofilm Discloser
- The color will guide biofilm removal
  - Once biofilm is removed, calculus is easier to detect

## 03 MOTIVATE

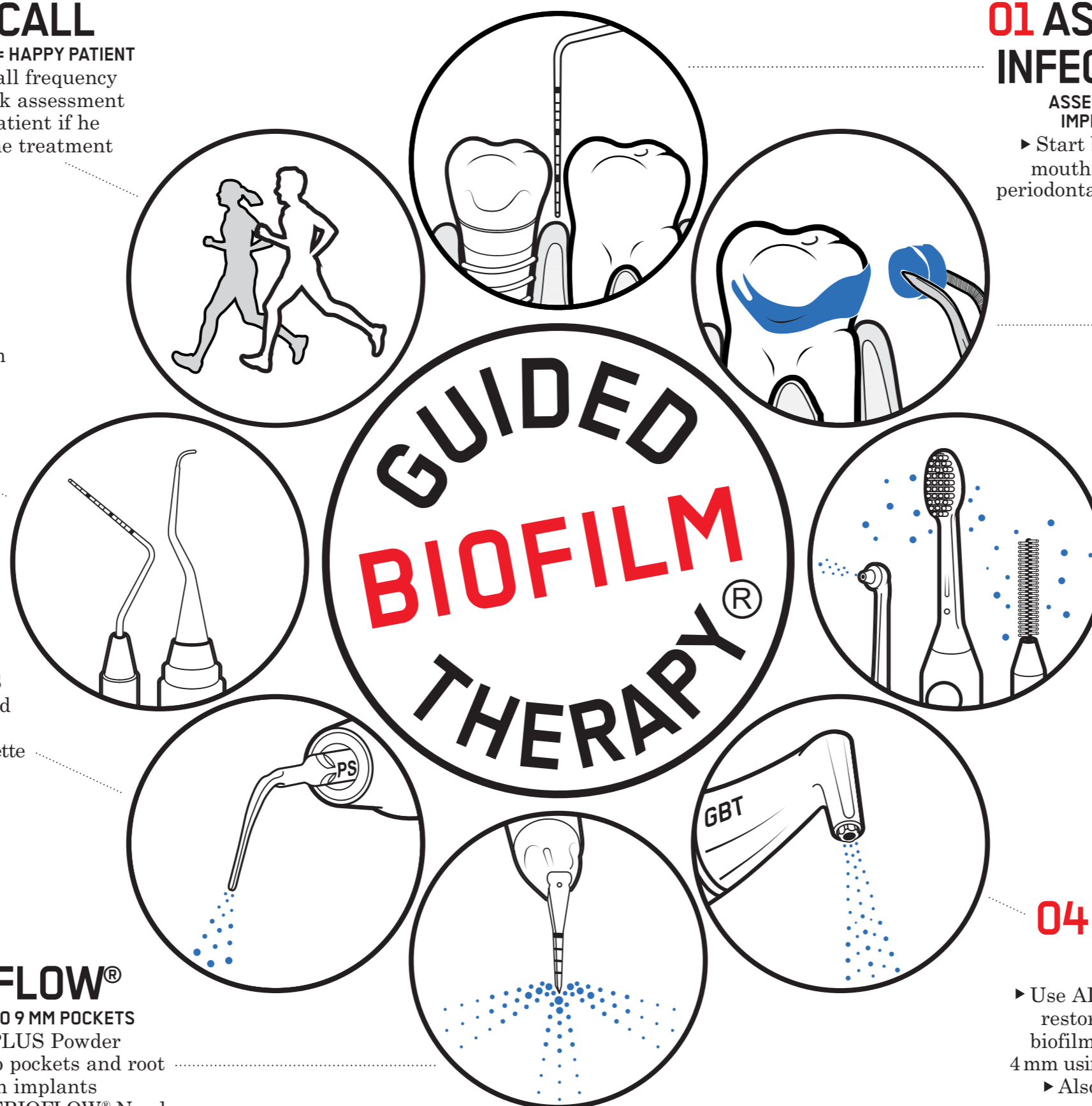
RAISE AWARENESS AND TEACH

- Emphasize the importance of prevention
- Instruct your patients in oral hygiene
- EMS recommends interdental brushes or dental floss as well as electric or manual brushes for daily home care

## 04 AIRFLOW® MAX

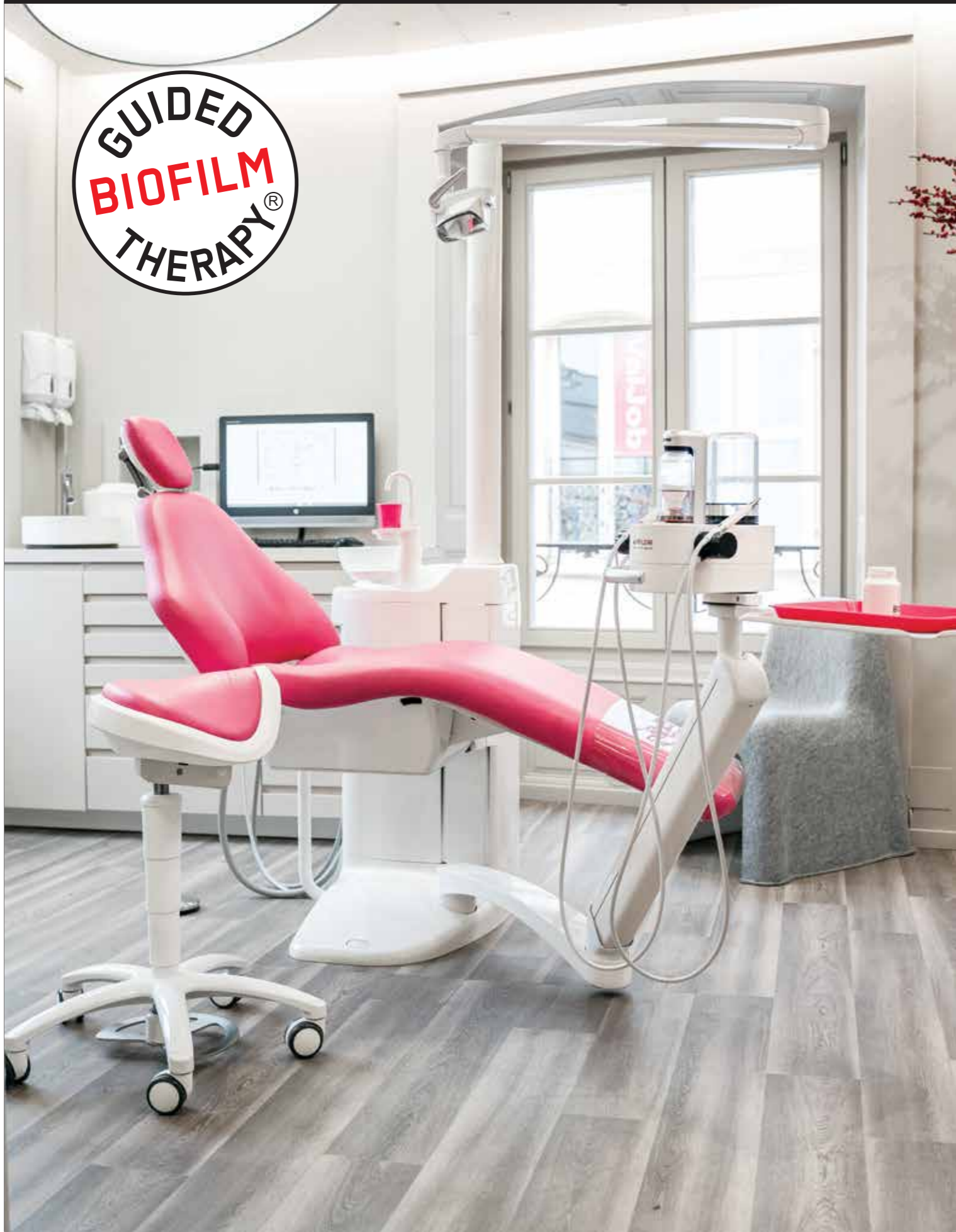
REMOVE BIOFILM, STAINS AND EARLY CALCULUS

- Use AIRFLOW® MAX for natural teeth, restorations and implants
- Remove biofilm supra- and subgingivally up to 4 mm using AIRFLOW® PLUS 14µm Powder
- Also remove biofilm from gingiva, tongue and palate



# THE GBT LOUNGE\*

# ALL IN ONE



## AIRFLOW® PROPHYLAXIS MASTER



- Offer the best, pain-free prophylaxis treatment with the latest technologies such as AIRFLOW® MAX, PERIOFLOW® and PIEZON® PS/PI MAX
- Fully integrated into the chair

## FLOATING CHAIR



- Ultra relax upholstery for ultimate patient comfort
- Maximized legroom
- Ergonomic flexibility
- Built-in tray with 360° rotation

## STOOL



- Ergonomically improved posture
- Saddle seat
- Adjustable sitting angle

## WIRELESS PEDAL



- No cables on the floor
- Wireless connection to your Airflow® Prophyaxis Master

## LED LIGHT



- Intensity up to 50'000Lux
- Touchless sensor for improved hygiene

## FURNITURE\*



- Washing unit
- Touchless dispensers for consumables
- Stores consumables for up to 14 days

\*Additional components available depending on your country/region. Contact your GBT expert for more information.

## GET IN TOUCH AND TAKE YOUR PRACTICE TO THE NEXT LEVEL

Leave your contact details so a GBT expert can get in touch with you and plan a tailor-made GBT Lounge for your dental practice. **Scan the QR Code.**



\*If available in your country

# AIRFLOW® PROPHYLAXIS MASTER

► The new unit from EMS is a game changer that allows to perform Guided Biofilm Therapy under optimum conditions.



REF FT-229 STANDARD CONFIGURATION

REF FT-229-4B-T04 GBT READY CONFIGURATION

1. GOOD DESIGN®, one of the most important Design Prizes in the world from the Chicago Athenaeum Museum of Architecture and Design

# INCLUDES



**AIRFLOW® MAX APPLICATION**  
AIRFLOW® MAX Handpiece  
Easy Clean  
Water and air filters  
Maintenance set



**PERIOFLOW® APPLICATION**  
PERIOFLOW® Handpiece  
20 PERIOFLOW® Nozzles



**PIEZON® APPLICATION**  
PIEZON® LED Handpiece  
3 x PIEZON® PS Instruments  
4 spare Light Guides



PIEZON PI MAX Instrument<sup>1</sup>



Wireless boost pedal<sup>1</sup>



PIEZON® bottle



PLUS and CLASSIC Powder chambers



3 PLUS Powder  
1 COMFORT Powder  
Enough powder to treat around 155 patients



NIGHT CLEANER bottle<sup>2</sup>  
+ 800 ml refill<sup>1</sup>  
2 Clip+Clean



Biofilm Discloser<sup>1</sup>



GBT Training Kit<sup>1</sup>  
with PIEZON® Instrument Check Tool



4 GBT FLOWCONTROL<sup>1</sup>



GBT VISIGATE<sup>1</sup>

**GBT READY CONFIGURATION\***  
Australia / NZ: FT-229-4B-T04



\* If GBT configurations ordered

<sup>1</sup> If available in your country  
<sup>2</sup> Could be CLEANER bottle in some countries

See Accessories p.38

# AIRFLOW® PROPHYLAXIS MASTER

## AIRFLOW® STATION+

► The ultracompact all-in-one prophylaxis station with a futuristic design. An independent water supply system is integrated directly into the cart for enhanced ergonomics with no need for an external water supply connection.

### Includes:

- Cart
- 800 ml water bottle
- Air filter cartridge
- Cable sleeve
- Installation kit

Recommended for:



AIRFLOW®  
Prophylaxis Master

REF DW-048A



# AIRFLOW® ONE



► For dental cabinets already equipped with independent PIEZON® units on their chair or tabletops.



REF FT-230 STANDARD CONFIGURATION

REF FT-230-4B-T04 GBT READY CONFIGURATION

# INCLUDES



**AIRFLOW® MAX APPLICATION**  
AIRFLOW® MAX Handpiece  
Easy Clean  
Water and air filters  
Maintenance set



**PERIOFLOW® APPLICATION**  
PERIOFLOW® Handpiece  
20 PERIOFLOW® Nozzles



PLUS and CLASSIC  
Powder chambers



Wireless boost pedal<sup>1</sup>



PIEZON® bottle



Biofilm  
Discloser<sup>1</sup>



NIGHT CLEANER bottle<sup>2</sup>  
+ 800 ml refill<sup>1</sup>  
2 Clip+Clean



GBT Training Kit<sup>1</sup>  
with PIEZON®  
Instrument Check Tool



3 PLUS Powder  
1 COMFORT Powder  
Enough powder to treat  
around 155 patients



4 GBT FLOWCONTROL®<sup>1</sup>



GBT VISIGATE®<sup>1</sup>

**GBT READY CONFIGURATION\***  
Australia / NZ: FT-230-4B-T04



\* If GBT configurations ordered

<sup>1</sup> If available in your country

<sup>2</sup> Could be CLEANER bottle in some countries

See Accessories p.38

# AIRFLOW® ONE STATION



## AIRFLOW® PREVENTIVE CARE STATION

► The all-in-one ultracompact prophylaxis station with a futuristic design.

### Includes:

- Cart
- Cable sleeve
- Installation kit

Recommended for:



and for AIRFLOW®  
One.

**REF DW-048B**



# AIRFLOW® PLUS POWDER

► AIRFLOW® PLUS Powder is a High-Tech powder which removes biofilm and early calculus in a minimally-invasive way from all types of surfaces:

- Enamel
- Dentine
- Soft tissue
- Tongue and palate
- Primary teeth
- Orthodontic appliances
- Implant surfaces
- Restorations

No salty taste.  
Your patients will love it.



reddot winner 2021



Innovation  
1<sup>st</sup> Prize 2013  
IDS International Dental Show,  
2013, Cologne / Germany

► The Erythritol based PLUS Powder can be applied supra- and subgingivally. The particle size of PLUS Powder is only 14µm.

1 x 400 g

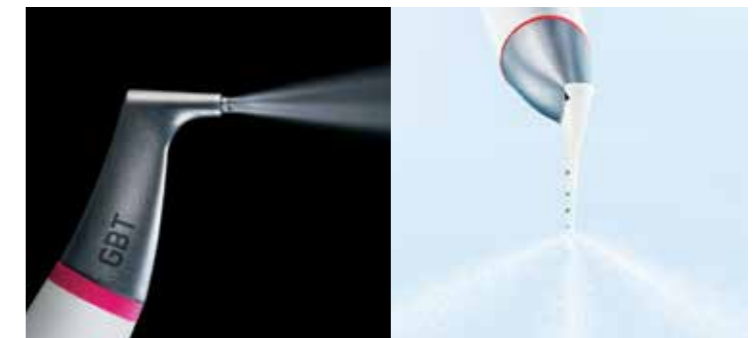
REF DV-082/Z

4 x 400 g

REF DV-082/X

# ONE POWDER ONLY

FOR 95% OF ALL CASES



AIRFLOW® MAX

PERIOFLOW® Nozzle

OPTIMAL COMFORT  
MINIMALLY INVASIVE  
MAXIMALLY PREVENTIVE

## TEETH

► Primary and secondary teeth

## DENTAL HARD TISSUES

- Enamel
- Dentine
- Cementum

## ORAL SOFT TISSUES

- Gingiva: supra- and subgingival pockets up to 9mm
- Tongue
- Palate

## RESTORATIONS AND PROSTHETICS

- Restorations
- Prosthetics
- Dentures

## IMPLANTS

- Peri-implant sulcus
- Deep peri-implant pockets

## ORTHODONTICS

- Orthodontic brackets
- Aligners

## PREPARES FOR:

- Caries diagnosis
- Fluoride treatment
- Orthodontic treatment
- Restorative and prosthetic treatment
- Bleaching procedures



reddot winner 2021



► The original AIRFLOW® PLUS powder is now available in a high-quality aluminum bottle (400 grams) for greater sustainability. After usage of the AIRFLOW® PLUS powder it reverts to a drinking bottle.

# ONLY USE EMS POWDERS!

- ▶ EMS powders are much less abrasive than traditional mechanical debridement techniques such as rubber cups and handscaling.
- ▶ As part of the GBT disclosing phase, coloration also minimizes AIRFLOW® MAX abrasion. No more color signifies that all biofilm has been removed: the objective of AIRFLOW® MAX is achieved, to preserve the integrity of dental tissues.
- ⚠ EMS devices have been designed and tested for exclusive use with EMS prophylaxis powders.

## ! ONLY USE EMS POWDERS



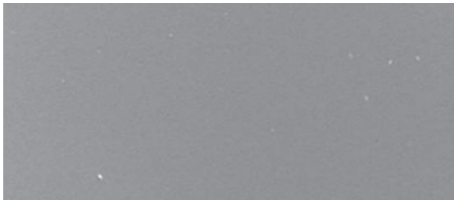
Study from  
Barnes et al.



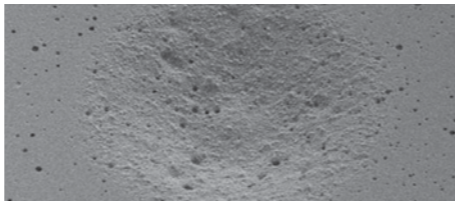
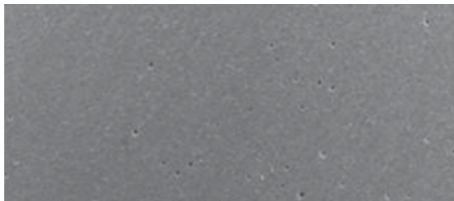
OSSPRAY  
CALCIUM SODIUM  
PHOSPHOSILICATE<sup>1</sup>

EMS AIRFLOW® PLUS  
POWDER ERYTHRITOL<sup>2</sup>

EMS SODIUM  
BICARBONATE<sup>3</sup>



EFFECT OF 5 SEC AIR POLISHING ON HUMAN ENAMEL




EFFECT OF 5 SEC AIR POLISHING ON GLASS IONOMER

1. Barnes CM, et al. J Clin Dent 2014;25:76-87. | 2. For AIRFLOW® PLUS Powder complimentary tests have been submitted to the J Clin Dent (Barnes CM, et al.). | 3. Barnes CM, et al. J Clin Dent 2014;25:76-87. In the study by Barnes, J Clin Dent 2014, the EMS sodium bicarbonate had a particle size of 65 µm. New Powder AIRFLOW® CLASSIC Comfort has 40 µm particle size, for more smoothness and patient comfort.


# ONLY USE THE ORIGINAL!



Name		PLUS	COMFORT
Flavor		N/A	LEMON / MINT CHERRY / NEUTRAL
Composition		ERYTHRITOL	SODIUM BICARBONATE
Particle size		~14µm	~40µm
pH		~7	~8.1
Teeth	Primary teeth	✓	✗
	Secondary teeth	✓	✓ Only supra-
	Biofilm	✓	✓ Only supra-
	Stains	✓	✓ Only supra-
	Early calculus	✓	✓ Only supra-
	Healthy enamel	✓	✓ Only supra-
	Dentine	✓	✗
Soft tissues	Cementum	✓	✗
	Gingiva	✓	✗
	Tongue and palate	✓	✗
Restorations	Restorative materials	✓	✗
	Prosthetics	✓	✗
	Dentures	✓	✗
Implants	Around peri-implant tissues	✓	✗
Orthodontics	Appliances including aligners	✓	✗



SO-CALLED "EMS COMPATIBLE" POWDERS IN THE MARKETPLACE MAY CAUSE DAMAGE TO ORAL TISSUES AND THE DEVICE. SEE BELOW A DAMAGED AIRFLOW NOZZLE AFTER USE WITH A "COMPATIBLE" POWDER. IF EMS PRODUCTS ARE DAMAGED BY USING "COMPATIBLE" POWDERS THE PRODUCT WARRANTY WILL BE LOST.



Damaged handpiece

# WHY MAKE BIOFILM VISIBLE?

- ▶ With GBT we intend to eliminate all the biofilm, including areas which are difficult to access.
- ▶ If biofilm is made visible, it is removed much faster with GBT.
- ▶ What you see is what you remove.  
Color removal = Biofilm removal. Also on soft tissues.
- ▶ The users of hand instruments, rubber cups and “polishing” paste need much more time to finish the treatment.
- ▶ The German Stiftung Warentest reported that the conventional prophylaxis only removes 50% of Biofilm in the difficult to access areas.\*
- ▶ Colored teeth and gums will also help motivate the patient to improve their homecare – Oral Hygiene Instructions (OHI)



This 14 year old patient has a significant lack of oral hygiene. Disclosing agent reveals massive acidogenic biofilm.

Courtesy, Dr. Gleb Aseev

# EMS **BIOFILM** DISCLOSER



- ▶ A new discloser for Biofilm was developed by EMS.
- ▶ The EMS Biofilm Discloser visibly reveals the presence of early and mature biofilm.

## ▶ 250 **DISCLOSING PELLETS**



- ▶ Pre-soaked pellets for 2 tone biofilm disclosure.  
Reddish for new biofilm - Blue for mature biofilm

## **MAKE BIOFILM VISIBLE**

Highlight to patients the disclosed biofilm and their problematic areas. The color will guide the biofilm removal with AIRFLOW® PLUS Powder. Once biofilm is removed, calculus is easier to detect.

1 box with 250 pellets

REF **DV-158<sup>1</sup>**

# GBT HANDPIECES



- ▶ ONLY THE **VERY** BEST FOR MY PATIENTS
- ▶ ONLY THE **SWISS** ORIGINALS

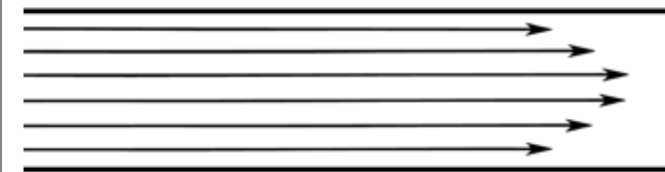
# NEW AIR-FLOWING®



## THE BRILLIANT NEW AIR-FLOWING® FROM THE INVENTOR OF THE ORIGINAL

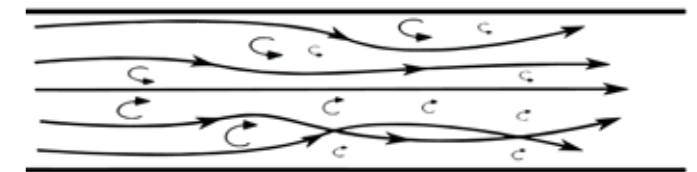
▶ The new AIRFLOW® MAX handpiece with its patented Laminar AIRFLOW® Technology is another brilliant innovation from the EMS Research Center. AIR-FLOWING® is now even more gentle, more comfortable, more efficient and aerosols are considerably reduced. There is a big difference between Air-Polishing and AIR-FLOWING®.

### LAMINAR FLOW



AIRFLOW® MAX with the new Laminar Flow for perfect control.

### TURBULENT FLOW



The traditional AIRFLOW® behavior.



Precise and focused air and AIRFLOW® PLUS Powder jet, shielded by water spray.



Six hexagonal water channels for more precision and high aerosol reduction.

- ▶ **BETTER VISIBILITY**
- ▶ **A LOT LESS NOISE**
- ▶ **HIGH PRECISION WORK**
- ▶ **LESS RECOIL FORCE**
- ▶ **HIGH REDUCTION OF AEROSOL SPLATTER**
- ▶ **HIGH PATIENT COMFORT**
- ▶ **HIGH USER COMFORT**
- ▶ **MUCH SLIMMER AND LIGHTER HANDPIECE**



# AIRFLOW® MAX

# HANDPIECE



## AIRFLOW® MAX INTRODUCTION KIT SMART

- ▶ AIRFLOW® MAX Handpiece
- ▶ Easy Clean
- ▶ AIRFLOW® PLUS Powder 400g
- ▶ Biofilm Discloser samples

135°C  
SSS > 1000 cycles



REF FS-475



## SO SIMPLE !

Use Easy Clean after each AIRFLOW® and PERIOFLOW® treatment, before sterilizing your handpieces. Prevents and in some cases solves handpiece clogging. Simply use the Easy Clean with water syringe. No need for needles anymore.



EASY CLEAN



REF FV-083

## AIRFLOW® MAX, THE NEW AND BEST AIR-FLOWING® EVER



PLEASE FIND  
THE CLINICAL  
EVIDENCE HERE

## NEW GBT HIGH SPEED SUCTION AGAIN DESIGNED IN SWITZERLAND, TO CONTROL AEROSOL AND SPLATTER.

FOR BEST VISIBILITY AND  
AEROSOL/SPLATTER  
CONTROL, ALWAYS USE  
THE GBT FLOWCONTROL®  
IN COMBINATION WITH  
THE GBT VISIGATE®



- ▶ **BEST VISIBILITY**
- ▶ **AEROSOL /  
SPLATTER CONTROL**

### GBT FLOWCONTROL®<sup>1</sup>

4x suction in one cardboard



REF FV-112/A

### GBT FLOWCONTROL® SPARE PARTS<sup>1</sup>

4x suction skirts



REF FV-118

<sup>1</sup> If available in your country



#### MATERIALS

- ▶ Body: PP (Polypropylene)
- ▶ Skirt: TPE (Thermoplastic Elastomer)



#### CLINICAL APPLICATIONS

- ▶ Best aerosol/splatter control solution during GBT Protocol and general dentistry
- ▶ Soft-tissue friendly



#### COMPATIBILITY

- ▶ GBT Protocol
- ▶ Standard 16 mm high-speed suction systems



#### REPROCESSING RECOMMENDATIONS

- ▶ Separate the body and the skirt for each reprocessing
- ▶ Compatible with sterilisation at 135° C



#### LIFETIME

- ▶ Body: Up to 250 reprocessing cycles
- ▶ Skirt: Up to 250 reprocessing cycles

**Reminder:** Disassemble skirt from the body  
before each reprocessing

WATCH THE  
VIDEO ON  
FLOWCONTROL®



# PERIOFLOW® HANDPIECE

## PERIOFLOW® APPLICATION

- ▶ PERIOFLOW® Handpiece
- ▶ 20 PERIOFLOW® Nozzles
- ▶ Nozzle remover

135°C > 1000 cycles



REF FS-474

## 40 PERIOFLOW® NOZZLES

Deep-pocket biofilm removal with EMS PERIOFLOW®. With depth markings



REF DT-476

## CHECK TOOL

To remove safely PERIOFLOW® Nozzle



REF FV-126

# PIEZON® HANDPIECE

## PIEZON® LED HANDPIECE

- ▶ PIEZON® LED Handpiece
- ▶ PIEZON® PS Instrument
- ▶ 4 spare Light Guides

135°C > 1000 cycles



REF FS-455

## PIEZON® NO LED HANDPIECE

Universal PIEZON® Original handpiece

135°C > 1000 cycles



REF EN-061

## COMBITORQUE

Unique combination of torque wrench and instrument holder.

135°C > 1000 cycles



REF FV-097

## PI MAX INSTRUMENT TOOL

To connect, disconnect and check the PI MAX Instrument tip.

135°C > 1000 cycles



REF FV-117

# PIEZON® NO PAIN PS INSTRUMENT



**ONLY USE THE SWISS ORIGINAL  
EMS INSTRUMENTS!**



- ▶ The slogan "I feel good" was launched when EMS invented the Swiss PIEZON® PS Instrument.
- ▶ The Original Swiss PIEZON® PS Instrument will do 95 % of all scaling. No need for different instruments - this makes work easier. For the remaining 5%, EMS has a new solution: the PIEZON® PSR and PSL Instruments.



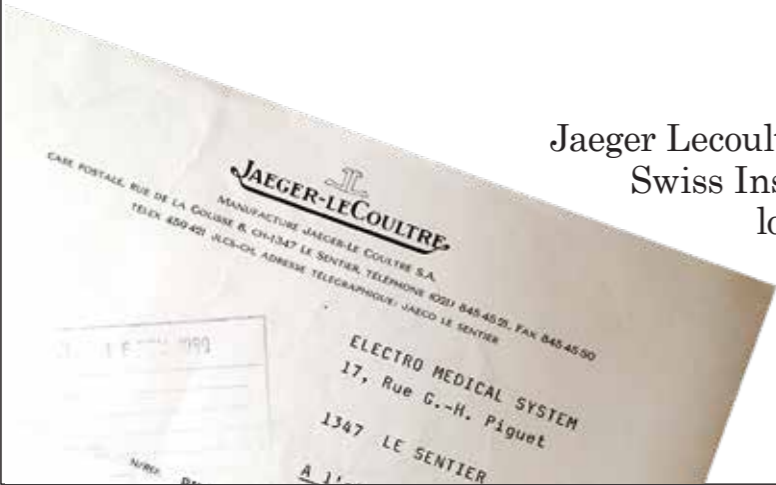
PIEZON® PS  
Instrument



- ▶ The PIEZON® piezo-ceramic technology was invented by Pierre Mabille, co-founder of EMS.

## DID YOU KNOW?

The prestigious Swiss watchmaker Jaeger Lecoultre was the first partner to develop EMS Swiss Instruments when EMS was still a startup long before the Company's EMS Research Center and Manufacture was built in Nyon, Switzerland.



Policy of FDI - World Dental Federation:  
“The policy is intended to help ensure dental products are safe for patient care and conform to manufacturers’ specifications, international standards and government regulations.”

Following the FDI statement on „Non Compliant Dental Products“, please be aware that EMS devices have been designed and tested for the exclusive use with EMS PIEZON® Instruments.

The EMS Instrument, the Handpiece and the NO PAIN Electronic module have to vibrate in harmony like in a Trilogy. Using so-called “compatible” and copy tips from third parties can damage your patients teeth and EMS Handpieces. They were developed and made by EMS for each other. One PS Instrument is designed for up to 1000 treatments. The cost of one use of a PS instrument is only 5 cents. There is absolutely no reason to "save" money here and to use "compatible" tips . If the Piezon Handpiece will be damaged (the thread) it will lose its Warranty. At the end of the day “compatible” tips will always cost you more



# PIEZON® INSTRUMENTS



## PS INSTRUMENT

For 95% of all cases.  
Universal PIEZON instrument  
for sub- and supragingival  
calculus removal. Best  
interproximal access.



REF DS-016A  
REF DS-016A/T (X3)

## PI MAX INSTRUMENT<sup>1</sup>

The new instrument for  
calculus removal around  
implants and restorations.  
PEEK with 30% carbon  
fiber and medical grade  
stainless steel.



REF DS-010A

## PI MAX TIPS<sup>1</sup>

Interchangeable PEEK  
with 30% carbon fiber tip  
for the new PIEZON®  
PI MAX Instrument.



REF DT-065A (X4)

## PI MAX INSTRUMENT INTRODUCTION KIT<sup>1</sup>

The PI MAX and its  
accessories in one package.



REF FS-295#

## PSL INSTRUMENT

Best approximal,  
mesial and distal access,  
supra- and subgingival.



REF DS-083A  
REF DS-083A/T (X3)

## PSR INSTRUMENT

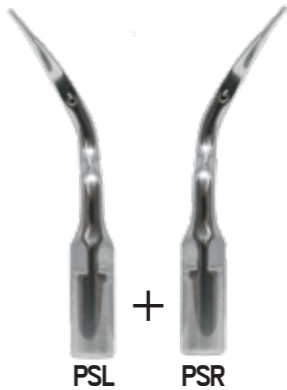
Best approximal,  
mesial and distal access,  
supra- and subgingival.



REF DS-084A  
REF DS-084A/T (X3)

## PSR + PSL INSTRUMENTS

Best approximal,  
mesial and distal access,  
supra- and subgingival.



REF FS-461

## PIEZON® INSTRUMENT CHECK TOOL

To check instrument  
length and tip.



REF FV-126

Use with :



<sup>1</sup> If available in your country

# HYGIENE SOLUTIONS

## NIGHT CLEANER<sup>1</sup>



► NIGHT CLEANER delivers easy-to-use long-term cleaning and disinfection. Keep the waterline of your unit “biofilm free”.

- PROCEDURE IS 100% AUTOMATIC
- LESS THAN 10 SECONDS IN THE EVENING
- THE COST IS LESS THAN 50 CENTS PER DAY
- CLEANS BOTH AIRFLOW® AND PIEZON® LINES



**6 X 800 ML NIGHT CLEANER**  
6 month's use.

**REF DV-154-A**

<sup>1</sup> If available in your country

# EMS GBT VISIGATE®

## GBT VISIGATE®

► A complementary GBT tool, to improve visibility and comfort during the GBT treatment.



### APPLICATIONS

- GBT treatments
- General dentistry



### MAIN FEATURES

- Lip and cheek retractor
- Enhanced visibility
- Easier access
- Improved workflow
- Ease of use
- Comfortable for the patient
- Clinically proven since 2004
- Available in 2 sizes (small and regular)



### MATERIALS

- Styrene-ethylene/butylene-styrene (SEBS) and polypropylene
- Latex-free, flexible material



### LIFETIME

- Single use



1 box with 60 small GBT VISIGATE®

1 box with 60 regular GBT VISIGATE®

1 box with 30 small and 30 regular GBT VISIGATE®

**REF FV-123/S<sup>1</sup>**

**REF FV-123/R<sup>1</sup>**

**REF FV-123/SR<sup>1</sup>**

<sup>1</sup> If available in your country

# ACCESSORIES



**FOOT PEDAL**  
Boost and wireless pedal  
EK-404B



**CORD**  
AIRFLOW® cord  
PIEZON® cord (AFPM)  
EM-145A  
EM-146A



**POWDER CHAMBER**  
PLUS powder chamber - red  
CLASSIC powder chamber - white  
EL-607A  
EL-606A



**BOTTLES**  
PIEZON® bottle - ml graduation (AFPM)  
Water bottle - no graduation (AFOne)  
NIGHT CLEANER bottle - blue  
EG-111A  
EG-121A  
EG-120A



**HYGIENE**  
3x water filters - blue  
Air filter - white  
Easy Clean  
Clip+Clean  
FV-094  
EL-599  
FV-083  
EL-655

THE SWISS DENTAL **ACADEMY**

THE SWISS DENTAL ACADEMY OFFERS

- ▶ GBT courses in your area.
- ▶ Individual one day GBT training.
- ▶ Live and on-demand webinars.



[professional.airflowdentalspa.com.au/swiss-dental-academy/upcoming-courses](https://professional.airflowdentalspa.com.au/swiss-dental-academy/upcoming-courses)



# JOIN THE **GBT** MOVEMENT!



**"I FEEL GOOD"**

**CALL YOUR  
GBT EXPERT  
FROM EMS**



„The GBT Certification to me is a community. It's a community where providers can share knowledge, where they are being continuously trained and making sure that we always follow the standardized protocol for the benefit of our patients. I am absolutely thrilled to be the first group of GBT-certified practices.“

- PATRICK SAASEN, CEO OF ADENT DENTAL CLINICS, FIRST GBT-CERTIFIED DENTAL CLINIC

# GET **GBT** CERTIFIED!

## CERTIFY YOUR PRACTICE

As a GBT Certified practice, become a part of an exclusive network of passionate dental professionals offering dental prophylaxis at the highest possible standards. Backed by the evidence-based GBT protocol, GBT Certified practices benefit from a wealth of exclusive services.



**CERTIFIED PRACTICE**



### HIGHER VISIBILITY AND REVENUE

- Your practice will be listed on the GBT Patient Finder ([www.gbt-finder.com](http://www.gbt-finder.com))\*, an online directory to help patients locate you as their closest GBT Certified practice.



### MARKETING TOOLS TO HELP PROMOTE YOUR PRACTICE

- Welcome kit to help incorporate a recognisable GBT appearance
- GBT branded material
- Social media templates and 3D patient-friendly video



### EXCLUSIVE EDUCATION PROGRAM

- Training based on the latest scientific and clinical research
- Regular e-learning modules and webinars
- Follow-up training & training for new team members



### A ONE-YEAR WARRANTY EXTENSION

- Receive a second year of warranty on your new AIRFLOW® Prophylaxis Master and AIRFLOW® ONE\*

\*This warranty is only valid if you have completed your first annual maintenance within 12 months following purchase.



### PREMIUM CUSTOMER SERVICE

- Ask your GBT expert which benefits apply in your country



**JOIN THE GBT  
MOVEMENT**

\*in the authorized countries

# THE GBT TOOLS



AIRFLOW® Prophylaxis Master      PIEZON® Instruments      GBT FLOWCONTROL®



AIRFLOW® MAX handpiece      PIEZON® LED handpiece



PERIOFLOW® handpiece      GBT VISIGATE®



# EMS WORLDWIDE



**HEADQUARTERS**  
**NYON, SWITZERLAND**  
**E.M.S. ELECTRO MEDICAL SYSTEMS S.A.**  
 Chemin de la Vuarpillière 31  
 CH - 1260 Nyon  
[www.ems-dental.com/en/contact](http://www.ems-dental.com/en/contact)  
[www.ems-dental.com](http://www.ems-dental.com)  
 T. +41 22 994 47 00  
 F. +41 22 994 47 01

## WORLDWIDE EMS AFFILIATES

**MUNICH, GERMANY**  
**EMS ELECTRO MEDICAL SYSTEMS GMBH**  
 Stahlgruberring 12  
 DE - 81829 München  
 T. +49 89 42 71 61 0  
 F. +49 89 42 71 61 60  
 E-mail: [info@ems-ch.de](mailto:info@ems-ch.de)

**FONCINE, FRANCE**  
**EMS ELECTRO MEDICAL SYSTEMS FRANCE SARL**  
 32, route de Pontarlier  
 FR - 39460 Foncine-le-Haut  
 T. +33 3 84 51 90 01  
 F. +33 3 84 51 94 00  
 E-mail: [info@ems-france.fr](mailto:info@ems-france.fr)

**MADRID, SPAIN**  
**EMS ELECTRO MEDICAL SYSTEMS ESPAÑA SLU**  
 C/ Tomás Bretón, 50-52 2ª planta  
 ES - 28045 Madrid  
 T. +34 91 528 99 89  
 E-mail: [info@ems-espana.com](mailto:info@ems-espana.com)

**LISBON, PORTUGAL**  
**EMSPOR - ELECTRO MEDICAL SYSTEMS PORTUGAL, UNIPESSOAL LDA**  
 Avenida Miguel Bombarda, 36, 6A  
 PT - 1050-165 Lisboa  
 T. +351 912 338 777  
 E-mail: [info@ems-portugal.com](mailto:info@ems-portugal.com)

**MILANO, ITALY**  
**EMS ITALIA S.R.L.**  
 Via Carlo Pisacane 7B  
 IT - 20016 Pero (MI)  
 T. +39 02 3453 8111  
 E-mail: [dental@ems-italia.it](mailto:dental@ems-italia.it)

**CAMBRIDGESHIRE, UNITED KINGDOM**  
**EMS UK LTD**  
 Suite 2 - Xenus House - Sandpiper Court  
 Phoenix Park - Eaton Socon  
 UK - St Neots, Cambridgeshire  
 PE19 8EP  
 T. +44 01480 587260  
 Email: [info@ems-unitedkingdom.com](mailto:info@ems-unitedkingdom.com)

**STOCKHOLM, SWEDEN**  
**EMS NORDIC AB**  
 Hammarby Fabriksväg 61  
 SE - 120 30 Stockholm  
 T. +46 8 899 102  
 E-mail: [info@ems-nordic.se](mailto:info@ems-nordic.se)

**TYCHY, POLAND**  
**EMS POLAND SP. Z O.O.**  
 Fabryczna 43  
 PL - 43-100 Tychy  
 T. +48 32 4937060  
 E-mail: [info@ems-poland.com](mailto:info@ems-poland.com)

**THESSALONIKI, GREECE**  
**EMS EAST MEDITERRANEAN**  
 10 km. Thessaloniki - Themi,  
 GR - Thessaloniki 57001  
 T. +30 231 231 61 30

**AMMAN, JORDAN**  
**EMS ELECTRO MEDICAL SYSTEMS JORDAN**  
 No.2 - second floor, 195 Arar (Wadi Saqra) str.  
 JO - Amman

**DALLAS, USA**  
**EMS CORPORATION**  
 11886 Greenville Avenue, Ste 120  
 US - Dallas, Texas 75243  
 T. +001 800-367-0367  
 E-mail: [info@ems-na.com](mailto:info@ems-na.com)  
 Aftersales: [emsrepairs@ems-na.com](mailto:emsrepairs@ems-na.com)

**SYDNEY, AUSTRALIA**  
**EMS OCEANIA PTY LTD**  
 The Woolstores - Suite 3, Shed 73  
 4E Huntley Street  
 AU - Alexandria, NSW 2015  
 T. +61 405 095 867  
 E-mail: [info@ems-oceania.com](mailto:info@ems-oceania.com)

**TOKYO, JAPAN**  
**E.M.S. JAPAN BRANCH OFFICE**  
 2F Takebashi Yasuda Building,  
 3-13 Kanda Nishiki-cho  
 JP - Chiyoda-ku, Tokyo, 101-0054  
 T. +81 (0) 3-6810-9351  
 F. +81 (0) 3-6810-9352  
 E-mail: [emsjapan@ems-ch.com](mailto:emsjapan@ems-ch.com)

**SHANGHAI, CHINA**  
**医迈斯电子医疗系统贸易(上海)有限公司**  
**E.M.S. ELECTRO MEDICAL SYSTEMS TRADING (SHANGHAI) CO., LTD.**  
 24A, Jin Sui Mansion,  
 N°379 Pudong Nan Rd.  
 CN - Shanghai 200120  
 T. +86 21 3363 2323  
 E-mail: [emschina@ems-ch.com](mailto:emschina@ems-ch.com)

**SEOUL, SOUTH KOREA**  
**EMS ELECTRO MEDICAL SYSTEMS KOREA LTD.**  
 13, Beobwon-ro 8-gil, Songpa-gu  
 T. +82 70 7807 2875  
 E-mail: [emskorea@ems-ch.com](mailto:emskorea@ems-ch.com)



## BOOK A FREE GBT TEST DRIVE



SCAN THE CODE TO  
BOOK IN YOUR TEST  
DRIVE TODAY

## 24/7 EMS SUPPORT



SCAN THE CODE  
TO ACCESS 24/7  
TROUBLESHOOTING ON  
OUR WEBSITE

## NEED SPARE PARTS?



SCAN THE CODE TO  
ACCESS OUR SPARE PART  
CATALOGUE

EMS Oceania Pty Ltd  
Suite 3, Shed 73  
4E Huntley Street  
Alexandria 2015 NSW  
Australia  
Ph: 13004MYEMS  
AIRFLOWDENTALSPA.COM.AU

**EMS**   
MAKE ME SMILE.