



CS 9600 CBCT WITH SCAN CEPH MODULE

Smarter and Better Than Ever

CS 9600 CBCT SCANNER.
Extraoral imaging has never been so intelligent.

The world's most intelligent CBCT system is smarter and more versatile than ever. A new Scan Ceph module—as well as other innovations—deliver the best possible results with ease. The CS 9600 redefines quality and usability, making it the perfect imaging system for dental professionals and orthodontists who want a new level of precision.

CBCT Imaging: Produce crisp, highly precise 3D images of teeth, soft tissue, nerve canal and bone in the cranial region with a single scan.

2D Panoramic Imaging: Generate crystal-clear 2D images, including panoramic, TMJ, extraoral bitewing and FMS, with the latest Tomosharp technology.

Scan Ceph module¹: Obtain best-in-class cephalometric images using state-of-the-art scanning ceph technology, image processing and automatic tracing¹.

3D Model Scanning: Obtain high-precision digital 3D models by simply scanning patient impressions, radiographic guide or plaster models.

Multiple Fields of View: Cover every diagnostic need—from routine to specialized with up to 14 fields of view.

Low-Dose 2D and 3D Scans: Reduce dose and adhere to the “as low as reasonably achievable” (ALARA) principle.

Stellar Technology: Reduce beam hardening artifacts and improve contrast without increasing dose, thanks to the 120 kV X-ray tube and intelligent filtration.

Remote Monitoring¹: Maximize system efficiency with our advanced CS Upstream technology that continuously monitors the CS 9600, tracking in real time the historical behavior of the unit.



Intelligence Driven. Precision Delivered.

NEW

AI-POWERED POSITIONING

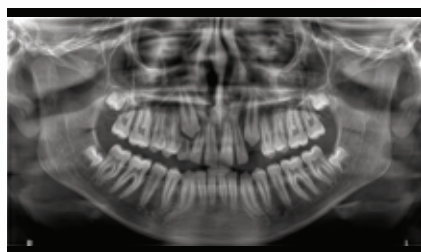
Using Artificial Intelligence, the unit automatically detects the Frankfort plane to reduce risk of mistake and obtain consistent results even more easily.



NEW

CRYSTAL-CLEAR PANORAMIC IMAGES

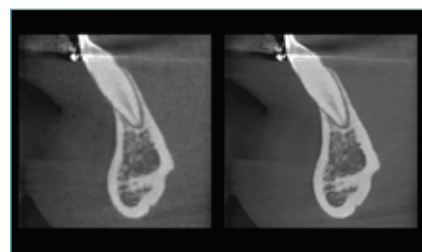
Our new Tomosharp technology—combined with AI-based positioning and state-of-the-art processing—deliver crystal-clear panoramic images nearly automatically.



NEW

ADVANCED NOISE REDUCTION

This new algorithm reduces image noise while preserving clinical details.



NEW

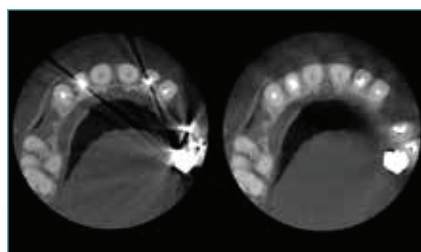
SCAN CEPH MODULE¹

The CS 9600 captures precise cephalometric images and analyzes them quickly using automatic tracing module¹.



EXCLUSIVE CS MAR TECHNOLOGY

Automatically reduces metal artifacts for better image quality, including exclusive live comparison feature.



INTUITIVE SMARTPAD

Humanized user interface guides the operator through every step of an exam, simplifying procedures and reducing the likelihood of errors from setup to image quality control.



CS FACE SCAN¹

Provide realistic 3D facial images and automatically superimpose surface scans on CBCT images and 3D models.



¹Option

Australia

Tel: 03 9795 9599 | Freephone: 1300 IVOCLAR (486 252)

Email: orders.au@ivoclarvivadent.com | Website: www.ivde.com.au

ivoclar
vivadent®
passion vision innovation