

## 1 BASIN GAS PASTA COOKER 40 LT

### QUEEN9

- AISI 304 stainless-steel bases and worktops, Scotch-Brite finish
- Depth of 900 mm for high power and performance
- Catalogue offers more than 350 standard models
- Worktop, base cabinet, base cabinet with doors and oven versions
- 20/10 worktop thickness
- Twin-piece knobs prevent infiltration of dirt and have an IPX5 water ingress protection rating
- Gas kitchens having burners with various configurations and power ratings: 3.5 kW - 5.7 kW, 7 kW and 10 kW
- Double-ring burners for 7 and 10 kW models
- Wide range of accessories



### Technical / functional characteristics

- Large capacity (42 litres) alloy AISI 316 stainless steel cooking tank with excellent corrosion resistance even at high temperatures. They are moulded with internal rounded corners for maximum hygiene and cleaning, and are equipped with wide foam expansion areas and a drain device for residue starch;
- Safety thermostat in tub to avoid dry functioning;
- Stable flame burners with pilot burner piezoelectric ignition;
- Safety valve with thermocouple and progressive adjustment of the supplied power independent for each tub.

DIMENSIONS	
Width (mm)	400
Depth (mm)	900
Height (mm)	900
Gas connection (∅)	3/4"
Electric connection (V/~ /Hz)	
Cold water connection (∅)	3/4"
Hot water connection (∅)	

Cold soft water connection (∅)	
Drain (∅)	1"
Gas power (Mj/hr)	60
Electric power (kW)	
Plate dimensions (mm)	
Tank capacity (L)	40
Tank dimensions (mm)	
Internal oven dimensions (mm)	

MODEL

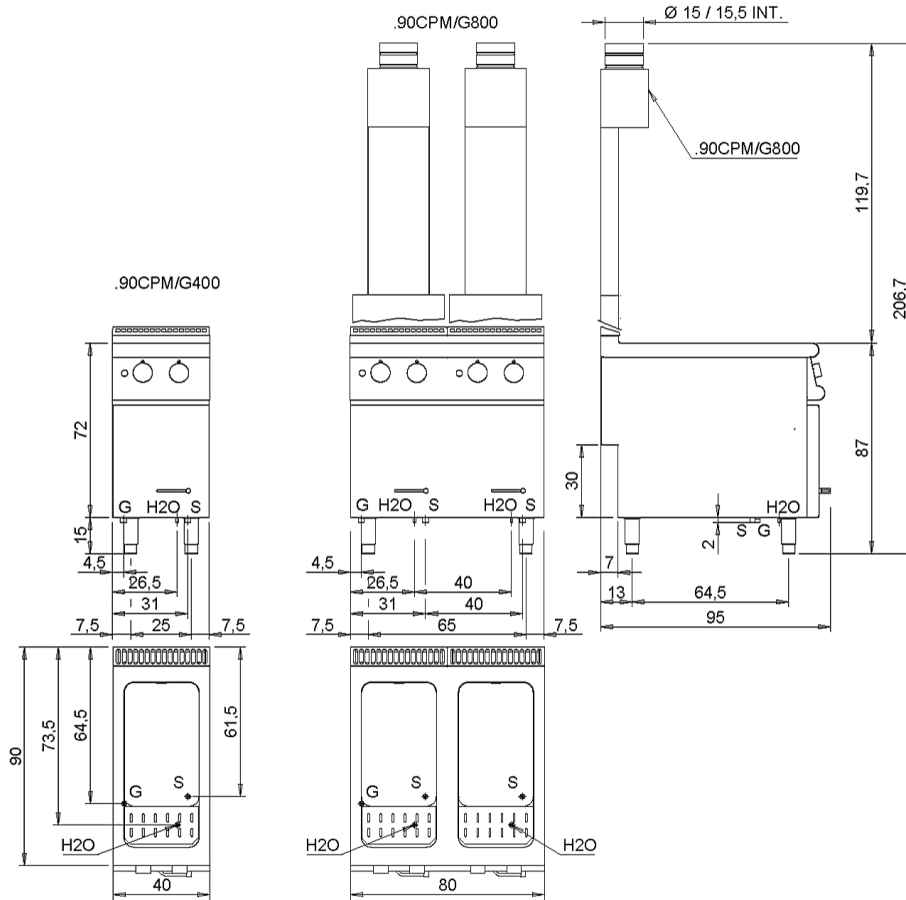
Q90CP/G400

CODE

CR1018269

**SCHEMA DI INSTALLAZIONE - INSTALLATION DIAGRAM - INSTALLATIONSPLAN - SCHÉMA D'INSTALLATION - ESQUEMA DE INSTALACION -INSTALLATIESCHEMA - IINSTALLATIONSRTNINGAR**

MISURE IN cm - DIMENSIONS IN cm - ABMESSUNGEN IN cm- MESURES EN cm  
MEDIDAS EN cm - MATEN IN cm - DIMENSIONES EN cm



**Legenda - Legende - Key - Légende - Leyenda - Leyenda**

<p><b>E</b> Pressacavo entrata linea elettrica - Stopfbuchse - Electric cable stress relief - Presse étoupe de câble él - Pisacable - Elektrische kabelwartel - Entrada cabo eléctrico</p>	<p><b>G</b> Arrivo gas - Gasanschluss - Gas connection - Arrivée gaz - Union de gas - Gasaansluiting - Ligaçao gás</p>
<p><b>S</b> Attacco scarico acqua - Wasserablauf - Water outlet - Vidange de l'eau - Desaguadero - Wateraftapaansluiting - Junção descarga água <b>EN 10226-1 R1</b></p>	<p><b>H2O</b> Arrivo acqua - Wasseranschluss - Water inlet - Arrivée eau - Union de agua - Wateraansluiting - Junção alimentação água</p>
<p><b>S1</b> Scarico vasca - Wannenabflussrohr - Pan outlet - Vidange du bac - Descarga cuba - Water toevoyer - Descarga da cuba</p>	<p><b>A1</b> Calda - Heiss - Warm - Chaude - Caliente - Warm - Morno <b>A2</b> Fredda - Kalt - Cold - Froid - Fria - Koude - Frio Ø=1 cm</p>
<p><b>S2</b> Valvola di depressione - Anti-depression valve - Unterdruck ventii - Soupape de dépression - Válvula de depresión - Onderdrukklep - Válvula de depressão</p>	<p><b>L</b> Rubinetto di livello - Level tap - Wasserhahn - Robinet de niveau - Grifo de nivel - Niveaakraan - Torneira de nível</p>
<p><b>S3</b> Scarico acqua intercapedine - Wasserablauf Zwischenraum - Jacket water drain Evacuation eau double envelope - Descarga de agua intersticios - Afvoer water tussenruimte - Descarga de água na marmitta com Sistema de aquecimento indirecto</p>	