

Modulift

Spreader Beams • Lifting Beams • Lifting & Spreader Frames



Distributed in Australia by

 **Bullivants**
HANDLING SAFETY

Modulift: Working Between the Hook & the Load

Our Vision

To be renowned globally as specialist engineers operating in a niche market, concentrating on the provision of custom and complex lifting solutions and exceeding our customers expectations by providing an all round service on the delivery of value for money and quality products.

Our Mission

To globally deliver our expertise through innovative design, quality of products and customer satisfaction whilst ensuring a safe lifting environment.

Our Values

- Leadership
- Passion
- Accountability
- Innovation
- Quality
- Integrity

At Modulift, we pride ourselves on being able to offer you a complete lifting engineering service from start to finish. We are here to help you solve your lifting problems, advise on rig planning, design custom lifting equipment, or manufacture quality assured products to the highest specifications.

Modulift are there every step of the way to ensure your lift runs smoothly, on time and to budget.



Off-the-Shelf Range

Modulift offer an extensive Off-the-Shelf range of Spreader Beams, below shows the SWL capacity and spans. Details of Super Heavy Range (up to 5000t) capacity are available on request.

Standard		Heavy		
QJ2 Up to 2t at 1.2m/4ft	MOD 34 Up to 34t at 5m/17ft Up to 8m/26ft at a lower capacity.	MOD 110 Up to 110t at 11m/37ft Up to 16m/52ft at a lower capacity.	MOD 250/300 Up to 300t at 12m/40ft Up to 20m/66ft at a lower capacity.	MOD 400/600 Up to 600t at 12m/40ft Up to 23m/76ft at a lower capacity.
MOD 6 Up to 6t at 2.5m/8ft	MOD 50 Up to 50t at 7.5m/25ft Up to 11m/36'ft at a lower capacity.	MOD 110H Up to 170t at 8m/26ft Up to 16m/52ft at a lower capacity.	MOD 250/400 Up to 400t at 8m/28ft Up to 20m/66ft at a lower capacity.	MOD 600/600 Up to 600t at 21m/70ft Up to 26m/85ft at a lower capacity.
MOD 12 Up to 12t at 4m/13ft	MOD 70 Up to 70t at 9m/29ft Up to 12m/40'ft at a lower capacity.	MOD 110SH Up to 240t at 6m/20ft Up to 16m/52ft at a lower capacity.	MOD 400/400 Up to 400t at 16m/55ft Up to 23m/76ft at a lower capacity.	MOD 600/800 Up to 800t at 18m/60ft Up to 26m/85ft at a lower capacity.
MOD 24 Up to 24t at 4.5m/14ft Up to 6m/20ft at a lower capacity.	MOD 70H Up to 100t at 8m/25ft Up to 12m/40ft at a lower capacity.	MOD 250/250 Up to 250t at 13m/45ft Up to 20m/66ft at a lower capacity.	MOD 400/500 Up to 500t at 14m/47ft Up to 23m/76ft at a lower capacity.	MOD 600/1000 Up to 1000t at 15m/51ft and up to 26m/85ft at a lower capacity.

Modulift Spreader Beams

Modulift offer a wide range of Modular Spreader Beam components, offering a variety of different spans for all your lifting needs.

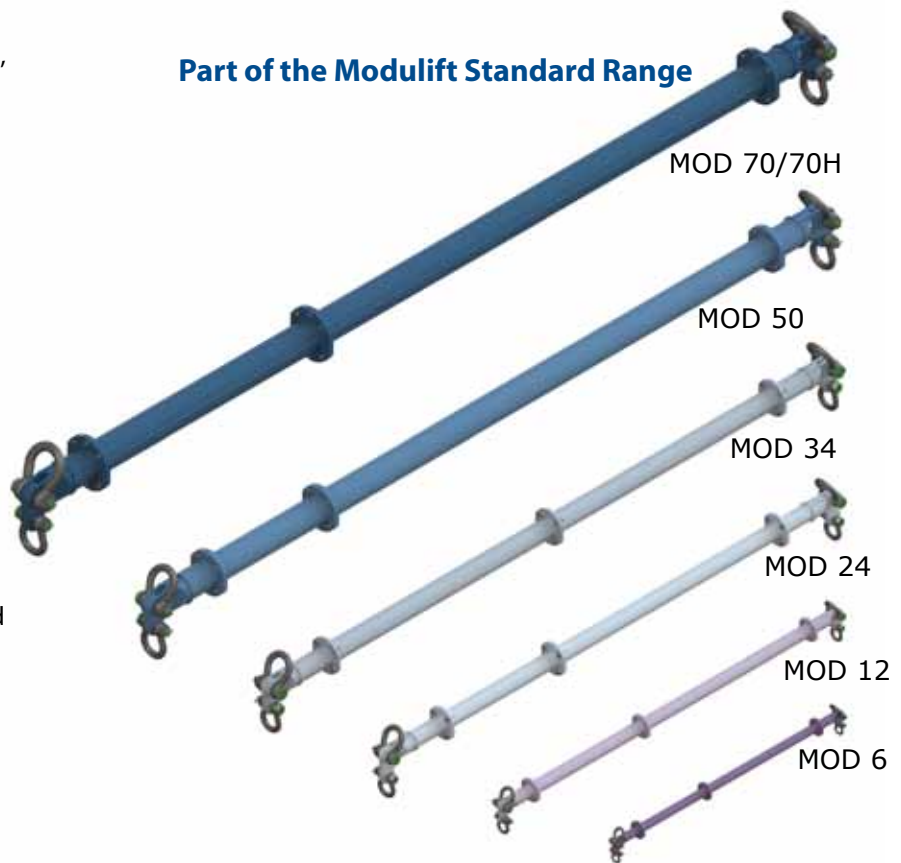
The sizes range from 2 to 5,000t with spans available from 0.4m/1'4" - 100m/300'.

The flexibility of the modular configuration enables our Spreader Beams to be reused time and time again, providing a cost-effective solution.

What Size Beam Do I Need?

Simple! First select the span you require, then select the SWL you need for that span. Please see tables on pages 6 & 7 to select your beam.

Part of the Modulift Standard Range



Range Classification

Range	Modulift Sizes
Standard	6, 12, 24, 34, 50, 70, 70H
Heavy	110, 110H, 110SH, 250, 400, 600

Part of the Modulift Heavy Range

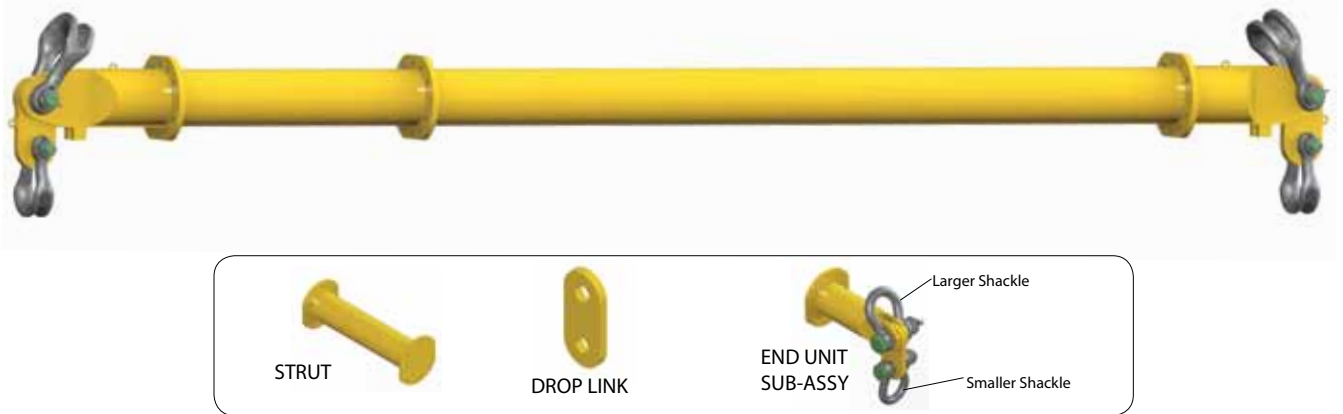


Modular Spreader Beams

Modular Spreader Beams provide the ideal solution for most lifting requirements – versatile and cost-effective, the Modulift range has capacity from 2 to 5000t with spans up to 100m/330'. The modular configuration and interchangeable components enable Modulift Spreaders to be reused over many lifts. Designed by our engineering experts and manufactured in our own specialist facilities; the Modulift range are the leading Modular Spreader Beams on the market.

Spreader Beams for up to 400t are in stock and available worldwide for distribution – please contact Bullivants for an immediate quote or further details.

Every Modulift Modular Spreader Beam consists of a pair of End Units and a pair of Drop Links, with interchangeable struts that can be bolted into the assembly between the End Units to either lengthen or shorten the beam to suit the requirements of the lift, making them reusable at different spans.



Why Modulift is the leading Spreader Beam on the Market?

Quality Engineering	Modulift are a team of specialist engineers designing innovative products to optimum specification to ensure a safe lifting environment around the world.
Interchangeable	The modular struts allow for multiple lengths to be configured for a variety of lifts. Mix and match End Units with struts when long length, yet light weight lifts are required.
Economical	One Modulift Spreader Beam can be used over and over again for years.
Portable	Our heaviest and longest strut is only 6m/20' – small enough for the back of a truck! Many of our Spreader Beam components can be handled by one person. Our QJ2 even comes in a handy carrying case complete with Shackles!
Lightweight	Our Spreader Beams are specially designed to provide you with a lightweight solution so your cranes can work at maximum capacity without the weight of heavy lifting gear.
Easy to Store and Transport	For improved inventory control, organized components, quick retrieval and mobilization, ask about our storage systems, including logistics cradles and stillages.
Adaptability	Drop Links provide plus or minus 6° of rotation to allow for lower sling misalignment.
Quick Ship	Call us today – we have most standard sizes in stock and ready to ship!
Custom Applications	Have one of our engineers custom design a Spreader Beam for virtually any lift. Please ask a member of our team about this service.

One Beam Many Lifts

Interchangeable Components

For Larger Lighter Loads

For longer spans and lighter loads, additional components are available allowing you to optimise the weight of our higher capacity range of Modular Spreader Beams to carry out these lifts. These struts provide the backbone of our Spreader Beams when trying to achieve longer spans. We have two solutions that can make the system more flexible and cheaper for you by interchanging smaller capacity End Units and Drop Links.

- Step-Down End Units are designed for smaller sizes, up to the MOD 70
- Cone Adaptors accommodate the larger sizes

These additional components allow your existing Spreader Beam to become even more versatile over a number of lifts so you can remain cost-effective with your rigging and crane capacity requirements.

By stepping down the End Units to a more suitable capacity, you can optimise your Shackles and Slings to provide a lighter system overall.

There are a number of ways you can utilise our Modular Spreader Beams, for example;

Need a span of 20m/66' but are only lifting 70t - we can provide you with a MOD 250/70 giving you Cone Adaptors and MOD 70 End Units to bolt to MOD 250 struts to achieve the required overall Spreader Beam system.

Need to lift 24t but at 12m/40' - change our standard MOD 70 Spreader Beam End Units to Step-Down End Units and decrease the SWL to 24t allowing you to use smaller Shackles and Slings with the MOD 70 struts.

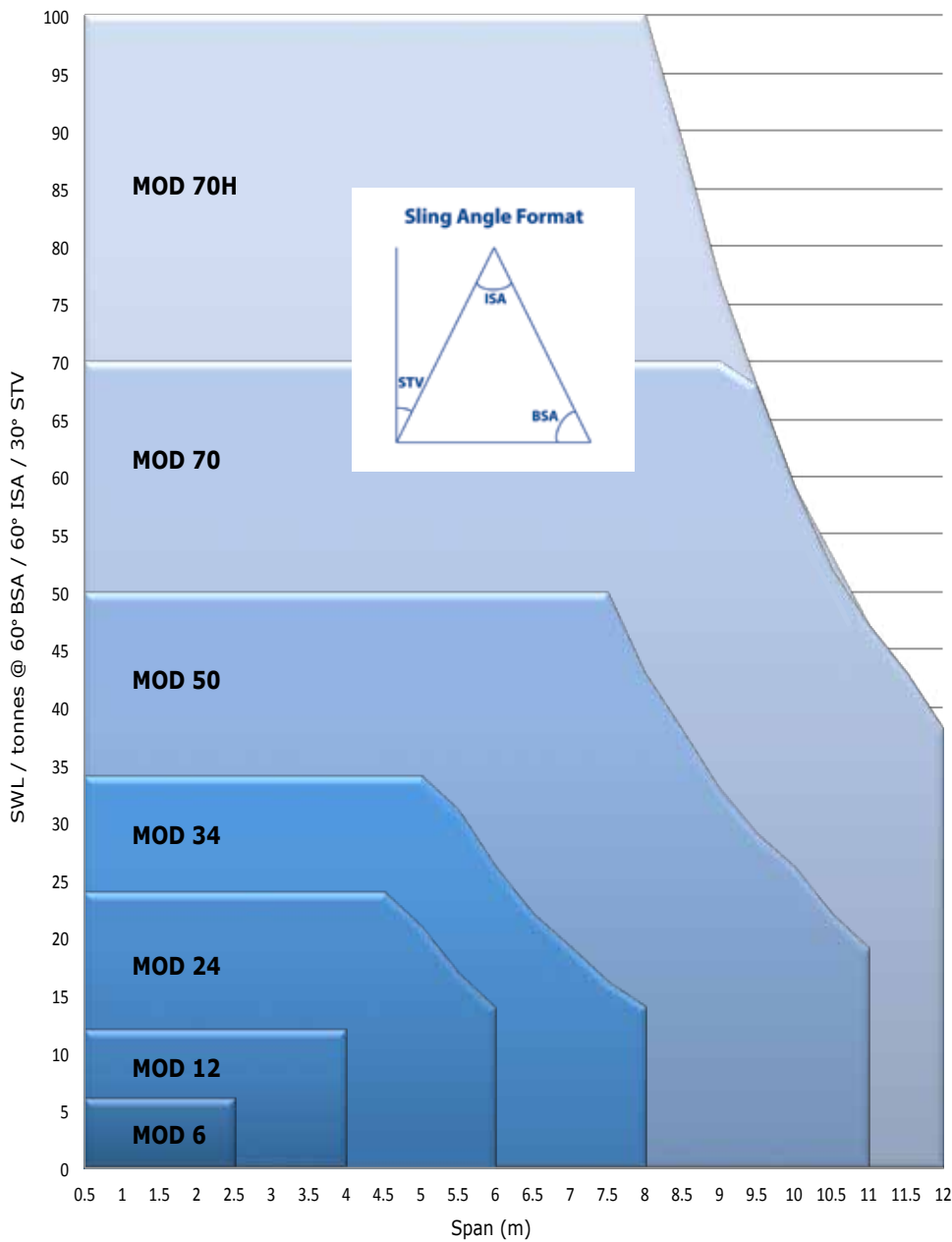
Need to lift 100t - if you already have a MOD 70 Spreader Beam, by changing the End Units to the MOD 70H End Units you can increase the SWL to 100t negating the need to buy a completely brand new Spreader Beam.

Using one of our Modular Spreader Beams enables you to be more flexible over a number of lifts without needing to buy a new Spreader Beam every time, our lightweight design also minimises the overall weight of the lifting equipment and the costs incurred whilst working between the hook and the load.



The Standard Range

Load v Span Chart - Modulift Spreader Beam Standard Range



What Size Shackle Do I Need?

MOD 6



TOP: 4.75t
LOWER: 3.25T

MOD 12



TOP: 8.5t
LOWER: 6.5t

MOD 24



TOP: 17t
LOWER: 12t

MOD 34



TOP: 25t
LOWER: 17t

MOD 50



TOP: 35t
LOWER: 25t

MOD 70/H



TOP: 55t/85t
LOWER: 35t/55t

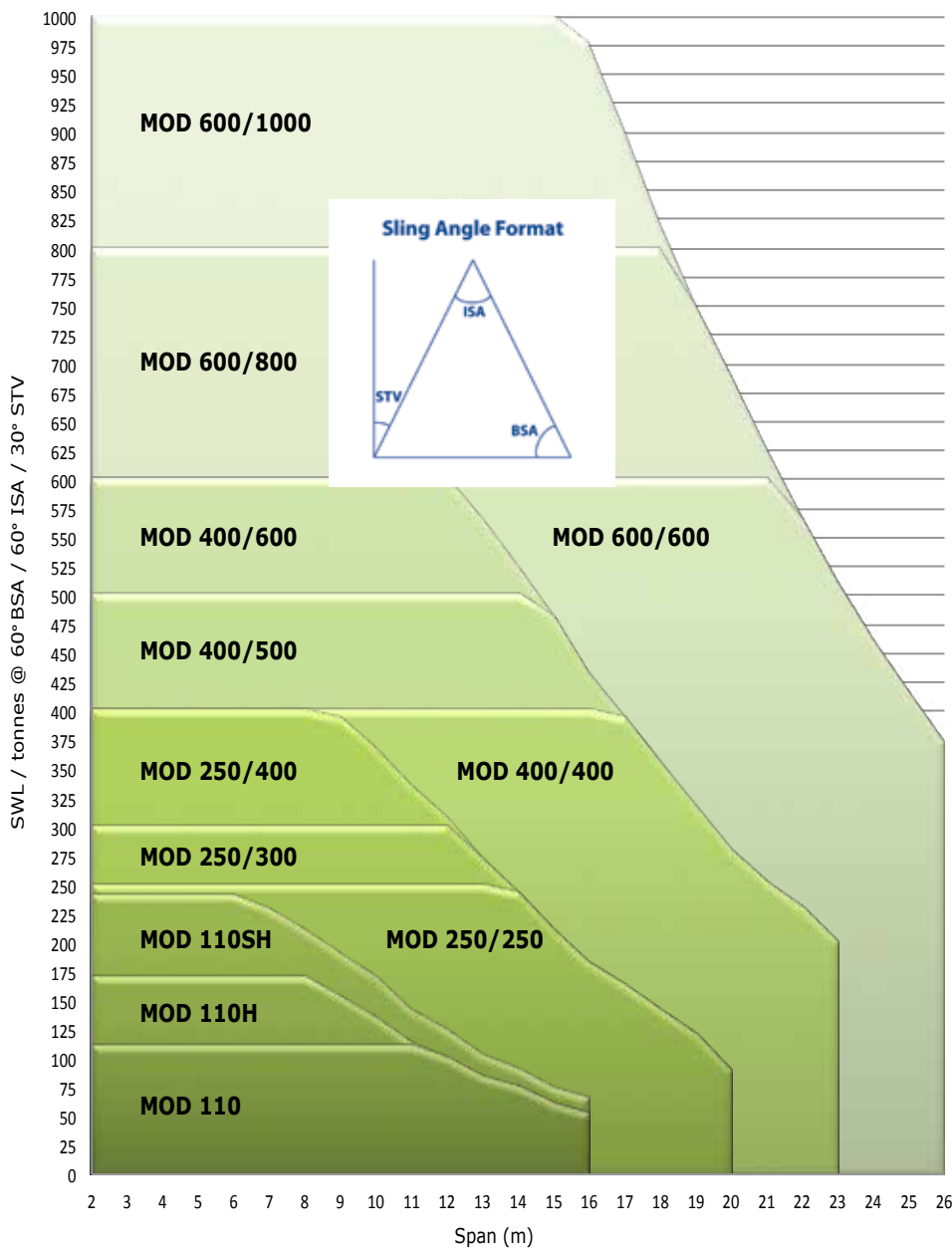
Components per Set

* Please note: Custom length Struts are available on request

SPREADER SYSTEM	STRUT														END UNIT	DROP LINK
	0.1M	0.2M	0.25M	0.3M	0.5M	0.6M	0.75M	1.0M	1.5M	2.0M	3.0M	4.0M	6.0M			
MOD 6	1	1		1		1		1							2	2
MOD 12			1		1		1	1	1						2	2
MOD 24					1			1		2					2	2
MOD 34					1			1		3					2	2
MOD 50					1			1		1		2			2	2
MOD 70/70H					1			1		1		2			2	2
MOD 110/110H/110SH					1			1		1		3			2	2
MOD 250-250/250-300/250-400								1		1	1			2	2	2
MOD 400-400/400-500/400-600								1		1	1			3	2	2
MOD 600-600/600-800/600-1000								1		1	1			3	2	2

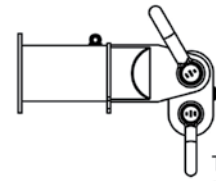
The Heavy Range

Load v Span Chart - Modulift Spreader Beam Heavy Range



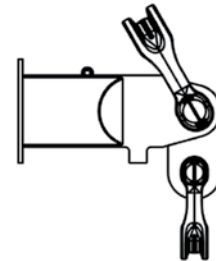
What Size Shackle Do I Need?

MOD 110/H/SH



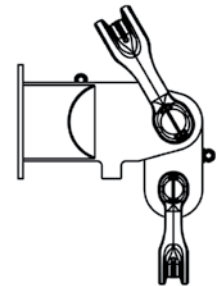
TOP: 85t/120t/150t
LOWER: 55t/85t /120t

MOD 250



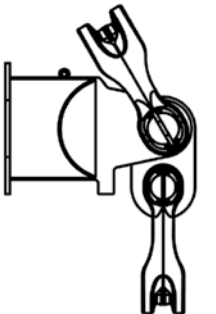
TOP: 200t - 300t
LOWER: 125t to 200t

MOD 400



TOP: 300t to 400t
LOWER: 200t to 400t

MOD 600+



TOP: 300t to 600t
LOWER: 200t to 500t

Weight per Set (kgs)

* Weight based on heaviest spreader in series using configuration recommended in user instructions

WEIGHT	MOD 6	MOD 12	MOD 24	MOD 34	MOD 50	MOD 70/70H	MOD 110/110H	MOD 110SH	MOD 250	MOD 400	MOD 600
Max Component Weight	8.1	19	41	51	140	240	367	444	860	1365	2665
Min Component Weight	0.6	1.3	5	7	11	17/32	44/55	63	90	135	135
Weight at Max Span	32	75	178	290	532	972/1090	1970/2130	2628	4895	8260	17260

Modulift - Lifting Experts

Fig 1

Fig 1: Lifting and positioning of the pedestrian footbridge that connects Wembley Stadium to the train station



Fig 2



Fig 2: '1 over 2' rig formation used in Oil Refinery building project

Fig 3: Skid being lifted by 2 x Spreader Beams and a single Lifting Beam



Fig 3

Regulations, Standards & Compliance

Each Modulift Spreader Beam series has been proven by being Proof Load Tested in the Modulift compression test rig and all products have been designed in accordance with the standards listed below:

Australia Compliance

AS 4991 - 2004: Lifting Devices.

UK & Europe Compliance

- BS EN 13155: 2003+A2:2009: Cranes – Safety – Non-fixed load lifting attachments
- DNV Standard for Certification No. 2.22 Lifting Appliances 2011
- Mod 6 up to Mod 800/1000 Type Approved by DNV
- LOLER: 1998 (Lifting Operations and Lifting Equipment Regulations)
- PUWER: 1998 (Provision and Use of Work Equipment Regulations)
- EC Machinery Directive 2006/42/EC
- BS EN 1993-1: 2005: Eurocode 3

USA Compliance

- ASME B30.20 - 2010: For Below-the-Hook Lifting Devices.
- ASME BTH-1 2011: Design of Below-the-Hook Lifting Devices.

We now have all our
Spreader Beams up to
1000t capacity
DNV Type Approved.

DNV Standard for Certification

DNV 2.22: Modulift Spreader Beams designs conform to DNV Standard for Certification No.2.22 Lifting Appliances. Modulift is the first and only Spreader Beam Manufacturer in the world to have the globally recognised DNV Type Approval for all Spreader Beams up to 1000t capacity in accordance with DNV's standard for Certification No. 2.22 for Lifting Appliances 2011, at no extra cost to the client.

For those customers who require a higher level of quality standard, Modulift also provides further options for project specific 3rd party verification.

When a project demands the highest level of certification Modulift are able to offer our customers varying degrees of additional DNV certification depending upon their individual QA requirements, including:

- Proof Load Test Survey Report and Record of Test
- DNV Certificate of Conformity for Manufacture & Test (CG3 in accordance with ILO convention 152)

Please ask about these additional services at the time of your enquiry.



Ask Modulift about the Level of Options Available to Ensure Your Safe Lift

Level 1. Standard Modulift Spreader Beams

In accordance with BS EN 13155 - 2003 and AS4991 - 2004. Available CE Marked and supplied with a Certificate of Conformity, up to 400t available off-the-shelf.

Level 2. Individual Proof Load Testing of Modulift Spreader Beams

Modulift offer an individual Proof Load Test service with or without 3rd party verification to those requiring a higher level of certification. Please ask for further information.

Level 3. Modulift Spreader Beams with project specific DNV Certification

Although our range Spreader Beams are now DNV Type Approved, we can also offer project specific DNV certification of individual Spreader Beams.

It is the ultimate in certification and quality control for the most demanding project specification; a Modulift Spreader Beam individually certified by DNV in terms of design, manufacturing and Proof Load testing. Supplied with a design review report and Certificate of Conformity for Manufacture and Test, issued by DNV.

Enhanced QA Options/Custom Design Solutions

Modulift recognise the high level QA requirements of the Oil & Gas, Offshore and Renewable Energy industries. In response to these high standards Modulift offer Enhanced QA Options to our standard Off-the-Shelf range of Spreader Beams - see our options list below.

Product Specification	Off-the-Shelf	Enhanced QA Options
Design	BS EN 13155 - 2003, BS EN 1993-1 - 1- 2005 ASME B30.20 - 2010, AS 4991 - 2004, DNV 2.22	Project Specific requirements
Materials	Impact tested to -20° C /-4°F in accordance with BS EN10025/10210/10219	Impact tested to -40° C /-40°F in accordance with BS EN 10025/10225/API SL
Welding	BS EN ISO 15614.1	
Paint Finish	Standard Finish - Yellow RAL 1003 2 Pack epoxy paint system	High build systems suitable for marine environments
Markings	Engraved stainless steel ID plate	ID plate and additional labelling
Testing	-	Proof Load Testing & NDT
Bolts	Grade 8.8 HT zinc plated	Low temperature, galvanised
Shackles	Rated to -20° C /-4°F	Rated to -40° C /-40°F
Slings	Rated to -40° C/ -40°F and BS EN 13414 -1 & -3 compliant	

Verification	Off-the-Shelf	Enhanced QA Options
DNV Type Approval	√	√
DNV Design Approval	√	√
Original Design Verification Proof Load Test	√	√
Job specific Proof Load Testing & NDT on individual beams	x	√
Third Party Verification of individual beams	x	√

Certification / Documentation	Off-the-Shelf	Enhanced QA Options
EC Declaration of Conformity	√	√
User Instructions	√	√
Material Certification	x	√
Inspection and Test Plan (ITP)	x	√
Welding, NDT & Proof Load Testing documentation	x	√
MRB (Manufactures Record Book)	x	√

We can design and manufacture a Custom Lifting Solution within 4 -6 weeks – providing expert engineering, manufacturing excellence and quality assurance.

Because not every load fits into a standard mould, our engineering team are lifting industry experts who will work with you and your team, to custom design and build the ideal solution for your lifting requirements. With innovative thinking, we can develop the right equipment to meet your needs whether they be height, environment, weight, flexibility of use, speed of assembly, or transportation requirements to name but a few – we can design a custom solution for you.

Modulift have been building and supplying lifting equipment with high level QA requirements across the Oil & Gas, Renewable Energy, Offshore, Maritime, OEM, Aerospace and Heavy Haulage industries worldwide. We have extensive experience in delivering equipment for these critical projects successfully, on time, and to meet the project’s individual requirements - we can design and manufacture a Custom Lifting Solution within 4 - 6 weeks!

Our sample Case Studies describe Custom Projects where we have either designed and manufactured an entirely ‘Custom’ lifting solution; Or we have adapted our standard designs/products - tailoring and manufacturing them to meet the highest level of QA standards. See our Case Studies to read about the individual requirements for each lifting project.



Modulift offer a complete Design & Manufacturing service that incorporates key deliverables such as:

- ITP / Quality Plan
- Full material traceability – 3.1 or 3.2
- Weld Book: WPQR, WPS, WQTC & Weld Mapping
- Procedures & Reports: NDT, Proof Load Testing, and painting

Our team of welder/fabricators are qualified to BS EN 287-1, with specification & qualification of weld procedures to BS EN ISO 15614-1. Welding can also be carried out in compliance with other international standards.

International Standards

In addition to the compliance shown on **Page 9**, there are several International Standards that Modulift’s Spreader Beams can be designed to comply with, particularly in reference to offshore applications:

- DNV - OS - H205 - Lifting operations (VMO Standard - Part 2-5)
- Lloyds Register: Code for Lifting Appliances in a Marine Environment
- GL Noble Denton: Guidelines for Marine Lifting Operations 0027/ND
- API RP 2A-WSD
- OSHA CR 29 1926.251

Engineering Consultancy

With over 20 years experience, Modulift's team of Lifting Engineers are able to provide expert advice in all aspects of onshore and offshore lifting. We can also provide a custom designed and engineered lifting solution for all your lifting requirements.

Engineering Consultancy

Whether you require advocacy in safe and effective procedures for the use of heavy lifting equipment or need RFID training to enable you to remotely take complete control over your assets, Modulift are here to help.

Custom Design Services

Not every load fits into a standard lifting mould. Our team of engineers are lifting industry experts capable of coming up with the ideal solution for your lifting requirements. With innovative thinking we can develop the right equipment to meet your needs whether they be height, environment, price, weight, flexibility of use, speed of assembly or transportation requirements to name but a few - we can design a solution for you.

Rig Design

When dealing with customers who require lifts that involve more complex rigs and combinations of Modulift Spreader Beams or where the item being lifted does not have a central centre of gravity, our customers can call on our assistance. We will make available our engineering team who will assist by designing the most appropriate solution using the Modulift range of products.

Services Available

- Engineering Design
- Lifting Consultancy
- RFID Project Management
- Engineering Drafting
- Rig Planning Services
- Lifting and Rigging Training
- Contract Lifting Management and Site Supervision



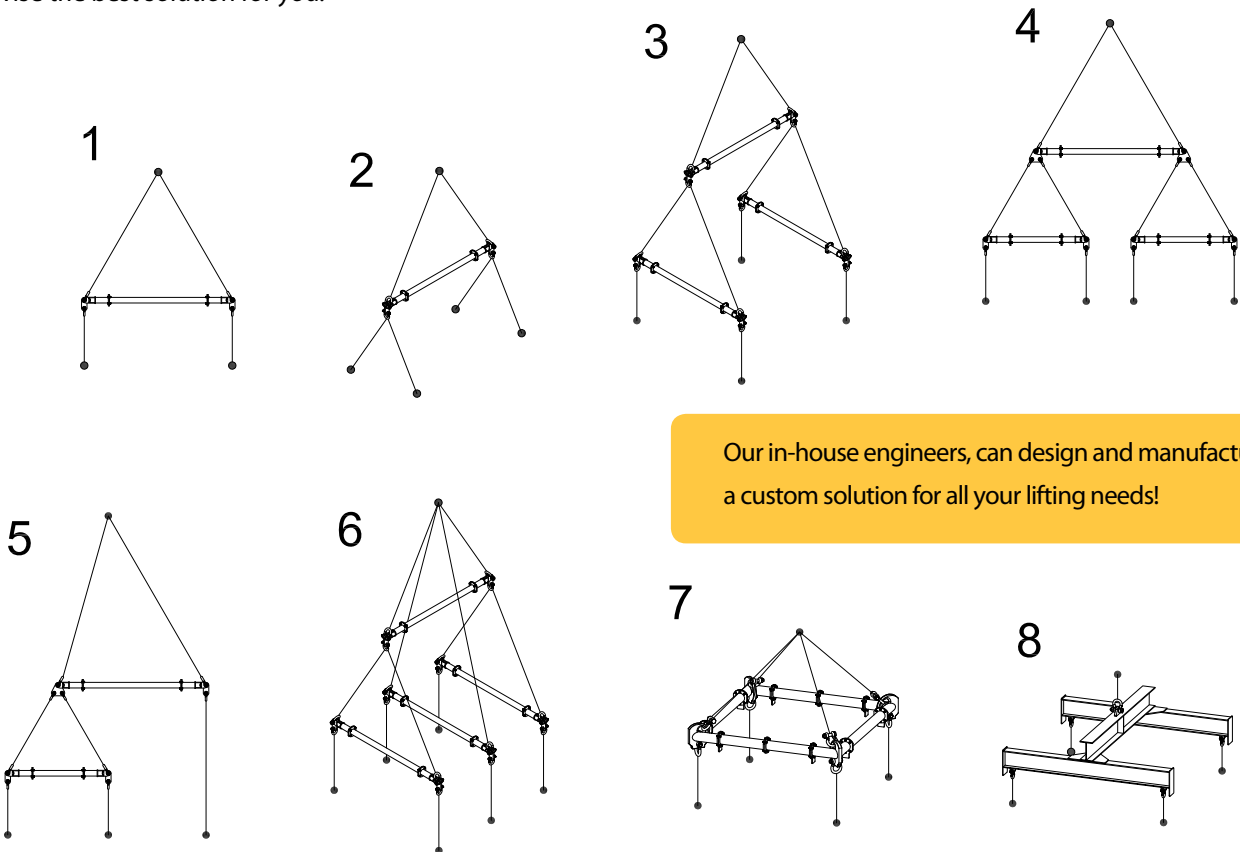
Why Use Modulift?

- All our equipment conforms to the highest engineering standards and meets or exceeds government and industry regulations such as AS 4991 - 2004 and BS13155, and Lifting Operations and Lifting Equipment Regulations 1998 (LOLER)
- Modulift have ISO 9001: 2008, 14001:2004 & 18001:2007 and are members of LEEA
- Using a specialist engineering company gives you peace of mind for a safe lift with engineers on hand to ensure everything runs smoothly
- We can design a solution specifically designed for your needs minimising potential problems associated with using incorrect equipment
- Reduced costs associated with: over engineering; excessive design times, individual fabrication requirements, testing and liability insurance; and damaged loads

Rig Planning Services

At Modulift we understand that organising a lift can be a complicated process with many factors that need to be considered. On top of all the other considerations is the rig planning for the lift. With our highly trained specialist Lifting Engineers, Modulift can help you.

It may be a simple configuration or it may be a more complicated rig. Send us details of your lift including weight, lifting point and position, height restrictions, load type, centre of gravity (COG) position, crane type and lifting environment and we can help advise the best solution for you.



Our in-house engineers, can design and manufacture a custom solution for all your lifting needs!

Your Guide to Some of the Configurations Available to You

1. Simple Single Beam 2 point Lift

A single Spreader Beam is the simplest configuration and is suitable for 2 point lifts. The Spreader Beam absorbs the compression forces to protect the load being lifted.

2. Single Beam 4 Point Lift

This configuration again used a single beam where the load being lifted has four individual lifting points.

3. 1-Over-2 Rig

We use this configuration when vertical slings are essential for 4 point lifts. By varying the sling lengths, we can also take into account an offset center of gravity.

4. 1-Over-2 Inline Rig

Ideal for those lifts where the span is long and potential bending of the load is a problem. Further cascading layers are available to increase the number of lifting points

5. 1-Over-1

Where there are an uneven number of points to lift from a 1 over 1 system can be used to lift the load whilst still providing a balanced rig.

6. Various Multi Spreader Beam Rigs

With our expert help we can address most lifting issues using a combination of our products to fit the application and the circumstances.

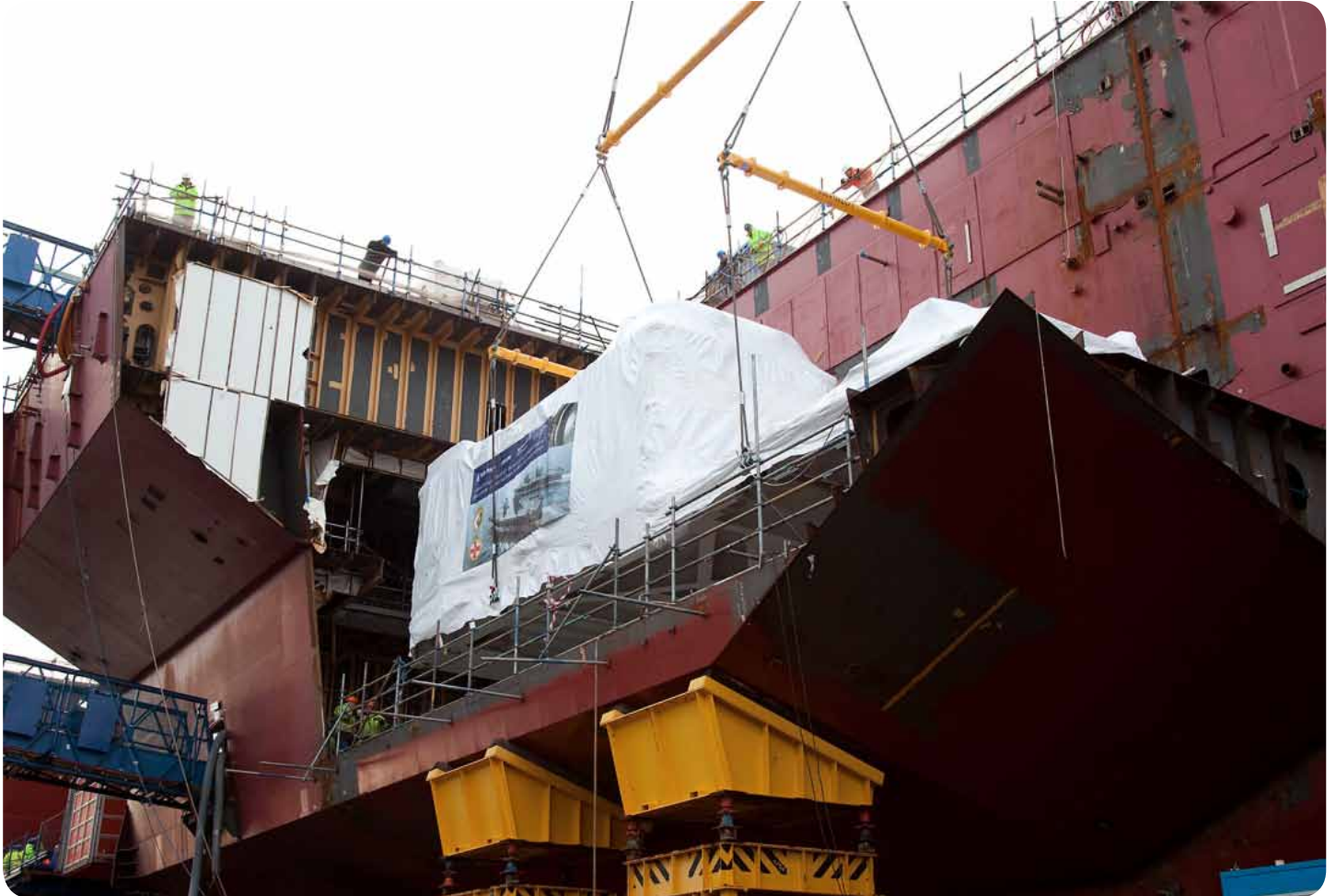
7. CMod Spreader Frame

The CMod spreader frame uses corner units to connect existing Modulift struts into a 4 point modular spreader frame. This uses less headroom than a 1 over 2 rig.

8. Lifting Frame (H Frame)

For extremely low headroom applications, Modulift can design and fabricate a bespoke lifting frame to suit your exact requirements

Modulift Lifts the Worlds Largest Gas Turbine!



In January 2013, global spreader beam manufacturer, Modulift, designed and built spreaders to lift the world's most powerful gas turbine: the Rolls-Royce MT30 turbine was installed into the Royal Navy's new aircraft carrier HMS Queen Elizabeth, at Babcocks Rosyth Shipyard in Scotland. Rolls Royce viewed the lifting of the gas turbine as a "significant milestone" in the Queen Elizabeth shipbuilding programme.

Having worked together on a number of heavy lift projects, Rolls-Royce approached lifting experts Modulift to custom design and manufacture the lifting solution for the 50 tonne MT30 turbines. For Modulift, the pinnacle of this project was the successful lift and installation of the steel housed turbine onto the ships structure.

In order to design the rig to lift the 50 tonne MT30 turbines, Modulift took key information that was provided such as the centre of gravity position, and created detailed rig drawings - the aim was to achieve a level lift using 3 spreader beams in a 'one over two' formation, and ensuring that the slings were vertical at each corner. This was achieved by firstly specifying custom length struts so that the Modulift spreader beams were each of an exact length, and secondly by providing unequal length top slings to take into account the CoG position.

Sue Caples, Operations Manager and Head Engineer at Modulift said "The Gas Turbine had a 75/25 offset centre of gravity which meant that we had to design a lifting rig that would enable the turbine to be lifted level despite the extreme offset CoG. We achieved this by designing a '1 over 2' Lifting Rig that had different length top slings so that the crane hook would be directly over the centre of gravity during the lift. It is important for loads to be lifted level particularly for installations such as this one, and it was a great success because the load was level within 0.2 degrees from horizontal. We are very pleased to have provided the lifting equipment for such a prestigious project"

...Rolls Royce viewed the lifting of the gas turbine as a "significant milestone" in the Queen Elizabeth shipbuilding programme.

Manufacture of the spreader beams was carried out to exacting standards and procedures which captured the need for all aspects of the manufacturing process to be controlled and compliant with order requirements.

Prior to painting the spreader beams, Modulift conducted Proof Load Testing using its purpose built Compression Test Rig. All of the spreader beams were individually assembled and loaded one at a time into the compression test rig. The designated proof load was applied, (for this project the proof load factor was SWL + 25%). Testing of all of the spreader beams was successfully completed without any issues and a final post-test MPI examination verified that there were no weld defects after testing. The drop links for the spreader beams were then proof load tested in Modulift's own tensile test rig using the same proof load factor as the spreader beams.

Richard Charlton of Rolls-Royce commented "All went to plan with not a single problem. The Babcock shipyard had lots of Modulift beams on site and assembled and rigged the beams very easily. Many thanks for Modulift's hard work."



Modulift Modular Spreader Frames work with existing struts from our Modular Spreader Beam range

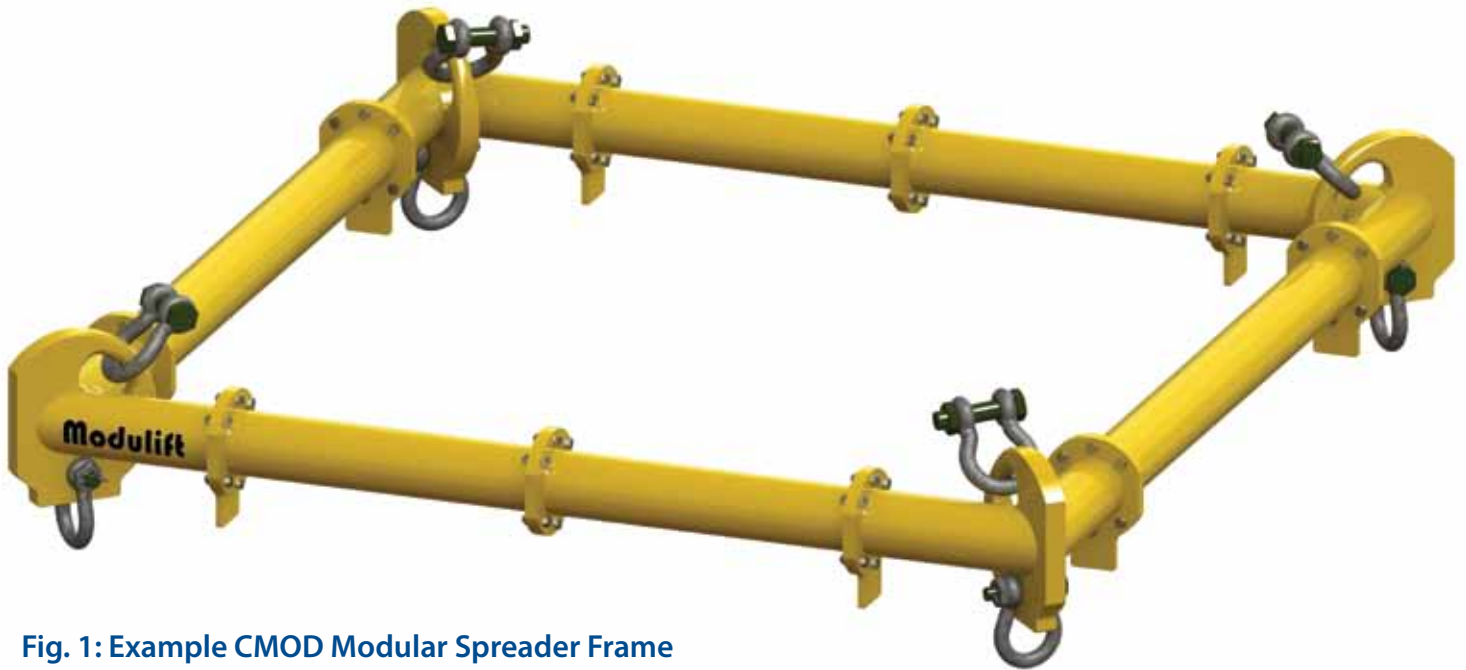


Fig. 1: Example CMOD Modular Spreader Frame

Modulift, the market leaders in Spreader Beam design and manufacture, have extended their modular offering, by launching the CMOD Modular Spreader Frame! A truly adaptable frame that maintains its engineering principles as its configuration adapts. Designed with ease and economy in mind - the CMOD is simple to set up, manoeuvre, and reconfigure to any size frame - allowing for multiple uses and diverse application.

The CMOD is a modular frame utilising Corner Units which are compatible with our existing Spreader Beam Struts and is modular in length and width. Every CMOD Spreader Frame consists of 4 x Corner Units, with intermediate Struts that can be bolted into the assembly to achieve different spans. Existing customers can adapt their Spreader Beam into a frame, by simply bolting on the corresponding Corner Units and any additional Struts required.

Even the largest CMOD can be easily transported as the frame is broken down into modular parts, saving the cost of specialist transportation.



System Benefits

- Cheaper and easier to transport than a fixed system
- Easy to set up, handle and manoeuvre
- Re-configure the frame to any size to allow for multiple uses
- The corner plate has a bow (like the shackle). This means that a reversed Shackle can contact the plate 'bow to bow' allowing it to easily rotate to suit any angle of sling and setup of frame without de-rating the Shackle

Design Strengths

The plate is made of high strength carbon steel and is specifically designed to withstand any bending, and transfers the compression to the strut in an almost purely axial form. The system was designed to BS EN 13155 – Non Fixed Lifting Load Attachments and the method of Shackle connection has been approved by Van Beest.

CMOD T-pieces

Elaborating on this popular concept Modulift has now developed a T-Piece to work in conjunction with the CMOD. This allows the frame to become a 6-point lift, (8-point, 10-point and so forth on request) adding yet another dimension to your Modulift equipment. Spans of up to 40m x 16m and capacities of up to 200t are available as standard.



CMOD Load Charts

Load v Span Chart - CMOD 6 to CMOD 24

WLL / tonnes @ 60° ISA

2.5	CMOD 6				8
2			8	8	
1.5		8	8	8	
1	8	8	8	6	
0.5	8	8	8	6	6
	0.5	1	1.5	2	2.5

WLL / tonnes @ 90° ISA

2.5	CMOD 6				6
2			6	6	
1.5		6	6	6	
1	6	6	6	4	
0.5	6	6	6	4	4
	0.5	1	1.5	2	2.5

WLL / tonnes @ 60° ISA

4	CMOD 12							16
3.5					16	16		
3				16	16	15		
2.5			16	16	15	14		
2		16	16	16	14	13		
1.5		16	16	16	16	14	12	
1	16	16	16	16	16	14	12	
0.5	16	16	16	16	16	14	12	
	0.5	1	1.5	2	2.5	3	3.5	4

WLL / tonnes @ 90° ISA

4	CMOD 12							9
3.5					9	9		
3				9	9	8		
2.5			9	9	8	8		
2		9	9	9	8	7		
1.5		9	9	9	9	8	6	
1	9	9	9	9	9	8	6	
0.5	9	9	9	9	9	8	6	
	0.5	1	1.5	2	2.5	3	3.5	4

WLL / tonnes @ 60° ISA

6	CMOD 24					23
5				30	21	
4			30	24	19	
3		30	30	24	18	
2		30	30	30	24	17
1	30	30	30	24	22	16
	1	2	3	4	5	6

WLL / tonnes @ 90° ISA

6	CMOD 24					13
5				17	12	
4			19	13	10	
3		19	19	13	10	
2		19	19	17	13	9
1	19	19	19	13	12	9
	1	2	3	4	5	6

(X & Y Axis span in metres, WLL in metric tonnes)

Load v Span Charts - CMOD 34 to CMOD 70

WLL / tonnes @ 60° ISA

8									24
7							32	23	
6					40	31	22		
5				40	40	28	20		
4			40	40	34	26	19		
3		40	40	40	34	24	18		
2		40	40	40	40	32	23	17	
1	40	40	40	40	34	30	22	16	
	1	2	3	4	5	6	7	8	

WLL / tonnes @ 90° ISA

8									13
7							18	13	
6					22	17	12		
5				27	22	16	11		
4			27	27	19	15	10		
3		27	27	25	19	13	10		
2		27	27	27	22	18	13	9	
1	27	27	27	27	19	17	12	9	
	1	2	3	4	5	6	7	8	

WLL / tonnes @ 60° ISA

11										32	
10								41	31		
9							50	39	29		
8						60	50	48	37	28	
7					60	50	45	35	27		
6				60	60	50	43	33	26		
5			60	60	60	50	40	32	25		
4			60	60	60	50	49	38	31	24	
3		60	60	60	60	50	47	37	30	23	
2		60	60	60	60	50	45	36	29	23	
1	60	60	60	60	60	50	44	35	28	22	
	1	2	3	4	5	6	7	8	9	10	11

WLL / tonnes @ 90° ISA

11											18
10									23	17	
9								28	21	16	
8							28	27	20	15	
7						34	28	25	19	14	
6				40	34	28	24	18	14		
5			40	40	34	28	23	17	13		
4			50	40	40	28	28	21	17	13	
3		50	50	40	40	28	26	21	16	12	
2		50	50	50	40	34	28	25	20	16	12
1	50	50	50	50	40	34	28	25	20	15	12
	1	2	3	4	5	6	7	8	9	10	11

WLL / tonnes @ 60° ISA

12												63
11										70	60	
10									80	70	58	
9								80	80	70	55	
8							80	80	80	67	53	
7						80	80	80	70	65	51	
6					80	80	80	70	60	62	49	
5				80	80	80	80	70	60	60	47	
4			80	80	80	80	80	70	60	58	46	
3		80	80	80	80	80	80	70	60	56	45	
2		80	80	80	80	80	70	70	60	55	44	
1	80	80	80	80	80	80	70	70	60	54	44	
	1	2	3	4	5	6	7	8	9	10	11	12

WLL / tonnes @ 90° ISA

12												36
11										40	34	
10									40	40	33	
9								46	40	40	31	
8							57	46	40	38	30	
7						60	57	46	40	37	29	
6					60	60	57	40	34	35	28	
5				60	60	60	50	40	34	34	27	
4			60	60	60	60	50	40	34	33	26	
3			60	60	60	60	50	40	34	32	26	
2		60	60	60	60	60	50	40	34	31	25	
1	60	60	60	60	60	60	50	40	34	31	24	
	1	2	3	4	5	6	7	8	9	10	11	12

(X & Y Axis span in metres, WLL in metric tonnes)

CMOD 110 graphs available on request

NEW SOUTH WALES

Muswellbrook

12 Enterprise Crescent,
Muswellbrook NSW 2333
Ph: (02) 6544 9000
Fx: (02) 6542 5799
Em: muswellbrook@bullivants.com

Newcastle

32 Parker Street,
Carrington NSW 2294
Ph: (02) 4969 4755
Fx: (02) 4962 1468
Em: newcastle@bullivants.com

Sydney

10-14 Kellogg Road,
Glendenning NSW 2761
Ph: (02) 9208 3600
Fx: (02) 9625 3355
Em: sydney@bullivants.com

Wollongong

5 Investigator Drive,
Unanderra NSW 2526
Ph: (02) 4272 1455
Fx: (02) 4272 1430
Em: wollongong@bullivants.com

NORTHERN TERRITORY

Darwin

2 Cato Street,
Winnellie NT 0820
Ph: (08) 8984 3299
Fx: (08) 8984 4946
Em: darwin@bullivants.com

VICTORIA

Melbourne

114 - 116 Boundary Road,
Braeside VIC 3195
Ph: (03) 9585 1288
Fx: (03) 9585 8948
Em: melbourne@bullivants.com

SOUTH AUSTRALIA

Adelaide

1/334 Cormack Rd,
Wingfield SA 5013
Ph: (08) 8260 4711
Fx: (08) 8260 5610
Em: adelaide@bullivants.com

Roxby Downs

3 Gosse Street,
Roxby Downs SA 5725
Ph: (08) 8671 3255
Fx: (08) 8671 3288
Em: roxby@bullivants.com

QUEENSLAND

Brisbane

81 Colebard Street West,
Acacia Ridge QLD 4110
Ph: (07) 3277 9855
Fx: (07) 3277 2182
Em: brisbane@bullivants.com

Cairns

86-88 Aumuller Street,
Cairns QLD 4870
Ph: (07) 4035 4777
Fx: (07) 4035 4784
Em: cairns@bullivants.com

Emerald

Cnr of Cameron Road & Munro Road,
Emerald QLD 4720
Ph: (07) 4980 0900
Fx: (07) 4987 5627
Em: emerald@bullivants.com

Gladstone

19 Beckinsale Street,
Gladstone QLD 4680
Ph: (07) 4972 9449
Fx: (07) 4972 7881
Em: gladstone@bullivants.com

Mackay

43-51 Diesel Drive,
Paget QLD 4740
Ph: (07) 4841 9600
Fx: (07) 4952 2792
Em: mackay@bullivants.com

Mt Isa

1/16 Enterprise Road,
Mount Isa QLD 4825
Ph: (07) 4743 2849
Fx: (07) 4743 2876
Em: mountisa@bullivants.com

Toowoomba

335 Taylor Street,
Toowoomba,
QLD 4350
Ph: (07) 4634 9155
Fx: (07) 4634 2977
Em: toowoomba@bullivants.com

Townsville

2 Leyland Street,
Garbutt QLD 4814
Ph: (07) 4781 9400
Fx: (07) 4775 2668
Em: townsville@bullivants.com

WESTERN AUSTRALIA

Bunbury

5 Halifax Drive,
Bunbury WA 6230
Ph: (08) 9725 6380
Fx: (08) 9725 6371
Em: bunbury@bullivants.com

Kalgoorlie

Unit 6/46 Great Eastern Highway,
Somerville Kalgoorlie 6430
Ph: (08) 9022 0200
Fx: (08) 9021 5760
Em: kalgoorlie@bullivants.com

Karratha

Lot 120 Mooligunn Road,
Karratha WA 6714
Ph: (08) 9187 8200
Fx: (08) 9185 6377
Em: karratha@bullivants.com

Newman

34 Shovelanna Street,
Newman WA 6753
Ph: (08) 9175 9000
Fx: (08) 9175 5905
Em: newman@bullivants.com

Perth

2-10 Kewdale Road,
Welshpool WA 6106
Ph: (08) 9451 8133
Fx: (08) 9351 8073
Em: perth@bullivants.com

Port Hedland

4 Manganese Street,
Wedgefield WA 6721
Ph: (08) 9160 2500
Fx: (08) 9172 3635
Em: porthedland@bullivants.com

1300 722 999

info@ullivants.com

www.bullivants.com