

ARU

**Processed Cheese
Filling and Wrapping Machine**

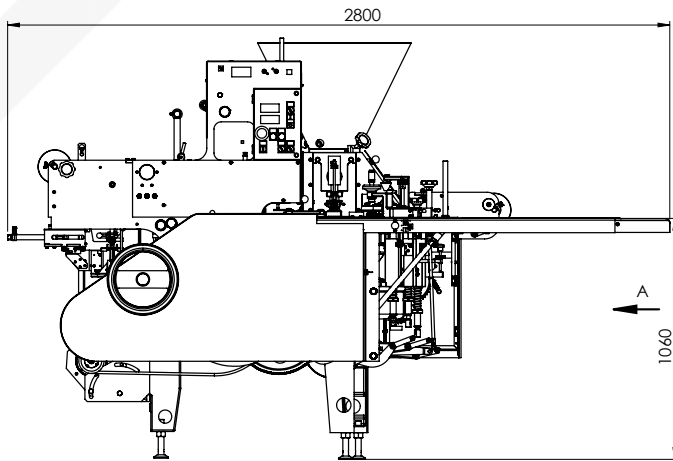


EGLI  **FASA**

PROCESSING TECHNOLOGY SINCE 1888

PACKAGING TECHNOLOGY SINCE 1959





ARU automatic packaging machine for foiling of processed and cream cheese with aluminum foil with or without easy opening system and labeling. The compact design, productivity, durability and easy technical maintenance are exclusive features of this machine.

TECHNICAL DATA

Machine type	rotary	
Output, bricks/min	up to 50	
Dose, g	15 – 100	
Temperature of packed product, °C	65 - 73	
Dimensions of the briquette (L x W x H), mm	40 - 120 x 40 - 52 x 10 - 40	
Wrapping material	aluminum foil*	
Roll external diameter, mm	up to 200	62,5 g – 50x50x24
Roll bushing diameter, mm	70 or 75	100 g – 71x52x26
Width of roll for briquette, mm	79-180	100 g – 90x40x26
Width of roll for covering, mm	39 – 90	100 g – 120x45x18
Thickness of foil, mm (μ)	0,012 – 0,014	
Labeling material	label paper	
Air (vacuum) compression, MPa (kg/cm ²)	-0,06 – -0,09 (-0,6 – -0,9)	
Air (vacuum) consumption, m ³ /min	0,3	
Rated power input, kVA (without tear strip applicator)	6,5	
Rated power input, kVA (with tear strip applicator)	7,6	
Voltage, V	230/400 ±10% AC	
Frequency, Hz	50	
Dimensions (L x W x H), mm	2800 x 1480 x 1760	
Approx. weight, kg	1500	

TEAR STRIP APPLICATOR TECHNICAL DATA

Machine type	horizontal
Output, bricks/min	up to 60
Tear strip material	OPP foil with the rear side tape to be heat sealed
Roll external diameter, mm	up to 180
Roll bushing diameter, mm	70 or 75
Width of roll for briquette, mm	70-155
Weight of OPP/OPP foil, g/m ²	43
Thickness of OPP/OPP foil, mm (μ)	0,05 (50)
Air compression, MPa (kg/cm ²)	0,045 – 0,6 (4,5 – 6,0)
Air consumption, m ³ /min	0,015
Rated power input, kVA	1
Voltage, V	230 +-10% AC
Frequency, Hz	50/60
Dimensions (L x W x H), mm	750 x 800 x 1450
Approx. weight, kg	160

*Aluminum foil with lacquer and heat seal lacquer.