



Magistra 73T

Magistra



With a reach of 5.50 to 8.30 metres, the Magistra range comprises seven models to choose from and a multitude of different settings. Forward offset, Visiobra concept, telescopic section, Magistra meets the needs of every professional. The entire range is resolutely public works oriented to take on even the most intensive work.

And because operator comfort is a Noremat priority, Magistra includes equipment that is truly appreciated by professionals like the oleopneumatic suspension system or the movement double speed zone.

M55
M60
Visiobra M61T
Visiobra M63T
68T
73T
83T



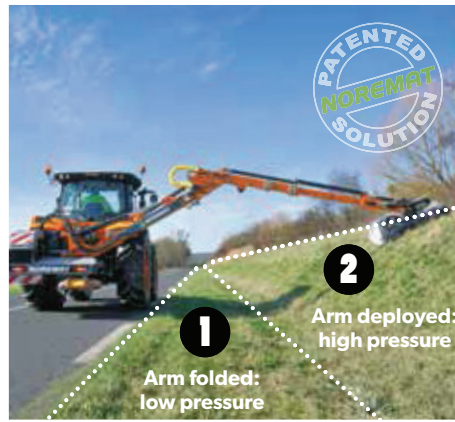
SAFETY AND COMFORT



Reversing shock absorber

*"A wrong move?
No risk of breakage"*

This mechanical safety feature protects the cylinder from any breakage hazard and limits the stress placed on the structure and the arm articulations during a reverse manoeuvre. If an unforeseen impact occurs, the cylinder mount slews out so that the arm can retract forward.



Dual pressure and horizontal safety slew

*"Incomparable
driving feeling"*

The arm is held in its working position with the same resistance to safety slew whether it is folded along the carrier (1) or fully deployed (2). The system works automatically thanks to different pressure levels in the slew cylinder. Thanks to safety slew, the mowing-head never comes into contact with the ground, even when folded, avoiding both wear to the head and debris.



A compact set

*"Transportation between
worksites
in complete safety"*

Thanks to the left pivot, the equipment fits within the width of the tractor when in the transport position. Semi-automatic locking retains the arm mechanically.



Two movement speed zones

*"Accurate movement even
with long reach"*

The movement speeds are adapted to match arm extension. Thanks to a position sensor, the arm is more reactive when it is closest to the carrier and more stable and accurate in areas further away.

Double accumulator suspension system

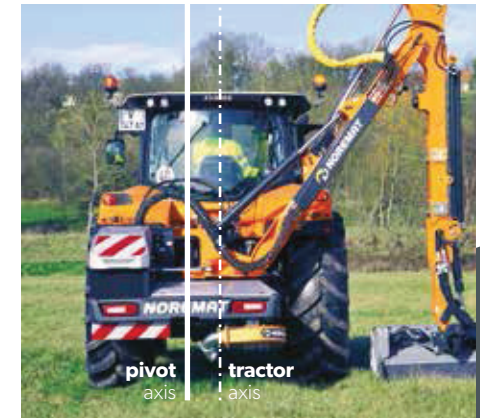
"For intuitive driving"

To ensure that suspension efficiency remains constant even with long arm reach settings, two accumulators work in series: the first (piston) accumulator is active when the arm is only slightly extended and the second (bladder) accumulator takes over when arm extension reaches its maximum. This system absorbs terrain variations and considerably reduces vibration levels.

LEFT PIVOT AND FORWARD OFFSET: EXCELLENT STABILITY, EXCELLENT VISIBILITY!

Stability

The left pivot and forward offset design (Noremat concepts) offer natural stability, avoiding the use of a counterweight. This concept ensures good safety and preserves tractor tyres.



Anti-tipping safety

As soon as the arm approaches its vertical position, an automatic mechanism transforms all of the actions of the two single action cylinders into dual action ones. The arm remains under full control regardless of its position.



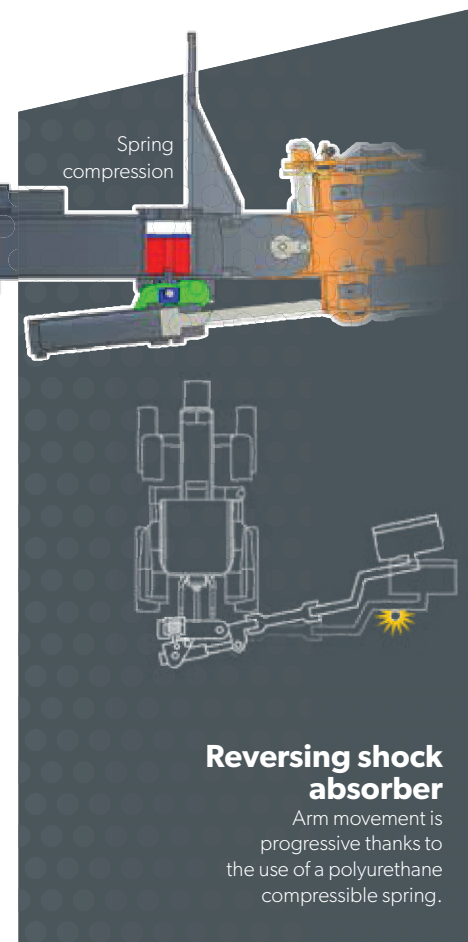
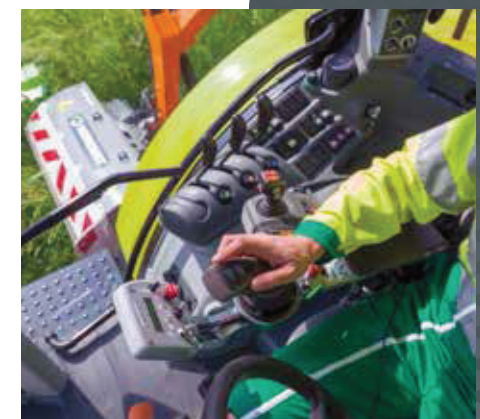
Working comfortably along narrow lanes

With the left pivot design, the cutting tool is as close as possible to the carrier (1.75 metres minimum lateral reach). An ideal position for working along narrow lanes without moving the tractor to the left and without needing additional arm articulations.



Visibility

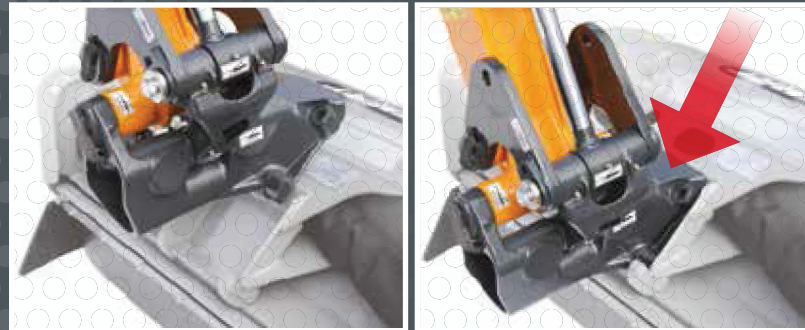
The variable telescopic forward offset enables the mowing-head to be moved significantly forward to cut next to the tractor cabin. This way the operator can see the road, the verge and the cutting tool in the same field of vision.



Reversing shock absorber

Arm movement is progressive thanks to the use of a polyurethane compressible spring.

DETAILS THAT MAKE A DIFFERENCE



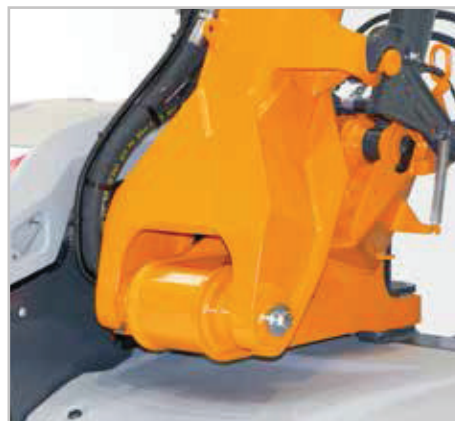
Coupling the tool quickly and easily

Semi-automatic coupling is essential for being able to change tools on your own and vary the kind of work.



Storage

The machine is fitted with three stands that are height adjustable using handles. This offers an ideal setting for storing the mowing arm. This also allows easily mounting and downloading the machine by presenting it at precise carrier height.



Fully heavy-duty steel structure

The pivot used for the Magistra range is a massive one. The axis is a one-piece component, all the way through, fitted with flanged, greased wear rings. Forces are distributed over the entire axis for maximum robustness.



Premium components and accessibility

Noremat equips their machines with the best hydraulic components available on the market (Sauer, Danfoss, Hydac...). The Magistra range has a closed circuit, piston pump and engine for the rotor circuit, for long lasting performance.



High efficiency cooling

"For constant power"

Cooled by a very high power fan and supplied by large diameter flexible pipes, the radiator was designed to achieve maximum efficiency. Its inclined position stops dust from accumulating and reduces the effects of any clogging. The removable front grid and the hood that opens upwards facilitate cleaning and maintenance.



Covers are strong and lightweight thanks to the use of HDPE*

"High resistance and acoustic comfort"

Recognised for its high resistance to impact damage, scratching, UV light and splashing, HDPE is also vibration absorbent and lowers acoustic emissions for remarkable driving comfort (not available in a left hand version).

*HDPE: High Density PolyEthylene

Easy maintenance in complete safety

"A 25% reduction in weight"

HDPE's light weight makes it easier to handle the covers (not available in a left hand version).

Magistra

the
Options

Magistra Visiobra M63T

Visiobra M61T and M63T SEEING EVERYTHING, CONTROLLING EVERYTHING, MANOEUVRING BETTER



A Noremat unique feature

The Magistra Visiobra is the first reach-mower in its category to adopt a variable forward offset telescopic section.



One eye on the head, the road and the verge

With the telescopic section out, the mowing-head is moved significantly further forward so that the operator can see the road, the verge and the cutting tool in the same field of vision.



Easy manoeuvring

Thanks to good visibility, manoeuvres to avoid obstacles are performed without changing the trajectory and the mowing-head can be positioned within a centimetre.

Magistra



01

01/ Panel support

A way to carry the required signs.



02



03

02/03/ Quick couplings and 1/4 turn isolation tap kit (optional)

To couple and uncouple cutting tools easily.

04/05/ Tool boxes

Handy and protected from the weather. Choose: Under cover or side opening.



04



05

06/ Built-in blower

It blows away any vegetation dispersed across the roadway.

07/ Light protection

As standard, the lights fit within the bumper.

The optional grids protect them for demanding applications (tree cutting, etc.).



06



07

Technical features

ROTOR HYDRAULIC CIRCUIT*

PTO	540 rpm	1000 rpm
Gear ratio	1 : 4	1 : 2,5
Hydraulic pump		
Type and displacement	piston 46 cc	piston 46 cc
Flow rate	100 l/min	115 l/min
Max. pressure	325 bar	325 bar
Power	73 hp	84 hp
Starter	electrical	electrical
Complete rotor stop	within 5 secs.	within 5 secs.
Mounting	flanged pump mounted on the gearbox	

Hydraulic motor

Type and displacement	piston 35 cc	piston 35 cc
Built-in exchange valve	yes	yes

MOVEMENT HYDRAULIC CIRCUIT*

PTO	540 rpm	1000 rpm
Gear ratio	1 : 4	1 : 2,5
Hydraulic pump		
Type	gear pump (cast iron body)	
Cubic capacity	23 cc (29 on 83T)	
Flow rate	50 l (63 on 83T)	58 l (73 on 83T)
Max. pressure	230 bar	230 bar
Mounting	flanged pump mounted on the rotor pump	

Hydraulic cylinders

Max. service pressure	250 bar
Special equipment	anti-drop valves to stop 1 st / 2 nd arms falling

Electrical and mixed controls

Main valve block	proportional hydraulic controls
Controls	electric with ergonomic joystick

Low pressure mechanical controls

Main valve block	proportional hydraulic controls
Controls	multilever

Oleopneumatic suspension

Accumulators	2 x 0.75 l - 250 bar max.
--------------	---------------------------

Accumulator controls

Electrical and mixed controls machine	electrical
Electrical and low pressure controls machine	manual

FILTRATION AND COOLING

Tank

Capacity	70 litres
----------	-----------

Oil

Type	80 W 90 - HV 46
------	-----------------

Suction / return filter

Filter and filtration	immersed filter - 10 micron rated
-----------------------	-----------------------------------

Cooling

Cooler	aluminium
Fan	electric - ø 305 mm
Exchange capacity	14.5 kW

STRUCTURE**

Frame

Material	HLE steel***
Structure & materials	tube 60 x 60 mm - thick. 6 mm tube 120 x 120 mm - thick. 8 mm steel thick. 8/15 mm

Machine pivot

Material	HLE steel***
Structure & materials	steel thick. 8 & 12 mm
Hitching element	special steel rod ø 70 mm

1st arm

Material	HLE steel***
Structure & materials	tube 160 x 160 mm - thick. 8 mm

straight and type M 2nd arms

Material	HLE steel***
Structure & materials	reconstituted tube - thick. 6 to 10 mm
Evolving 2 nd arm section	110 x 112 mm to 195 x 180 mm
Forward offset	650 mm

Visiobra type 2nd arm

Material	HLE steel***
Structure & materials	reconstituted tube - thick. 6 to 10 mm
Evolving 2 nd arm section	150x150 mm to 180 x 200 mm
Telescopic section	tube 120 x 120 mm - thick. 6.3 mm
Forward offset	650 mm to 1350 mm

2nd arm types 68T and 73T

Material	HLE steel*
Structure & materials	tube 150 x 150 mm - thick. 6 to 8 mm
Telescopic	tube 120 x 120 mm - thick. 6.3 mm

2nd arm type 83T

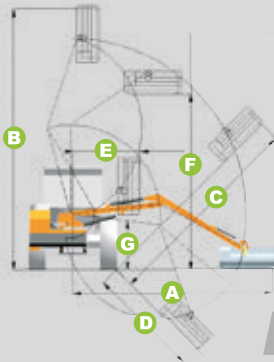
Material	HLE steel***
Structure & materials	tube 180 x 180 mm - thick. 6.3 to 10 mm
Telescopic	tube 150 x 150 mm - thick. 6.3 to 10 mm

Cutting tool pivot

Material	cast steel
Hitching element	special steel rod ø 70 mm

*The hydraulic circuit is validated and approved by the component suppliers

**All of the structures are validated by tests on a test bed that simulates three years in operation at maximum pressure
***HLE: High Elastic Limit



KINEMATICS

	M55	M60	68T	73T	83T	Visiobra M61T Telescopic retracted	Visiobra M61T Telescopic extended	Visiobra M63T Telescopic retracted	Visiobra M63T Telescopic extended
with mowing-head, 1.25 m wide									
A Maximum horizontal reach (1)	5.50 m	6 m	6.82 m	7.33 m	8.27 m	5.51 m	6.06 m	5.73 m	6.28 m
B Maximum vertical reach (2)	6.27 m	6.77 m	7.58 m	8.09 m	9.09 m	6.27 m	6.82 m	6.64 m	7.19 m
C Reach on a 45° upper embankment	5.36 m	5.86 m	6.69 m	7.20 m	8.17 m	5.36 m	5.91 m	5.68 m	6.23 m
D Reach on a 45° lower embankment	3 m	3.39 m	4.57 m	4.99 m	5.93 m	2.99 m	3.67 m	2.99 m	3.67 m
E Min. lateral reach (1)	1.75 m	1.75 m	1.75 m	1.80 m	2.05 m	1.75 m	1.75 m	1.75 m	1.75 m
F Maximum hedge height	4.23 m	4.61 m	4.90 m	5.29 m	5.90 m	4.22 m	4.51 m	4.59 m	4.89 m
G Headroom under 1st arm	1.15 m	1.20 m	1.30 m	1.23 m	1.35 m	1.28 m	1.30 m	1.28 m	1.30 m
Sweep angle	90°	90°	90°	90°	90°	90°	90°	90°	90°
Telescopic value	-	-	1.30 m	1.30 m	2 m	0.92 m	0.92 m	0.92 m	0.92 m
Tool orientation angle	230°	230°	230°	230°	230°	230°	230°	230°	230°
Transportation height (3)	3.50 m	3.73 m	3.76 m	3.78 m	3.95 m	3.57 m	3.57 m	3.57 m	3.57 m
Operational weight (4)	1965 kg	1975 kg	2175 kg	2225 kg	2450 kg	2255 kg	2255 kg	2270 kg	2270 kg

(1) measured from the tractor axis to the tip of the outer flail
(2) 50 cm ground clearance at the centre of the machine
(3) variable depending on the tractor and the tyres used
(4) with Unibroyeur 2 unit



ADAPTABLE TOOLS

01/ Unibroyeur 2 width 125 cm

02/ Unibroyeur 1000 width 100 cm

03/ Tactil' width 125 or 150 cm

04/ 16 Max width 160 cm

05/ Unibroyeur 1200 width 120 cm

06/ Forest-Broyeur width 125 cm

07/ Branch cutter

08/ Sawblade unit Lineo

09/ Sawblade unit Eliss'

10/ Ditch-cleaner

11/ Brush Klario



CONTROLS



01/ Hydraulic

Hydraulically assisted controls
Low pressure multilever

02/ Electrical/Hydraulic

Mixed electrical/hydraulic controls
Low pressure with joystick

03/ Electrical

Electrical digital controls



MOUNTING FRAMES



01

02

01/ Quick-mounting frame

02/ Versatile frame

except for Magistra 83T