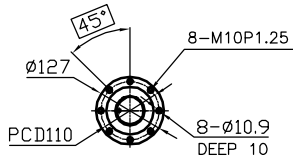
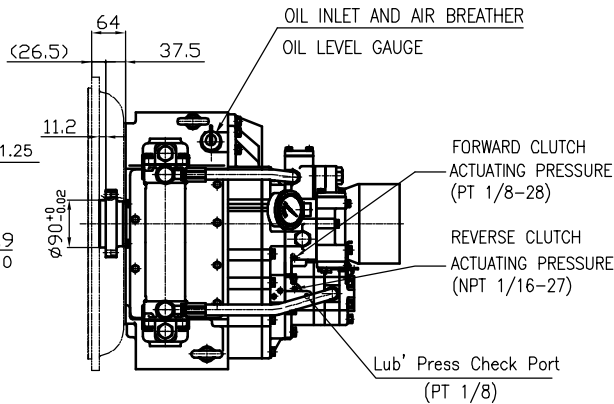


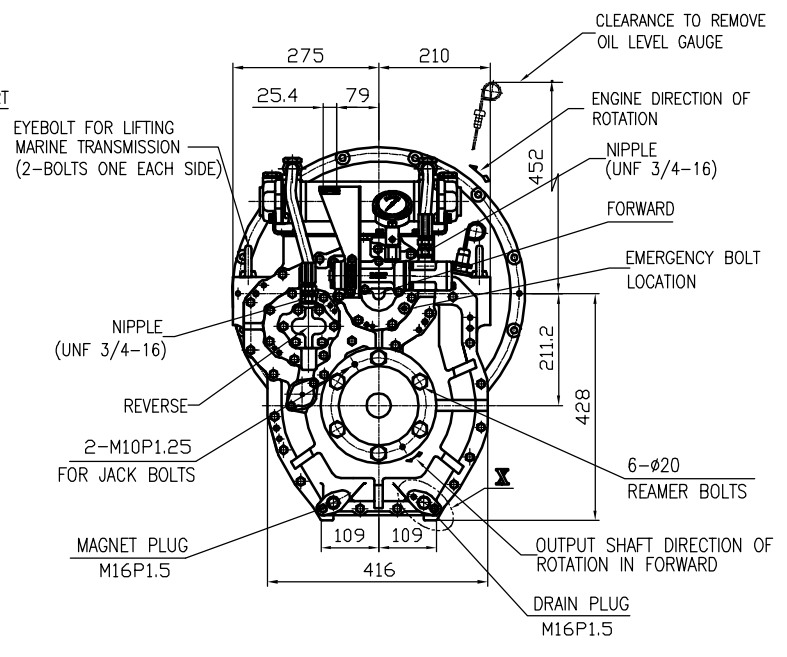
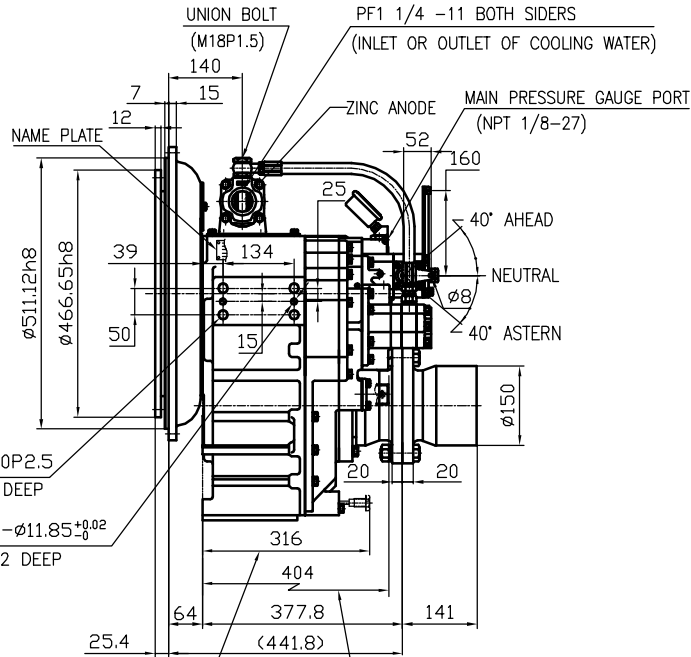
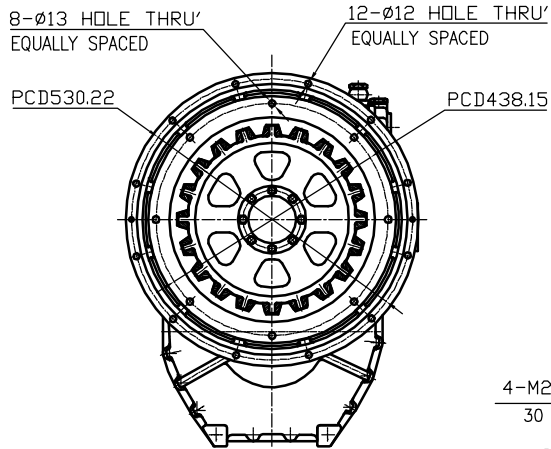
OUTPUT SHAFT COUPLING & PROPELLER COUPLING DIMENSION



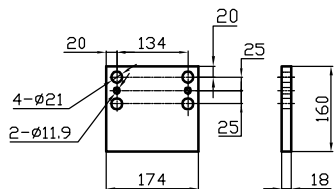
INPUT COUPLING DIMENSION



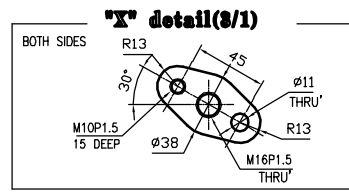
DMT 150H MARINE TRANSMISSION SPECIFICATION	
GEAR RATIO	1.83, 2.09, 2.51, 3.08, 3.43
TOTAL WEIGHT	APPROX. 287 kg(DRY)
OIL CAPACITY	APPROX. 5.5 L
OIL VISCOSITY	SAE # 30
OIL PRESSURE	1.96 ~ 2.35 MPa CLUTCH OIL
DIRECTION OF ROTATION	INPUT C.C.W VIEWED FROM THE STERN
IN FORWARD	OUTPUT C.W VIEWED FROM THE STERN
OIL CHANGE INTERVAL	THE FIRST 100HOURS OF INITIAL OPERATION AND EVERY 1000HOURS THEREAFTER
SHIFTING LIMIT	UNDER 50% OF THE RATED ENGINE SPEED
OIL COOLER	WATER FLOW 40 ~ 60L/min
	TEMPERATURE OF COOLING WATER MAX 32°C
OPERATING TORQUE OF SHIFTING LEVER	UNDER 2.94Nm



REMARK
 1.HOUSING: SAE#1
 2.DRIVING RING: SAE 14°
 3.COULING TYPE : RUBBER



BRACKET DIMENSION



TOLERANCE ON			PART NO.		PART NAME		QTY		MATERIAL		SIZE		REMARKS	
FRACTIONS	DECIMALS	ANGLES	NO.	REV.	NO.	REV.								
±	±	±	2012.06.18		DMT150H									
			DATE		SCALE		TYPE		MATERIAL		SIZE		REMARKS	
			2012.06.18		N/S		DMT150H		MARINE TRANSMISSION		15000GA~E-114RC		000	
			APPROVED BY		CHECKED BY		DRAWN		DESIGNED		DWG. NO.		REV.	
			JK.Kim		KS.Han		KC.Yoon				15000GA~E-114RC		000	
			D-I INDUSTRIAL				A 3		CODE ID. NO.					