

AGENT

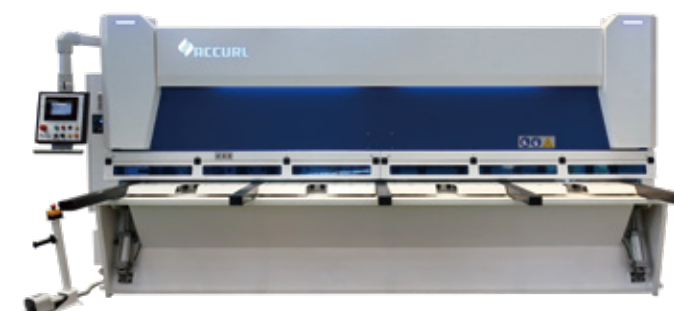


SINCE  
1988

Sheet metal  
working  
machines



## MASTER HIGH CUT PERFORMANCE



ACCURL MACHINE TOOLS  
CHINA | ACCURLUSA

Industrial Park In Bowang  
Ma'anshan, Anhui, China

T | +86 555 2780 563  
F | +86 555 2780 553  
E | info@accurl.com

[www.accurl.com](http://www.accurl.com)



This catalog is not a contractual document and only for illustrative purposes.  
ACCURL reserves the right to modify any specifications within this catalog without prior notice.





# CUTTING LASER



A territory with a consolidated technological background and the inventiveness of the Accurl family are the ingredients of the birth of ACCURL, One of the first company to apply hybrid & electric servo bending technology to the bending of sheet metal in 1988, thus gaining a substantial technological edge over the competition.

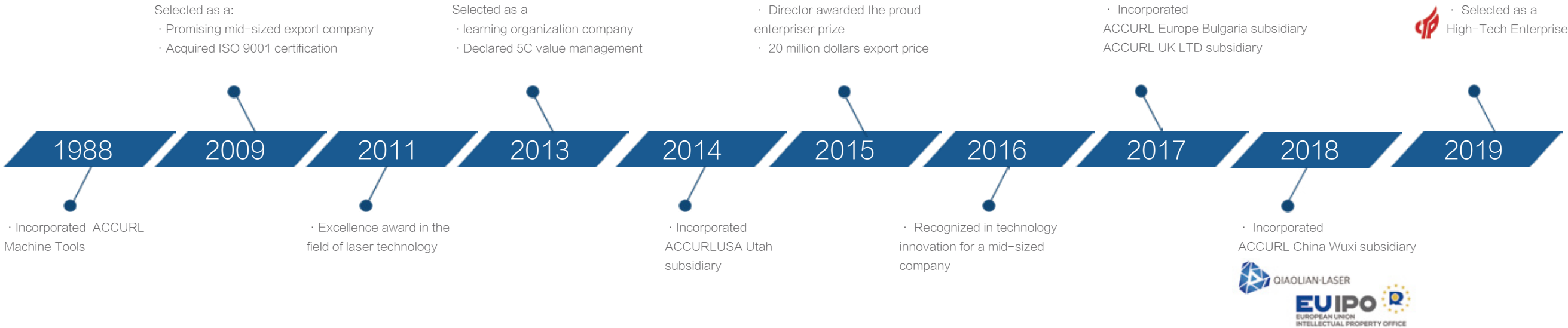
It is a lean and dynamic company that builds customised automated cutting, welding and bending systems and has a widespread sales network around the world.

SINCE  
1988

Sheet metal  
working  
machines



Shaping your future





# WE GO FURTHER

The best cut with the best performance and durability.  
vertical cut is the most effective and accurate system compared to alternative systems in guillotine cutting. With this system it is possible to vary the cutting angle depending on the type of material and thickness of the sheet.

ACCURL  
the excellence  
ACCURL shears have a unique cutting system that offers a vibration-free cut, greatly reducing cutting noise and increasing cutting quality.





SINCE  
1988

Sheet metal  
working  
machines

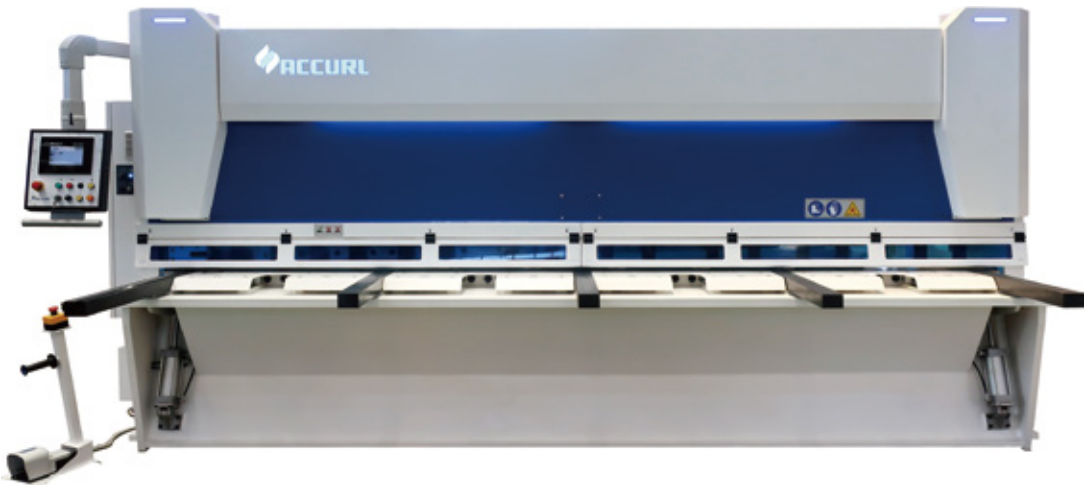


TABLE OF CONTENTS

	PAGE
.01 Top Features	7
.02 ACCURL Range	10
.03 Equipment	13
.04 Supports	15
.05 Back Gauges	17
.06 ACCURL Green	20
.07 Product Range	21
.08 Technical Specifications	24



MAIN ADVANTAGES

- .01 / Vertical cut
- .02 / Variable rake angle
- .03 / Unique structure
- .04 / Customizable
- .05 / Low vibration
- .06 / 3 years warranty

TOP FEATURES

ACCURL’s policy is based on an accurate selection of its components in accordance with the huge experience acquired over the years. All the machine components are certified in accordance with european standards.

/ VERTICAL CUT

**BLADE HOLDER ON BEARINGS**  
This system ensures the homogeneous distribution of the load along the entire length of the machine, resulting in a smooth cut, free of vibration.

/ ANGLE VARIATION

**VERSATILITY**  
As a means of minimising the “helix” effect, the MASTER guillotine allows the corresponding angle variation as a function of the plate thickness. This rake variation is performed automatically.

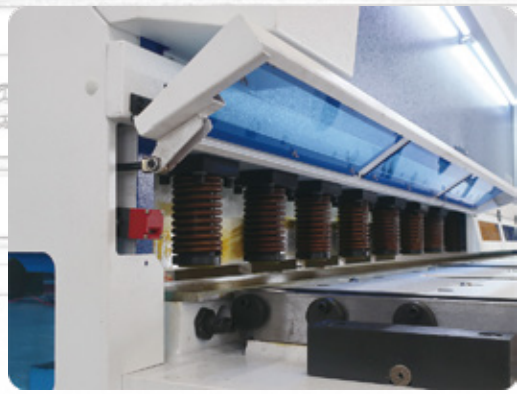
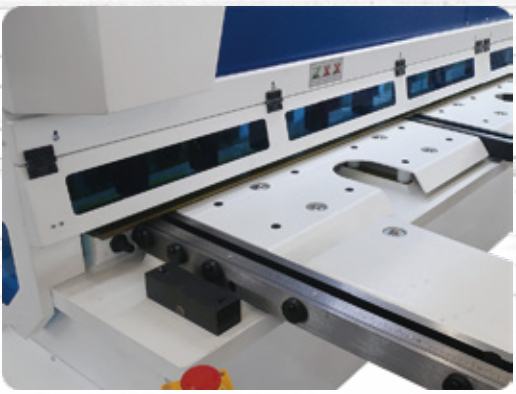
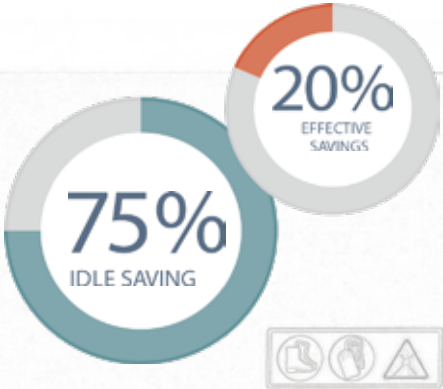
/ RAE SYSTEM

**CONFORT**  
While cutting, back gauge retracts automatically preventing collision with the plate.

/ STANDBY FUNCTION

**EFFECTIVE SAVINGS**  
This function is activated automatically whenever the machine didn’t make a cut in the last 5 minutes, even if it is being programmed.

**Standby  
FUNCTION**



# MAK- ING



## ACCURL FULLY CONFIGURABLE

ACCURL range is fully configurable following the customer's need.

The standard range features models with capacities varying from 4 to 30 mm.

Furthermore, ACCURL is capable of building machinery with different configurations upon customer's request.

## . ACCURL RANGE

CAPACIT	LENGTH(mm)	1050	1550	2050	2550	3050	4050	5050	6050
4mm		●	●	●	●	●	●	●	●
6mm			○	●	●	●	●	●	●
8mm				●	●	●	●	●	●
10mm				●	●	●	●	●	●
13mm				●	●	●	●	●	●
16mm				○	●	●	●	●	●
20mm						●	●	●	●
25mm					○	●	●	●	●
30mm					○	○	○	○	○

● Available ○ Under Request

## . AFTER SALES SERVICE

ACCURL enriches its service by means of quality and proximity to the customer.

The competence and experience acquired as manufacturer are key factors for the solutions provided and results achieved.

Being ACCURL's customer is to have a service of excellence on previous and after-sale counseling and support. We believe that technical assistance is vital to the best equipment performance and, as such, we decided to provide free lifelong training to all our customers since 2007.

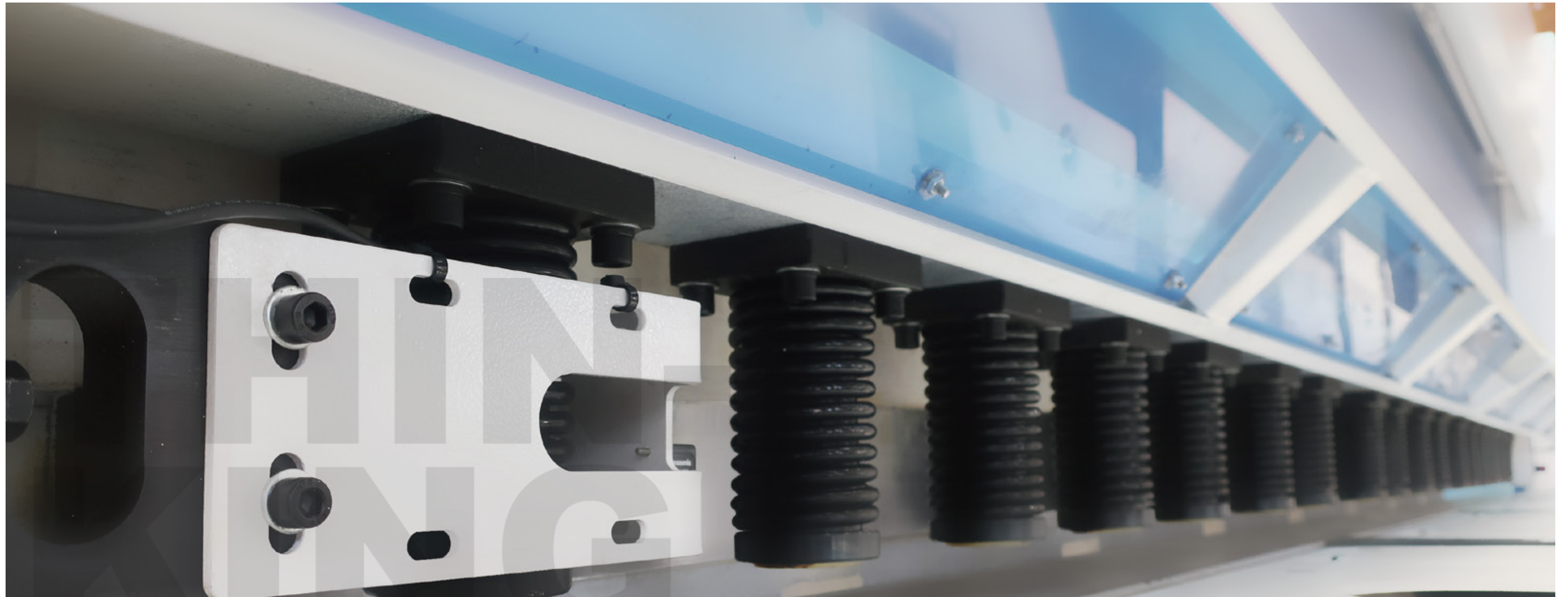
We guarantee immediate intervention for all emergencies, both regarding mechanical

failure as well as training or clarification of doubts. We employ highly skilled and experienced technicians to provide customers with the best advice, searching for the best metal plate cutting and shaping solutions.

We provide our customers with qualified technical service, always working with the following goals:

- PROBLEMS SOLUTION AT THE FIRST CONTACT;
- QUICK ANSWER;
- ASSURED QUALITY.





### ACCURL AUNIQUE SYSTEM

The movement of the blade holder on bearings provides constant and permanent support without regular lubrication. All support points are adjustable to ensure a perfect cut.

### BEST SUITED CUTTING

Vertical cut machines consist in a system which the blade holder is supported on bearing along its entire length.

This system enables the user to change the corresponding angle as a function of plate thickness, performance unavailable when using swing beam cut machines provided with fixed angle.

ACCURL shears are a certainty of dimensionally accurate cuts with no burr, no helix, no bow and no twisting in any thickness and in any type of plate. The design is based on the vertical cutting principle with angle variation and a robust structure in which the blade beam is supported on adjustable bearings along its entire length. This technology, developed over decades of experience, allows to adjust the best suited cutting angle according to the characteristics of the plate and therefore the cut is smooth and balanced throughout its length.



. EQUIPMENT

The right machine configuration is essential to achieve maximum efficiency taking into account the type of intended use.

CHOOSING IS IMPORTANT

The purpose of each option is to get the return that is higher than its cost. for this, it's important to evaluate the return that will be obtained taking into account the work that is intended to accomplish in the future.

Detailed configuration are always based on customer requirements

TYPE		PAGE
Control	Elgo P40T	● 14
	EAS S625	○ 14
	Cybelec CybTouch 8G	○ 14
	Delem DAC-360T	○ 14
Systems	Vertical cut	● 7
	Automatic variable rake angle	● 8
	Automatic cutting length	● 8
	RAE-automatic retraction	● 8
	Standby function	● 8
Front supports	1000 mm squaring arm	● -
	1000 mm single support	● -
	Front gauges FG1/FG2	○ -
	Single square support	○ -
	Support with 2 guides and scale	○ -
	Support with 1 guide and transfer balls	○ -
Rear supports	MAC 1	○ 15
	MAC 2	15
	MAC 3	16
	MAC X	○ 16
Front safety	Mechanical finger protection	● -
	Tilting finger protection	○ 17
	Safety barriers (Level IV)	○ -
Rear safety	Safety barriers (Level IV)	● -
Back gauge	BGA	● 17
	BGA-S servo-motorized	○ 17
Others	Hanging swivel control panel	● -
	Cutting lighting shadow line	● -
	LED table lighting	● -
	Hold down jacks performing progressive load with Fibroflex tip	● -
	2 operating modes: Continuous or cycle-by-cycle cut	● -
	Independent ramming (pre-selected)	● -
	Front table with ball joints	● -
	Hour counter	● -
	Front table in stainless steel	○ -
	Laser cutting line	○ 17
	FSE - Front extraction	○ 15
	RTS - Return to sender	- 16
	Angle measurer	○ -

● Standard    ○ Optionla



. CONTROLS

	ELGO		CYBELEC		DELEM
	P40 T	EAS S625	Cybtouch 8G		DAC-360
					
	1000 lines Example:50 programs with 20 lines	Unlimited programs	Unlimited programs		Unlimited programs
Lines per program	–	24	24		25
Screen	5.7" TFT	7" CRT	5.7" CRT		7" widescreen TFT
Touch Screen	●	●	●		
List of materials	●	●	●		●
Cut counter	●	●	●		●
Programmable					
Retraction	●	●	●		●
Pressure	○	○	○		○
Length	●	●	●		●
Control of...					
Pneumatic table	●	●	●		–
Angle	●	●	●		●
Blade gap	○	●	●		●





# . SUPPORTS

## REAR SHEET SUPPORT TABLE AND EXTRACTION SYSTEMS

The rear sheet support is fundamental particularly in thin material. The system ensures that the plate is aligned with the back gauge without changing the measurement. Sheet extraction systems can be added depending on the sheet support selected.



ACCURL structure is designed to ensure the best balance and less deformation during cutting.

It is a single unit welded construction and reinforced sheet-quality and certified, properly dimensioned.

### MAC1



- . Pneumatic sheet support with automatic programmed speed;
- . Swing movement from the plate extraction ramp.

### MAC3



- . Pneumatic sheet support with automatic programmed speed;
- . Vertical linear movement, perpendicular to the sheet to be cut;
- . Sheet extraction table with conveyor belts with 3 operating modes;
- . Sheet separation system.

### MAC2



- . Pneumatic sheet support with automatic programmed speed;
- . Several cylinders installed in back gauge;
- . Linear movement parallel to the sheet to be cut.

### MACX



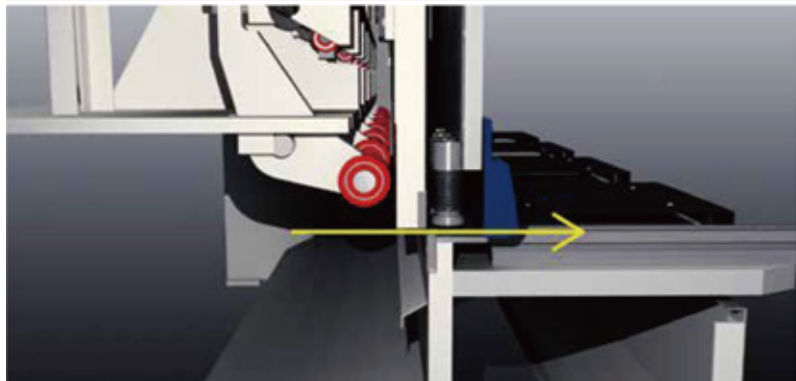
- . Pneumatic sheet support with automatic programmed speed;
- . Dual vertical and swing movement; Guarantees the full support of the sheet during the cutting process.

### FSE



- . Front sheet extraction system up to 450 mm in length;
  - . Includes one extraction drawer.
- FSE system is only available with MAC2 or without pneumatic support.

### RTS - Return to sender



The RTS system (return to sender) allows to send the cut sheet back to the operator via the entry area. This system is only available with MACX support.



## . ROBUST BACK GAUGE SYSTEM

- Fast and high accuracy
- Adjustment at any point
- Maintenance free
- Easy and secure usage
- Reliable movement
- Resistance to crash
- Better and fast cutting
- High precision and repeatability

The high speed ballscrew back gauge system movement is also supported with linear guides, which helps the back gauge achieve long life, greater sensitivity and strengthens against any collisions.

## . BACK GAUGES

### BGS

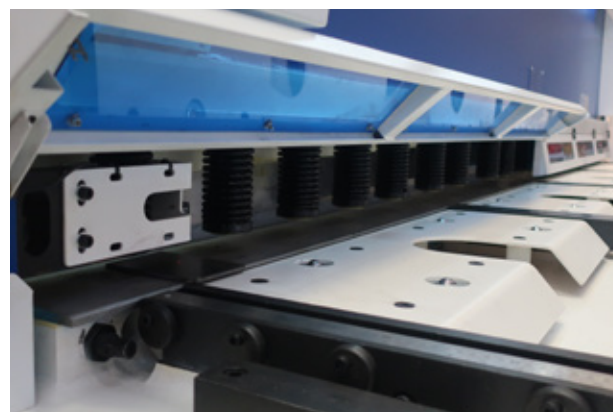
AC motor  
Ball screws  
Belt transmission  
Speed: 70 mm/s  
Accuracy:  $\pm 0,10$  mm

### BGA

Brushless servo motor  
Ball screws  
Belt transmission  
Speed: 350 mm/s  
Accuracy:  $\pm 0,05$  mm



## .OTHER OPTIONAL PARTS



TILTING FINGER PROTECTION



LASER CUTTING LINE

## TABLE SETTING

The front table can be equipped with several supports with different configurations:

- SQUARE SUPPORTS;
- FRONT GAUGES;
- TABLE IN STAINLESS STEEL;
- TABLE COVER IN SUSTAMID.



## ACCURL VARIABLE RAKE ANGLE

All ACCURL shears have variable rake angle automatically adjusted by the control depending on the thickness and type of sheet material.



NEW HYBRID ECO FUNCTION

ACCURL® promotes a friendly environmental policy, and, as such,all our equipment features the Hybrid Eco Function.

- This hybrid servo-drive system positioning accuracy at target position.
- The depending on cycle characteristics and rating, servo pump drives achieve energy savings.
- Energy Saver
- Accurate on each cycle
- Economy Proof
- Hi-Speed & Repeatability

Maximum stamina!

➤ It bends and bends and bends....



Easy parameter finding!

Quality ➤ Higher Operation Speeds ➤



Fasrer & more efficient!

Speed ➤ more than %40 Oil Save ➤

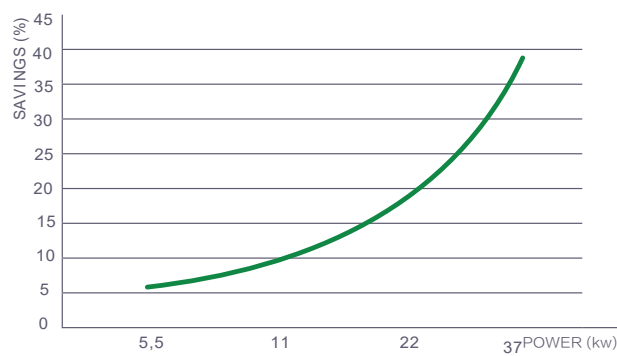


More faster-on-time!

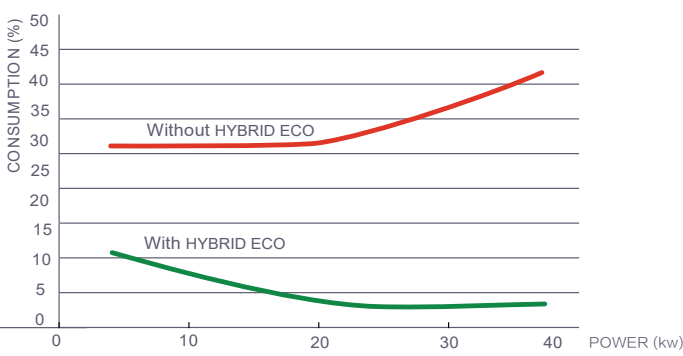
Save time and costs..... ➤



SAVINGS WITH HYBRID ECO TAKING INTO ACCOUNT THE POWER



SAVINGS WITH HYBRID ECO TAKING INTO ACCOUNT THE POWER



Standby Function ensures an effective economy of energy on an automatic basis.



BE  
PART  
OF



ACCURL GREEN  
INTEGRATED NATURE

Developing in line with sustainability and environmental concern



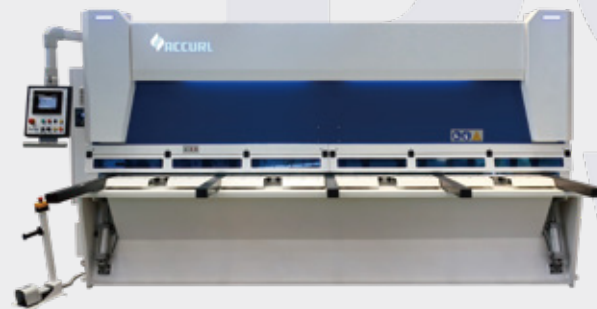
## . PRODUCT RANGE

### LASER CUTTING

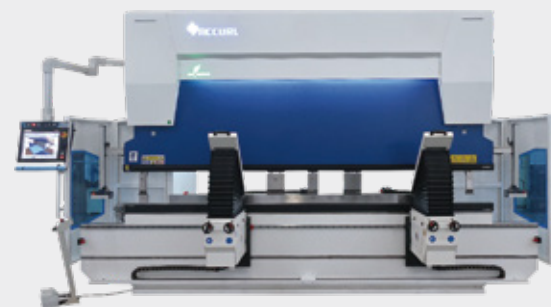
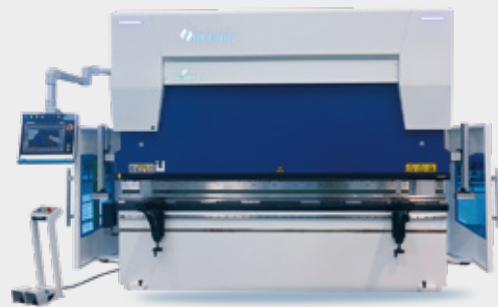
GENIUS SERIES / SMARTLINE SERIES



### GUILLOTINE



### CNC PRESS BRAKE



## FUTURE FORWARD

Embrace future challenges, and give our contribution to help industries getting prepared to the next step, is ACCURL's main commitment.

Day-to-day operations are important, but long-term business strategy will determine the ongoing and further success. Building a reliable board of principles will help to ensure that our vision for the future will be carried forward.

## KNOW-HOW

Nearly 50 years of expertise in the manufacture of press brakes and guillotines machines give us the security that is needed for future challenges.

## TRUST + RELIABILITY

High standards of quality and a team with the best training and knowledge are a major condition for our success. Our products are the result of a continued focus on improving internal processes underpinned by high quality levels, that result in the recognition of ACCURL's machines as quality guarantee equipment.

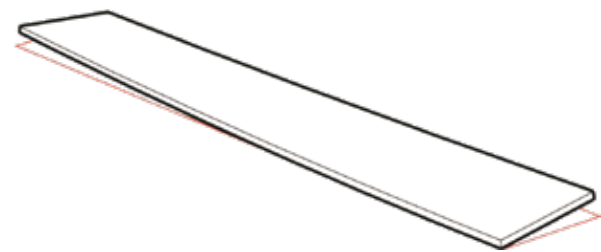
## SUSTAINABLE GROWTH

The purpose of ACCURL strategy is sustainable growth that can ensure a constant investment in innovation, which results in added value for the customer, to create good conditions for its employees and respects the environment.



SHEET METAL ANTI-TWIST SYSTEM

Anti-Twist system prevents cutting sheet material from twisting in narrow and strip cuttings by holding straight during the cutting process against to blade movements.



The unique Anti-Twist system of Accurl CNC guillotine shears consists of a series of hydraulic cylinders placed below the lower blade, which support the sheet metal against the upper blade.



The cylinders exert a counter-pressure in proportion to the thickness, the Accurl Anti-twist system contrasts the piece warping by pushing it against the upper blade,thus compensating the twist effect of the sheet.

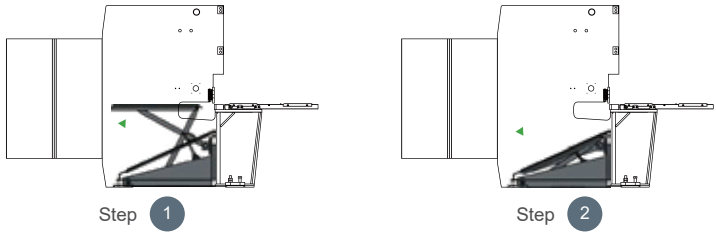
This opposing action allows us to prevent the twisting effects,which depend on the geometry and the characteristics of the material and the cutting parameters.

PNEUMATIC SHEET SUPPORT SYSTEM

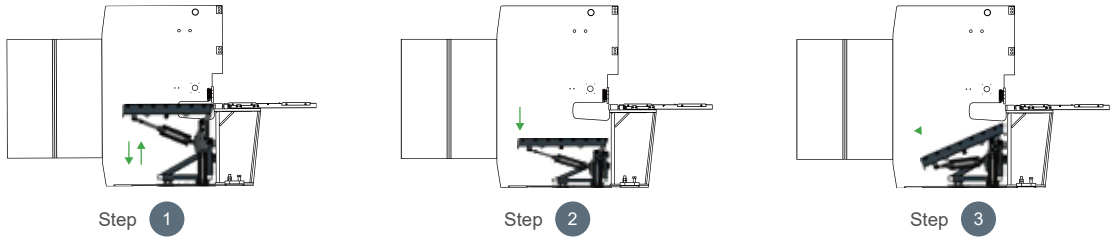
Monobloc Panel Type support system:

Avoids hanging down the wide and thin sheets via pneumatic table support and provides more precise cuts

MAC I

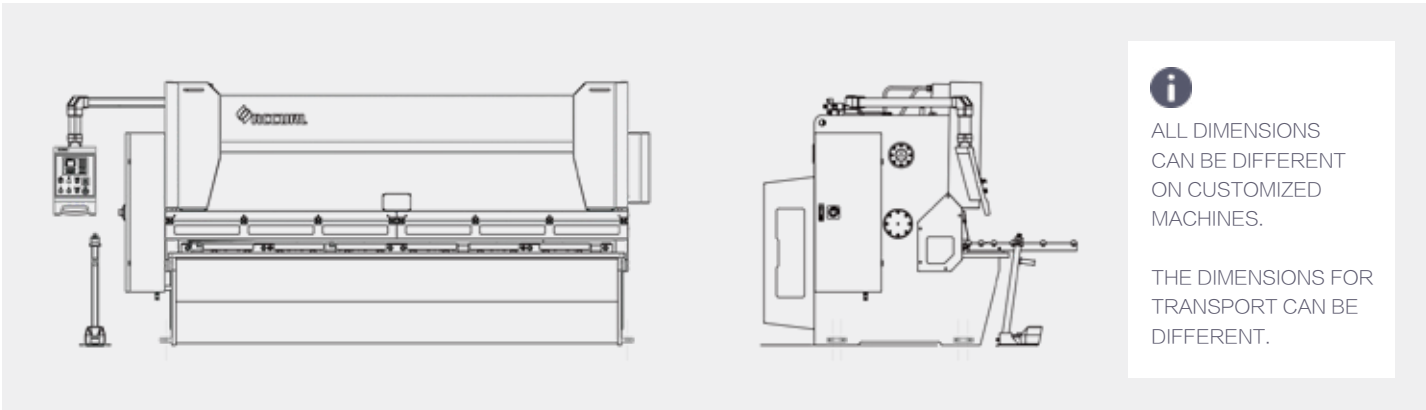


MAC X



TECHNICAL SPECIFICATIONS

	Length	Steel (45 Kgs/ mm2)	Stainless steel (70 Kgs/mm2)	Rake Angle	Angle >	Angle <	Hold Down Jacks	Back Gauge Stroke	Throat Depth	MThroat Depth	Oil Capacity	Total Length (A)	Total Height (B)	Width (C)	Heigth Under the Floor	Aprox. weight					
		Thickness			Strokes by Min	Dimensions															
		mm	mm		°	qt						qt	qt	mm	mm		kW	Lts	mm		
MASTER 2006	2050	6	4	1,5/0,7	29	40	12	1000	155	11	100	2600	1800	2500	0	4500					
MASTER 2506	2550				17	25	14				110	3100	1800	2500	0	5140					
MASTER 3006	3050				17	25	17				145	3600	1800	2500	0	6000					
MASTER 4006	4050				12	18	22				150	4600	1950	2710	0	9640					
MASTER 6006	6050				9	14	31				272	6600	2220	2630	0	23000					
MASTER 2008	2050	8	5	2/0,7	14	21	12	1000	205	11	130	2620	1950	2610	0	5750					
MASTER 2508	2550				13	20	14					3120	1950	2600	0	6500					
MASTER 3008	3050				10	16	17					3610	1950	2620	0	7760					
MASTER 4008	4050				7	12	22				150	4610	2010	2710	0	12300					
MASTER 6008	6050				6	12	31				265	15	190	6610	2480	2680	0	28700			
MASTER 2010	2050	10	7	2/1	16	24	12	1000	205	15	130	2620	1950	2610	0	6300					
MASTER 2510	2550				15	23	14					3120	1950	2620	0	7050					
MASTER 3010	3050				12	19	17					3610	1950	2620	0	8700					
MASTER 4010	4050				8	13	22		210		205	4610	2250	2520	0	13500					
MASTER 6010	6050				4	7	31		277		190	190	6620	2810	3060	0	33800				
MASTER 2013	2050	13	8	2/1	14	20	12	1000	210	18,5	210	2630	2200	2500	0	8300					
MASTER 2513	2550				13	19	14					3130	2200	2500	0	9720					
MASTER 3013	3050				10	15	17					3620	2200	2500	0	11150					
MASTER 4013	4050				8	13	22					4660	2250	2580	0	14500					
MASTER 6013	6050				4	7	31		1200		277	235	6780	3000	3370	910	49500				
MASTER 3016	3050	16	12	3/1,5	7	14	17	1000	220	22	225	3720	2300	2550	0	12360					
MASTER 4016	4050				4	8	22	1200				4700	2630	2800	0	19000					
MASTER 3020	3050	20	14	3/1,5	6	9	17	1200	215	37	430	3850	2660	2880	0	19200					
MASTER 4020	4050				4	7	22	4760				2530	2880	0	24500						
MASTER 3025	3050	25	17	3/1,5	5	7	17	1200	215	37	430	3870	2660	2890	0	21500					



ALL DIMENSIONS CAN BE DIFFERENT ON CUSTOMIZED MACHINES.

THE DIMENSIONS FOR TRANSPORT CAN BE DIFFERENT.