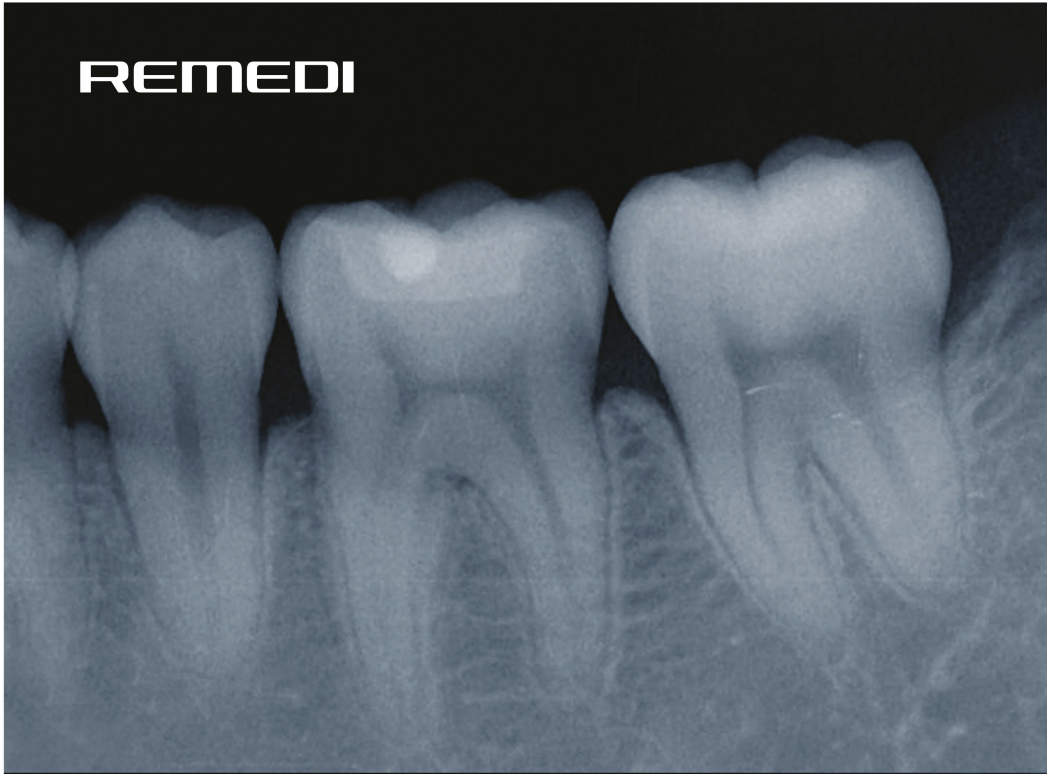


REMEMEDI



Not more heavy Not more difficult  
Not more dangerous



## REMEX-T100



High Quality  
Portable X-Ray Digital Camera

- One REMEX can easily serve 3-4 operatories, thus saving you money
- No special accommodations required
- X-ray goes to the patient's location
- Conveniently transportable anywhere: office, surgery suites, humanitarian work  
Easily take an x-ray anytime during procedures
- No cumbersome stands or cables
- Cordless, rechargeable batteries. More than 250 exposures per charge
- Lightweight, highly convenient. No motion artifacts; blur-free radiographs

Remex is the best provide diagnostic imaging.

REVOLUTION IN  
MEDICAL DEVICES



**Convenient**

Light weight, cordless, easily transportable  
 No awkward arms to manipulate; no drift  
 No need for special stands, cables, remotes  
 Hundreds of diagnostic quality images from a single battery charge

**Sharp, clear images**

Works with sensors, film, phosphor plates  
 0.4 mm focal spot produces sharp, high-resolution images

**Safety**

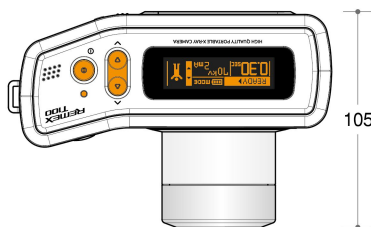
Low patient dosage  
 Internal shielding protect the operator  
 Studies show yearly operator exposure is equivalent to or less than exposure from a typical wall-mounted x-ray

# REMEX-T100

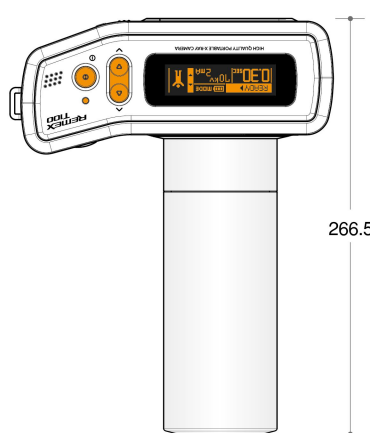
Remex is the best provide diagnostic imaging.  
 High Quality  
 Portable X-Ray Digital Camera

**DRAWING**

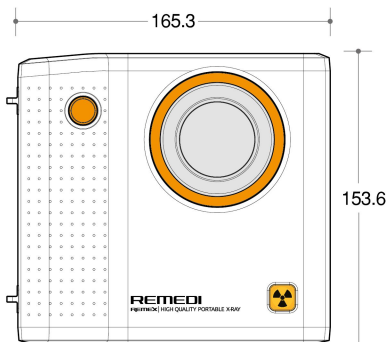
Top View  
 Install Short Cone



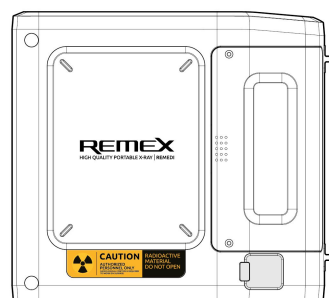
Top View  
 Install Long Cone



Front View



Rear View



**SPECIFICATION**

Constant Potential High-Voltage Generator

**Electrical**

X-ray Tube Voltage	70 kV
X-ray Tube Current	2 mA
Focal Spot Value	0.4 x 0.4 mm
Output Power	140 w
Exposure Time	0.01 ~ 1.3 sec

**Mechanical**

Anode Angle	12.5 degrees
Inherent Filtration	At least 1.5 mmAl
X-ray Coverage	Ø60 mm at SID 233 mm

Dimension

165.3 x 105~266.5 x 153.6 [WxDxH]
-----------------------------------

Weight

About 1.7 kg
--------------

Power requirement

Rechargeable Battery

DC 11.1 v, 1500mAh
--------------------

Charger

Input 100~240 VAC, 50~60Hz, 0.5A
Output 12.6Vdc, 1500mAh