

UPHOLSTERY COLOR CHART

RELAXIS- MICROFIBER LEATHER UPHOLSTERY

Age resistance and comfort.



Baikal SU1 Venice SU3 Pearl SU7 Light yellow SU11 Carnelian SU13 Bordeaux SU14



Brown U1 Champagne U2 Blue U3 Green U4 Grey U5 Cobalt Blue U6 Misty Grey U7



Orange U8 Red U9 Wine Red U10 Grass Green U11 Lemon Yellow U12 Pink U13 Black U14

NAPPA LEATHER

Fine texture, silky touch, elasticity, and breathability.



Starry Obsidian Sunrise Aurora

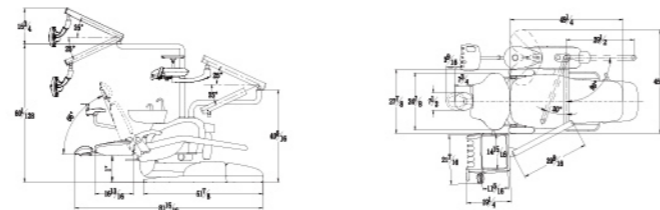
CONFIGURATION

Dental Light	Pepple II (LED/Sensor switch with composite mode)	Foot Control	FT-7 Multifunctional Foot Pedal
Patient Chair	Hydraulic Chair	Service Box	Built-in service box with all plumblings and fittings
	Relaxis Micro Fiber Upholstery		
	UP-DOWN Swivel Armrest	Dental Stool	D3 Dentist stool
Delivery System	Safety Switch	Assistant Unit	Assistant Control Panel
	Ajax System + (with 3 programmable positions)		1 Triplex
	International Style		1 HVE suction hose
	Chair Main Control Panel	1 SE suction hose	
	Master Air/Power/Water Switch	Rotatable	
Delivery System	1 Triplex	Side Box	Side Box 1300ml Water Bottle
	2 High Speed Lines with light		Side Box 1500ml Water Bottle
	1 Air Slow Speed line		Detachable Glass Spittoon

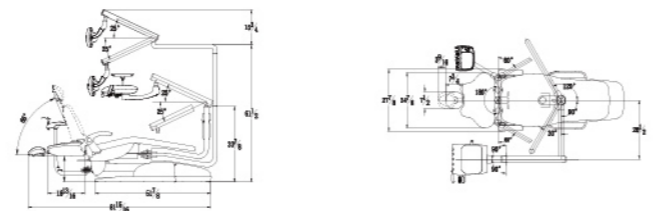
DIMISIONS

Units : mm

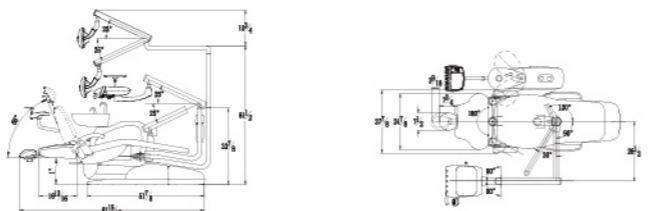
AJ16 PACKAGE 1



AJ16 PACKAGE 2



AJ16 PACKAGE 3



OPTIONS

Built-in scaler from EMS or Woodpecker	Faro LED light (made in Italy)
TKD electric motor (as slow speed)	Build-in LED curing light
22" inch monitor and arm	Assorted handpieces and couplers
N4 Assistant stool	Quick Connection For Air/Water
Continental delivery system	

www.ajaxdent.com.au



AJ16 DENTAL UNIT



Ajax Dental Supplies Pty Ltd.

T.G.A. Registered



CE 0120
190 134 95 2003
150 999 1

European
Free Sells
certificate

Headquarter ADD: Unit 23 / 21 Merrindale Drive, Croydon South VIC 3136

NSW Branch: Shop 8 / 108 Queens Road, Hurstville NSW 2220

Tel: 03 9879 3801 After sales hotline: 0478 635 358 E-mail: info@ajaxdent.com.au



AJ16: ELEVATING DENTAL EFFICIENCY WITH INNOVATIVE DESIGN

We take pride in our commitment to quality, innovation, and service excellence. Our dental chair stands as a testament to our core strengths, offering reliability, continuous innovation, and quick response to meet the needs of our valued customers.



RELIABLE QUALITY

We take quality seriously, with 90% of our dental chair parts meticulously developed and produced by Ajax, ensuring strict quality control at every stage.

CONTINUOUS INNOVATION

Our robust R&D team of 60 professionals is dedicated to staying at the forefront of industry trends and prioritizing independent research and development.

QUICK RESPONSE

We are committed to understanding your unique needs and continually improving our products and services to deliver the best possible solutions.

QUALITY SERVICE

Our commitment to quality extends to a 2-year warranty, professional technical support for clinics, and a global service network that ensures swift delivery of chair parts.

AJ16-Package 1

Introducing the latest addition to the AJAX series, the AJ16 dental chair with an advanced operating system. This ergonomic chair integrates functions to enhance patient comfort and streamline dentist efficiency. Package 1 offers increased functionality, reduced complexity, and a highly competitive price.



Left and Right Versatility

Effortlessly switch the chair's working mode with left-right compatibility.

Rotatable Side Box

The rotatable side box provides you with more space and better flexibility.

Hydraulic Chair

A reliable hydraulic system provides enhanced stability and power.

Pepple II LED Lights

Featuring an elegant design, touch-free sensor, 3-axis rotation, and a color temperature closer to natural sunlight for improved patient comfort, along with composite mode.

AJ16-Package 2

Equipped with chair, swing-mounted delivery system, operating lights and assistant instruments, without cuspidor, concise and clear, more economical for customers.



Left and Right Versatility

Effortlessly switch the chair's working mode with left-right compatibility.

Easy-to-operate delivery head

Integrated control of 15 functions, easy for dentists to operate.

Swing assistant instruments

HVE, saliva ejector and 3-way syringe, easy for positioning.

AJ16-Package 3

An integrated dental unit with a side-mounted delivery system, side box, cuspidor, dental light, and assistant instruments.



Heavy-Duty Metal Chair Frame

Stable during treatments with a remarkable 180kg load-bearing capacity.



Cast Aluminum Butterfly Backrest

Innovative design optimizes leg space for dentists and assistants.



60° horizontal rotation

AJ16 SOLID | COMFORT | DURABLE

The AJ16 dental chair embodies these qualities, offering an efficient and comfortable solution for dental professionals.



PATIENT CHAIR



One-Hand Operating Headrest

Easily adjustable with one hand during treatment.



Rotatable Armrest

Ensures easy patient access to and from the dental chair.



Relaxis- Sewn Microfiber Leather Upholstery

Offers an elegant appearance and a soft, comfortable feel.

ERGONOMIC CHAIR



SUITABLE FOR ANY HEIGHT

DENTIST UNIT



3 memory chair positions

Enhances work efficiency with a memory control system.

High-quality materials

Corrosion-resistant and maintain integrity.



Rotatable Doctor's Tray

The flexibility of the tray offers you larger operating space.



Effortless Take-and-Place Handpiece Placer

Convenient handpiece holder placement.

CONTINENTAL DELIVERY SYSTEM (OPTIONAL)



Omni-Directional Rod

Maximizes operating space.

0 Gravity Grip

Fatigue-free continuous operation.



Strong Elastic Rod

Effortless mobility.

QUICK CONNECTION FOR AIR/WATER (OPTIONAL)



ASSISTANT UNIT



Double Joint Assistant Unit

Enhances flexibility and positioning.



Ultra-Light HVE and SE Handles

Improved air tightness for stronger and more stable suction.

WATER UNIT



One-Click Disinfection
Comprehensive waterline disinfection system.



Disinfection Rack
Full coverage of waterlines.

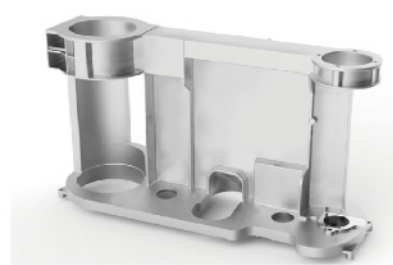


High-efficient Four-hand Operation
Doctor and assistant control panels.



Rotatable Side Box
Increased workspace.

CAST ALUMINUM FRAME



Cast Aluminum Frame
Lightweight, Rigid, and Stable.



Double Water Bottle, 1.5L&1.3L Large Water Bottle
Double Water Bottles (1.5L & 1.3L) with a thickened bottle mouth design.

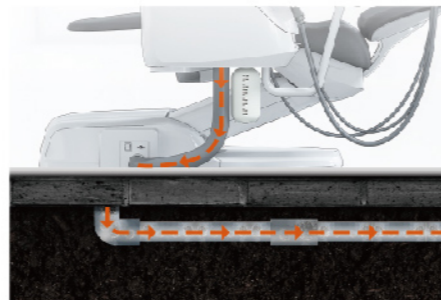


Spin-in filter
Spin-In Filter for easy operation and daily cleaning.

ROTATABLE CERAMIC SPITTOON

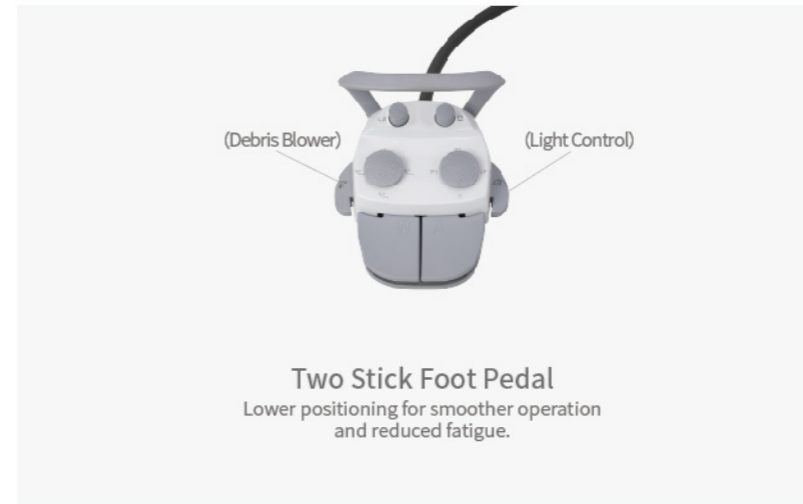


Rotatable Ceramic Spittoon
Efficient Drainage and Sterilization.



Sealed drainage
Eliminates odors, sewage back-seepage, and bacterial infection.

DUAL FOOT CONTROL



DOCTOR STOOL

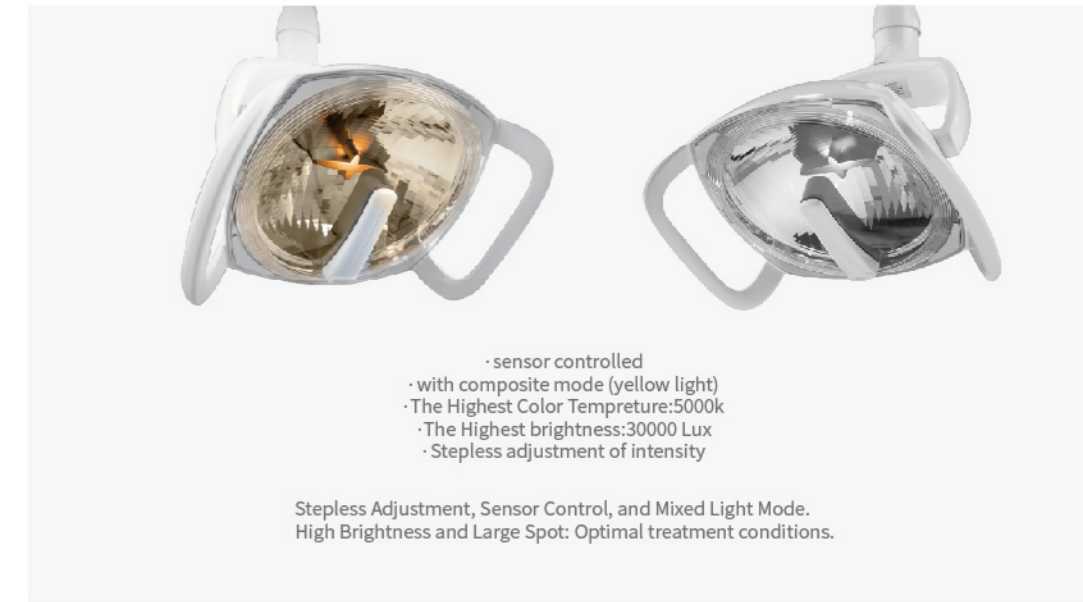


D3 Doctor Stool with 6 Functions
Offers six adjusting functions for superior comfort and mobility.



N4 Assistant Stool(Optional)

PEBBLE II LED DENTAL LIGHT



AJ16 Continental (Optional)