

# LMS112 - ANGLE IRON STANCHION MOUNT POLE



Ideal for use on conveyor gantries, walkways, stairways, and platforms the LMS112 Angle Iron Stanchion Mount Pole allows safe and easy access to angle iron stanchion mount lighting installations.

## TECHNICAL SPECIFICATIONS

**Mount:** 65 x 65 Angle Iron Handrail Stanchion Mount (Bolt to Handrail Stanchion)

**Pole:** 2.5m 32NB (42.4mm approx OD) outreach pole - 25NB (33.7mm approx OD) spigot

- ✓ Hot Dipped Gal (HDG) Finish or 316 Stainless Steel
- ✓ Structurally designed in accordance with AS4100-2020
- ✓ Wind Loads assessed in Accordance with AS/NZS1170.2-2011
- ✓ Suitable wind regions ABCD
- ✓ Recommended maximum light fitting weight up to 12kg\*

*\* Recommended maximum installed equipment weight refers to recommended limits for ease of operation, not the items structural/engineered capacity and includes any equipment and associated mounting bracket.*

## FEATURES & BENEFITS

### ONE PERSON OPERATION

Simple one person operation to lower lighting and equipment for maintenance

### EASY RELEASE

Undo link point captive bolt to swivel pole via the lower pivot attachment point to the handrail for safe and easy access

### INSTALL OPTIONS

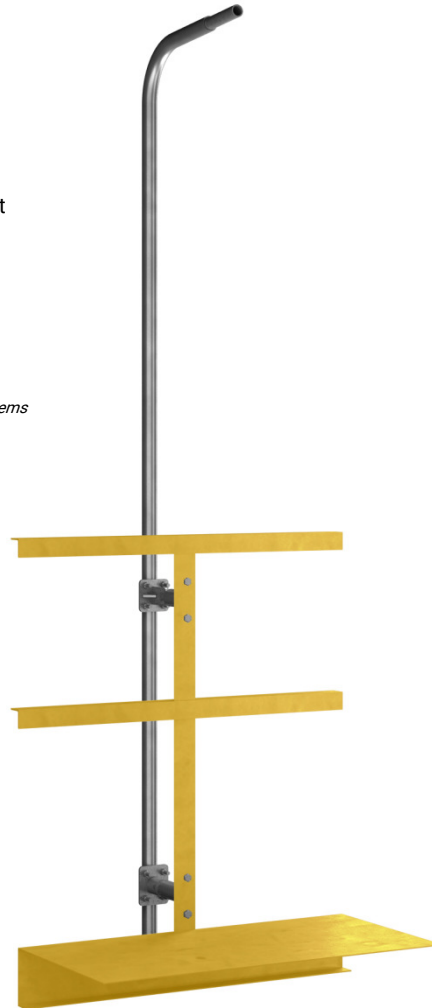
Link point design enables option to install pole to lower either left or right

### NO SPECIALISED EQUIPMENT NEEDED

Eliminates the use of specialised access equipment for lighting maintenance

### CUSTOMISABLE

Available with alternate head/outreach configurations and a wide range of custom accessories to suit your site installation requirements



**Australian Made Lighting Poles & Accessories for accessible  
Lighting Installations & Maintenance**

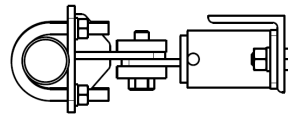
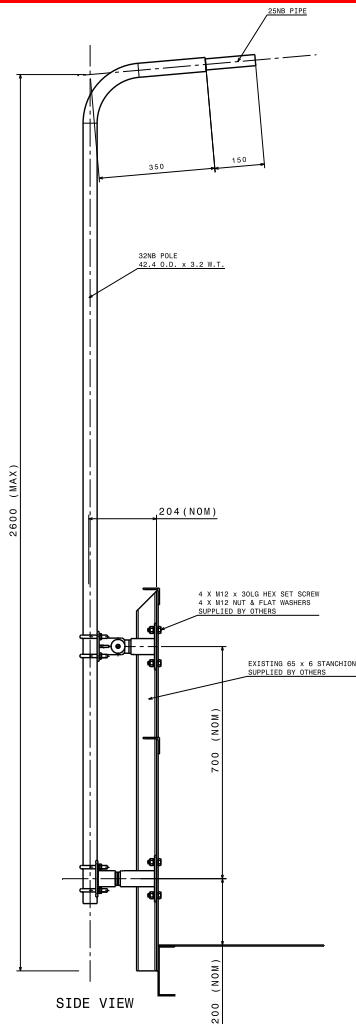
[www.lightmountingsystems.com.au](http://www.lightmountingsystems.com.au)

[sales@lmsau.com](mailto:sales@lmsau.com)

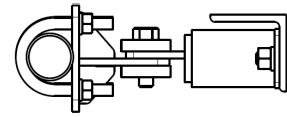
61 2 4932 9000



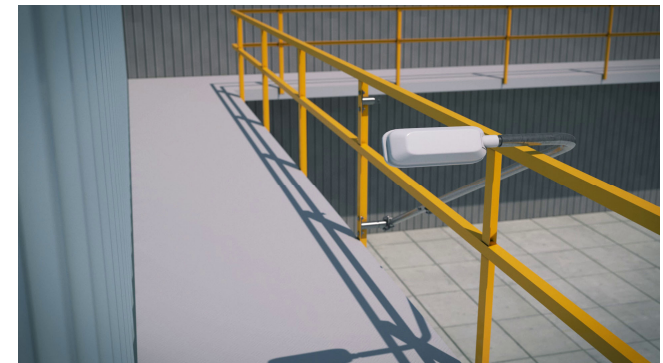
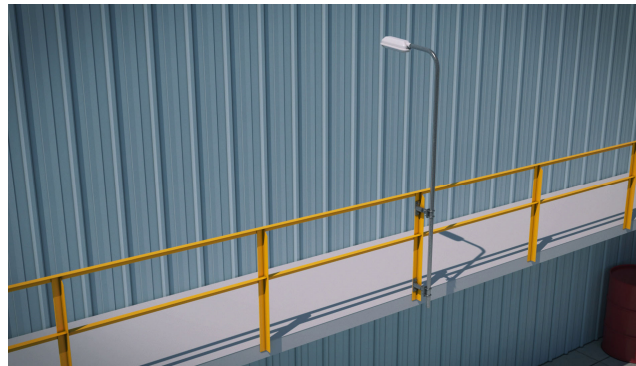
# LMS112 - ANGLE IRON STANCHION MOUNT POLE



THIS ORIENTATION ALLOWS  
POLE TO LAY TO THE RIGHT.



THIS ORIENTATION ALLOWS  
POLE TO LAY TO THE LEFT.



**Australian Made Lighting Poles & Accessories for accessible  
Lighting Installations & Maintenance**

[www.lightmountingsystems.com.au](http://www.lightmountingsystems.com.au) [sales@lmsau.com](mailto:sales@lmsau.com) 61 2 4932 9000

