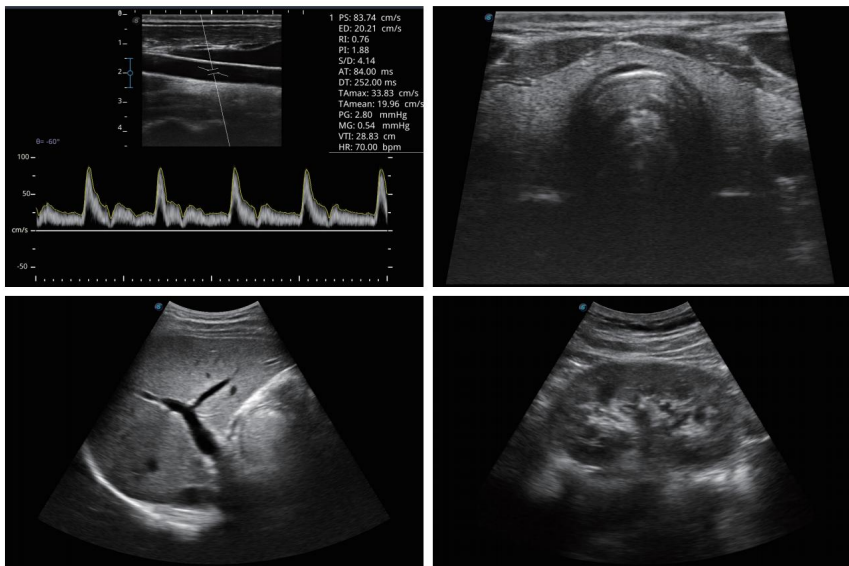


SonoScape

E1V

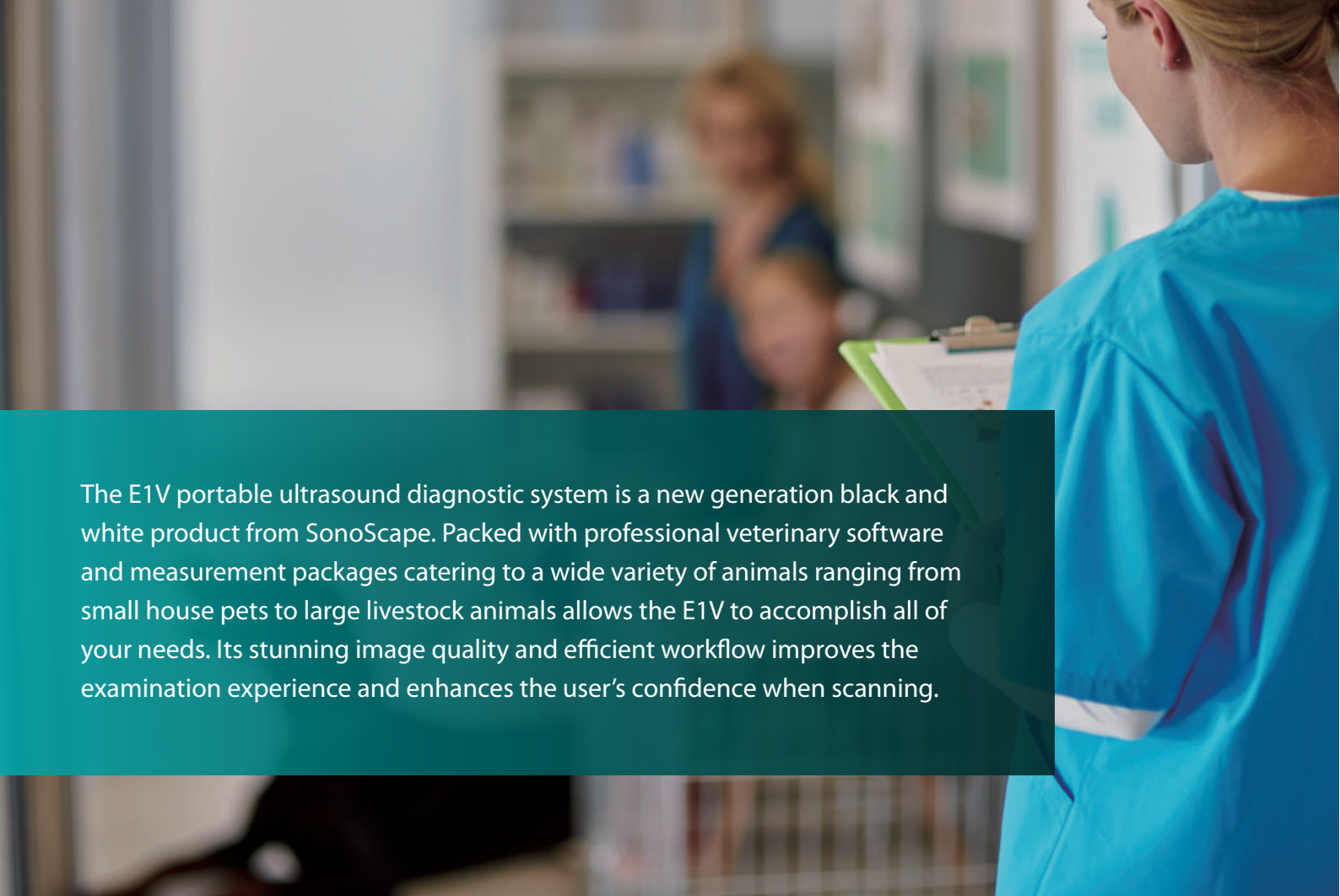
B/W Veterinary
Diagnostic Ultrasound System



SonoScape

AMS
AUSTRALIAN MEDICAL SYSTEMS
0400 771 923 or 1800 200 677
AustralianMedicalSystems.com
Sales@AustralianMedicalSystems.com

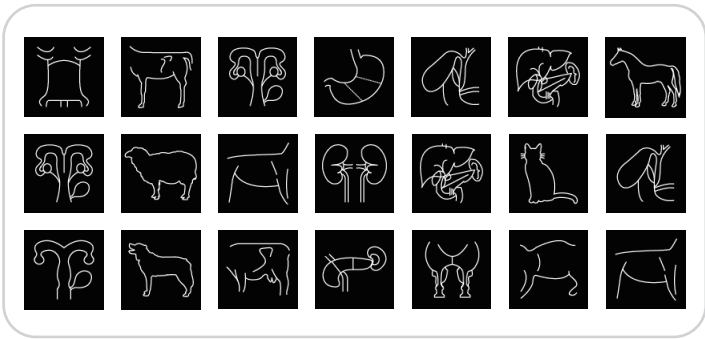
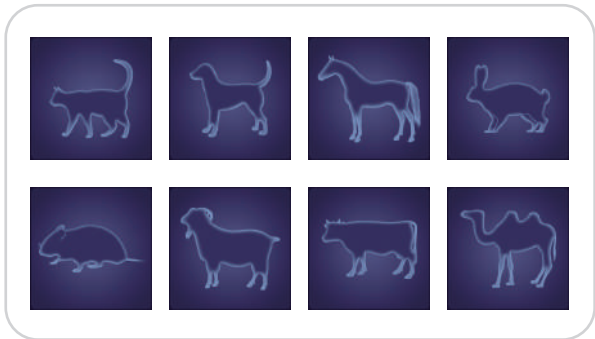
U-E1V20200312



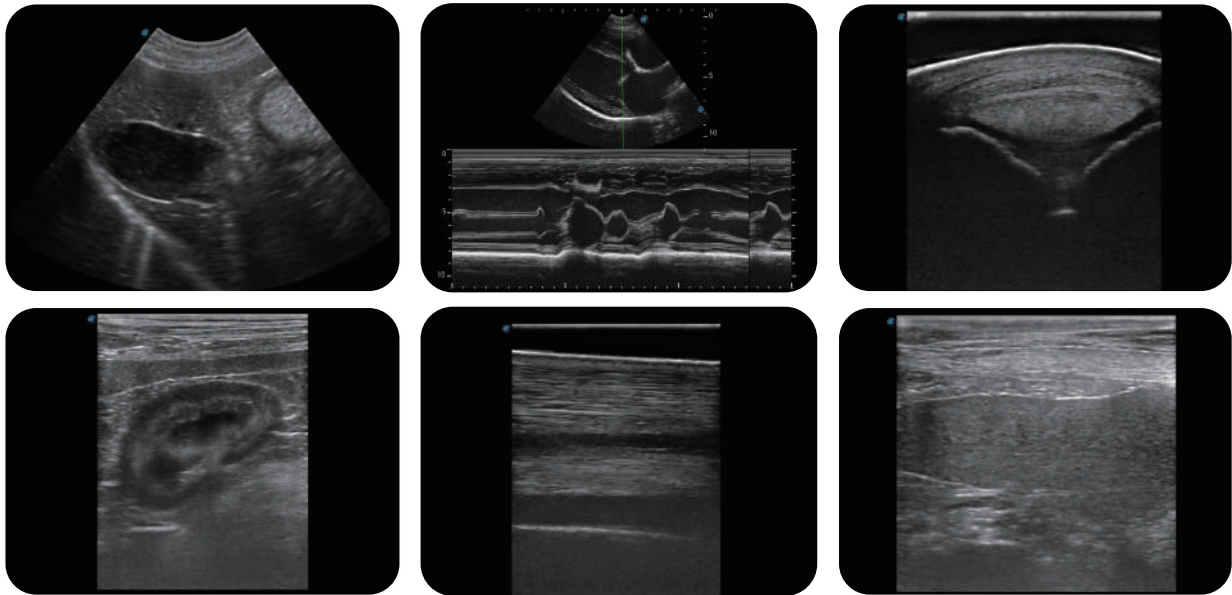
The E1V portable ultrasound diagnostic system is a new generation black and white product from SonoScape. Packed with professional veterinary software and measurement packages catering to a wide variety of animals ranging from small house pets to large livestock animals allows the E1V to accomplish all of your needs. Its stunning image quality and efficient workflow improves the examination experience and enhances the user's confidence when scanning.

Incorporating veterinary applications found in high end ultrasound machines, the E1V is able to cover many diagnostic imaging needs in one system with high-quality detailed image.

- Professional veterinary measurements and calculations
- Full library of body marks and annotations
- Veterinary information management and reporting
- User-definable graphic exam modes are applicable for different types of animals
- Variety of accessories to fit your needs in any situations



Capable B/W Ultrasound for Animal Care



Excellent Image Quality

- Dynamic multi-beam imaging
- Spatial compound imaging
- Pure inversion harmonic imaging
- Tissue specific imaging
- Wide-scan Imaging for linear transducers
- PW with Auto Trace

User Friendly Designs

- 15.6 inch high definition monitor
- Noiseless system
- Quick boot up
- Auto brightness for screen and control panel
- Water resistant keyboard cover