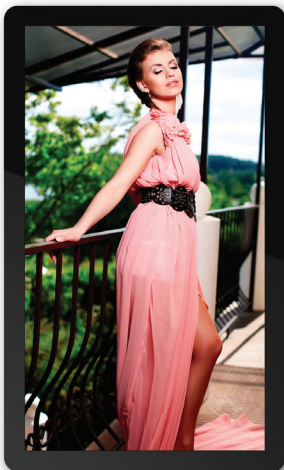




AOPEN

Bright Ideas Connected

eTILE



All-in-one Interactive Touch Device **eTILE 15M Value FanFree**

The eTILE 15M Value FanFree is a fanless 15.6" all-in-one touch device. Developed with POS in mind; this multi-touch system can be integrated in various retail settings. The eTILE is very reliable and quiet because it's fanfree and it doesn't have any moving parts.

The eTILE 15M Value FanFree includes the following features:

- + A fanless, silent all-in-one interactive touch display
- + Modular RJ50 connector for RS232 connection (voltage configurable)
- + Tamper resistant because of cable management, hidden keypad and port cover
- + IP65 grade dust & waterproof front panel

eTILE 15M Value FanFree



Model name		WT15M-FB
Feature		Ultra-thin, tamper resistant all-in-one touch system
Dimension	W x H x D (mm)	380.5x230x236.45 mm
	W x H x D (inch)	14.98x9.05x1.38 inch
Weight (Kg/Pound)		3.7 kg / 7.72 lbs (N.W.)
SoC	Type	Intel® BayTrail CPU N2930
Memory	Channels	Dual Channel
	Type	DDR3 2GB x 2 Low voltage
	DDR	1333
	Max Memory	8G
Graphics	Embedded	Intel® HD Graphics series Depending on CPU
Audio	Type	HDMI 1.4a Analog 2 channels I/O
LAN		Single Intel Gigabit Ethernet Realtek RTL8111G 10/100/1000 Mbps
Microphone		Built-in internal Mono MIC
Mass Storage		Supports 2.5" SATA III HDD/SSD (HDD enclosure not included) and mSATA Default 32G mSATA SSD
Touch Panel		PCT Multi Touch Surface (10 point touch) Pencil Hardness = 7H per ASTM D3363 Pen Hitting: more than 100,000,000 times (loading 180g)

Panel Specs	Resolution	15,6" (1920 x 1080; 16:9)
	Brightness	400 nits
	Panel Type	VA
	View Angle	Horizontal: 85/85 Vertical: 85/85
	Back Light Type	E-LED
Side Panel I/O	DC Jack	19V x 1
	HDMI Out Port	1.4a HDMI x 1
	USB 2.0 Port	x 4
	RJ45 LAN Jack	x 1
	RS232 Serial port (RJ-50)	x 4
	Audio Line-Out	x 1
	Line in	x 1
	Antenna Hole	x 2
Adapter		90W (19V, 4.74A) AC Adapter
Watchdog Timer		1 sec~255 sec
IP Grade		Front panel IP65 dust- & waterproof
Security		Hidden Keypad Secure cable and port cover Concealed on/off controls
Accessories		Wall Mount Kit, internal Wifi Antenna, Powercord, Other accessories available on request

Environment		
Operating Temperature		0 ~ 40°C (32 ~ 104°F)
MTBF		50,000 hours
Storage Conditions		-20 ~ 60°C (-4~140°F) 90% RH (40°C non condensing)
Vibrations	Operating Vibration	1Grms, random, 10~500Hz, X, Y, Z, 0.5Hr/Axis
	Operating Shock	8G, half sine, 11ms duration, 3Axes, 6Direction

Supports:



AOPEN

Bright Ideas Connected

The specifications depicted may be subject to change without prior notice. All trademarks are copyright of their respective owners. © AOPEN Inc.