

CROWN

# SC 6000 SERIES

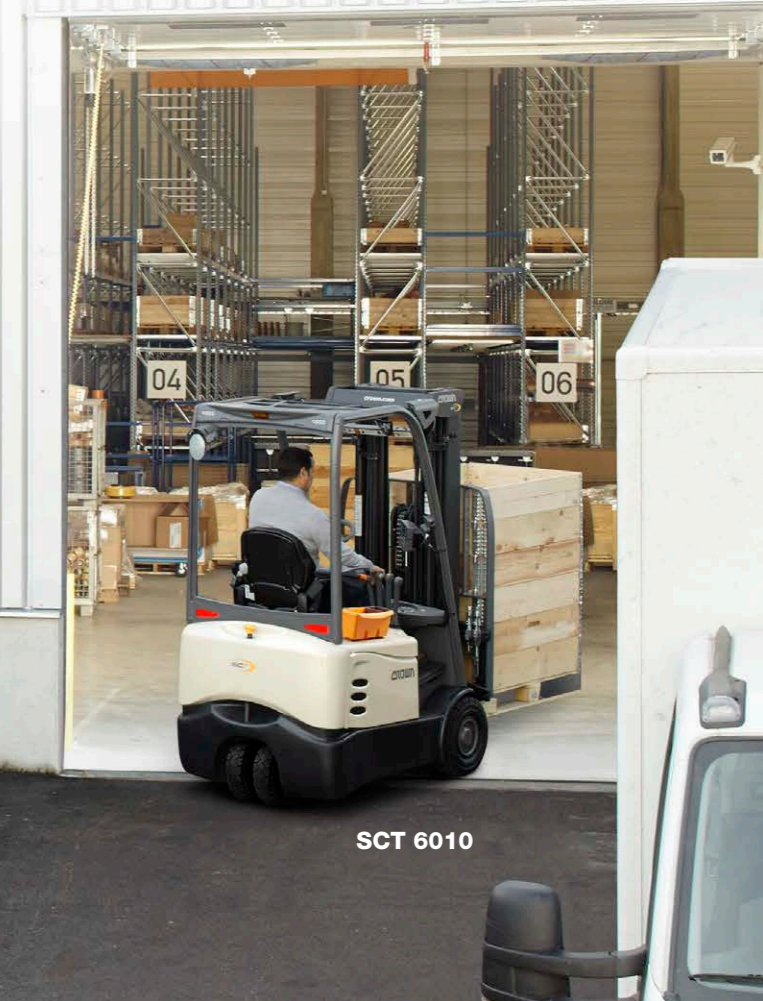


# The concept is simple. Getting it right is the hard part.

Counterbalance trucks rely on a simple balance concept. When it's done right, operators are more confident, risks are reduced and work flows smoother. The SC 6000 Series incorporates more than just basic physics however. Attention to detail, advanced engineering, a solid foundation and task-focused ergonomics — that's the ideal balance you find on the Crown SC 6000 Series.

Crown gives you more value and versatility in a multipurpose truck. Tailor the SC 6000 Series to meet your needs. You can choose from 3-wheel and 4-wheel models with capacities from 1.3 to 2.0 tons. Each gives you a distinct

edge on stability and manoeuvrability. Optimise further with options for controls, lights, accessories and more.



SCT 6010

SCF 6040  
Hard Cabin

## SCF 6000 Four Wheel Counterbalance

- **Capacity**  
1.6, 1.8 and 2.0 ton
- **Masts**  
Simplex, Duplex, Triplex and Quad
- **Max. Lift Height**  
8075 mm
- **Battery**  
550–750 Ah



## SCT 6000 Three Wheel Counterbalance

- **Capacity**  
1.3, 1.6, 1.8 and 2.0 ton
- **Masts**  
Simplex, Duplex, Triplex and Quad
- **Max. Lift Height**  
7490 mm
- **Battery**  
330–750 Ah



# Comfort and control. A personal approach.

Life can be challenging for operators. They're on and off the truck all day, inside and outside, in all kinds of weather. Rough ground, tight spaces, poor lighting and traffic make it tougher. They need a truck that makes the job easier, and the SC 6000 Series delivers. Operators have open sight lines, more headroom and simplified ingress and egress. Cabin, control and accessory options can be tailored to fit the task.

## Cabin Options



Weather impacts performance. Take a personal approach and get more done with Crown's cabin options. The partial cabin includes a windshield with wiper, a roof with reading light and rear panel with wiper. Add soft doors with embedded magnets when a simplified enclosure suffices. For the ultimate in all-weather protection, the hard cabin option features clear view doors, 2-way sliding windows and heater option.



Partial Cabin



Soft Cabin



Hard Cabin



Shown with hard cabin installed.

## Visibility Window

With visibility out the front, out the sides or to the rear, operators gain a clear advantage on the SC 6000 Series. And it's the same with or without a cabin.

## D4 Armrest

Features easy, one-handed adjustment of up/down and fore/aft positioning. For use with manual levers or with one of four integrated hydraulic control options.



### Fingertip

Intuitive control of hydraulic and truck functions with minimised hand movement.



### Mini-Lever

Variable spaced controls allow for precision movement with a pinch grip.



### Dual-Lever

Smooth blending of hydraulic functions with ample spacing of controls for glove use.



### Combination Levers

Well-spaced dual-lever for main operation and mini-levers for finer control of third and fourth functions.



## Traction Control Options

Single pedal traction control with brake (left) or optional dual pedal traction control with brake (right) are available to match operator preference.



# Robustness. Of course. It's a Crown.

The Crown brand is all wrapped up in robustness. You can see it in the smallest details because we engineer our lift trucks for exceptional reliability. On the SC 6000 Series, you see robustness from the solid box frame to the drive units to the rigid I-beam mast and everything in between. You get steel where it counts and engineering focused on the long term.



## Mast/Integrated Side Shift

Stable loads improve operator confidence. Crown uses nested I-beam masts to minimize longitudinal, lateral and torsional flexibility. Reliability and durability are also improved with Crown's integrated side shift featuring a carriage that shields the cylinders.



## H Class Drive Motors

Heat is one of the biggest threats to motors and the ability to keep a truck running when loads are heavy and ambient temperatures are up. While others provide thermal-cutback settings to protect from meltdown, Crown designs and builds motors to a high thermal rating to handle the heat.



## Chassis Construction

It's a tough, busy world where collisions sometimes happen. You need a frame that can stand up to this harsh reality. Crown's fully enclosed box frame and symmetric design helps protect against frame distortion caused by impacts. It's a solid base that keeps your truck aligned for longer useful life.



## 3-Wheel and 4-Wheel Steer Axles

Steer axles take a beating over rough surfaces and dock boards. To withstand these stresses, the SC 6000 Series steer axles feature massive steel/cast-iron construction and heavy-duty tapered roller bearings.

# Safety. Work from a position of strength.

Ramps, uneven surfaces, racking, product variations and traffic present an ever-changing, risk-filled environment for operators and equipment. That's why Crown created the Intrinsic Stability System. It's a proactive approach to stability that provides more control.

The intelligent system uses integrated sensors and controllers to constantly monitor and control key functions and movements. It leverages the truck's inherent engineered stability to optimise safety and performance. Our mast staging and cushioning system also helps operators keep control of the moving load at all times.



**Travel and Cornering Speed Control**  
The on-board intelligence assists the operator with control based on load weight, lift height, steer angle and truck speed.

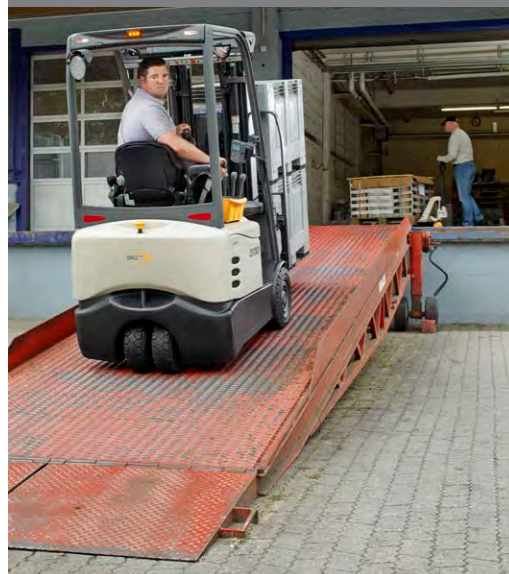


## Lighting Options

Long-life LED lights make a dramatic difference in productivity and performance. On the SC 6000 Series, you have a range of lighting options for both inside and outside applications. They're designed to help operators see more clearly, and to make the truck more visible to others.

### Ramp Speed Control

Operators maintain constant speed on ramps with the assistance of the system's intelligent control.



### Tilt Speed Control

System-controlled tilt speeds reduce the risk of a truck tip over.

### 2-Degree Lift Zone

With forks above free lift height and with a load, forward tilt is limited to 2 degrees.

### FREE LIFT HEIGHT

### Hydraulic Speed Control

Tilt/accessory speeds are limited automatically based on fork height and load weight.



### Full Tilt and Lift Speed Zone

Below free lift height, operators have a full range of forward tilt and full tilt speed.

### Weight Matters

The SC 6000 Series puts more mass where it counts with heavy use of steel, plus a stability-enhancing counterweight that exceeds required standards.



#### LED Lights

- Tail light
- Backup light

#### Interior LED Dome Light

#### LED Flashing Light

#### LED Travel Package Lights

- Tail light
- Brake light
- Turn indicators
- Reflectors

#### Rear LED Work Light (optional halogen light)

#### Front LED Work Lights (optional halogen light)

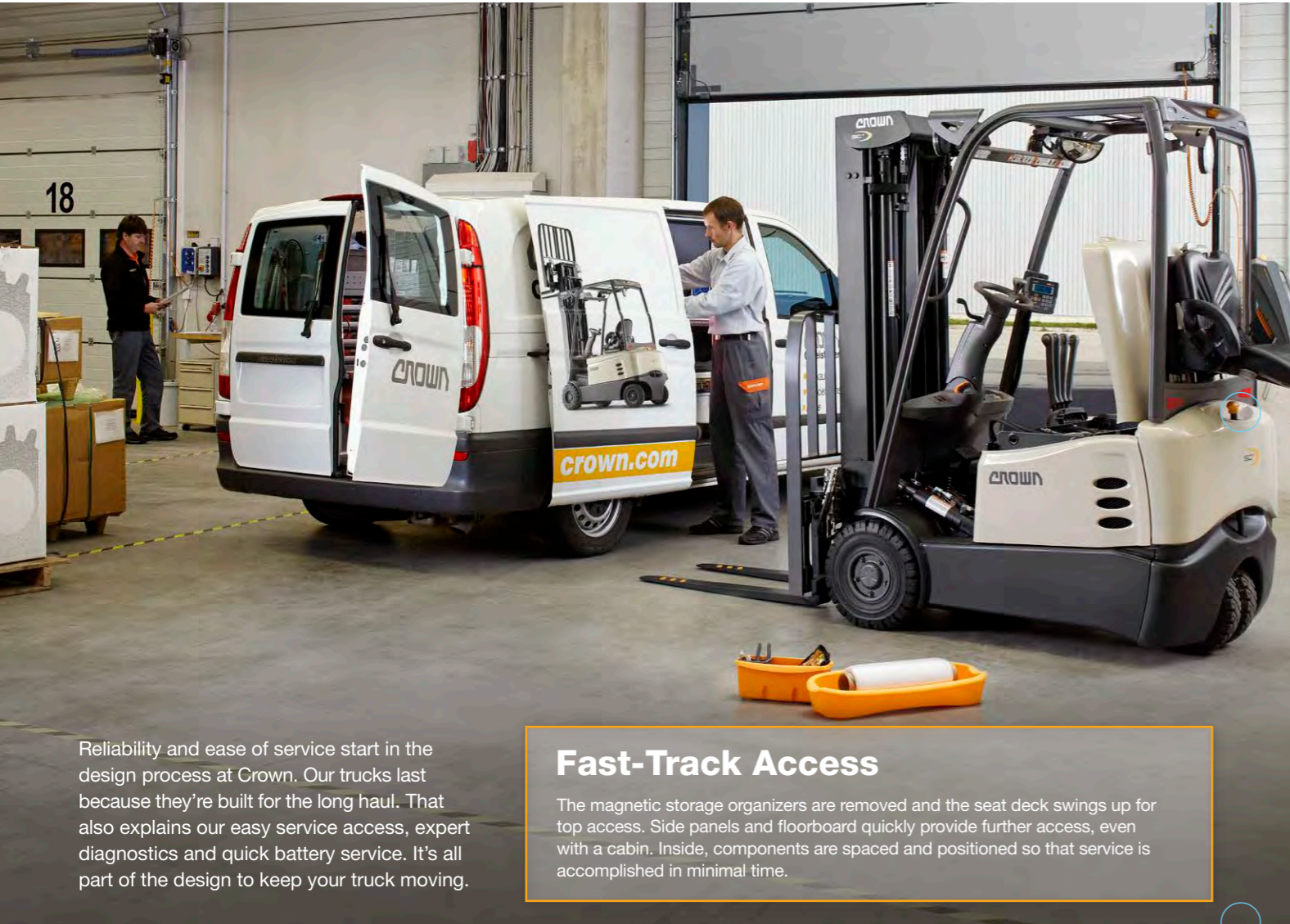


#### LED Travel Package Lights

- High/Low beam
- Turn indicators



# Serviceability. Benefits of a long-running outlook.



## Fast-Track Access

The magnetic storage organizers are removed and the seat deck swings up for top access. Side panels and floorboard quickly provide further access, even with a cabin. Inside, components are spaced and positioned so that service is accomplished in minimal time.

Reliability and ease of service start in the design process at Crown. Our trucks last because they're built for the long haul. That also explains our easy service access, expert diagnostics and quick battery service. It's all part of the design to keep your truck moving.

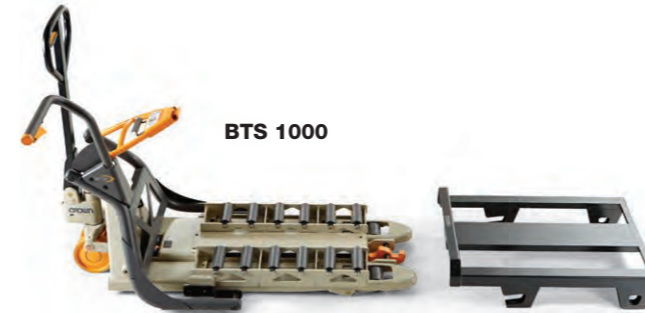
## Access 1 2 3®

Crown's Access 1 2 3 technology gives you instant, on-board diagnostics. There's no hassle of hooking up a handset or laptop. The easy-to-understand display communicates event codes, while a built-in multimeter can be used to pinpoint the origin of faults. Repairs are faster, too, with no need to swap out components in trial-and-error testing. Service engineers simply drive suspect components and test their functionality through the display.



## Battery Service Solved

Crown offers top battery access, plus lift-out and side-out options. Our unique battery transfer system (BTS 1000) allows one person to quickly change batteries. The results are minimal downtime, fewer handling restrictions and less expense.



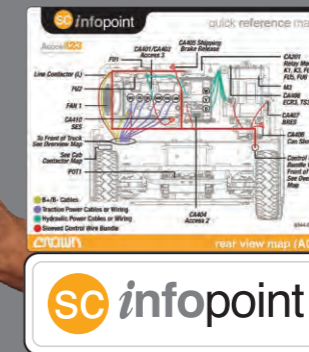
## More uptime for your money

Crown's integrated approach combines truck feedback with diagnostics, Crown-made parts and dedicated service teams to provide more uptime and a low total cost of ownership.



**InfoLink**

InfoLink is a wireless operator and fleet management solution that puts the power of accurate, up-to-date business metrics right at your fingertips.



**SC infopoint**

Crown's InfoPoint on-truck component maps provide service engineers with vital information to quickly, accurately and easily resolve issues without additional wiring diagrams and schematics.



**INTEGRITY Service SYSTEM**

Crown's Integrity Service and Integrity Parts solutions ensure long-term truck performance by matching trained service engineers with Crown-made parts for long-lasting performance. That's a major difference with Crown.

Get the value and versatility of the multi-purpose SC 6000 Series.

Visit [crown.com](http://crown.com)  
See the SC 6000 Series in action.



**Crown Gabelstapler GmbH & Co. KG**  
Philipp-Hauck-Str. 12  
85622 Feldkirchen, Germany  
**Tel** +49(0)89-93002-0  
**Fax** +49(0)89-93002-133  
**[www.crown.com](http://www.crown.com)**

Because Crown is continually improving its products, specifications are subject to change without notice.

Crown, the Crown logo, the colour beige, the Momentum symbol, Access 123, InfoLink, InfoPoint, Integrity Service System, and the ecologic logo are trademarks of Crown Equipment Corporation in the United States and other countries.

Copyright 2020 Crown Equipment Corporation  
SC6000 BROCH GB 01/20, 10 – M01432-006-02  
Printed in Germany

**ecologic™**

Clean Environment. Smart Business.

Printed on elemental chlorine free and sustainably forested paper.