



FOR NEW EQUIPMENT SALES, CALL
800.958.2555
TO SPEAK WITH AN ALTEC REPRESENTATIVE
or visit us online at altec.com

 **Altec**
ARTICULATING TELESCOPIC
AERIAL DEVICE

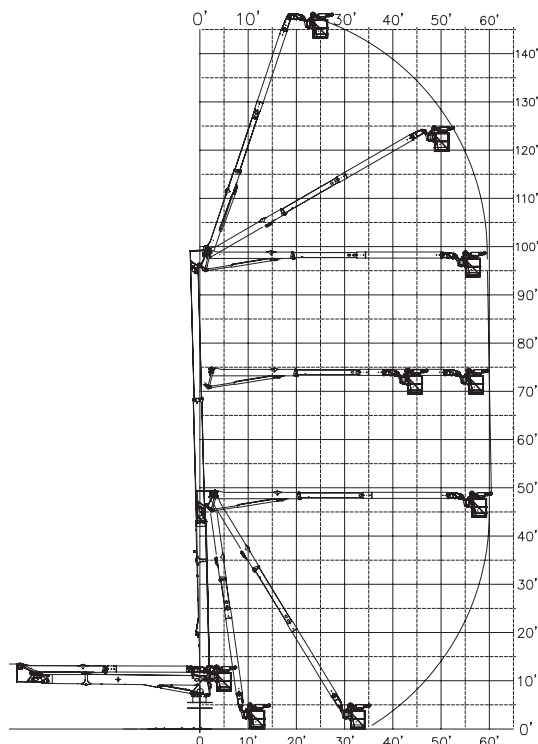
FEATURES

- Articulating and Telescoping Lower and Upper Booms
- 1600 lbs (953 kg) Total Boom-tip Capacity in Any Boom Position
- Aluminum Platform
 - » 1600 lbs (726 kg) 36 x 96 x 42 in
 - » End Mounted Rotating Platform
- Material Handling System
 - » Up to 1000 lbs (454 kg) Capacity in Any Boom Position
 - » Hydraulically Extendible and Articulating Jib
 - » 180° Manually Rotating Jib/Winch Assembly
- Automatic Hydraulic Platform Leveling
- Individual single function controls with safety interlocks
- Category A Upgradeable - Standard Configuration Includes:
 - » Lower Test Electrode / Conductive Shield
 - » Pre-wired for Leakage Monitor
- Two Hydraulic Tool Circuits at Boom Tip
- Outriggers
 - » Rear - Swing Out and Down
 - » Front - Single Stage Out and Down
- Outrigger Boom Interlock System
- Secondary Stowage System
- Outrigger Motion Alarm
- Back-Up Alarm

OPTIONS

- Corona Ring
- Current Leakage Monitor
- Hydraulic Intensifier at Platform
- Fall Protection System
- Outrigger Pads
- Wheel Chocks

REACH DIAGRAM



For more complete information on Altec products and services, visit us on the web at www.altec.com. Material and specifications are subject to change without notice. Featured units in photos may include optional features. Please contact an Altec representative for all available options. Altec® and the Altec logo are registered trademarks of Altec Inc. in the United States and various other countries and may not be used without permission. © 2017 Altec Inc. All Rights Reserved. AIOAH150-0117-v2

SPECIFICATIONS	Ground to Bottom of Platform	145.0 ft (44.2 m)
	Working Height	150.0 ft (45.7 m)
	Maximum Reach From Centerline	60.3 ft (18.4 m)
	At Working Height	70.2 ft (21.4 m)
	Platform Capacity (Aluminum)	1600 lb (726 kg)
	Maximum Jib Capacity	1000 lb (454 kg)
	Maximum Combined Capacity, Platform & Jib	1600 lb (726 kg)
	Lower Boom Articulation	0 to 87.5°
	Lower Boom Telescopic Extension	49.8 ft (15.2 m)
	Upper Boom Articulation	0 to 160°
	Upper Boom Telescopic Extension	12.7 ft (3.9 m)
	Stowed Travel Height	13.4 ft (4.1 m)
	Upper Boom Isolation (Minimum)	14.2 ft (4.3 m)
	Max. Boom Dielectric Rating	500 kV
	Rotation	Continuous

Recommended safety equipment, available through Altec Supply, include platform liners, fall protection systems, and outrigger pads.

*Based on a chassis frame height of 40 inches (1016 mm) in compliance with ANSI A92.2-2015 Paragraph 6.2.2.3

HIGH CAPACITY PLATFORM AND JIB MAXIMIZES PRODUCTIVITY



OPTIMIZED BOOM DESIGN COMPLIES WITH FEDERAL BRIDGE FORMULA ON FIVE AXLE CHASSIS



UNIQUE OUTRIGGER CONFIGURATION MAXIMIZES STABILITY WITH REDUCED WEIGHT



INDIVIDUAL, SINGLE FUNCTION CONTROLLERS ALLOW INTUITIVE, CONFIDENT OPERATION AT HEIGHT

