



# Aluminum Chips Baler

AMB-H1075  
PRODUCT DETAILS



南通恩派特机械有限公司

- Product name, model no., usage, appearance, overview
- Technical Information
- Equipment Structure
- Hydraulic system
- Electrical System
- Advantages

- **Product Name:** Automatic Aluminum Chips baler
- **Model No.:** AMB-H1075
- **Usage:** to press aluminum chips into good bales
- **Appearance:** frame structure, oil cylinder (main cylinder, side cylinder, door cylinder) , hopper, hydraulic system, electrical system, conveyor(optional).
- **Overview:** Automatic metal baler with hopper, 100T main press force, bale size: 300x300mm



No.	Parameter	Unit
1	Main Press Force	100t
2	Bale Size	300x300 mm
4	Motor	30 kw
5	Pump	250 ml/r
6	Cycle time	Approx. 90S
7	Machine Size	3460x1630x1450mm
8	Chamber room Size	1000x750mm
9	Machine Weight	approx 6t

Yellow Hopper

Push material  
Cylinder

Side main Cylinder

Magnetic conveyor

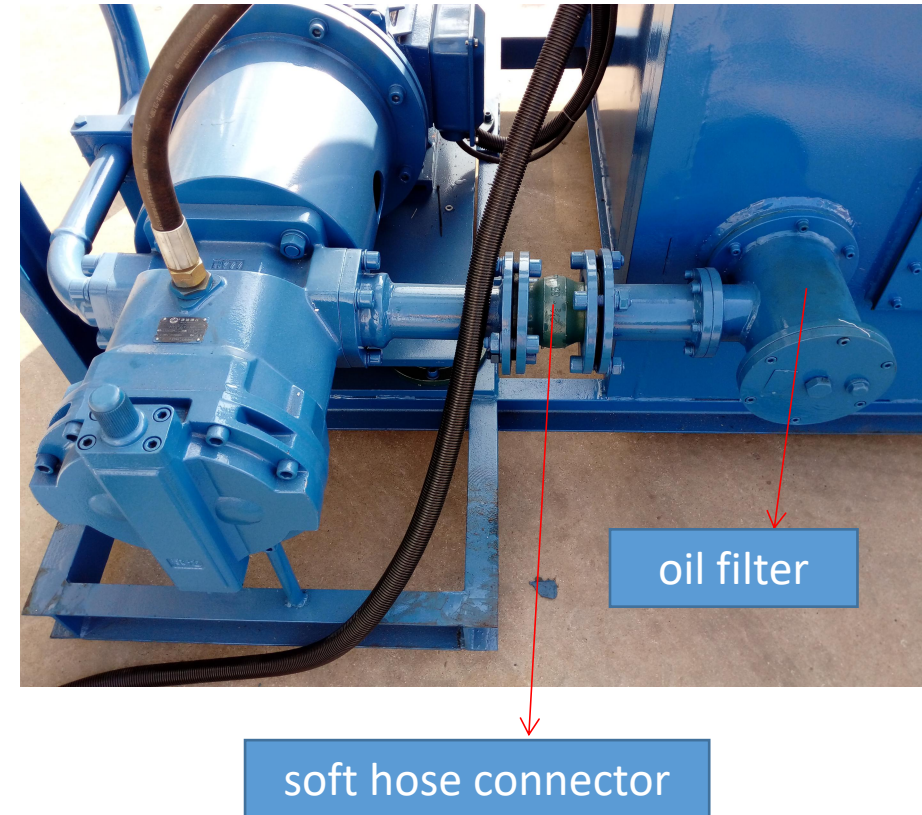
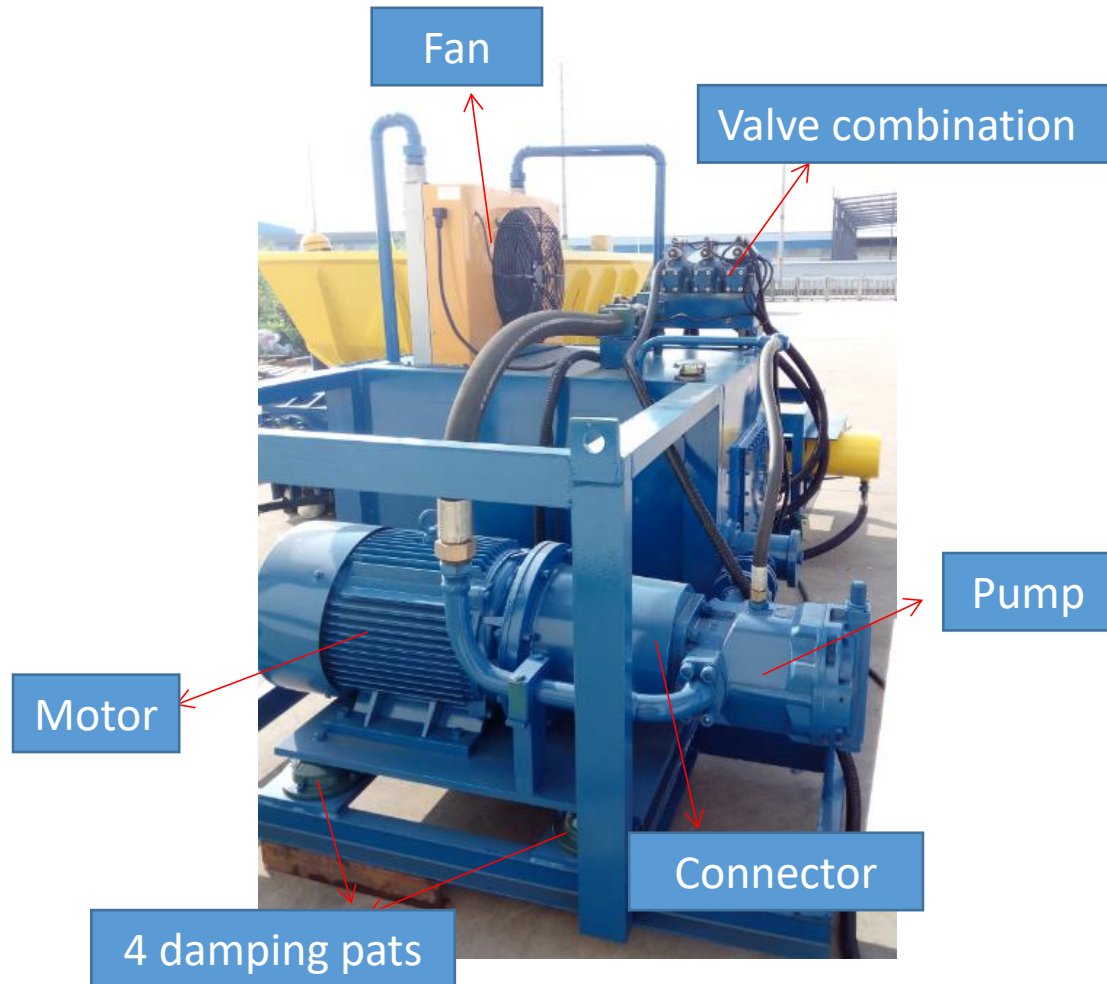


Hydraulic System

Door Cylinder

Automatic Metal Baler (Hopper Style )

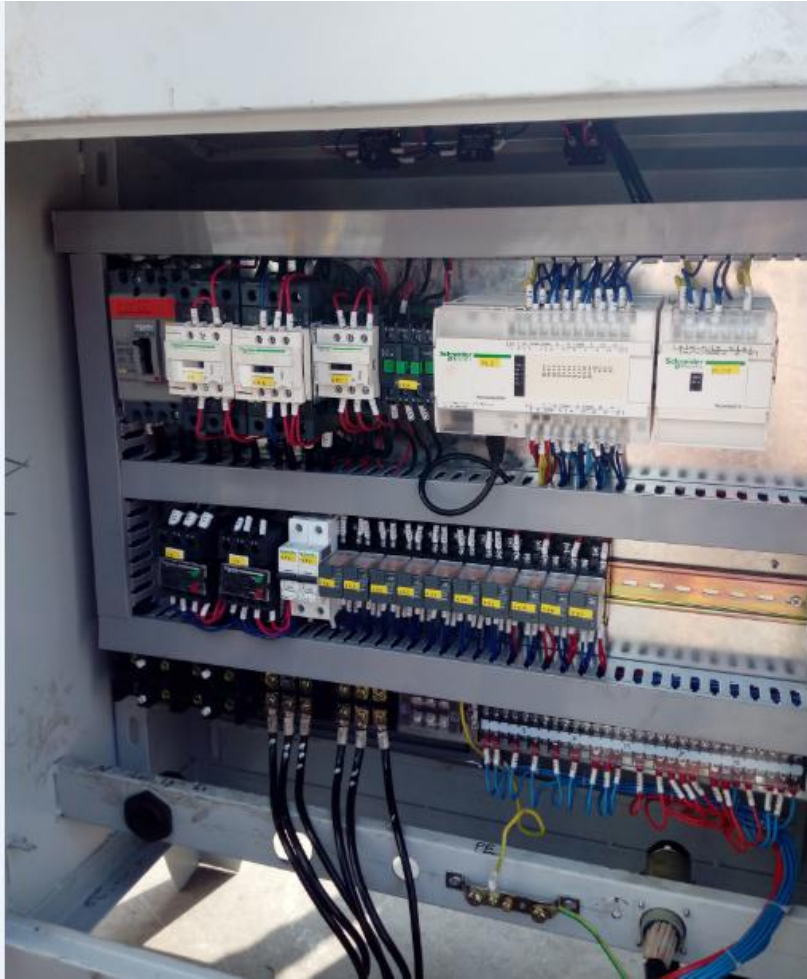




- The hydraulic system adopts the frame structure, oil pump is arranged on the side of the tank, the hydraulic oil in the tank is directly extracted, the hydraulic system is quickly supplied to the hydraulic valve group system to ensure the rapid advance of the hydraulic cylinder to do the piston movement;
- Equipped with oil filter;
- Using soft hose to connect the oil filter and the oil pump. When the machine is working, it can be shocked to protect the pump and motor.
- The motor base is equipped with four damping pads.

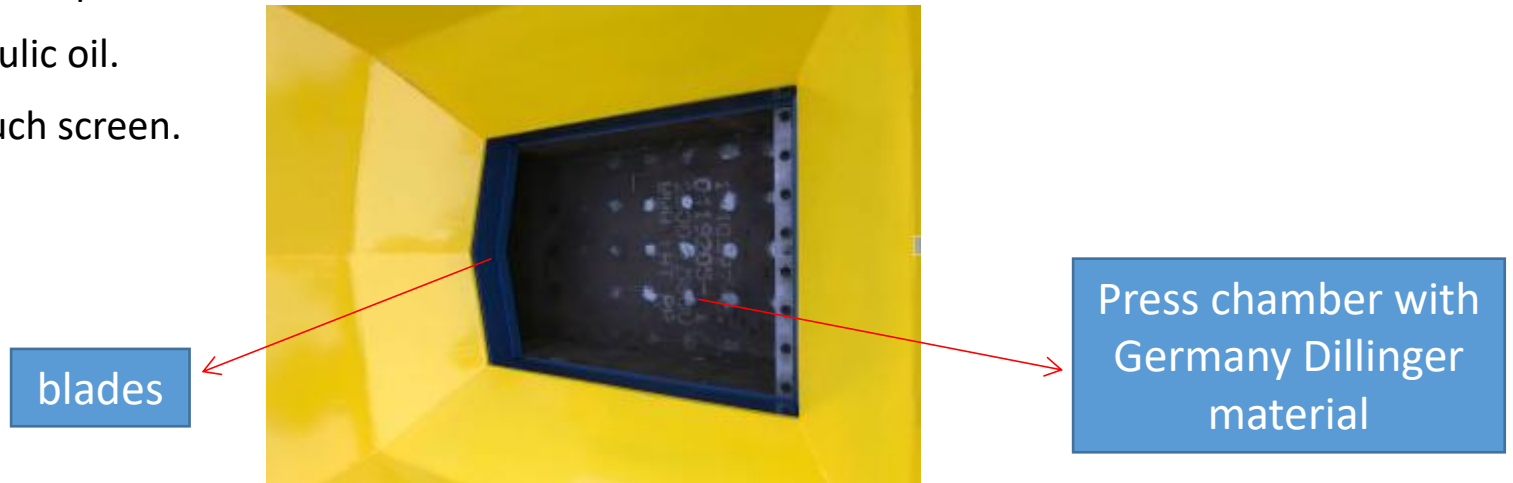






Schneider Electrical System

- Automatic mode: Use the key to start the power, press the reset button, and then manual or conveyor feeding materials, then press automatic operation button, till bale is out;
- Internal press chamber and master cylinder head are with Germany Dillinger material, high strength, high wear resistance.
- The front end of the feed chamber is equipped with a blade, and the side cylinder is pushed in place, and the excess waste can be cut off at the same time.
- Large-capacity hopper design, with the compression chamber connected straight down, not blocking material.
- Italy ATOS pressure sensor, you can set the pressure on the touch screen.
- The fan cooling system cools the hydraulic oil.
- Schneider's electrical system, PLC + touch screen.
- H-type hose connector, do not leak oil.





# THANKS

 **ENERPAT**

南通恩派特机械有限公司