

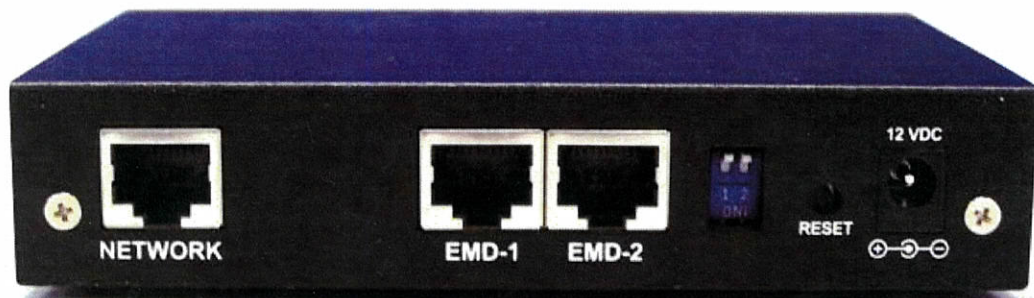
inSentry

Features

- Real-time temperature/humidity and other environmental conditions monitoring for up to 2 separate zones/areas
- Monitors the status of four user-provided contact devices to protect your critical equipments
- Comprehensive environment conditions management and flexible configuration via Web Browser, NMS (Network Management System), Java Applet, Telnet, SNMP or Hyper Terminal
- Automatic events notification via E-mail and SNMP Trap
- Regularly records EMD parameters for statistical analysis and event diagnostics
- Automatically assigned IP via DHCP or BOOTP
- Auto-sense to works in the 10/100Mbps fast Ethernet network environment
- Configuration utility simplifies the firmware upgrade process
- Quick and easy installation (Hot-swappable)
- Distributed system architecture. **No single point of system failure.**



Front View: showing network connect, communication status and power on

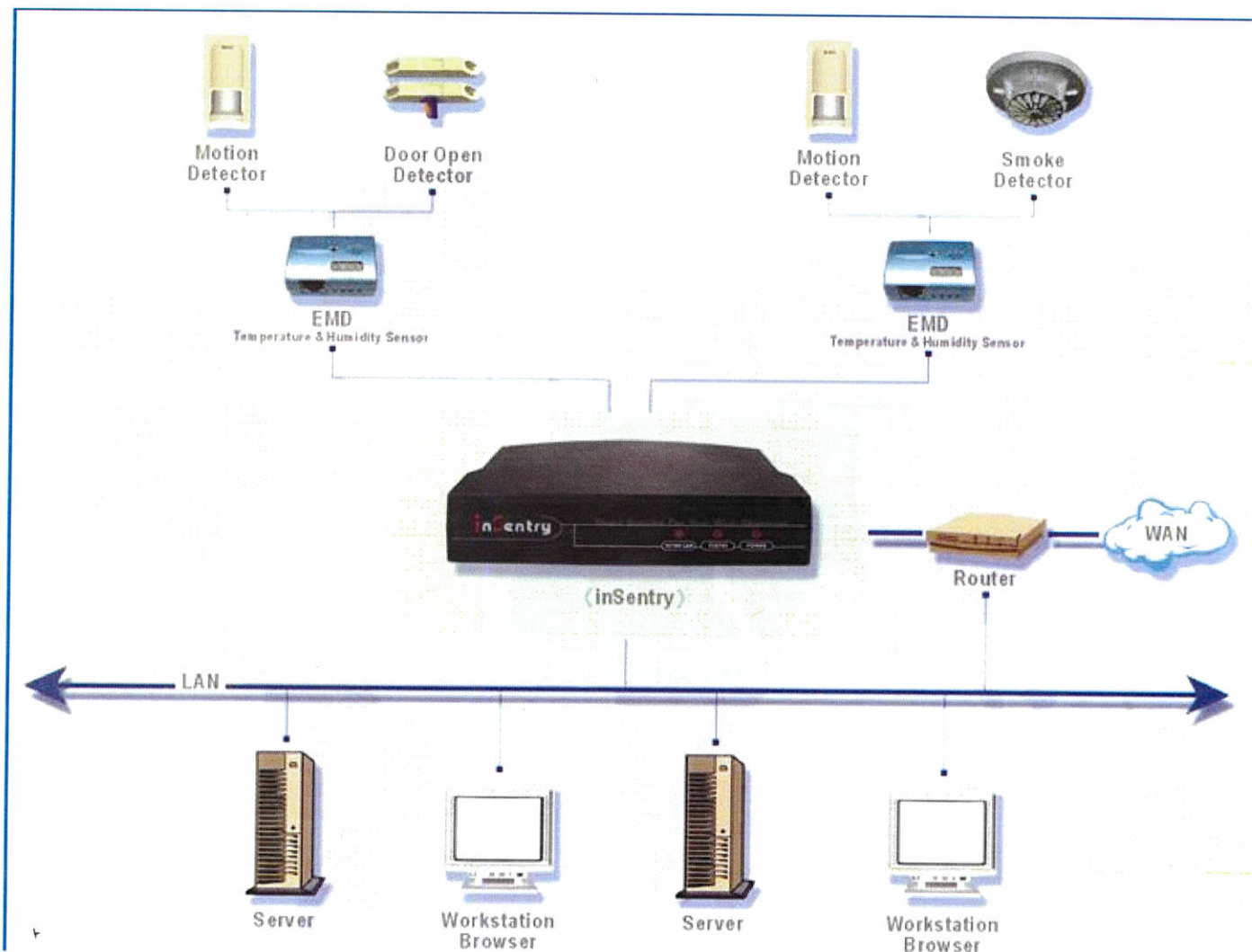


Rear View: showing the 10/100 network connection and the connection ports for the EMD sensors



EMD Temperature and Humidity sensor. Positioning and installation is very convenient. A standard CAT5/5e/6 cable is used to interconnect the EMD sensor into the EMD ports at the rear of the inSentry unit.

inSentry Application Example



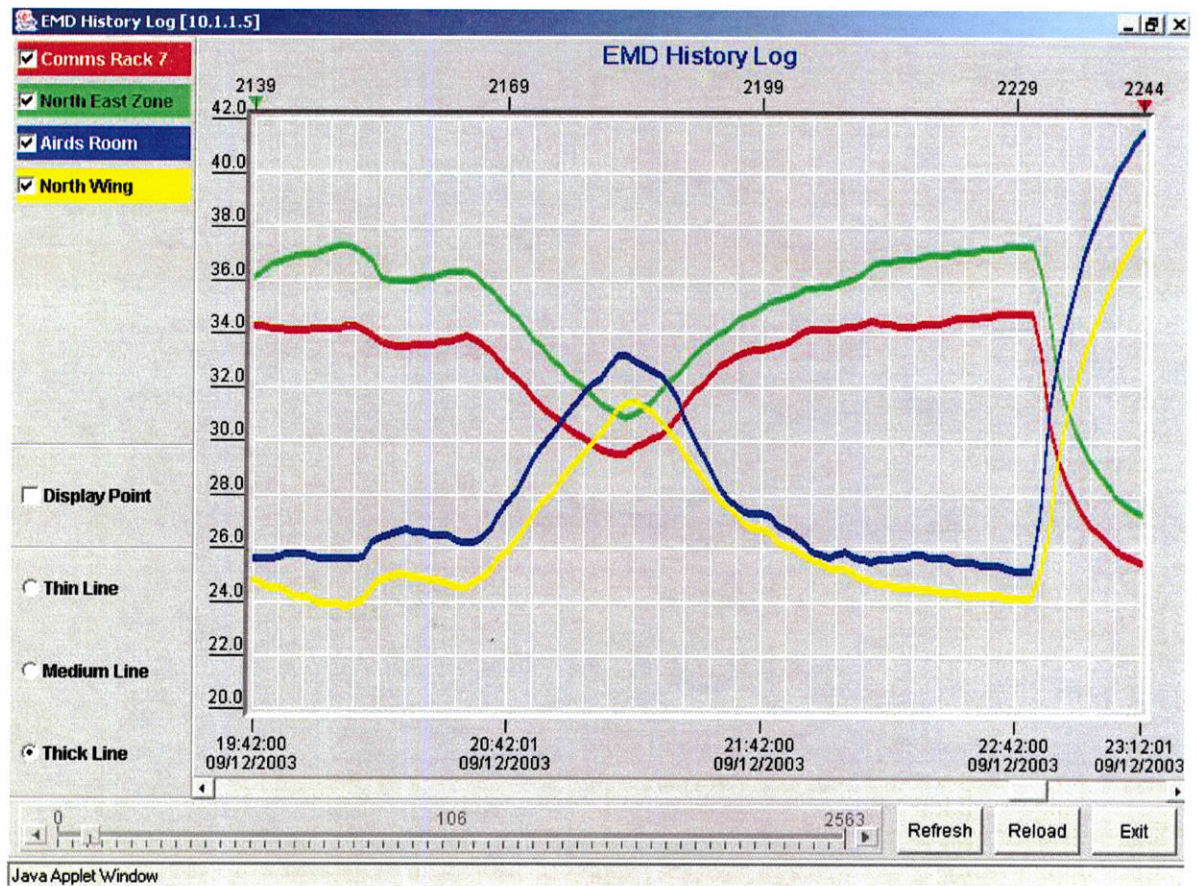
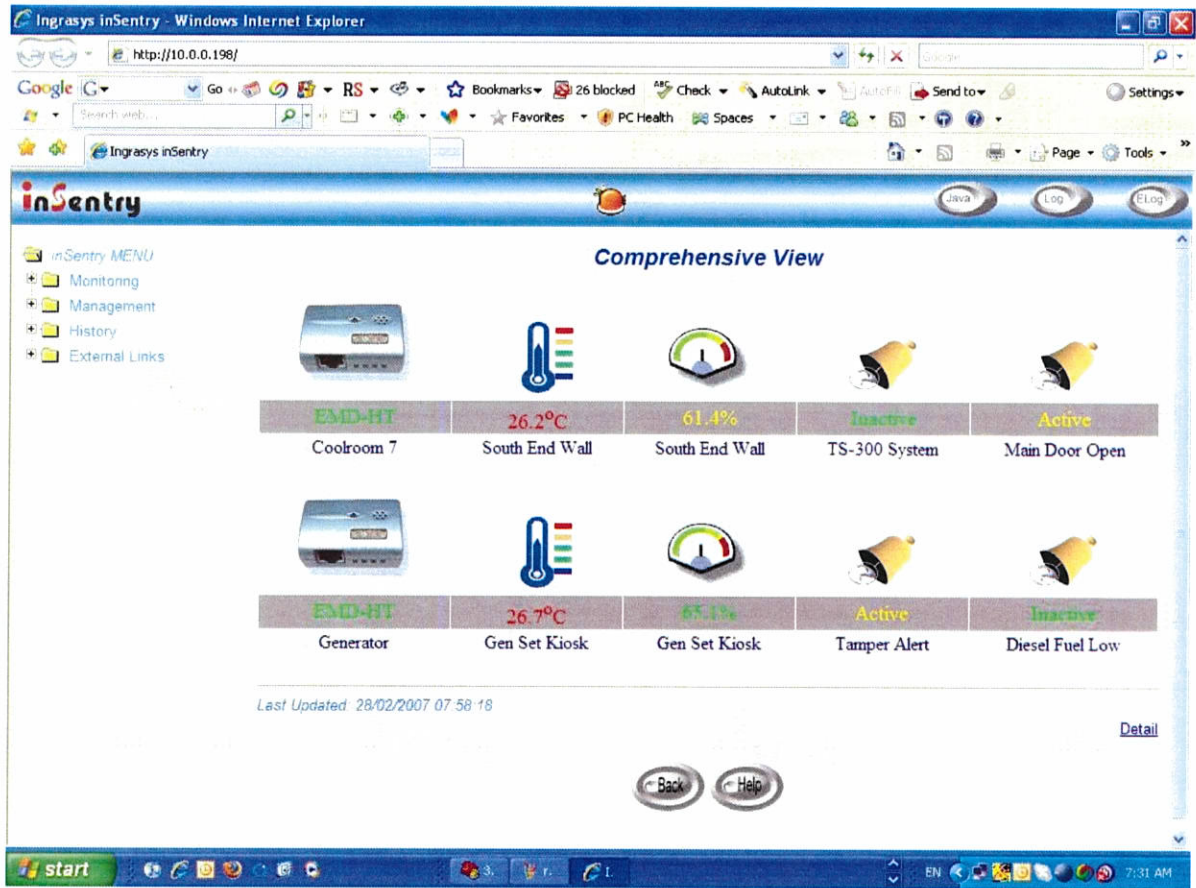
This application sample shows the connectivity of the 2 EMD temperature and humidity sensors. You may like to monitor 2 discreet areas within your communication cabinets.

From the example we discussed recently whereby you have a minimum of 4 communication cabinets per remote facility our recommendation for your communication rooms throughout South East Asia would be to install an inSentry system for every 2 cabinets.

This will provide sufficient sensor monitoring points within each cabinet as 4 separate areas and our field alarm input capacity is 8 individual monitored alarms. I would further suggest a front door rear door sensor per cabinet and a smoke detector per cabinet.

For larger facilities we can engineer an alternate arrangement and configuration of inSentry devices

Sample Screen Shots



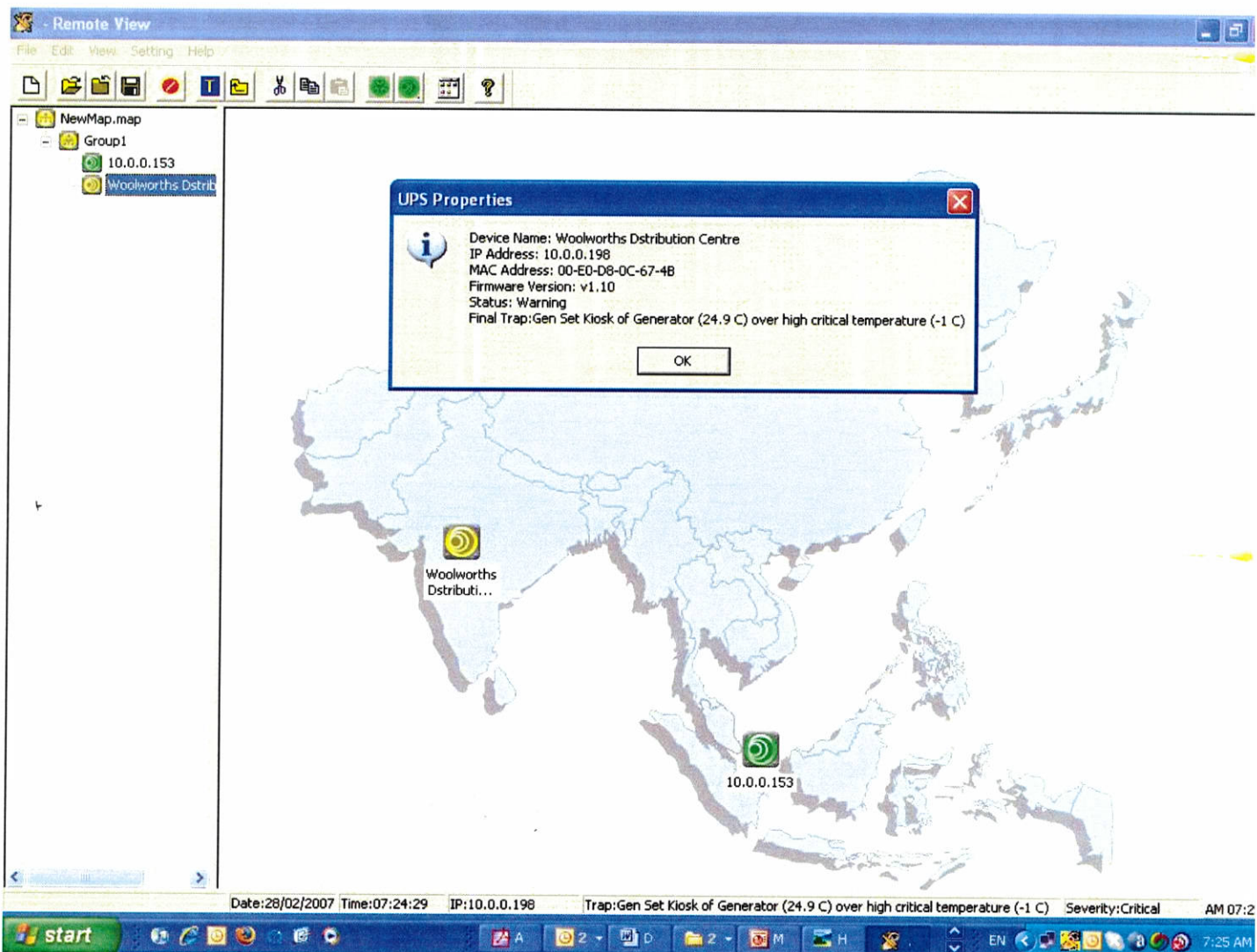
These images represent 2 of the 23 similar detailed and descriptive that are available

Remote View

Remote View is an application running under Windows NT4.0, Windows 2000/XP/2003, used for monitoring inSentry equipped across a WAN/LAN through SNMP protocol.

Remote View can manage up to 1024 devices simultaneously and the hierarchy structure can have up to 8 levels.

Remote View is the client software running on NMS (Network Management System). Users are provided with tree-view and list-view (Icon style and Report style) to monitor device in this software. When trap happens, icon will change to different colors according to the severity level, SNMP trap messages sending email to special address which has been set in E-mail Configuration dialog window, calling a cellphone number which has been set in Short Message Service Configuration dialog window to send the trap message.



Showing example of alarm occurrence within India with at a glance site details

Remote View

File Edit View Setting Help

NewMap.map
Group1
10.0.0.153
Woolworths Distrib

Trap List

List By Severity: ALL

Search By Keywords: Search Search All

Date(D/M/...	Time(H:...)	Device Name	IP Address	Event Trap	Severity	Ackr
28/02/2007	07:24:10	Woolworths...	10.0.0.198	Main Door Open of Coolroom 7 triggered	Warning	NACr
28/02/2007	07:24:15	Woolworths...	10.0.0.198	Coolroom 7 communication restored	Information	NACr
28/02/2007	07:24:15	Woolworths...	10.0.0.198	South End Wall of Coolroom 7 (24.4 C) over high ...	Warning	NACr
28/02/2007	07:24:15	Woolworths...	10.0.0.198	South End Wall of Coolroom 7 (24.4 C) over high c...	Critical	NACr
28/02/2007	07:24:15	Woolworths...	10.0.0.198	South End Wall of Coolroom 7 (71.2 %) over high ...	Warning	NACr
28/02/2007	07:24:15	Woolworths...	10.0.0.198	South End Wall of Coolroom 7 (71.2 %) over high ...	Critical	NACr
28/02/2007	07:24:24	Woolworths...	10.0.0.198	Tamper Alert of Generator triggered	Warning	NACr
28/02/2007	07:24:29	Woolworths...	10.0.0.198	Generator communication restored	Information	NACr
28/02/2007	07:24:29	Woolworths...	10.0.0.198	Gen Set Kiosk of Generator (24.9 C) over high criti...	Critical	NACr

Save to File Detail Acknowledge Close

10.0.0.153

Date:28/02/2007 Time:07:24:29 IP:10.0.0.198 Trap:Gen Set Kiosk of Generator (24.9 C) over high critical temperature (-1 C) Severity:Critical AM 07:..

Detailed list of the alarm conditions. This system can drill down to a further 8 sub levels.