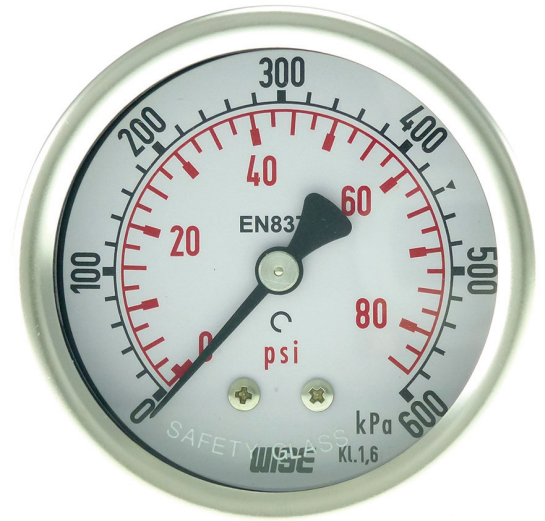


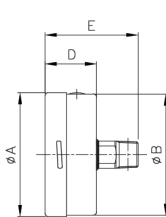
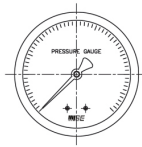


# 63mm CBM Stainless Steel Pressure Gauge

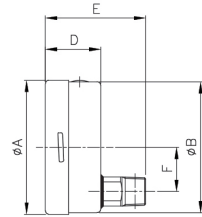
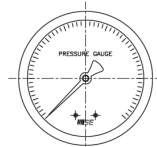
|                                 |  |
|---------------------------------|--|
| <b>Case and bezel material:</b> | 304 Stainless Steel Liquid Fillable          |
| <b>Connection:</b>              | 316 Stainless Steel                          |
| <b>Bourdon tube material:</b>   | 316 Stainless Steel                          |
| <b>Working temperature:</b>     | Ambient = -40~60°C, Process = +200°C         |
| <b>Dial:</b>                    | Dual scale, Black kPa, Red psi on White Dial |
| <b>Ranges:</b>                  | -100~0 kPa to 0~100,000 kPa                  |
| <b>Connection:</b>              | 1/4" NPT Center Back Mount                   |
| <b>Window:</b>                  | Glass Lens                                   |
| <b>Blowout Protection:</b>      | Rubber Plug on Top                           |
| <b>Surge Protection:</b>        | Internal Restrictor                          |
| <b>Over Range Protection:</b>   | 130% of Full Scale                           |
| <b>Movement:</b>                | 304 Stainless Steel                          |
| <b>Pointer:</b>                 | Standard Non-Adjustable                      |
| <b>Accuracy:</b>                | 1.6% of Full Scale                           |
| <b>Protection Rating:</b>       | IP65   |



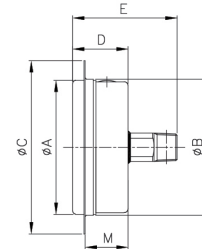
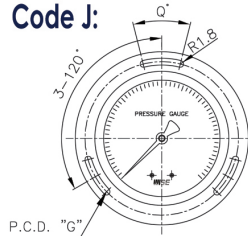
**Code F:**



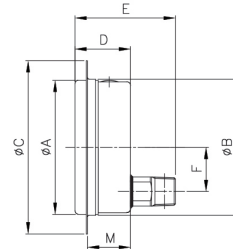
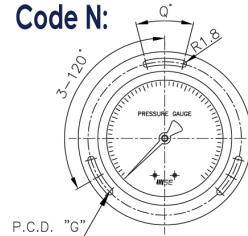
**Code G:**



**Code J:**



**Code N:**



Dimensions in mm

| Type               | Available Code | A    | B    | C  | D  | E  | F  | G  | M  | Q  |
|--------------------|----------------|------|------|----|----|----|----|----|----|----|
| P 252<br>63mm Dial | F              | 63.7 |      |    | 33 | 57 |    |    |    |    |
|                    | G              | 63.7 |      |    | 33 | 59 | 13 |    |    |    |
|                    | J              | 63.7 | 66   | 86 | 33 | 57 |    | 75 | 28 | 15 |
|                    | N              | 63.7 | 66.2 | 86 | 33 | 57 | 13 | 75 | 28 | 15 |

| Range (in kPa)    | Centre Back Mount<br>P/N (Code F) | Range (in kPa)                   | Centre Back Mount<br>P/N (Code F) | Accessories   |
|-------------------|-----------------------------------|----------------------------------|-----------------------------------|---|
| -100-0            | 1369208                           | 0-1600                           | 1369234                           | Front Flange<br>P/N: 1369998                            |
| -100/+150         | On request                        | 0-2500                           | 1369236                           |   |
| -100/+300         | On request                        | 0-4000                           | 1369242                           | Glycerine Filling<br>P/N: 1369999                       |
| -100/+500         | On request                        | 0-6000                           | On request                        |   |
| -100/+900         | On request                        | 0-8000                           | 1369258                           | Adjustable Restrictor<br>1/4" NPT M & F<br>P/N: 2911133 |
| -100/+1500        | On request                        | 0-10000                          | 1369260                           |   |
| 0-100             | 1369218                           | 0-16000                          | 1369262                           | Maximum Pointer<br>P/N: 1369992                         |
| 0-250             | 1369222                           | 0-25000                          | 1369264                           |   |
| 0-400             | 1369224                           | 0-40000                          | 1369266                           | On request  |
| 0-600             | 1369226                           | 0-60000                          | On request                        |   |
| 0-800             | 1369228                           | 0-80000                          | On request                        | On request  |
| 0-1000            | 1369230                           | 0-100000                         | On request                        |   |
| <b>Weight gms</b> | 200                               | Add 70 gms for glycerine filling |                                   |   |

Revision: 0120

The data provided above is for information purposes only and no warranty of accuracy or reliability is given.  
Ross Brown Sales Pty Limited reserves the right to change or modify this data without prior notice.