

# IBEX™



## IBEX EZY TRIM Electric Trimmer Manual (Handpiece and Head Assembly)

Updated as of Feb. 2020



[www.ibexind.net](http://www.ibexind.net)

Reliable

# IBEX

Strength

Technical

## Contents

<b>1</b>	<b>Safety</b> .....	<b>3</b>
<b>2</b>	<b>Scope of Manual</b> .....	<b>4</b>
<b>3</b>	<b>Manual Updates</b> .....	<b>4</b>
<b>4</b>	<b>Installation</b> .....	<b>5</b>
4.1	AC Motor & Trimmer System Installation .....	5
<b>5</b>	<b>Operation Instructions</b> .....	<b>6</b>
5.1	Turning On and Off .....	6
5.5	How to Start/Stop the Blade from Rotating .....	7
5.6	How to Hold the Trimmer .....	8
5.7	Trimmer Operation .....	8
<b>6</b>	<b>Blade Sharpening and Honing</b> .....	<b>9</b>
6.1	Using IBEX S5000 Blade Sharpener .....	9
6.2	Steeling .....	9
<b>7</b>	<b>Blade Changing</b> .....	<b>10</b>
<b>8</b>	<b>EZY TRIM Hand Piece, Cable Maintenance and Lubrication</b> .....	<b>11</b>
8.1	Disassembly of Cable from Hand Piece for Inspection and Lubrication .....	12
8.2	Disconnection of Cable End Assembly from Cable .....	12
8.3	Flex Shaft removal from Casing .....	13
8.4	Flex Shaft – Cleaning, Lubricating and Inspection .....	13
8.5	Removing Trimmer Head from the Hand Piece .....	14
8.6	Disassembly of Hand Piece Assembly .....	15
8.7	Attaching Cable End Assembly to Cable .....	15
8.8	Disassembly of Cable End Assembly .....	16
8.9	Assembly of EZY TRIM Hand Piece .....	17
8.10	EZY TRIM (SAFETY) Hand Piece Connection to Flex Shaft Cable .....	18
8.11	EZY TRIM (STANDARD) Hand Piece Connection to Flex Shaft Cable .....	19
<b>9</b>	<b>EZY TRIM Head Maintenance</b> .....	<b>20</b>
9.1	Grease Cup Assembly (25020)/ Grease Nipple (EZY3001) .....	20
9.2	Disassembly of the EZY TRIM Head .....	21
9.3	Reassembly of the EZY TRIM Head .....	22
9.4	Cleaning of Trimmer Head .....	23
9.5	Inspection and Daily Maintenance .....	24
<b>10</b>	<b>Troubleshooting</b> .....	<b>25</b>
<b>11</b>	<b>Recommended Special Tools</b> .....	<b>26</b>
<b>12</b>	<b>EZY TRIM (SAFETY) Handle Assembly (EZY7496) Parts List</b> .....	<b>27</b>
<b>13</b>	<b>EZY TRIM (STANDARD) Handle Assembly (EZY7490) Parts List</b> .....	<b>28</b>
<b>14</b>	<b>EZY TRIM Cable End Assembly (EZY4378) Parts List</b> .....	<b>29</b>
<b>15</b>	<b>EZY TRIM/EBC 35 - Parts List, Maintenance &amp; Spares Guide</b> .....	<b>30</b>
15.1	EZY TRIM -EBC 35 - Head Assembly Options .....	30
15.2	EBC 35 - Maintenance & Spares Guide .....	31
15.3	EBC 35 - Assembly Parts List .....	32
<b>16</b>	<b>Trimmer Head EZY TRIM 52 - Parts List, Maintenance and Spares Guide</b> .....	<b>33</b>
16.1	EZY TRIM 52 - Head Assembly Options .....	33
16.2	EZY TRIM 52 - Maintenance and Spares Guide .....	34
16.3	EZY TRIM 52 - Assembly Parts List .....	35
<b>17</b>	<b>Trimmer Head EZY TRIM 69 - Parts List, Maintenance and Spares Guide</b> .....	<b>36</b>
17.1	EZY TRIM 69 - Head Assembly Options .....	36
17.2	EZY TRIM 69 - Maintenance and Spares Guide .....	37
17.3	EZY TRIM 69 - Assembly Parts List .....	38
<b>18</b>	<b>Trimmer Head EZY TRIM 90 - Parts List, Maintenance and Spares Guide</b> .....	<b>39</b>
18.1	EZY TRIM 90 Assembly Parts List .....	39
18.2	EZY TRIM 90 - Maintenance and Spares Guide .....	40
18.3	EZY TRIM 90 Assembly Parts List .....	41
<b>19</b>	<b>Trimmer Head EZY TRIM 128 - Parts Lists, Maintenance and Spares Guide</b> .....	<b>42</b>
19.1	EZY TRIM 128 Assembly Parts List .....	42
19.2	EZY TRIM 128 - Maintenance and Spares Guide .....	43
19.3	EZY TRIM 128 - Assembly Parts List .....	44
<b>20</b>	<b>Optional Depth Gauge and Sharpening Steel Assemblies</b> .....	<b>45</b>

20.1	Adjusting the Depth Gauge.....	47
20.2	Fitting Depth Gauge Assembly (with or without Sharpening Steel Assembly) to the Trimmer Head	47
20.3	Fitting Sharpening Pin Assembly to the Trimmer Head.....	48
<b>21</b>	<b>90 Depth Gauge &amp; Sharpening Steel Assemblies Parts Lists.....</b>	<b>50</b>
21.1	90 Depth Gauge & Sharpening Steel Assembly – SKIN Hub (40480) Parts List.....	50
21.2	90 Depth Gauge & Sharpening Steel Assembly – FAT Hub (40490) Parts List.....	51
21.3	90 Sharpening Steel Assembly (40495) Parts List.....	51
21.4	90 Depth Gauge with SKIN Hub (40460) Parts List .....	52
21.5	90 Depth Gauge with FAT Hub (40470) Parts List .....	52
<b>22</b>	<b>128 Depth Gauge &amp; Sharpening Steel Assemblies Parts Lists.....</b>	<b>53</b>
22.1	128 Depth Gauge & Sharpening Steel Assembly – SKIN Hub (40580) Parts List .....	53
22.2	128 Depth Gauge & Sharpening Steel Assembly – FAT Hub (40590) Parts List.....	54
22.3	EBC 128 Sharpening Steel Assembly (40595) Parts List.....	55
22.4	EBC 128 Depth Gauge with SKIN Hub (40560) Parts List .....	55
22.5	EBC 128 Depth Gauge with FAT Hub (40570) Parts List .....	56
<b>23</b>	<b>Vacuum Attachment Assembly for 35 Heads(40123) – Parts List .....</b>	<b>57</b>
<b>24</b>	<b>Vacuum Attachment Assembly for 52 Heads(EZY40226) – Parts List.....</b>	<b>58</b>

# 1 Safety

**READ THIS ENTIRE MANUAL, ALL WARNING LABELS, AND ALL RELATED SAFETY INFORMATION BEFORE APPLYING POWER!**

**REFER TO THE AC MOTOR MANUAL BEFORE USING THE SYSTEM AND BEFORE CONNECTING THE SHAFT TO THE MOTOR.**

1. For prevention of injury, always wear protective gloves when using the Trimmer system.
2. Leave all safety devices in place and periodically check for proper function.
3. Always use specified parts to assure proper fit and function. Use of parts other than specified parts may lead to malfunction.
4. IBEX takes no liability for unauthorized modifications made to any IBEX equipment.
5. Rotary knives such as the IBEX Trimmer employ a sharp circulating blade at high speed, which can cause severe laceration or even loss of limb. Extreme care should be taken in the handling of such knives to prevent injury.

## **⚠ WARNING**

<b>DO NOT</b>	Use the Trimmer unless you have read and understood this manual thoroughly
<b>NEVER</b>	Leave the Trimmer unattended whilst the blade is still moving
<b>ALWAYS</b>	Keep hands and fingers away from the moving blade  Use common sense when operating this machine  Disconnect the Trimmer from the electrical supply before changing the blade, cleaning, making adjustments or leaving the machine unattended
<b>REPORT</b>	Any fault immediately to your IBEX agent
<b>CAUTION</b>	Only qualified and trained servicemen <b>MUST</b> maintain the machine as per the manual

## 2 Scope of Manual

This manual **MUST** be made available to anyone who will install, operate, maintain, clean, or come in contact with this machine. It is important that the contents of this manual be carefully read and understood by everyone.

In the event that someone is unable to read or understand the material in this manual, all instructions and safety precautions should be carefully explained to them.

To obtain additional copies, write or call:

Attention: Customer Service

IBEX Industries Limited  
PO Box 58-640  
Botany, Auckland 2163  
New Zealand  
Tel: +64 9 274 2096  
Fax +64 9 274 2371  
Email [nzsales@ibexind.net](mailto:nzsales@ibexind.net)

**This manual is not to be copied, photographed or reproduced by any means electronic or otherwise without the prior written permission of IBEX Industries Limited.**

## 3 Manual Updates

This manual is the most current version available at the time of issue. From time to time sections of this manual will be updated to give the most accurate information.

If you wish to receive the latest version of this manual, it is available on request and will be emailed.

## 4 Installation

**IMPORTANT: INTERNAL FLEX SHAFT MUST BE GREASED PRIOR TO USE. Refer to Section 8 for instructions on disassembly for lubrication.**

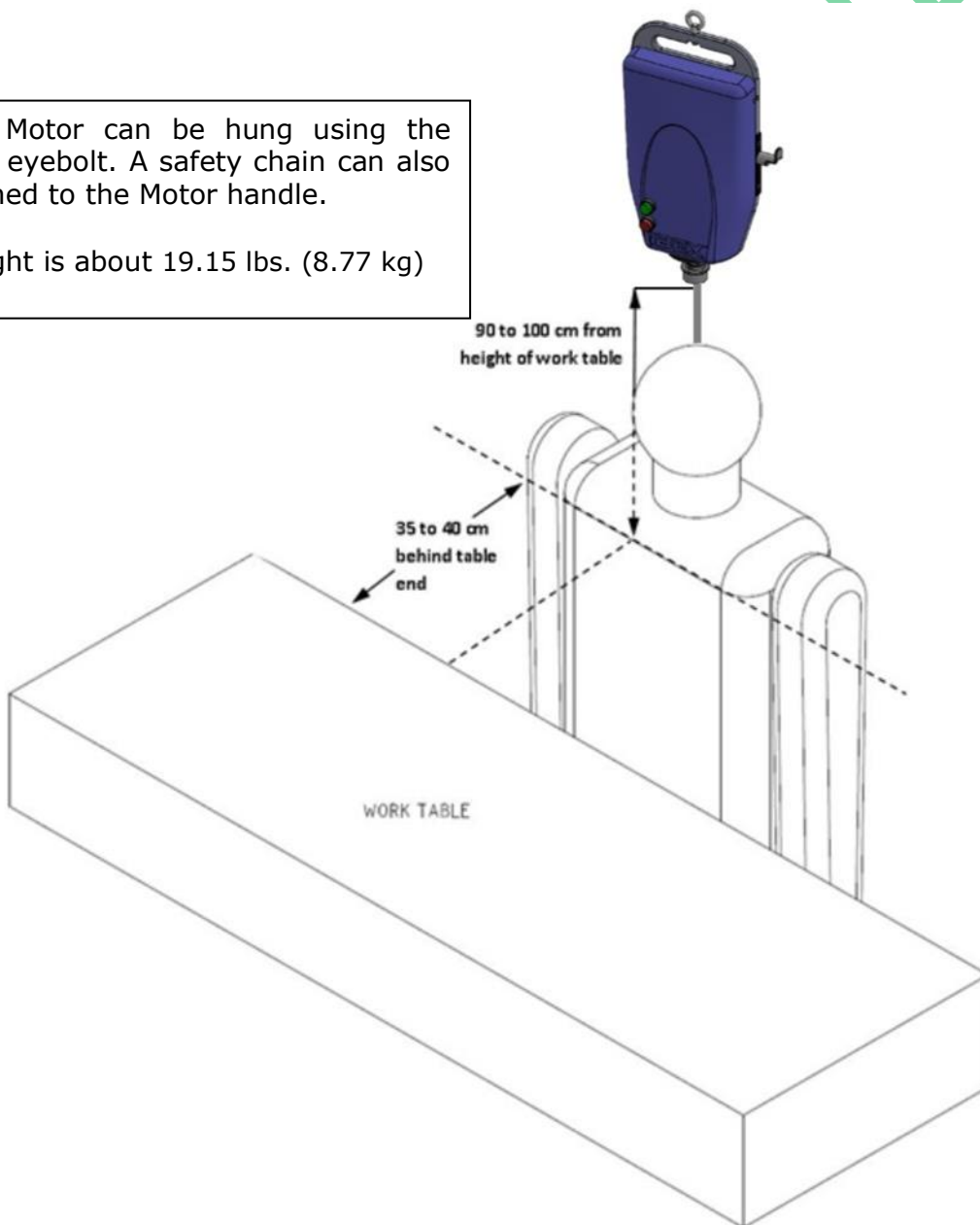
### 4.1 AC Motor & Trimmer System Installation

The AC Motor and the Trimming system should be mounted according to the design perimeters outlined below. Correct mounting aids the unit to run properly and hassle free. It will also achieve the correct distance relationship between the user and the AC Motor.

**NOTE: Improper mounting has been linked to premature failure of Flex Shaft and Casing. It has also been linked to causing undue stress on the operator. Proper mounting dimensions are shown in the figure below.**

The AC Motor can be hung using the attached eyebolt. A safety chain can also be attached to the Motor handle.

Unit weight is about 19.15 lbs. (8.77 kg)



## 5 Operation Instructions

**IMPORTANT: INTERNAL FLEX SHAFT MUST BE GREASED PRIOR TO USE. Refer to Section 8 for instructions on disassembly for lubrication.**

### 5.1 Turning On and Off

**REFER TO THE AC MOTOR MANUAL BEFORE USING THE SYSTEM.**

1. The red switch on the AC Motor will illuminate as soon as the lead cable of the Motor is connected to the Mains. This shows the Motor is ready to be turned ON.
2. Once the Trimmer is out of the hanger, hold it in one hand.

**Warning: With protective gloves on, check that the blade does not bind in the blade housing. Binding of the blade may cause the handpiece to spin on start-up.**

3. With the opposite hand press the green ON switch. The green switch will glow indicating that the motor is ON.

### 5.2 Shutting the unit Off

1. Press the red button on the motor to stop the motor running. The green switch will stop illuminating and the red switch will illuminate.

### 5.3 Connecting the flexible shaft

1. Insert the Motor end of the shaft into the base of the connector pushing the connector upwards.
2. The square end of the inner cable needs to align with the square end of the Motor. Once this is aligned, simply release the connector on the Motor and the Cable is now locked in the Motor, ready to operate.

## 5.4 To Hang Up Trimmer Handpiece

**WARNING: ROTARY KNIVES SUCH AS THE IBEX TRIMMER EMPLOY A SHARP CIRCULATING BLADE, WHICH CAN CAUSE SEVERE LACERATION OR EVEN LOSS OF LIMB. EXTREME CARE SHOULD BE TAKEN IN HANDLING OF SUCH KNIVES TO PREVENT INJURY.**

1. To hang the Trimmer in the Handpiece hanger, make sure that the safety lever has been released in the handle and the blade is not rotating.
2. Simply hang the Trimmer in the hanger as shown in the figure below.
3. Trimmer should never be engaged/operated when in the hanger.



## 5.5 How to Start/Stop the Blade from Rotating

When the AC Motor is turned on, push Cable into the Hand Piece and hold the Lever of the Hand Piece firm and the blade rotates. To stop the blade from rotating, release the Lever.





## 5.6 How to Hold the Trimmer

Before operation, hold the IBEX Trimmer in the cutting hand and stand in the working position. Examine the work area and be sure that there are no severe bends in the Casing and that the area is free from obstructions.

The Trimmer Hand Piece should be held in the dominant hand with the cutting edge of the Blade directed downward (facing the cutting surface).

The Grease Cup Assembly (25020) / Grease Nipple (EZY3001) should be directed upward (perpendicular to the cutting surface).

Turn the AC Motor on (instructions on previous page) and then begin to cut with the Trimmer. Be sure to hold the Trimmer by gripping lightly around the mid to lower part of the handle. The thumb should rest in the yoke of the Trimmer handle.

**NOTE: BE SURE NOT TO GRIP TOO TIGHTLY. A PROLONGED TIGHT GRIP MAY CAUSE HAND INJURY. CHANGING GRIP OFTEN WILL HELP TO PREVENT INJURY.**

## 5.7 Trimmer Operation

You are now ready to use the IBEX EZY TRIM Trimmer for trimming. It is advisable to go through a training course on the details of meat trimming, but typically the following practises apply.

- For small tight areas, such as in bone trimming, a scoop action is recommended
- Large flat bones require a steady gliding stroke
- The most common motion is a scraping or hoeing action which scrapes across the bone to remove product
- DO NOT TOUCH THE BLADE whether it is rotating or not
- Pass the cutting edge over the product, removing the desired pieces of meat, skin, etc. Always use movements that are away from your body and others
- Avoid contact with bones where possible. Never cut directly into a bone
- Keep the trimmings away from the cutting surface so the work area does not become cluttered
- If possible, turn/rotate the product being trimmed so the Cable is maintained as straight as possible.

## 6 Blade Sharpening and Honing

### 6.1 Using IBEX S5000 Blade Sharpener

For the best sharpening results, use the IBEX S5000 Blade Sharpener. Correct sharpening procedure for the S5000 Blade Sharpener can be found in the S5000 Manual.

**Use a steel to maintain an edge (to hone the edge) on the Blade during operation.**

### 6.2 Steeling

Hold the steel at the Blade's original angle. This prevents "rounding" of the Blade's cutting edge.

#### Outside of Blade

Place the lower flat edge of the Blade on the steel and turn on the Trimmer; the Blade is honed as it rotates.

#### Inside of Blade

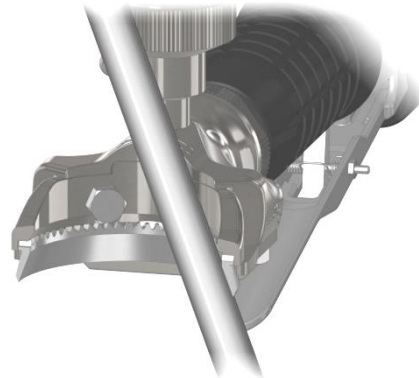
To remove burrs ALWAYS make the last pass of the steel on the Blade from the inside, but only for a few seconds and as close to the original Blade angle as is possible.

#### Outside Steeling - Straight Blade



Outside Steeling

#### Inside Steeling - Straight Blade (Head cutaway for illustration)



Inside Steeling



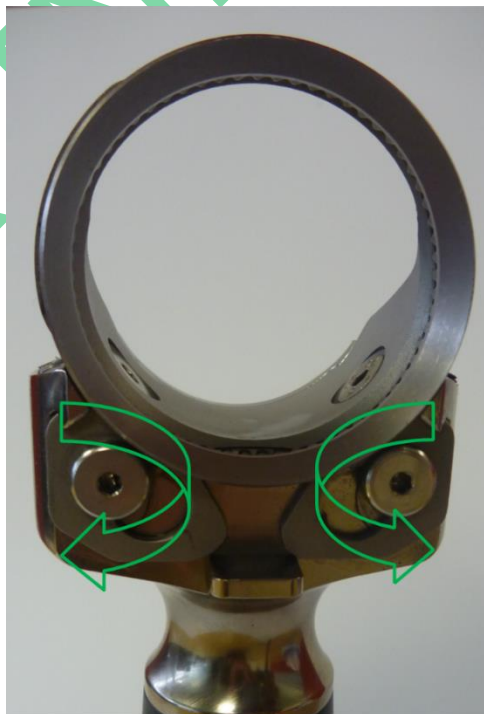
## 7 Blade Changing

### **⚠️ WARNING**

**Never attempt to install or remove any parts while the machine is running or connected to any power supply.**

**Always disconnect the unit from the Trimmer before removing the Blade.  
Never run the machine with any parts missing.**

1. Disconnect tool from the power supply
2. Disengage hand piece from the cable. Lifting the safety lever should release the cable from the handle
3. 35 Head – Slide the Keeper plate by loosening the two screws, replace the Blade and slide the Keeper Plate forward until just touching the screw and tighten the Keeper Plate Screws
4. 52,69 and 90 Heads - Using the square head on the EZY7700 tool, turn the retainer plate screws as shown in the figure (Figure 8) to release the old blade. Remove the old blade and replace it with a new one
5. Using the square head of the EZY7700 tool gently tighten the retainer plate screws in the opposite direction to hold the new blade. Do not try to over tighten the screw
6. 128 Heads – Simply unscrew the screws (EZY3045) on both the Keeper Plates, replace the Blade and then push the Keeper Plates up and tighten the screws. Make sure that the Keeper plate is pushed only up to the flat part of the Blade and it does not touch the angled part of the Blade.



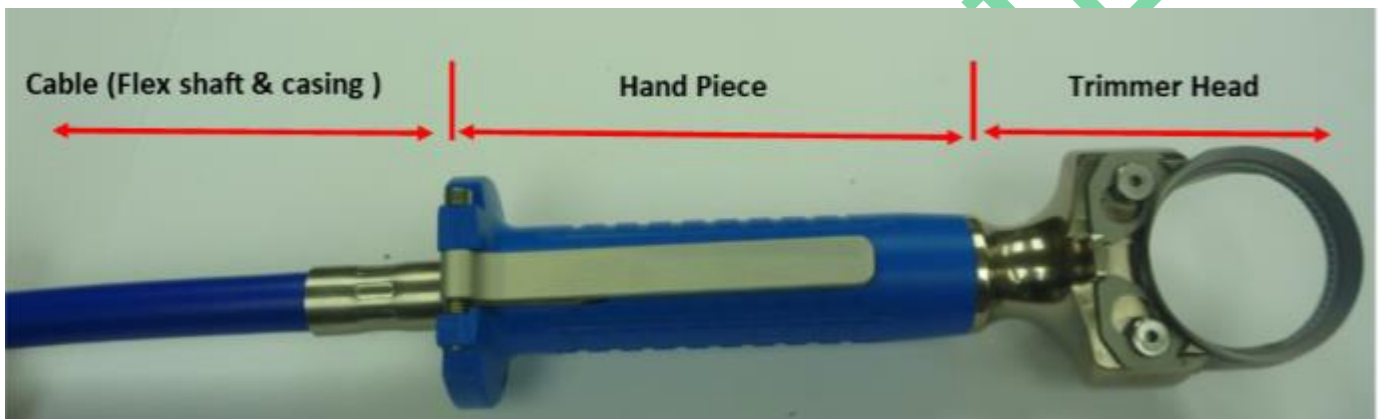
## 8 EZY TRIM Hand Piece, Cable Maintenance and Lubrication

**IMPORTANT:**

**INTERNAL FLEX SHAFT MUST BE GREASED PRIOR TO USE. Refer to Sections 10.1 to 10.3 for instructions on disassembly and lubrication.**

**Ensure Trimmer and Cable are on a clean, dry surface for maintenance. DO NOT ALLOW FLEX SHAFT ON THE GROUND or grit and dirt will adhere to flex shaft, affecting its performance and length of wear.**

To keep the AC Trimmer performing at the optimum level the AC Cable, Hand Piece and Trimmer Head must be disassembled, cleaned and inspected daily.



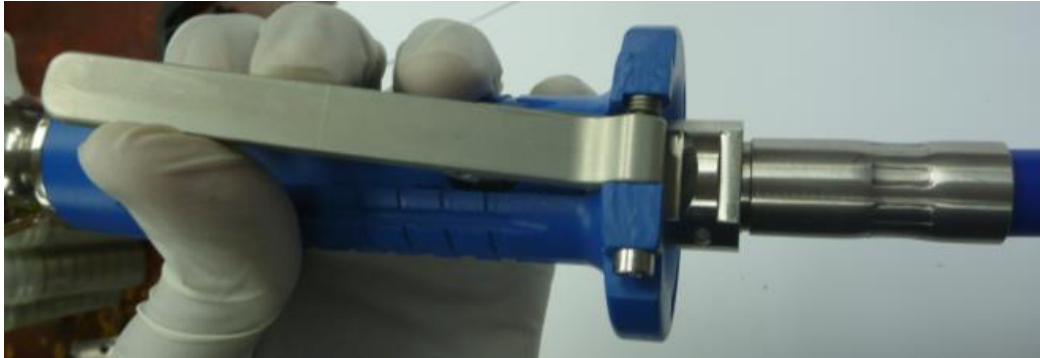
Some of the tools required to disassemble and reassemble the EZY TRIM system are:

- Hex / Allen Keys –3mm, 2.5mm and 1.5mm
- 8mm Spanner
- EZY7700 T-Bar tool with 4mm Square and Hex Head for CAM - see Section 13 - Recommended Special Tools
- Internal Circlip Plier



## 8.1 Disassembly of Cable from Hand Piece for Inspection and Lubrication

Lift the Lever (EZY4406) on the Hand Piece and the cable should spring loose and can be easily removed.

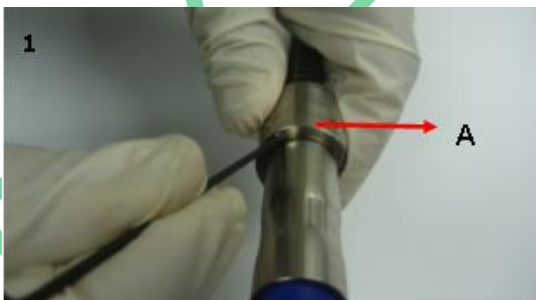


## 8.2 Disconnection of Cable End Assembly from Cable

**IMPORTANT:**  
Ensure Cable is on a **CLEAN, DRY SURFACE** before disconnecting Cable End Assembly.

**DO NOT ALLOW FLEX SHAFT ON THE GROUND** or grit and dirt will adhere to the flex shaft, affecting its performance and length of wear.

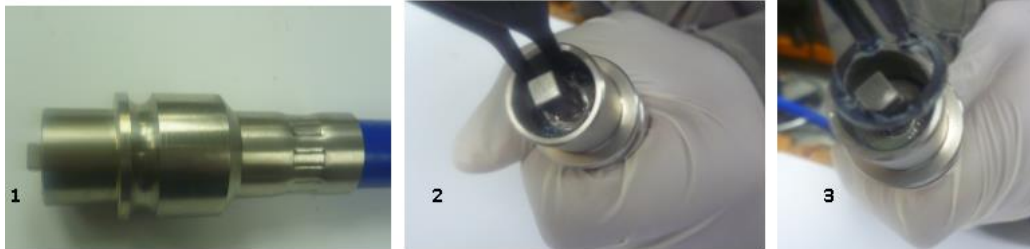
1. To disconnect the Cable End Assembly (EZY4378) from the Cable, use a 1.5mm Hex key and loosen the screw(EZY5282) on the Cable End Assembly as shown below (A)
2. Push the Cable Locking Pin(EZY7447) out as shown in B
3. Gently pull the Cable End Assembly out of the Cable and now the Flex Shaft can be removed from the Casing for cleaning and lubricating as shown in C



### 8.3 Flex Shaft removal from Casing

**IMPORTANT: DO NOT ALLOW FLEX SHAFT ON THE GROUND or grit and dirt will adhere to the flex shaft, affecting its performance and length of wear.**

1. Using a circlip plier, remove the circlip(FPCIR001) from the Casing at the Motor Connection End of the Casing as shown in 2 and 3 below
2. The Flex Shaft will now slide out of the Casing easily



### 8.4 Flex Shaft – Cleaning, Lubricating and Inspection

**IMPORTANT: Ensure that the washer (FPWAS001) at the Flex Shaft end which fits into the AC Motor is ALWAYS in place. DO NOT run operate the Flex Shaft/Cable without this washer.**



#### Prior to Use

1. Use suitable food grade grease, apply a thin layer to the outside of the Flex Shaft. It is best to scoop out some grease in your hand and apply it to the Flex Shaft by pulling it through your hand
2. Insert Flex Shaft into Casing, and connect Cable with Cable End Assembly and Hand Piece (Washer – FPWAS001, Circlip -FPCIR001)

#### Weekly Maintenance

1. Remove Flex Shaft from Casing
2. Wipe it down with a cloth soaked in solvent. This will clean the used grease off the outside of the shaft
3. Use compressed air to blow any excess grease off the Flex Shaft and from the inside of the Casing
4. Inspect the Flex Shaft and Casing for wear, kinks and broken wires. If any of these conditions are observed, replacement is necessary
5. Using suitable food grade grease, apply a thin layer of grease to the outside of the Flex Shaft. It is best to scoop out some grease in your hand and apply it to the Flex Shaft by pulling it through your hand

6. Replace Flex Shaft into Casing, insert Circlip and make sure that it sits well inside the groove provided (the Flex Shaft will now not come out of the casing). Connect Cable with Cable End Assembly and Hand Piece.

## 8.5 Removing Trimmer Head from the Hand Piece

1. Lift the Lever(EZY4406) in the Hand Piece and insert the T-Bar Spanner (EZY7700) into the base of the Hand Piece. The pins of the T-Bar spanner should fit into the grooves of the Sleeve Adaptor(EZY7442)



2. Hold the Trimmer Head firm and rotate the T-Bar Spanner in an anti-clockwise direction as shown below

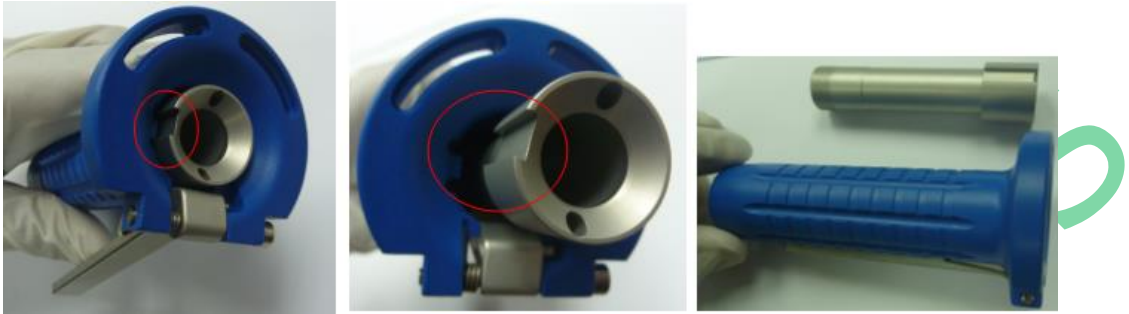


3. Remove the Trimmer Head from the Hand Piece



## 8.6 Disassembly of Hand Piece Assembly

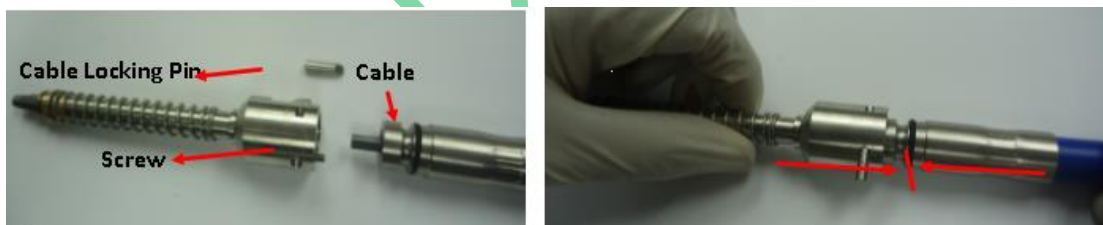
1. Follow steps 1 to 3 in Section 10.5
2. After the removal of the head from the Hand Piece, the Sleeve Adaptor(EZY7442) will move freely in the Handle. Align the cut-end of the Sleeve Adaptor to the slot in the Handle so the Sleeve Adaptor can slide out (see below images)



3. The items removed for inspection and maintenance are:
  - a. EZY TRIM Handle (EZY7439)
  - b. Sleeve Adaptor(EZY7442)
  - c. Trimmer Head

## 8.7 Attaching Cable End Assembly to Cable

1. Insert Flex Shaft end of Cable into Cable End Assembly(EZY4378), push the parts together as shown below



2. Take note that the cable locking pin(EZY7447) sits on the slot in the Cable End Assembly and hence make sure that the Cable End Assembly and the Flex Shaft are aligned correctly

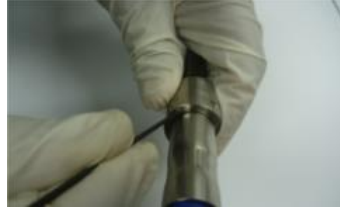


3. If the Cable End Assembly and the Flex Shaft are aligned, then the Locking Pin will slide through easily



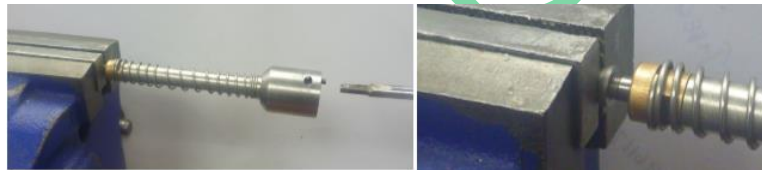


- Using a 1.5mm Hex key, tighten the screw(EZY5282) on the Cable End Assembly so the Cable Locking Pin remains intact



### 8.8 Disassembly of Cable End Assembly

- Remove Cable End Assembly from the Cable - Refer section 10.7
- To remove the Pinion Drive(EZY4385) from the Cable End Assembly, hold the Pinion Drive on a vice. Insert the 4mm Square head of the EZY7700 tool on the rear end of the Cable End Assembly and rotate clockwise. The Pinion Drive is now separated.



- To remove the Drive Shaft(EZY4386), simply pull from the rear of the Cable End Assembly or if it is tight, insert a 2mm punch and gently tap using a small hammer to push the Drive Shaft out.

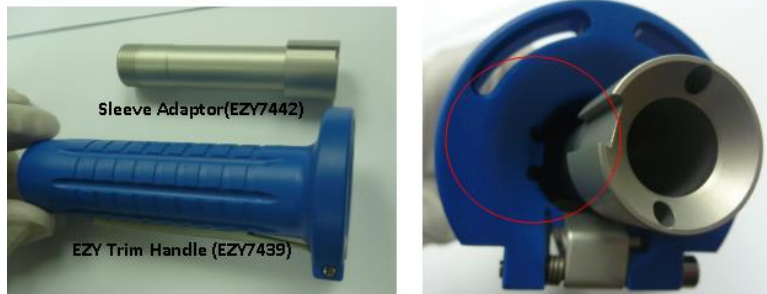


- To remove the Compression Spring(SU050497IM) from the Drive Shaft(EZY4380), hold the Drive Shaft on a vice and using an 8mm spanner remove the Front Bronze Bush(SU050485IM). The Compression Spring should now slide out.



## 8.9 Assembly of EZY TRIM Hand Piece

1. Align the cut-end of the Sleeve Adaptor to the slot in the Handle so the Sleeve Adaptor can slide inside the handle (see below images). The Bearing Sleeve Bush (SU050488IM) is already inserted into the Sleeve Adaptor(EZY7442)



2. Lift the Lever(EZY4406) in the Hand Piece and insert the T-Bar Spanner (EZY7700) into the base of the Hand Piece. The pins of the T-Bar spanner should fit into the grooves of the Sleeve Adaptor(EZY7442)



3. Hold the T-Bar Spanner firm and thread the Head until it reaches halfway. Now ensure that the alignment pin locates into the hole of the Trimmer Head

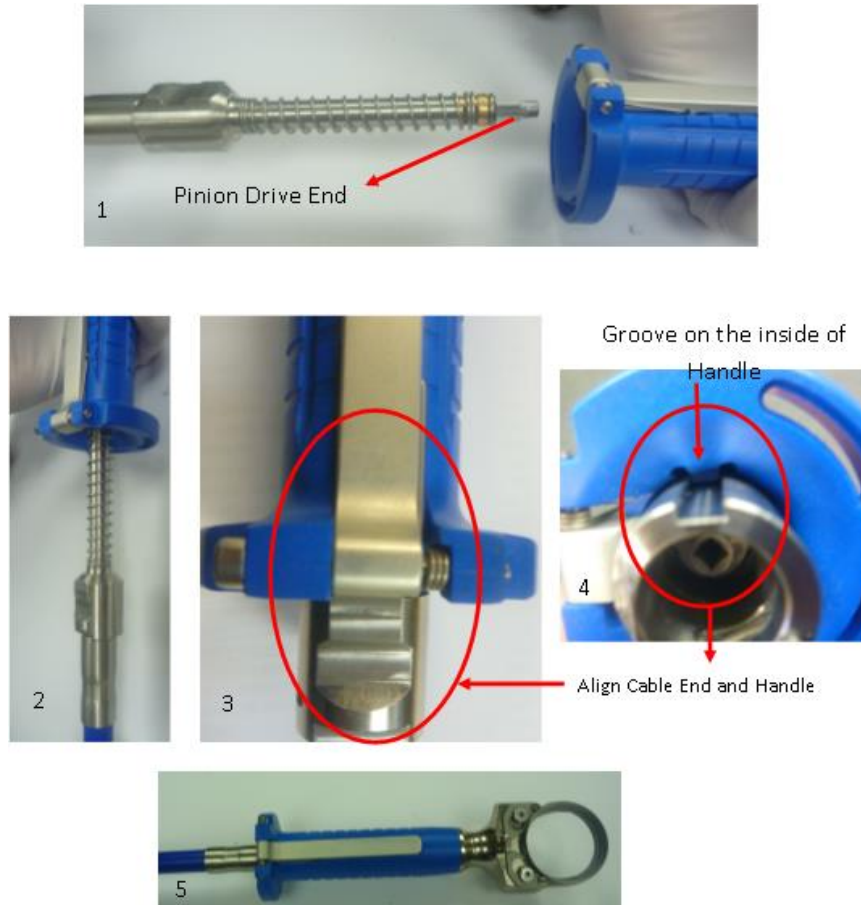


4. Holding the Trimmer Head firm and using a clockwise direction, tighten the Sleeve Adaptor. Make sure that the alignment pin locks into the hole in the Trimmer Head.



## 8.10 EZY TRIM (SAFETY) Hand Piece Connection to Flex Shaft Cable

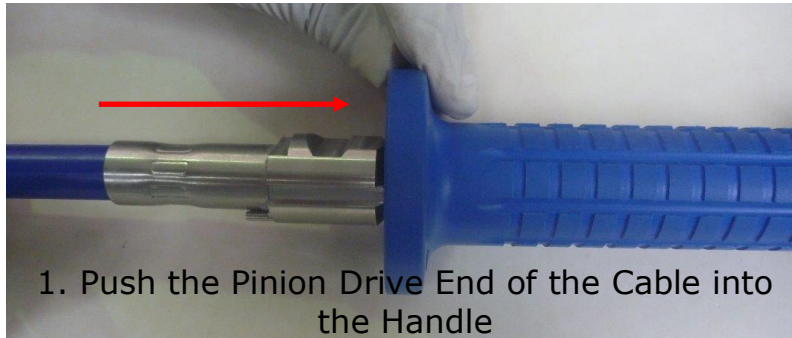
1. Insert Cable End Assembly (EZY4378) into the base of the Hand Piece Assembly; ensure that the cut end of the Cable End Assembly fits into the groove on the inside of the Handle as shown in (4) below. Also, the flat end of the Cable End Assembly should align with the Lever of the handle as in (3) below



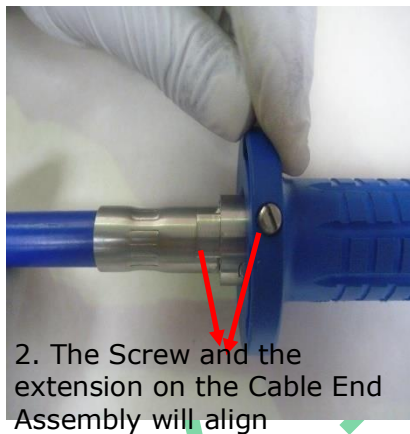
2. Simply push the Cable inside the Handle and the Cable End Assembly will lock to the Handle
3. Test by rotating the inner cable – if cable is fitted properly the blade should also rotate
4. If the Safety Lever moves freely in the Handle, then the Handle Spring will require replacement. Please refer section 11.5 for Handle Spring replacement.

### 8.11 EZY TRIM (STANDARD) Hand Piece Connection to Flex Shaft Cable

1. Insert Cable End Assembly (EZY4378) into the base of the Hand Piece Assembly; ensure that the cut end of the Cable End Assembly fits into the groove on the inside of the Handle as shown in below.



2. Tighten the Handle Lock Screw by holding on to the Cable. Ensure that the Cable Lock Screw is tightened only to the extent that it holds the Cable from falling out and the Cable is free to rotate.



3. Test by rotating the cable – if cable is fitted properly the blade should also rotate.



## 9 EZY TRIM Head Maintenance

All parts mentioned in this section are illustrated in the exploded views of the Trimmer Heads under **Parts Listings** starting with **Section 18**.

### **IMPORTANT**

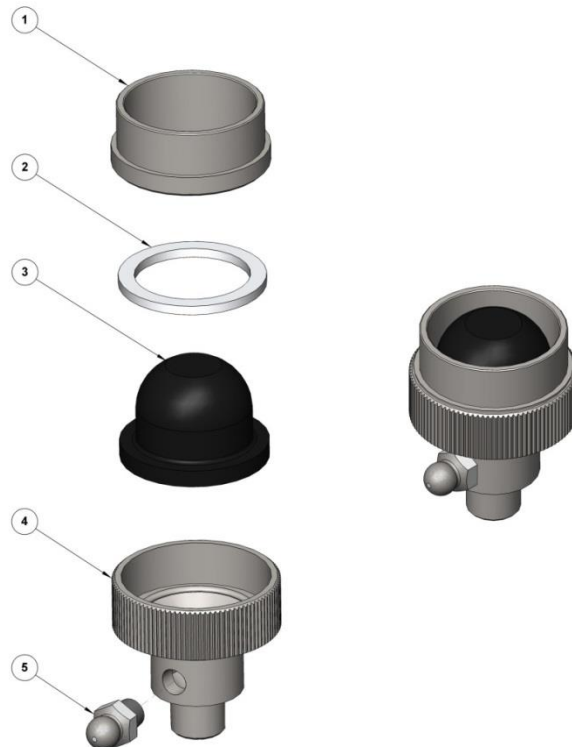
- **Disconnect the power supply to the tool before doing any maintenance on it**
- **Never try to clean the tool while it is running**
- **Never operate, or allow to be operated, any IBEX product that has been modified by the use of non-IBEX parts, or with IBEX parts which have been modified in any way**
- **Never use strong caustic cleaners on any parts of the Trimmer Hand Piece**
- **Never allow Trimmer Hand Pieces to soak, or remain in cleaning solutions for extended periods of time**

### 9.1 Grease Cup Assembly (25020)/ Grease Nipple (EZY3001)

The Trimmer Head is lubricated by means of a Grease Cup Assembly (25020) or a Grease Nipple (EZY3001) based on the choice of the user.

#### **Grease Cup Assembly**

This is filled using a Grease Nipple (25021) located on the side of the body. The assembly can be dis-assembled by unscrewing the Retainer Ring (25023) from the body and removing the Grease Rubber Cup (25025). The unit can now be washed clean.



No	Part No	Description	No	Part No	Description
1	25023	Retainer Ring	4	25022	Grease Cup Base
2	25024	Gasket	5	25021	Grease Nipple
3	25025	Grease Rubber Cup			

## 9.2 Disassembly of the EZY TRIM Head

- **Removal of Frame from the Trimmer Hand Piece**

Refer to **Section 10.5** for Removal of Frame/Head Assembly from the Trimmer Hand Piece

- **Grease Cup Assembly / Grease Nipple**

Unscrew the Grease Cup Assembly or Grease Nipple from the Frame in an anti-clockwise direction.

- **Blade**

Refer to **Section 9** for blade changing instructions.

- **Blade Housing**

For an EZY TRIM 52 Head – Un-screw the two EZY TRIM Counter Sunk Screws (EZY3070) in the Blade Housing to remove it.

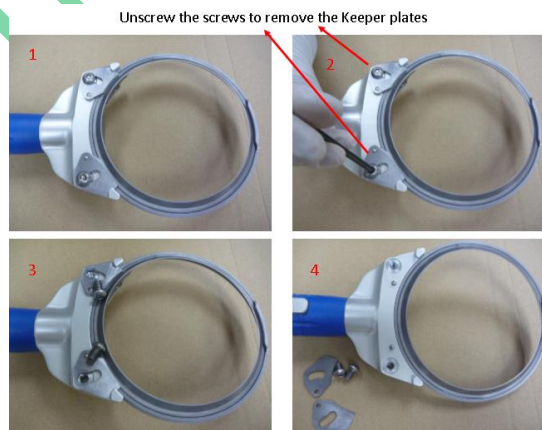
For an EZY TRIM 128 Head – Firstly, remove Frame Cap (EZY7410 or EZY7413) by unscrewing the two EZY TRIM Counter Sunk Screws (EZY3046) and then remove the two Counter Sunk Screws in the Blade Housing. The Blade Housing can now be removed.

- **Pinion**

Once the Blade Housing has been removed, the EZY TRIM Pinion (EZY6136) should freely slide out of the Frame. If there is any resistance, push gently from the Trimmer Hand Piece side of the Head until it comes free.

- **Keeper Plate – Left and Right 128 Head**

Simply unscrew the screws(EZY3045) on both the Keeper Plates to remove them.



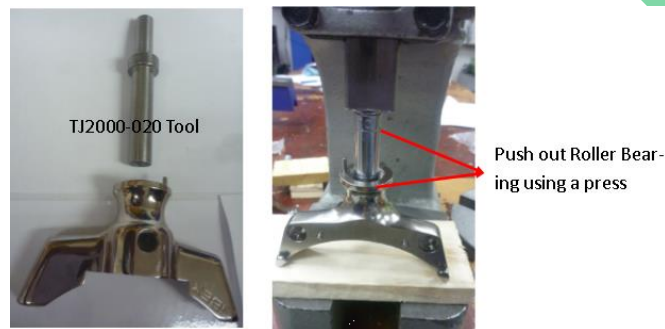
### 52,69 & 90 Heads

1. Loosen the Threaded Ball Catch Screws (EZY6255) on both sides of the Frame as shown in the image below. The Keeper Plates can now be removed along with the Blade Retainer Eccentric (EZY7338-L & R).



• **Needle Roller Bearing Removal**

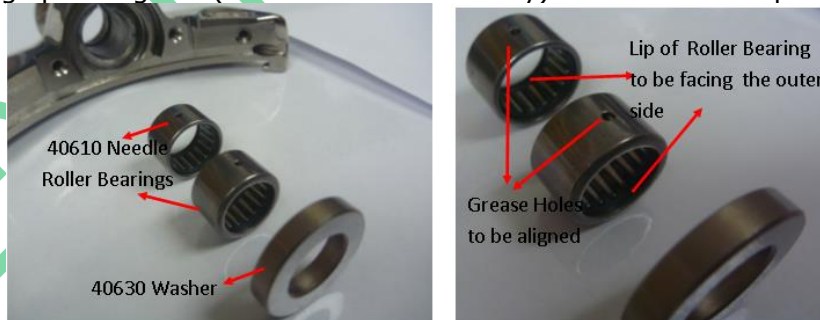
Remove the Needle Roller Bearings (40610) and Washer (40630) from the Frame by inserting the long end of the Bearing Tool (TJ2000-020) into the bottom (Trimmer Hand Piece end) of the Frame and gently tapping - or ideally pressing - the Needle Roller Bearings and Washer out of the Frame. Refer to below pics. below



**9.3 Reassembly of the EZY TRIM Head**

• **Needle Roller Bearing and Washer Insertion**

Using the short end of the Bearing Tool (TJ2000-020) carefully press the Needle Roller Bearings (40610) and Washer (40630) into the Frame (with the grease holes on the Needle Roller Bearings pointing up towards the grease cup hole and the thick end of the Needle Roller Bearings pointing out (for ease of disassembly). Refer to below pics. below



- **Pinion Insertion**

Slide the EZY TRIM Pinion (EZY6136) into the Needle Roller Bearings through the Washer.

- **Blade Housing**

Align the Blade Housing to the frame and tighten the screws.

- **Keeper Plate**

**128 Heads**

1. Keeper Plates on the 128 Heads are the same for both the left and right. Align the Keeper Plates to the Housing by gently pressing them on to the locating pins and then tighten the screws(EZY3045). Make sure that the Keeper plate is pushed only up to the flat part of the Blade and it does not touch the angled part of the Blade.

**52, 69 & 90 Heads**

1. Align the Blade Retainer Eccentric to the Keeper Plate and then press it to fit inside the Frame. The 52, 69 & 90 Heads uses different Left and Right plates which are clearly etched on the Plates. The etched mark should be on the outer side.
2. Tighten the Ball Catch screws on both sides of the frame to an extent that they hold the Eccentric Cam. **DO NOT OVER TIGHTEN** the Ball Catch screws as it will hold the Eccentric Cam from moving.

- **Blade**

Refer to **Section 9** for blade replacement details.

- **Fitting Head to Trimmer Hand Piece**

Fit Trimmer Head onto Hand Piece – refer to **Section 10.5**.

- **Grease Cup Assembly / Grease Nipple**

Screw the Grease Cup Assembly/ Grease Nipple on to the top of the Frame in a clockwise direction.

## 9.4 Cleaning of Trimmer Head

**Only personnel trained to perform this maintenance should be allowed to perform this work.**

The EZY TRIM Head should be completely dis-assembled and cleaned – see **Section 11.2**. Each part (including the EZY TRIM Frame) should be cleaned with a suitable solution and rinsed. After cleaning, apply a thin coating of food-grade oil (i.e. mineral oil) to each part.

- All parts **MUST** be cleaned with warm soapy water – built up deposits of processing debris should be removed with a scrubbing brush.
- All parts should be sterilised using a non-toxic, quaternary ammonium-based disinfectant, sanitizer, fungicide and deodorizer.
- All equipment should be rinsed thoroughly with clean water following cleaning.
- Do not use Sodium Hydroxide (NaOH) based products and other similar strong cleaning products.
- **ALL PRODUCTS MUST** have current USDA, DPI and MAF approvals for this kind of use.



- The motor unit (outer casing), as it is hanging, should be washed with a suitable solution and rinsed thoroughly. All food and other particles should be removed from the machine.

## 9.5 Inspection and Daily Maintenance

### • Blade

Check for wear on or damage to the Blade - replace if required. For sharpening instructions see **Section 8 – Blade Sharpening**.

### • Blade Housing

Check for excessive movement of the Blade in the Housing. Replace Housing and / or Blade if worn or damaged.

### • Pinion

Check for worn or chipped teeth - replace if worn or damaged.

### • Needle Roller Bearings

Prompt replacement, when worn, will prolong the life of other Trimmer Hand Piece components. The Needle Roller Bearings may be worn and should be inspected if excessive vibration or heat is being generated from within the Hand Piece or Head.

There should be minimal side-to-side movement of the Pinion within the Needle Roller Bearings, and they should rotate easily by hand. If too much movement is present, the Needle Roller Bearings **MUST** be replaced. If the Pinion has no movement or it rotates with difficulty, the Needle Roller Bearings **MUST** be replaced.

### • Frame

Inspect the Frame periodically for stripped or damaged threads or damage to any mount surfaces that may affect the assembly of the tool - replace if damaged.

### • Handle Spring

Check Lever on the Handle and make sure that the tension on the Handle Spring is maintained. If the Lever moves freely then the Handle Spring(EZY4405) will require replacement. To replace Spring, simply remove screw on the side of the handle and insert a new Spring.

## 10 Troubleshooting

Always visually check Blade Housing and Blade are still circular and not dented first, as unit may have been dropped – if necessary, replace affected parts.

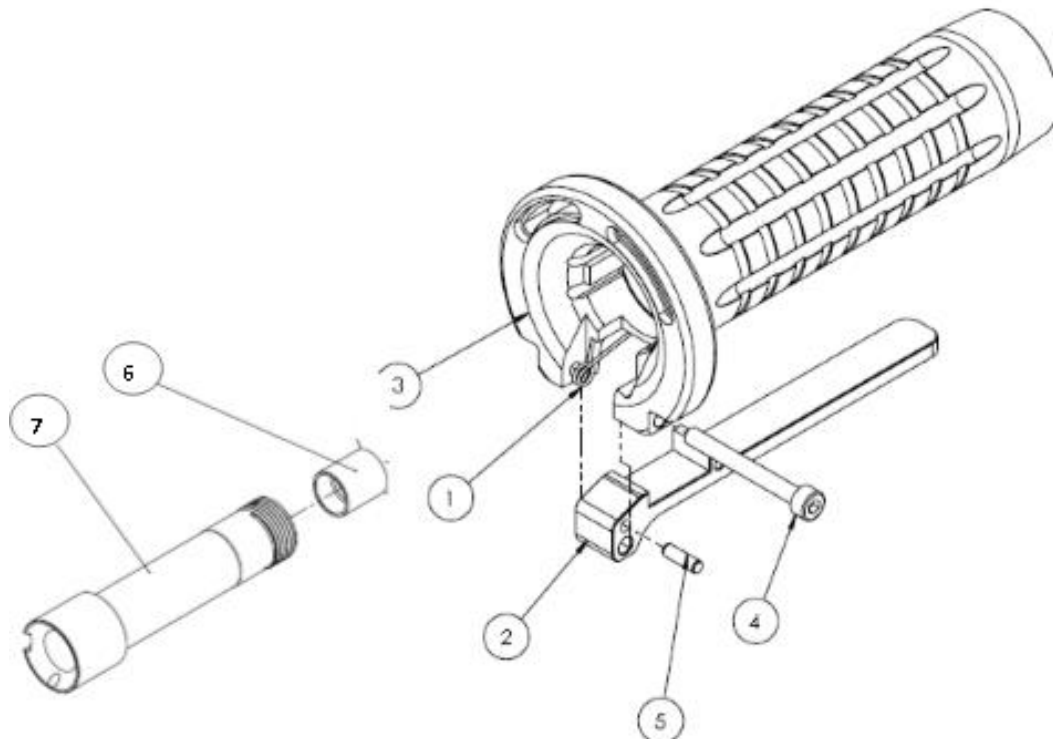
Problem	Probable Cause	Solution
Hand Piece or Trimmer Head Vibrates	Check for worn or damaged teeth on the Pinion and Blade.	Replace if necessary.
	Check the fit of the Pinion and Needle Roller Bearings.	Replace if necessary.
	Check the fit of the Blade in the Blade Housing	If loose - replace Blade Housing, or both items.
	Flex Shaft not lubricated	Lubricate Flex Shaft. See <b>Section 10.4 - Flex Shaft Cleaning, Lubricating and Inspection.</b>
Hand Piece gets hot during use	Blade too tight in housing.	Replace blade housing.
Excessive heat in Trimmer Head	Trimmer Head items incorrectly assembled.	Disassemble and carefully reassemble as explained <b>Sections 11.2 and 11.3</b>
	Needle Roller Bearings not aligned correctly or damaged.	Discard Needle Roller Bearings and reassemble with new correctly aligned Needle Roller Bearings.
	Check for correct fit of the Pinion – if the Needle Roller Bearings have not been pressed in fully and the Pinion is too close to the Frame cap, then it can create heat build-up.	Remove Needle Roller Bearings and re-press into the Frame.
	Excessive grease within the assembly – this will cause higher drag and thus load the various parts and create heat.	Clean and re-grease lightly.
Blunt Blade	Refer to <b>Section 8 – Blade Sharpening and Honing</b> for details on honing.	Should this not be successful then the Blade should be sharpened using the IBEX S5000 Blade Sharpener or be replaced with a new Blade.
	In severe cases replacement Blades may be needed.	For recommended order quantities of Blades refer to Maintenance & Spares Guide from <b>Section 18</b> onwards.

Problem	Probable Cause	Solution
Irregular rotation of the Blade	Check the Blade and Pinion for chips or missing teeth.	Replace if necessary.
	Check the fit of the Pinion and the Needle Roller Bearings.	Replace if necessary.
Undue Flex Shaft wear or breakage.	Flex Shaft and Casing not lubricated.	Lubricate Flex Shaft.
	Kinks or sharp bends in Flex Shaft and/or Casing, due to improper mounting or misuse.	Be sure that motor swivels freely. If shaft vibration occurs, replace Flex Shaft and Casing.
	Improper installation of AC Motor and Trimmer.	Check AC Motor mounting dimensions in <b>Section 5.1 – AC Motor Installation.</b>
	Casing worn, causing Flex Shaft to helix inside of Casing.	Replace Casing assembly.
	Binding in Trimmer Head.	Disassemble and clean Trimmer Head. Reassemble. Blade should turn freely when Trimmer is not connected to Flex Shaft.

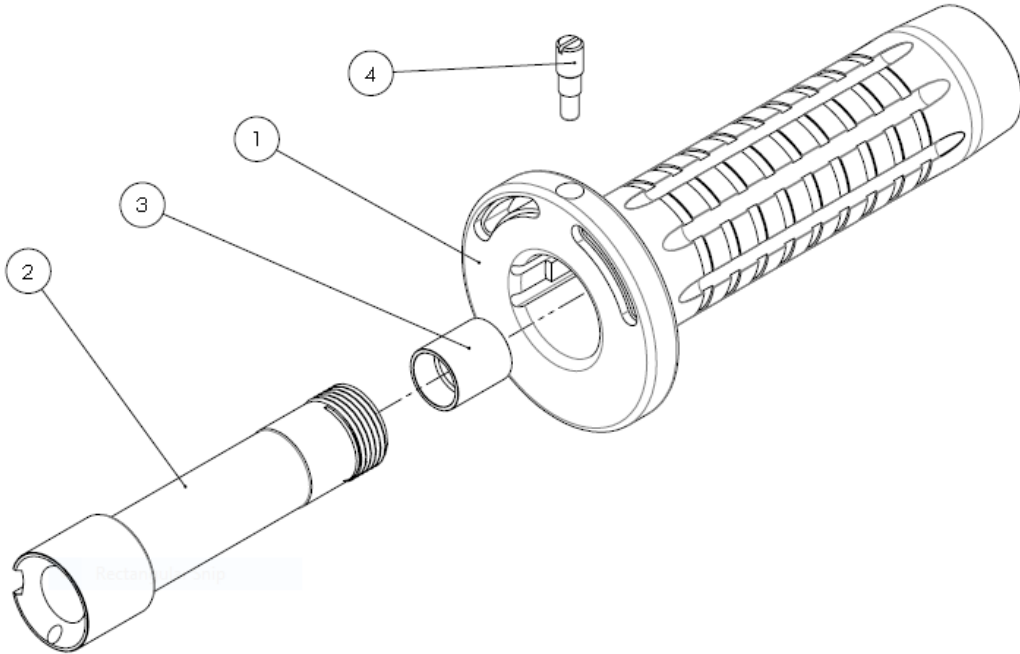
## 11 Recommended Special Tools

Description	Qty.	Part Number
EZY/EBC 90/128/180 Bearing removal Tool	1	TJ2000-020
Circlip Plier	1	
Head Removal Tool/T-Bar Spanner	1	EZY7700

**12 EZY TRIM (SAFETY) Handle Assembly (EZY7496) Parts List**

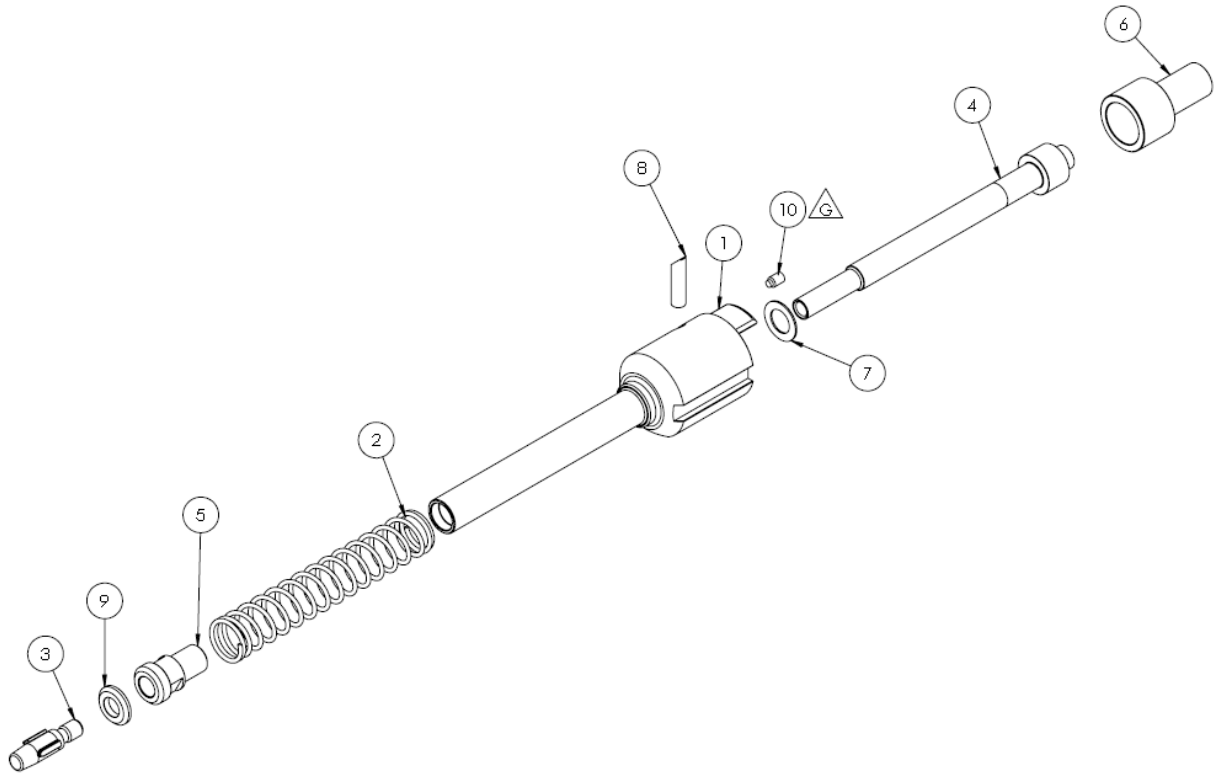


No	Part No	Description
1	EZY4405	Handle Spring
2	EZY4406	Lever
3	EZY7439	Safety Handle
4	SU035099	Cap Screw
5		Dowel Pin (Supplied together with EZY4406)
6	SU050488IM	Bearing Sleeve Bush
7	EZY7442	Sleeve Adaptor

**13 EZY TRIM (STANDARD) Handle Assembly (EZY7490) Parts List**

No	Part No	Description
1	EZY7438	Standard Handle
2	EZY7442	Sleeve Adaptor
3	SU050488IM	Bearing Sleeve Bush
4	SU033261-A	Retainer screw for Standard Handle

**14 EZY TRIM Cable End Assembly (EZY4378) Parts List**



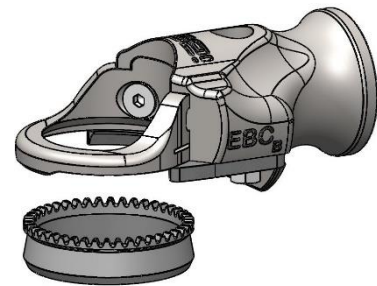
No	Part No	Description
1	EZY4380	Drive Shaft Pipe
2	SU050497IM	Compression Spring
3	EZY4385 (or) EZY4384	Pinion Drive for 52,69,90 & 128 Heads Square Pinion Drive for EBC 35 and EBC 180 Heads
4	EZY4386	Drive Shaft
5	SU050485IM	Front Bronze Bush
6	EZY7072	Rear Bronze Bush
7	EZY7445	Washer
8	EZY7447	Cable Locking Pin
9	EZY7787	Thrust Washer
10	EZY5282	Grub Screw

## 15 EZY TRIM/EBC 35 - Parts List, Maintenance & Spares Guide

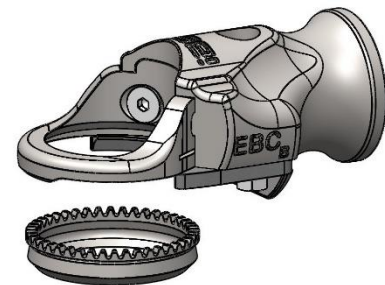
The EZY TRIM System is compatible and works only with an **EBC 35** Head Assembly. In order to use the EBC 35 Head Assembly with the EZY TRIM electric version, the Pinion Drive(EZY4385/84) on the Cable End Assembly(EZY4378) should have the Square type Pinion Drive(EZY4384).

### 15.1 EZY TRIM -EBC 35 - Head Assembly Options

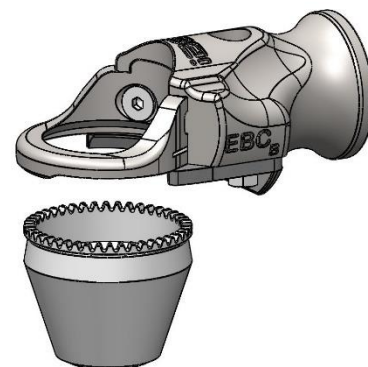
**40100S - EBC 35 Head Assembly - includes 35 Straight Blade (25017)**



**40100H - EBC 35 Head Assembly- includes 35 Hooked Blade (25018)**



**40100C - EBC 35 Head Assembly- includes 35 Conical Blade (25019)**



## 15.2 EBC 35 - Maintenance & Spares Guide

### EBC 35 Trimmer Head - Assemblies & Spares

Please note that this is a RECOMMENDED guide only.

Requirements for spares replacement vary with the level of maintenance, operator's care, quality of compressed air, and types of application.



Inspect

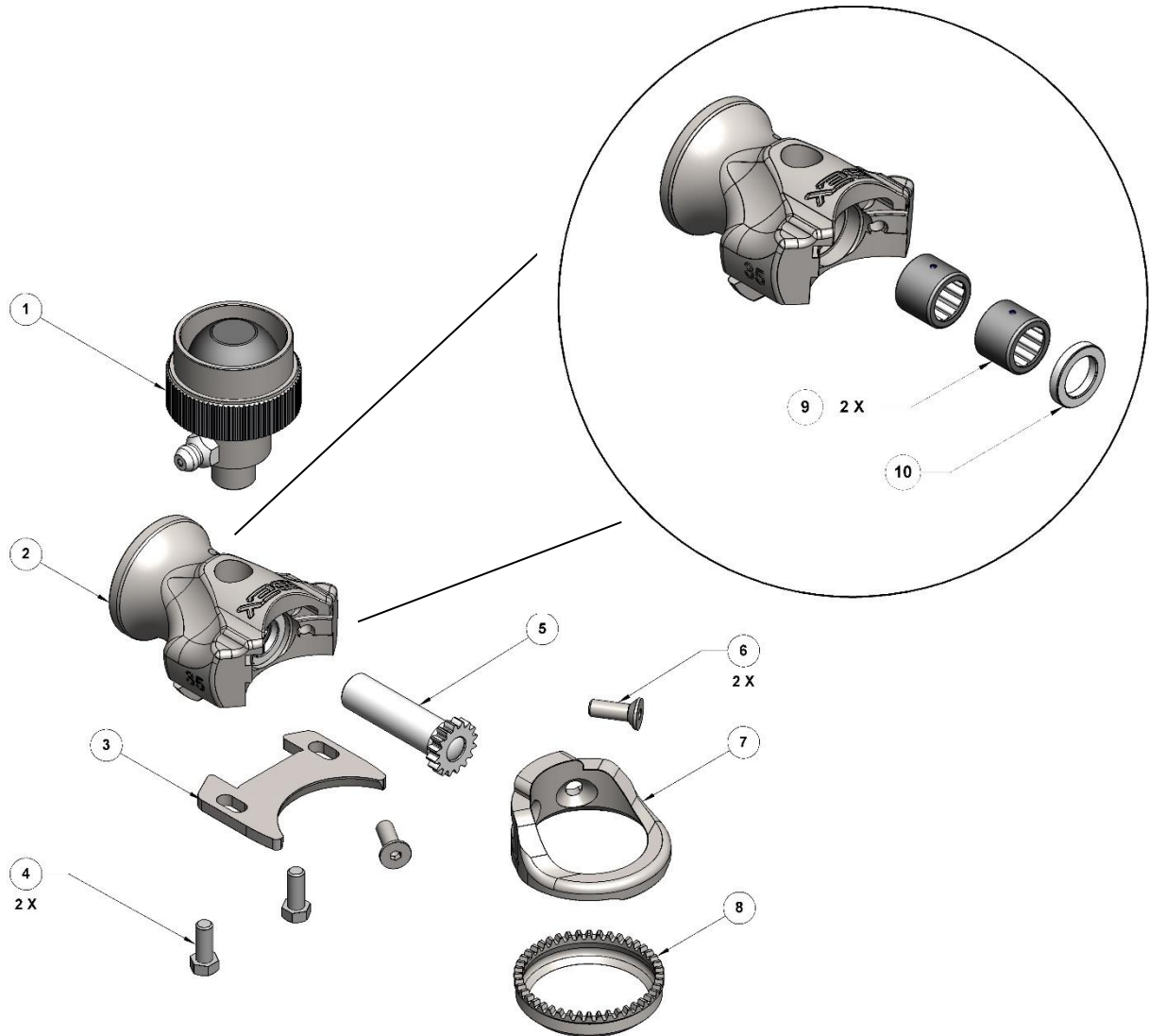
Inspect & Replace if Worn

Number	Description	Part Number	Recommended Spares Inventory Per Head	Maintenance Schedule							
				Qty	Daily	Weekly	Monthly	3 Monthly	6 Monthly	9 Monthly	12 Monthly
	<b>EBC 35 Trimmer Head</b>	<b>40100</b>									
	<b><u>EBC 35 - Spares</u></b>										
1	Grease Cup Assembly	25020	1		Inspect	Inspect	Inspect	Inspect	Inspect & Replace if Worn	Inspect	Inspect & Replace if Worn
2	Frame with Fittings	40115	**		Inspect	Inspect	Inspect	Inspect	Inspect	Inspect	Inspect
3	Keeper Plate	40130	3		Inspect	Inspect	Inspect	Inspect & Replace if Worn	Inspect	Inspect & Replace if Worn	Inspect
4	Keeper Plate Screw (2 of)	25015	2		Inspect	Inspect	Inspect	Inspect	Inspect	Inspect	Inspect
5	Pinion	40660	2-3		Inspect	Inspect	Inspect & Replace if Worn	Inspect & Replace if Worn	Inspect & Replace if Worn	Inspect & Replace if Worn	Inspect & Replace if Worn
6	Housing Screw (2 of)	25012	2		Inspect	Inspect	Inspect	Inspect	Inspect	Inspect	Inspect
7	Blade Housing (2 of)	40120	2-3		Inspect	Inspect	Inspect	Inspect & Replace if Worn	Inspect & Replace if Worn	Inspect & Replace if Worn	Inspect & Replace if Worn
8	Blade *	see below	4-5		Inspect	Inspect	Inspect	Inspect & Replace if Worn	Inspect & Replace if Worn	Inspect & Replace if Worn	Inspect & Replace if Worn
9	Bearing - Needle Roller Bearing (2 of)	25605	2 to 4		Inspect	Inspect	Inspect	Inspect	Inspect & Replace if Worn	Inspect	Inspect & Replace if Worn
10	Washer	40620	1		Inspect	Inspect	Inspect	Inspect & Replace if Worn	Inspect & Replace if Worn	Inspect & Replace if Worn	Inspect & Replace if Worn
	<b><u>Blade Types</u></b>										
8a	* Blade - Straight	25017									
8b	* Blade - Hooked	25018									
8c	* Blade - Conical	25019									
**	Assuming standard wear and tear and no abuse, most frames will last approximately 1 ½ to 2 years										



### 15.3 EBC 35 - Assembly Parts List

2 - Exploded View of EBC 35 Frame Assembly comes with Needle Roller Bearings & Washer



No	Part No	Description	No	Part No	Description
1	25020	Grease Cup Assembly	6	25012	EBC 35 Housing Screw (2 of)
2	40115	EBC 35 Frame with Fittings	7	40120	EBC 35 Blade Housing
3	40130	EBC 35 Keeper Plate	8		EBC 35 Trimmer Blade
4	25015	EBC 35 Keeper Plate Screw (2 of)	9	25605	EBC 35/52/69 Needle Roller Bearing (2 of)
5	40660	EBC 35/52/69 Pinion	10	40620	EBC 35/52/69 Washer

EZY TRIM - Flex Shaft and Casing	
Part No	Description
EZY7501-1500	EZY TRIM Drive Cable(15mm) 1.5meters(Inner + Outer)
EZY7501-2000	EZY TRIM Drive Cable(15mm) 2meters (Inner + Outer)
EZY7401-1500	EZY TRIM Drive Cable(12mm) 1.5meters(Inner + Outer)
EZY7401-2000	EZY TRIM Drive Cable(12mm) 2meters (Inner + Outer)

## **16 Trimmer Head EZY TRIM 52 - Parts List, Maintenance and Spares Guide**

### **16.1 EZY TRIM 52 - Head Assembly Options**

**EZY6135-52 Head Assembly – includes Blade**

**a. 52 Straight Blade (25517)**



**b. 52 Hooked Blade (25518)**



IBEX INDUSTRIES

## 16.2 EZY TRIM 52 - Maintenance and Spares Guide

### EZY TRIM 52 Trimmer Head - Assemblies & Spares

Please note that this is a RECOMMENDED guide only.

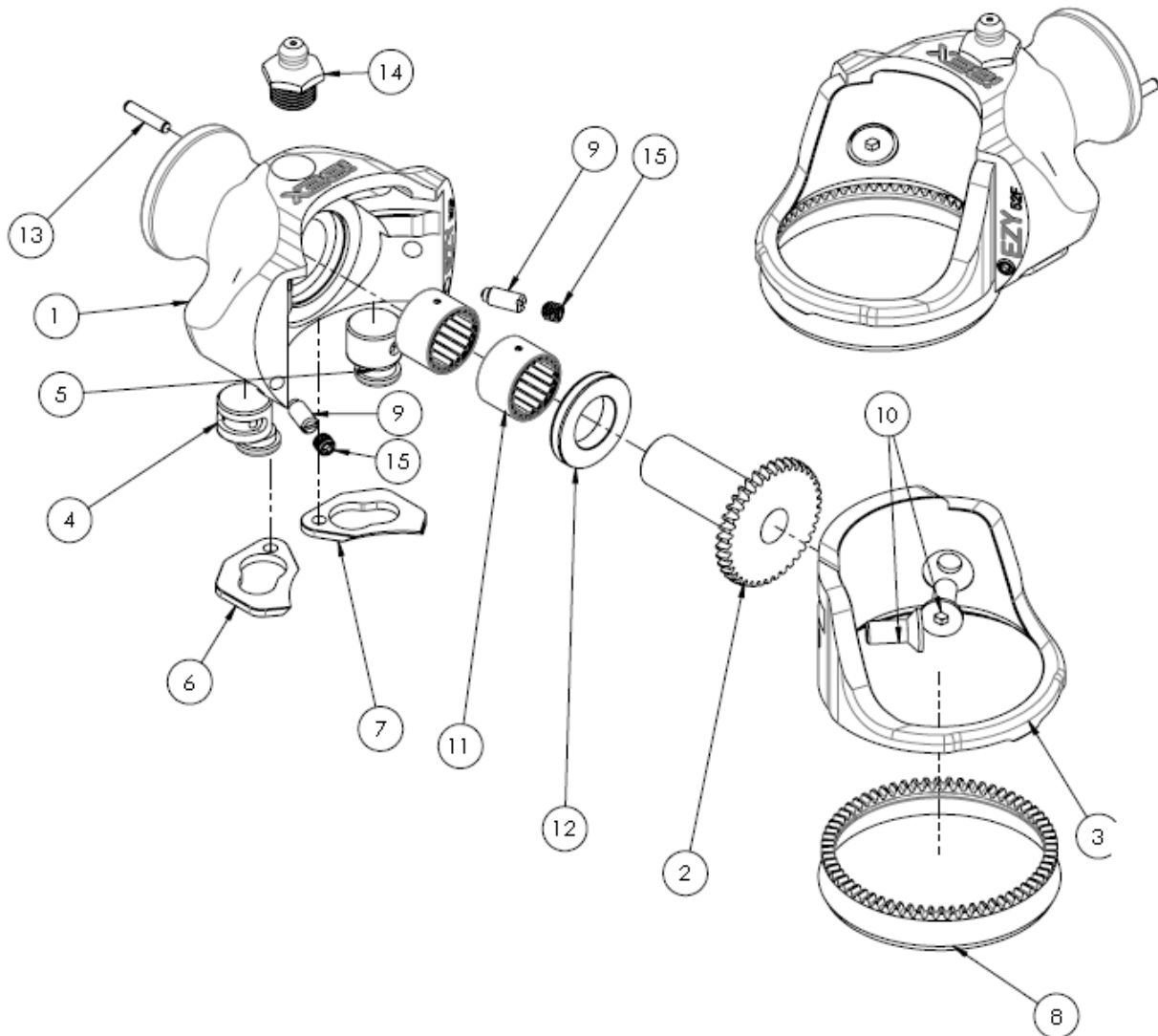
Inspect

Requirements for spares replacement vary with the level of maintenance, operator's care and types of application.

Inspect & Replace if Worn

No.	Description	Part Number	Recommended Spares Inventory Per Head	Maintenance Schedule							
				Qty	Daily	Weekly	Monthly	3 Monthly	6 Monthly	9 Monthly	12 Monthly
	<b>EZY TRIM 52 Trimmer Head</b>	<b>EZY6135-52</b>									
	<b><u>EZY TRIM 52 - Spares</u></b>										
1	Grease Cup Assembly	<b>25020</b>	1								
2	Grease Nipple	<b>EZY3001</b>	1								
3	Frame	<b>EZY6133-52</b>	**								
4	Keeper Plate - Left	<b>EZY7393-52</b>	2								
5	Keeper Plate - Right	<b>EZY7393-52B</b>	2								
6	Pinion	<b>EZY6136</b>	2-3								
8	Blade Housing	<b>EZY4400-52</b>	4								
9	Blade *	<b>see below</b>	4-5								
10	Bearing - Needle Roller	<b>40610</b>	2 to 4								
11	Washer	<b>40630</b>	1								
	<b><u>Blade Types</u></b>										
9a	* Blade - Straight	<b>25517</b>									
9b	* Blade - Hooked	<b>25518</b>									
**	Assuming standard wear and tear and no abuse, most frames will last approximately 1 1/2 to 2 years										

### 16.3 EZY TRIM 52 - Assembly Parts List



No	Part No	Description	No	Part No	Description
1	EZY6133-52	EZY TRIM Frame Assembly - 52#	8	25517	Straight Blade
2	EZY6136	EZY TRIM Pinion	9	EZY6255	Threaded Ball Catch
3	EZY4400-52	Blade Housing - 52	10	EZY3070	Counter Sunk Screws-52
4	EZY7338-L	Left Eccentric Cam	11	40610	Large EZY/EBC Bearing
5	EZY7338-R	Right Eccentric Cam	12	40630	Large EZY/EBC Washer
6	EZY7393-52L	Keeper Plate - 52 Left	13	EZY5734	Pin
7	EZY7393-52R	Keeper Plate - 52 Right	14	EZY3001	Grease Nipple
			15	EZY6256	Cup Point Set Screws

#Frame supplied with items 11 and 12 as full assembly

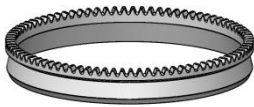
EZY TRIM - Flex Shaft and Casing	
Part No	Description
EZY7501-1500	EZY TRIM Drive Cable(15mm) 1.5meters(Inner + Outer)
EZY7501-2000	EZY TRIM Drive Cable(15mm) 2meters (Inner + Outer)
EZY7401-1500	EZY TRIM Drive Cable(12mm) 1.5meters(Inner + Outer)
EZY7401-2000	EZY TRIM Drive Cable(12mm) 2meters (Inner + Outer)

## **17 Trimmer Head EZY TRIM 69 - Parts List, Maintenance and Spares Guide**

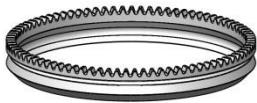
### **17.1 EZY TRIM 69 - Head Assembly Options**

**EZY6135-69 – EZY TRIM 69 Head Assembly - includes**

- a. 69 Straight Blade (EZY4391S)**



- b. 69 Hooked Blade (EZY4390H)**



## 17.2 EZY TRIM 69 - Maintenance and Spares Guide

### EZY TRIM 69 Trimmer Head - Assemblies & Spares

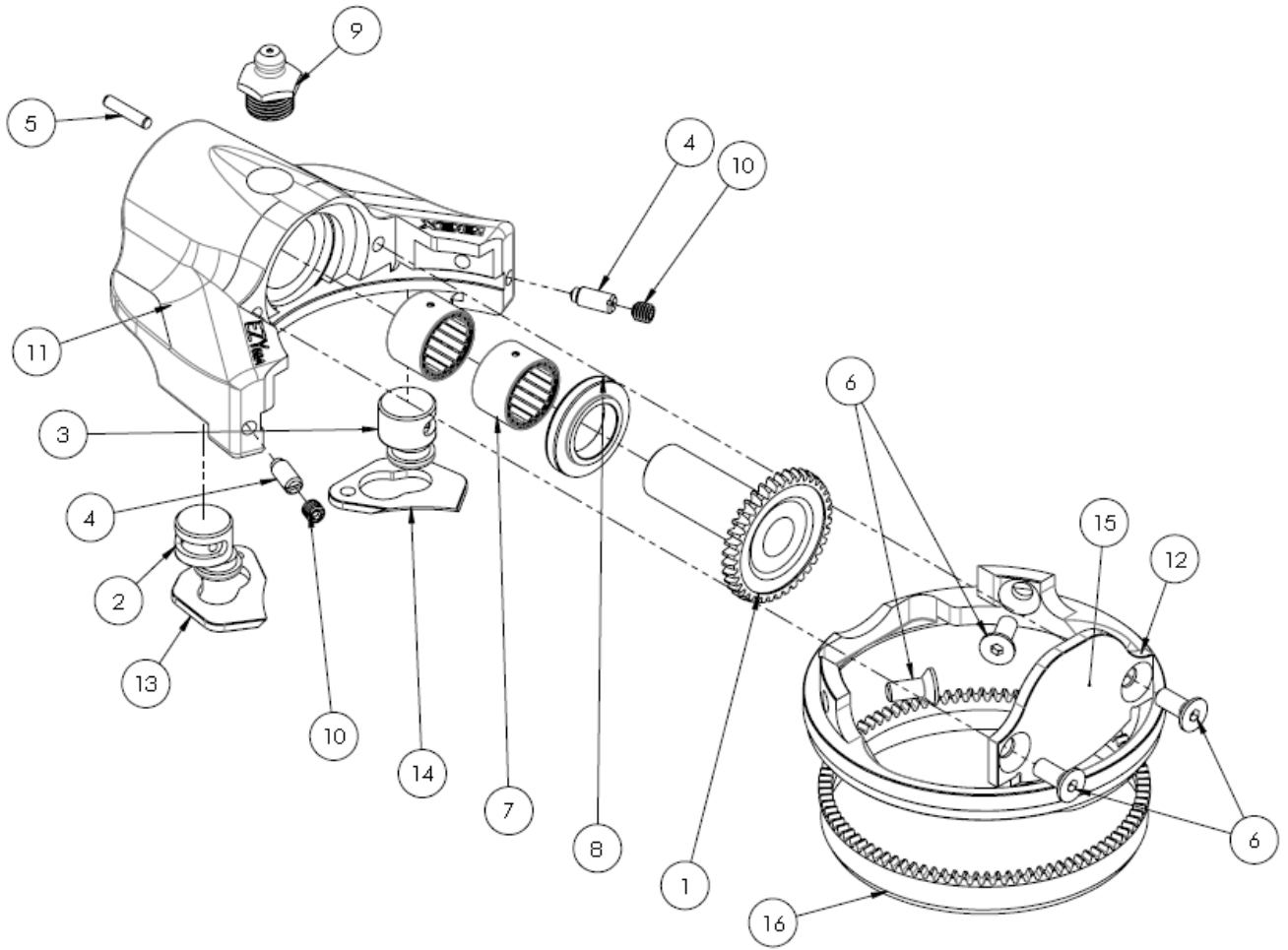
Please note that this is a RECOMMENDED guide only.

Requirements for spares replacement vary with the level of maintenance, operator's care, quality of compressed air, and types of application.

	Inspect
	Inspect & Replace if Worn

No.	Description	Part Number	Recommended Spares Inventory Per Head	Maintenance Schedule								
				Qty.	Daily	Weekly	Monthly	3 Monthly	6 Monthly	9 Monthly	12 Monthly	
	<b>EZY TRIM 69 Trimmer Head</b>	<b>EZY6135-69</b>										
	<b><u>EZY TRIM 69 - Spares</u></b>											
1	Grease Cup Assembly	<b>25020</b>	1									
2	Frame with Fittings	<b>EZY6133-69</b>	**									
3	Keeper Plate-Left	<b>EZY7393-69L</b>	2									
4	Keeper Plate -Right	<b>EZY7393-69R</b>	2									
5	Pinion	<b>EZY6136</b>	2-3									
6	Blade Housing	<b>EZY4400-69</b>	2-3									
7	Blade *	<b>see below</b>	4-5									
8	Bearing - Needle Roller Bearing (2 of)	<b>40610</b>	2 to 4									
9	Washer	<b>40630</b>	1									
	<b><u>Blade Types</u></b>											
8a	* Blade - Straight	<b>EZY4391S</b>										
8b	* Blade - Hooked	<b>EZY4390H</b>										
**	Assuming standard wear and tear and no abuse, most frames will last approximately 1 1/2 to 2 years											

### 17.3 EZY TRIM 69 - Assembly Parts List



No	Part No	Description	No	Part No	Description
1	EZY6136	EZY TRIM Pinion	9	EZY3001	Grease Nipple
2	EZY7338-L	Left Eccentric Cam	10	EZY6256	Cup Point / Nylock set screws
3	EZY7338-R	Right Eccentric Cam	11	EZY6133-69	EZY TRIM Frame Assembly -69 #
4	EZY6255	Threaded Ball Catch	12	EZY4400-69	Blade Housing - 69
5	EZY5734	Pin	13	EZY7393-69L	Keeper Plate 69-Left
6	EZY3046	Counter Sunk Screws	14	EZY7393-69R	Keeper Plate 69-Right
7	40610	Large EZY/EBC Bearings	15	EZY7412	Frame Cap
8	40630	Large EZY/EBC Washer	16	EZY4391S	69 Straight Blade

#Frame supplied with items 7 and 8 as full assembly

EZY TRIM - Flex Shaft and Casing	
Part No	Description
EZY7501-1500	EZY TRIM Drive Cable(15mm) 1.5meters(Inner + Outer)
EZY7501-2000	EZY TRIM Drive Cable(15mm) 2meters (Inner + Outer)
EZY7401-1500	EZY TRIM Drive Cable(12mm) 1.5meters(Inner + Outer)
EZY7401-2000	EZY TRIM Drive Cable(12mm) 2meters (Inner + Outer)

## 18 Trimmer Head EZY TRIM 90 - Parts List, Maintenance and Spares Guide

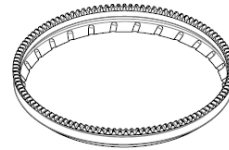
### 18.1 EZY TRIM 90 Assembly Parts List

EZY6135-90 Head Assembly – includes Blade

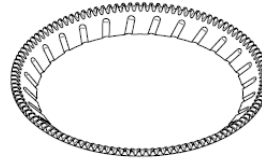
a. 90 Dished Blade  
(EZY4395D)



d. 90 Serrated Blade  
EZY 4394HS - 90 Hooked Serrated



EZY4395DS - 90 Dished Serrated



b. 90 Straight Blade  
(EZY4393S)



c. 90 Hooked Blade (EZY4394H)

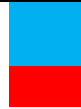




## 18.2 EZY TRIM 90 - Maintenance and Spares Guide

### EZY TRIM 90 Trimmer Head - Assemblies & Spares

Please note that this is a RECOMMENDED guide only.



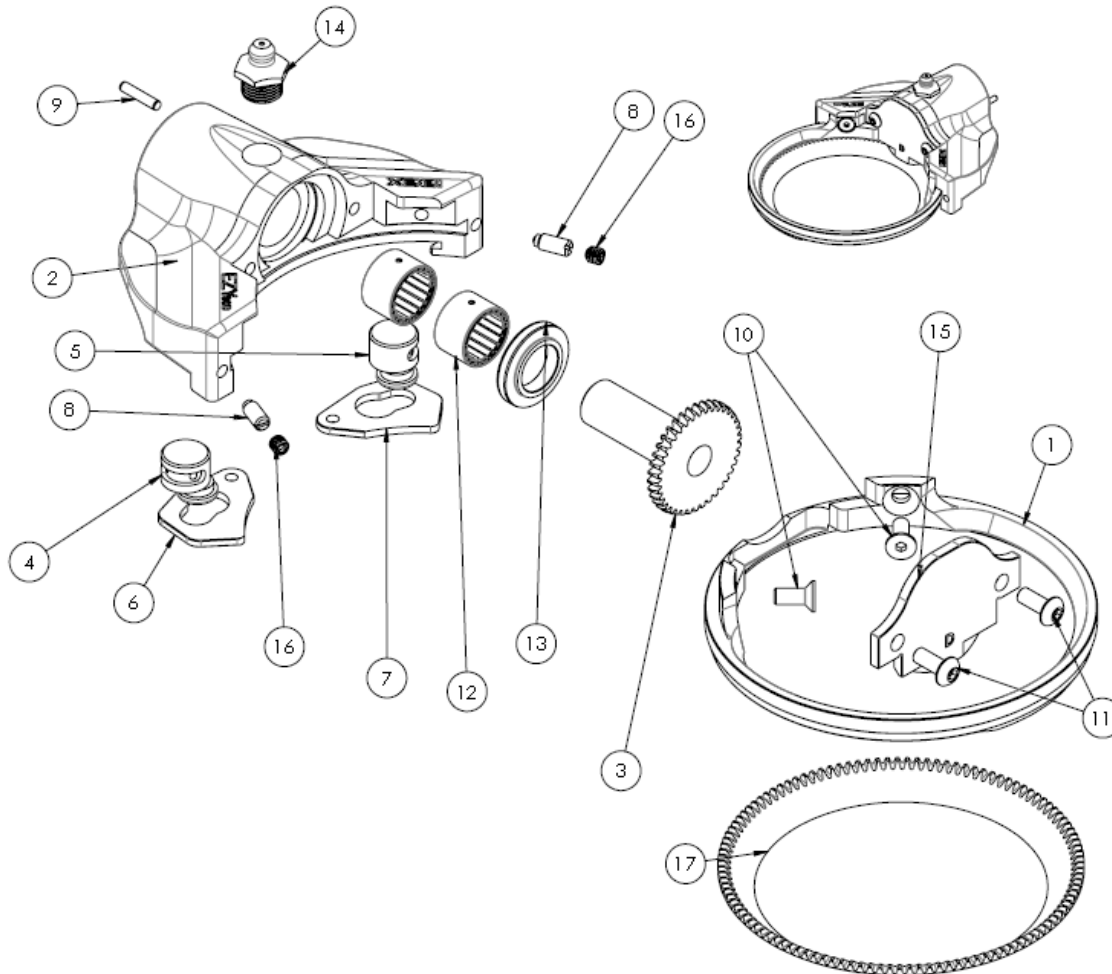
Inspect

Inspect & Replace if Worn

Requirements for spares replacement vary with the level of maintenance, operator's care, quality of compressed air, and types of application.

Number	Description	Part Number	Recom mende d Spares Invento ry Per Head	Maintenance Schedule								
				Qty	Daily	Weekl y	Monthly	3 Monthly	6 Monthly	9 Monthly	12 Monthly	
	<b>EZY TRIM 90 Trimmer Head</b>	<b>EZY6135-90</b>										
	<b>EZY TRIM 90 - Spares</b>											
1	Grease Cup Assembly	25020	1									
2	Pinion	EZY6136	2-4									
3	Frame Cap #	EZY7411	1									
4	Blade Housing	EZY4400-90	2									
6	Frame Assembly	EZY6133-90	**									
7	Keeper Plate – Left	EZY7393-90	2									
8	Keeper Plate - Right	EZY7393-90	2									
9	Button Head Screw	EZY3047	2									
10	Counter Sunk Screw	EZY3046	2									
11	Blade *	see below	4									
12	Bearing - Needle Roller Bearing (2 of)	40610	2 to 4									
13	Washer	40630	1									
11a	* Blade - Dished	EZY4395D										
11b	* Blade - Hooked	EZY4394H										
11c	* Blade - Straight	EZY4393S										
**	Assuming standard wear and tear and no abuse, most frames will last approximately 1 ½ to 2 years											
#	<b>FRAME Cap (EZY7411) on 90 Heads to be flipped when switching between Dished, Hooked and Straight Blades. (Hooked and Straight use the same side while the Dished use the other side of the Frame Cap)</b>											

### 18.3 EZY TRIM 90 Assembly Parts List



No	Part No	Description	No	Part No	Description
1	EZY4400-90	90 Blade Housing	9	EZY5734	Pin
2	EZY6133-90	EZY TRIM Frame Assembly - 90 #	10	EZY3046	Counter Sunk Screws
3	EZY6136	EZY TRIM Pinion	11	EZY3047	Button Head Screws
4	EZY7338-L	Left Eccentric Cam	12	40610	Large EZY/EBC Bearing
5	EZY7338-R	Right Eccentric Cam	13	40630	Large EZY/EBC Washer
6	EZY7393-90	Keeper Plate 90	14	EZY3001	Grease Nipple
7	EZY7393-90	Keeper Plate-90	15	EZY7411	Frame Cap - 90
8	EZY6255	Threaded Ball Catch	16	EZY6256	Cup Point set screws/Nylock screws
			17	EZY4395D	Dished Blade

#Frame supplied with items 12 and 13 as full assembly

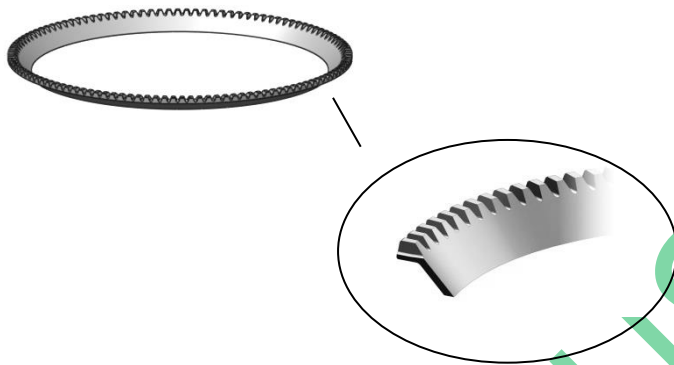
EZY TRIM - Flex Shaft and Casing	
Part No	Description
EZY7501-1500	EZY TRIM Drive Cable(15mm) 1.5meters(Inner + Outer)
EZY7501-2000	EZY TRIM Drive Cable(15mm) 2meters (Inner + Outer)
EZY7401-1500	EZY TRIM Drive Cable(12mm) 1.5meters(Inner + Outer)
EZY7401-2000	EZY TRIM Drive Cable(12mm) 2meters (Inner + Outer)

## **19 Trimmer Head EZY TRIM 128 - Parts Lists, Maintenance and Spares Guide**

### **19.1 EZY TRIM 128 Assembly Parts List**

**EZY6135-128 Head Assembly - includes Blade**

**a. 128 Dished Blade (EZY4396D)**



**b. 128 Flat Blade (EZY4397F)**



## 19.2 EZY TRIM 128 - Maintenance and Spares Guide

### EZY TRIM 128 Trimmer Head - Assemblies & Spares

Please note that this is a RECOMMENDED guide only.

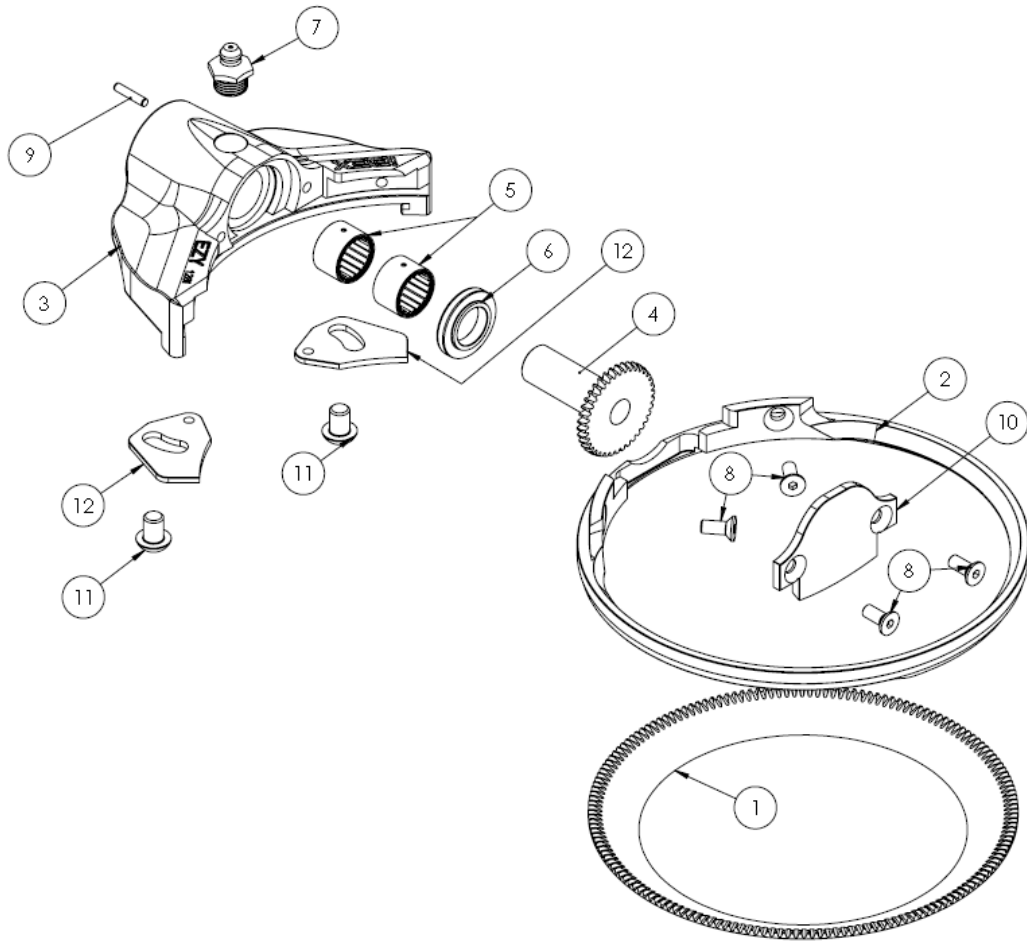
Inspect

Requirements for spares replacement vary with the level of maintenance, operator's care, and types of application.

Inspect & Replace if Worn

No.	Description	Part Number	Recommended Spares Inventory Per Head	Maintenance Schedule							
				Qty	Daily	Weekly	Monthly	3 Monthly	6 Monthly	9 Monthly	12 Monthly
	<b>EZY TRIM 128 Trimmer Head</b>	<b>EZY6135-128</b>									
	<b><u>EZY TRIM 128 - Spares</u></b>										
1	Grease Cup Assembly	25020	1								
2	Grease Nipple	EZY3001	1								
3	Pinion	EZY6136	3-4								
4	Frame Cap #	EZY7410/7413	1 #								
5	Blade Housing	EZY4400-128	2								
6	Frame	EZY6133-128	**								
7	Keeper Plate	EZY7393-128	2								
8	Counter Sunk Screw	EZY3046	4								
9	Blade *	see below	4								
10	Bearing - Needle Roller Bearing (2 of)	40610	2 to 4								
11	Washer	40630	1								
	<b><u>Blade Types</u></b>										
9a	Blade - Dished	EZY4396D									
	Blade - Flat	EZY4397F									
**	Assuming standard wear and tear and no abuse, most frames will last approximately 1 ½ to 2 years										
#	Frame Cap EZY7410 to be used with Dished blades for hot fat trimming and Frame Cap EZY7413 to be used with flat blades for cold fat trimming.										

### 19.3 EZY TRIM 128 - Assembly Parts List



No	Part No	Description	No	Part No	Description
1	EZY4396D/ EZY4397F	128 Dished/Flat Blade	7	EZY3001	Grease Nipple
2	EZY4400-128	Blade Housing - 128	8	EZY3046	Counter Sunk Screws-128
3	EZY6133-128	EZY TRIM Frame Assembly -128#	9	EZY5734	Pin
4	EZY6136	EZY TRIM Pinion	10	EZY7410 or EZY7413	Frame Cap - 128*
5	40610	Large EZY/EBC Bearing	11	EZY3045	Socket Button Screws
6	40630	Large EZY/EBC Washer	12	EZY7393-128	Keeper Plate-128 Left & Right

#Frame supplied with items 5 and 6 as full assembly

\*EZY7410 for Hot Fat Trimming (Dished Blades) or EZY7413 for Cold Fat Trimming(Flat Blades)

EZY TRIM - Flex Shaft and Casing	
Part No	Description
EZY7501-1500	EZY TRIM Drive Cable(15mm) 1.5meters(Inner + Outer)
EZY7501-2000	EZY TRIM Drive Cable(15mm) 2meters (Inner + Outer)
EZY7401-1500	EZY TRIM Drive Cable(12mm) 1.5meters(Inner + Outer)
EZY7401-2000	EZY TRIM Drive Cable(12mm) 2meters (Inner + Outer)

## 20 Optional Depth Gauge and Sharpening Steel Assemblies

Optional Depth Gauge and Sharpening Steel Assemblies **are available for the EBC & EZY TRIM 90 & 128 Trimmer Heads.**



128 Depth Gauge with Sharpening Steel  
Assembly

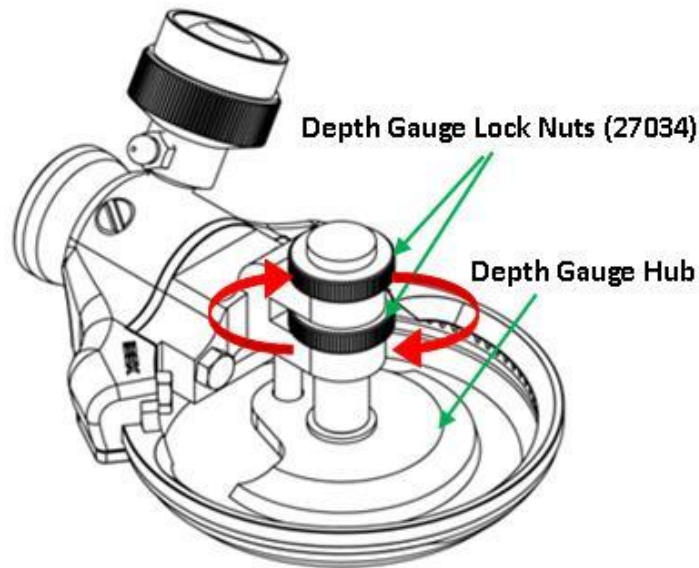


128 Sharpening Steel Assembly

IBEX INDUSTRIES

Part No.	Type	Application	EBC Trimmer Head
40470	90 Depth Gauge with Fat Hub	Fat trimming	Fits 90 Trimmer Heads – EBC & EZY TRIM
40490	90 Depth Gauge with Fat Hub & Sharpening Steel		
27038	90 Depth Gauge White Disc type Fat Hub		
27038C	90 Depth Gauge – Fat Hub		
27038H	90 Depth Gauge White Hooked type Fat Hub		
27544	90 Depth Gauge Blue Food grade & Metal detectable Fat Hub		
40460	90 Depth Gauge with Skin Hub	Skin removal	
40480	90 Depth Gauge with Skin Hub & Sharpening Steel		
27039	90 Depth Gauge White Disc Type Skin Hub		
27039C	90 Depth Gauge – Skin Hub		
27039H	90 Depth Gauge White Hooked type Skin Hub		
27544	90 Depth Gauge Blue Food grade & Metal detectable Skin Hub		
40495	90 Sharpening Steel Assembly		
40570	128 Depth Gauge with Fat Hub	Fat trimming	Fits 128 Trimmer Heads – EBC & EZY TRIM
40590	128 Depth Gauge with Fat Hub & Sharpening Steel		
27538	128 Depth Gauge White Disc type Fat Hub		
27538C	128 Depth Gauge – Fat Hub		
27538H	128 Depth Gauge White Hooked type Fat Hub		
27542	128 Depth Gauge Blue, Food grade & Metal detectable Fat Hub		
40560	128 Depth Gauge with Skin Hub	Skin removal	
40580	128 Depth Gauge with Skin Hub & Sharpening Steel		
27539	128 Depth Gauge White Disc type Skin Hub		
27539C	128 Depth Gauge – Skin Hub		
27039H	128 Depth Gauge White Hooked type Skin Hub		
27545	128 Depth Gauge Blue, Food grade & Metal detectable Skin Hub		
40595	128 Sharpening Steel Assembly		

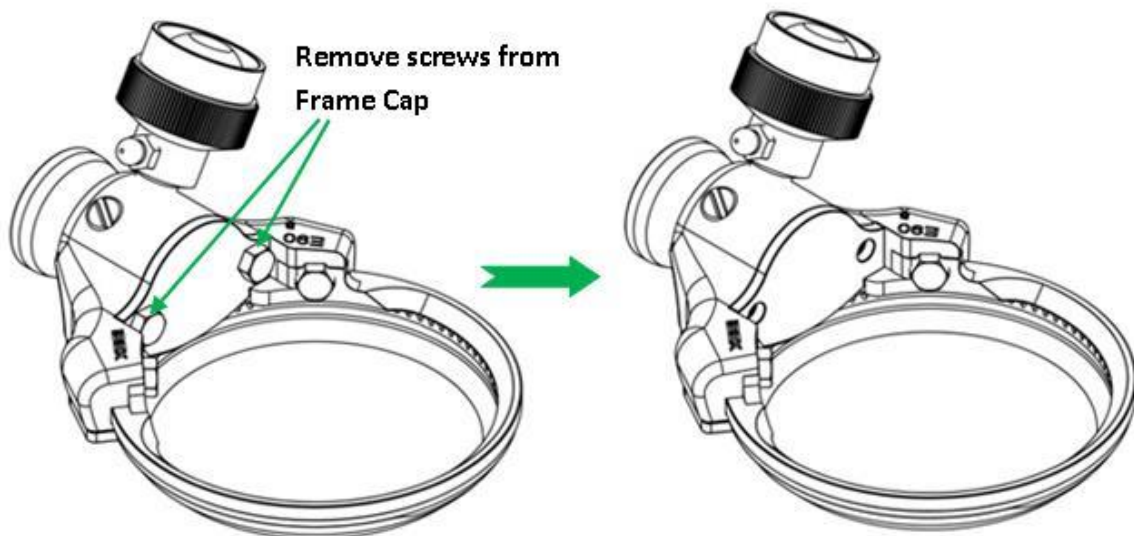
## 20.1 Adjusting the Depth Gauge



The Depth Gauge Hub, which controls the amount of product trimmed, can be height adjusted by turning the Depth Gauge Lock Nuts according to the required thickness of the product cut.

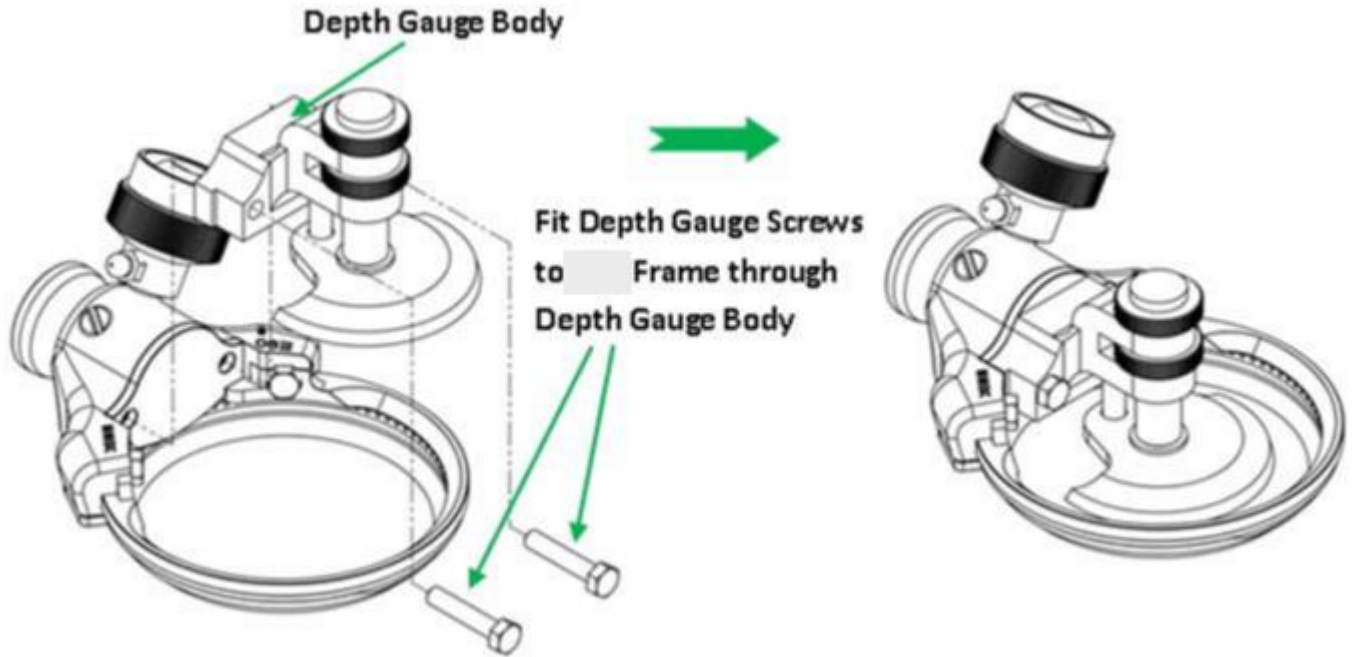
## 20.2 Fitting Depth Gauge Assembly (with or without Sharpening Steel Assembly) to the Trimmer Head

1. Remove the two screws from the Frame Cap



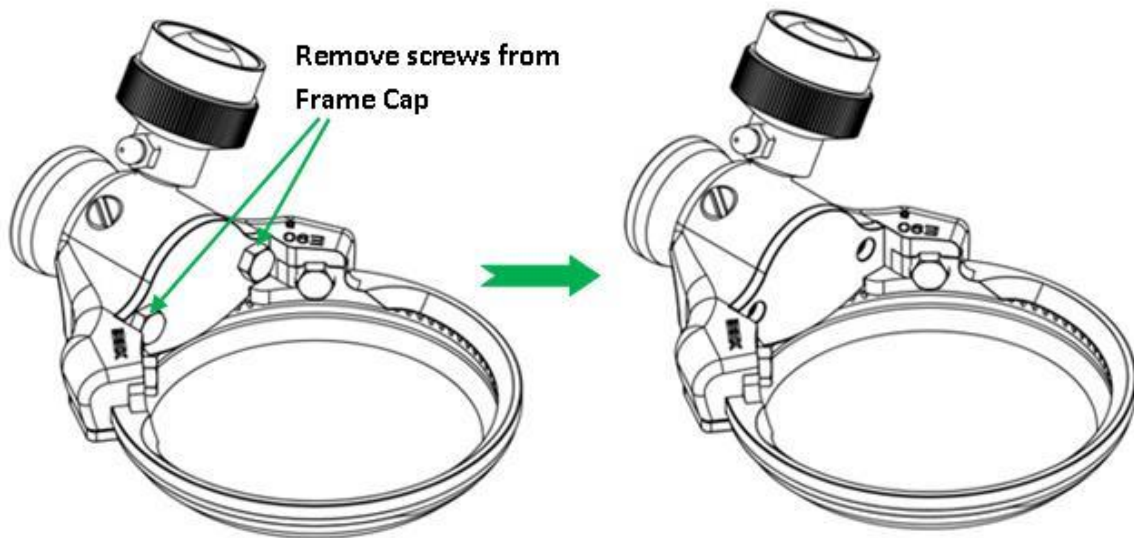


2. Screw on the two longer Depth Gauge Screws (40652 for EBC & EZY3005 for EZY TRIM) to the Frame through the Depth Gauge Body

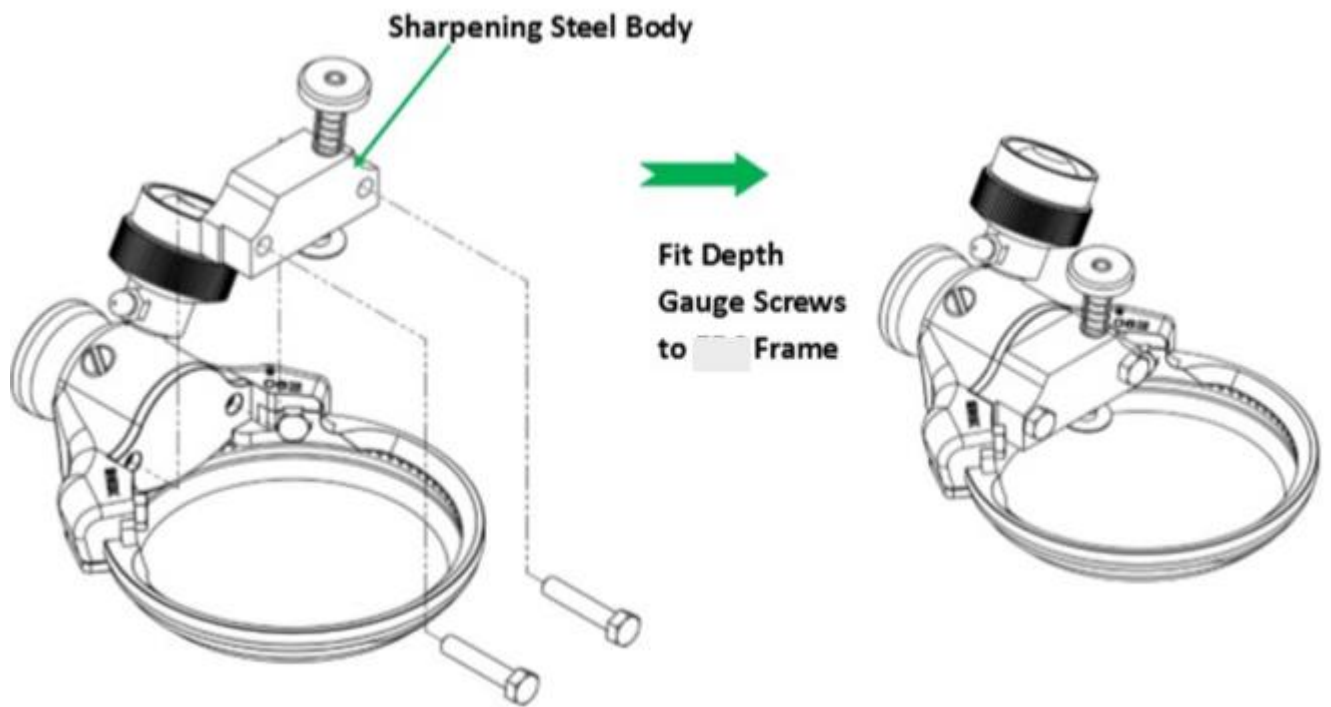


### 20.3 Fitting Sharpening Pin Assembly to the Trimmer Head

1. Remove the two Screws from the Frame Cap



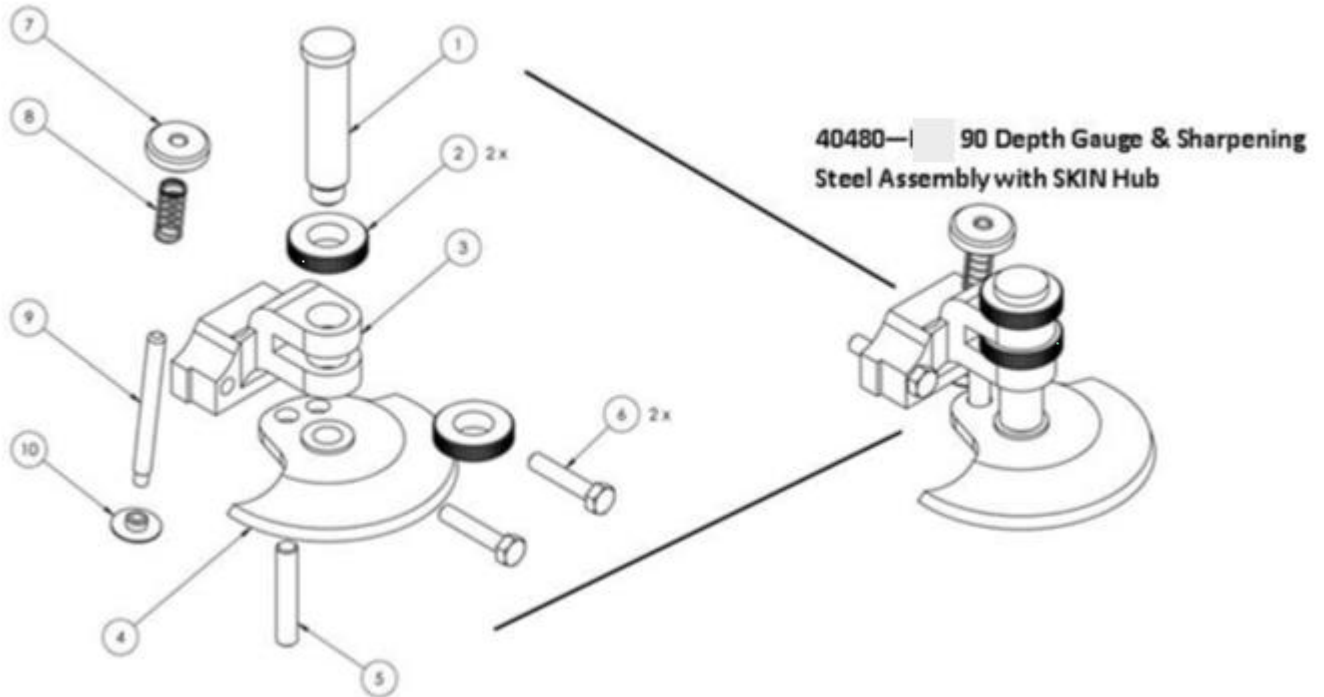
2. Screw on the two longer Depth Gauge Screws (40652 for EBC & EZY3005 for EZY TRIM) to the Frame through the Sharpening Steel Body



IBEX INDUSTRIES

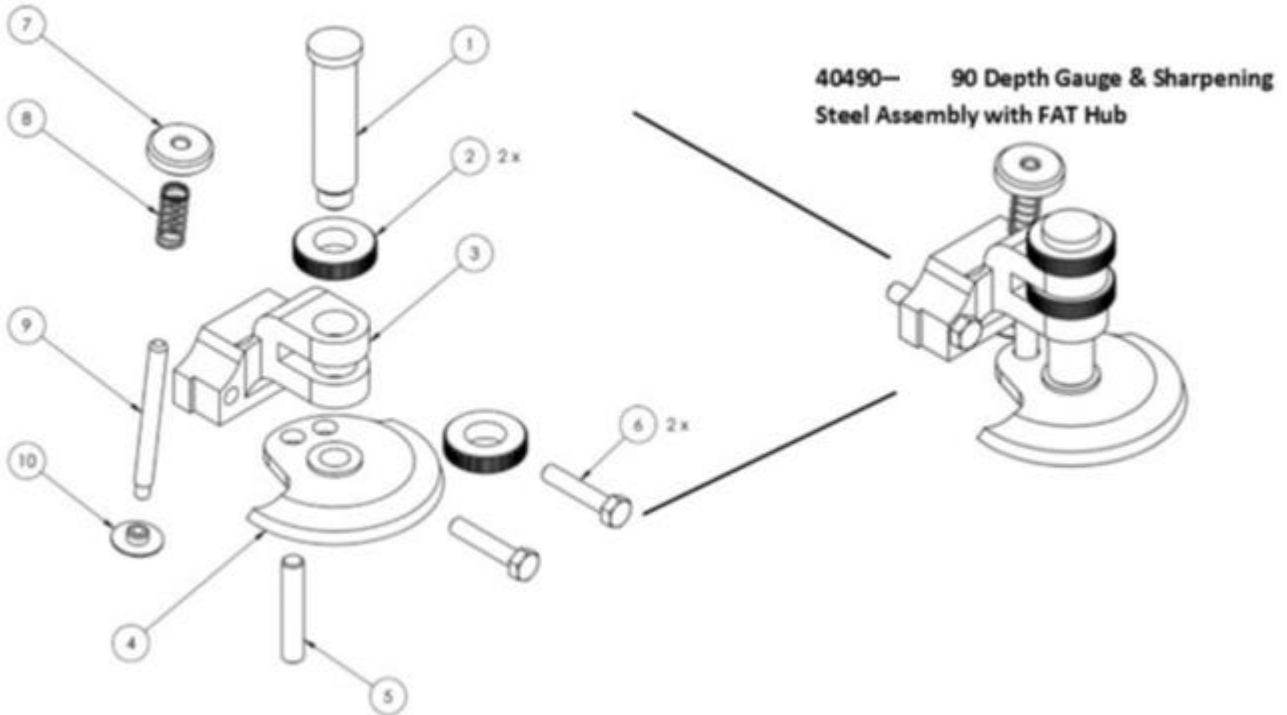
## 21 90 Degree Depth Gauge & Sharpening Steel Assemblies Parts Lists

### 21.1 90 Degree Depth Gauge & Sharpening Steel Assembly – SKIN Hub (40480) Parts List



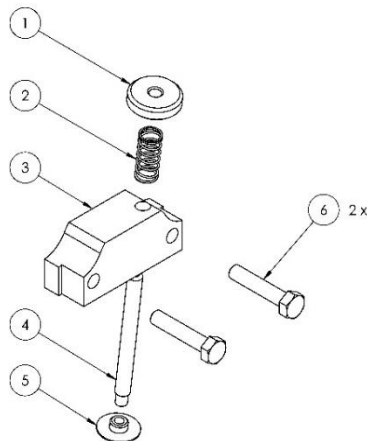
No	Part No.	Description	No	Part No.	Description
1	27033	Depth Gauge Control Shaft	6	40652 / EZY3005	Depth Gauge Screws (2 of)
2	27034	Depth Gauge Lock Nut (2 of)	7	27045	Sharpening Steel Knob
3	40443	90 Degree Depth Gauge Body	8	27043	Sharpening Steel Spring
4		90 Degree Depth Gauge SKIN Hub (27039 or 27039H or 27545)	9	27044	Sharpening Steel Shaft
5	27036	Depth Gauge Pin Guide	10	27046	90 Sharpening Steel

### 21.2 90 Depth Gauge & Sharpening Steel Assembly – FAT Hub (40490) Parts List



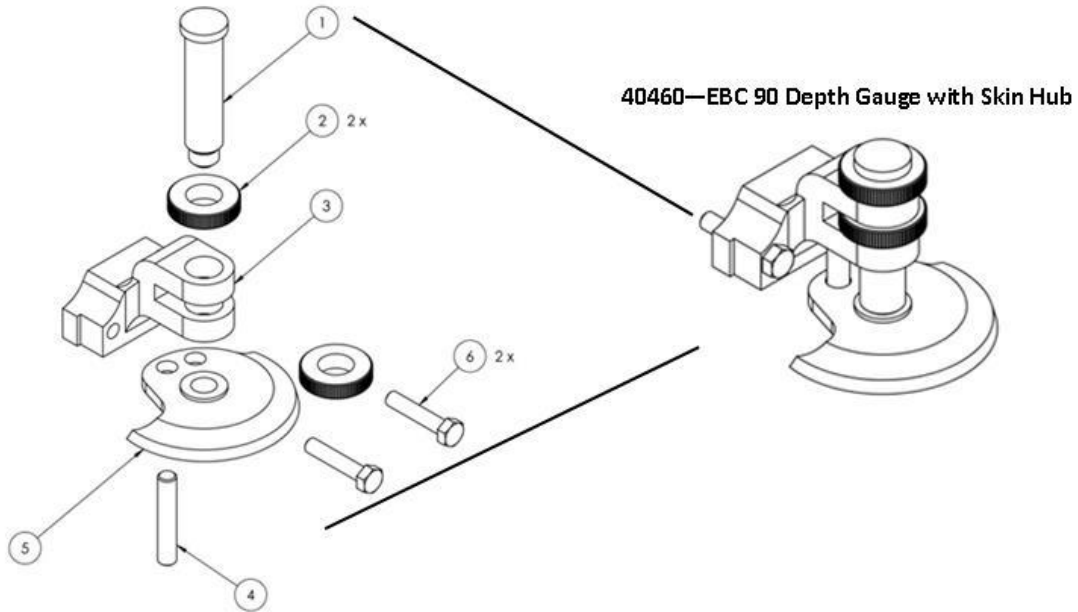
No	Part No.	Description	No	Part No.	Description
1	27033	Depth Gauge Control Shaft	6	40652 / EZY3005	Depth Gauge Screws (2 of)
2	27034	Depth Gauge Lock Nut (2 of)	7	27045	Sharpening Steel Knob
3	40443	90 Depth Gauge Body	8	27043	Sharpening Steel Spring
4		90 Depth Gauge FAT Hub (27038 or 27038H or 27544)	9	27044	Sharpening Steel Shaft
5	27036	Depth Gauge Pin Guide	10	27046	90 Sharpening Steel

### 21.3 90 Sharpening Steel Assembly (40495) Parts List



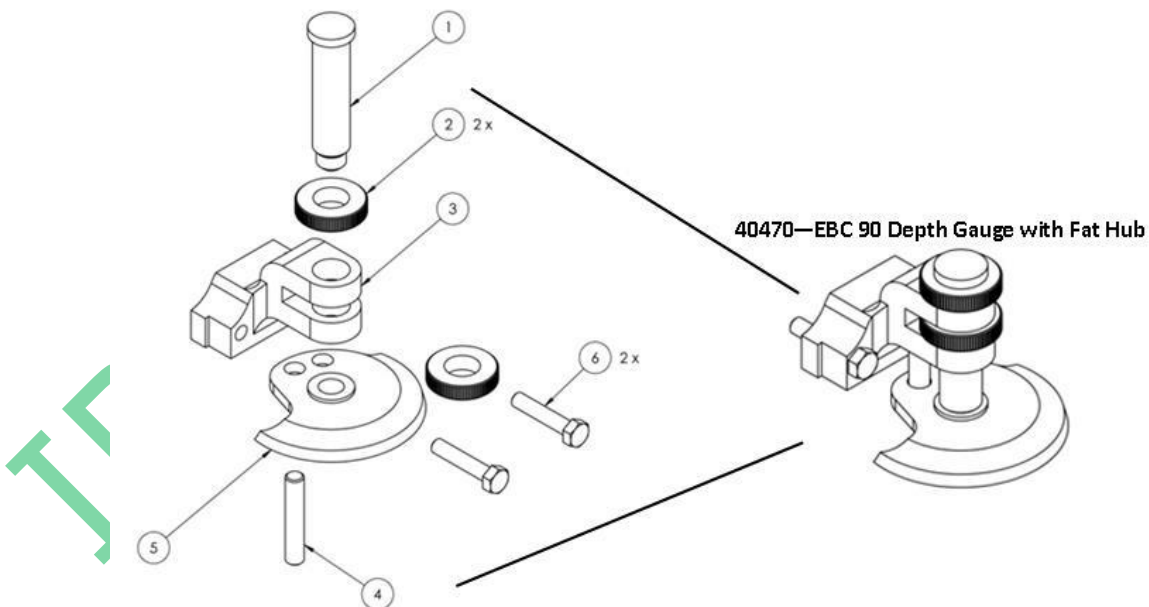
No	Part No.	Description	No	Part No.	Description
1	27045	Sharpening Steel Knob	4	27044	Sharpening Steel Shaft
2	27043	Sharpening Steel Spring	5	27046	90 Sharpening Steel
3	40444	90 Sharpening Steel Body	6	40652/ EZY3005	Depth Gauge Screws (2 of)

### 21.4 90 Degree Depth Gauge with SKIN Hub (40460) Parts List



No	Part No.	Description	No	Part No.	Description
1	27033	Depth Gauge Control Shaft	4	27036	Depth Gauge Pin Guide
2	27034	Depth Gauge Lock Nut (2 of)	5		90 Degree Depth Gauge SKIN Hub (27039 or 27039H or 27545)
3	40443	EBC 90 Degree Depth Gauge Body	6	40652 / EZY3005	Depth Gauge Screws (2 of)

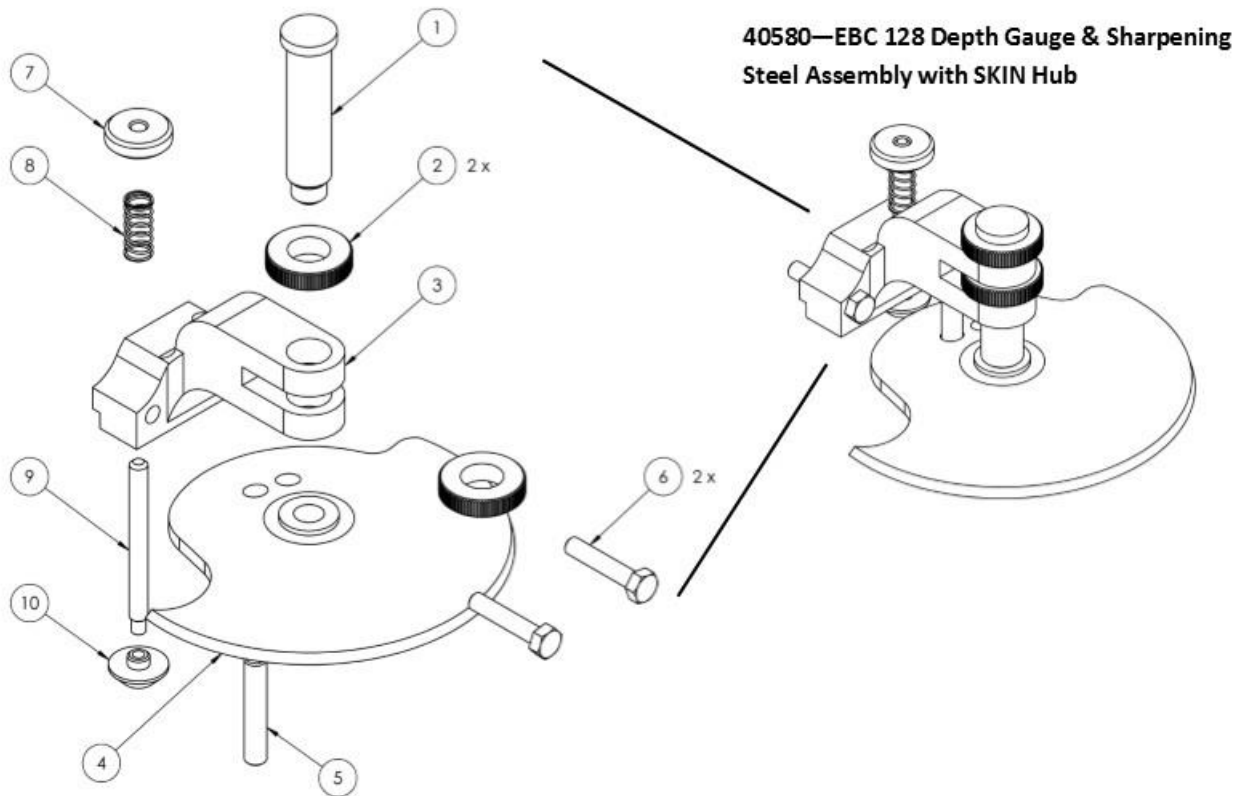
### 21.5 90 Degree Depth Gauge with FAT Hub (40470) Parts List



No	Part No.	Description	No	Part No.	Description
1	27033	Depth Gauge Control Shaft	4	27036	Depth Gauge Pin Guide
2	27034	Depth Gauge Lock Nut (2 of)	5		90 Degree Depth Gauge FAT Hub (27038 or 27038H or 27544)
3	40443	90 Degree Depth Gauge Body	6	40652 / EZY3005	Depth Gauge Screws (2 of)

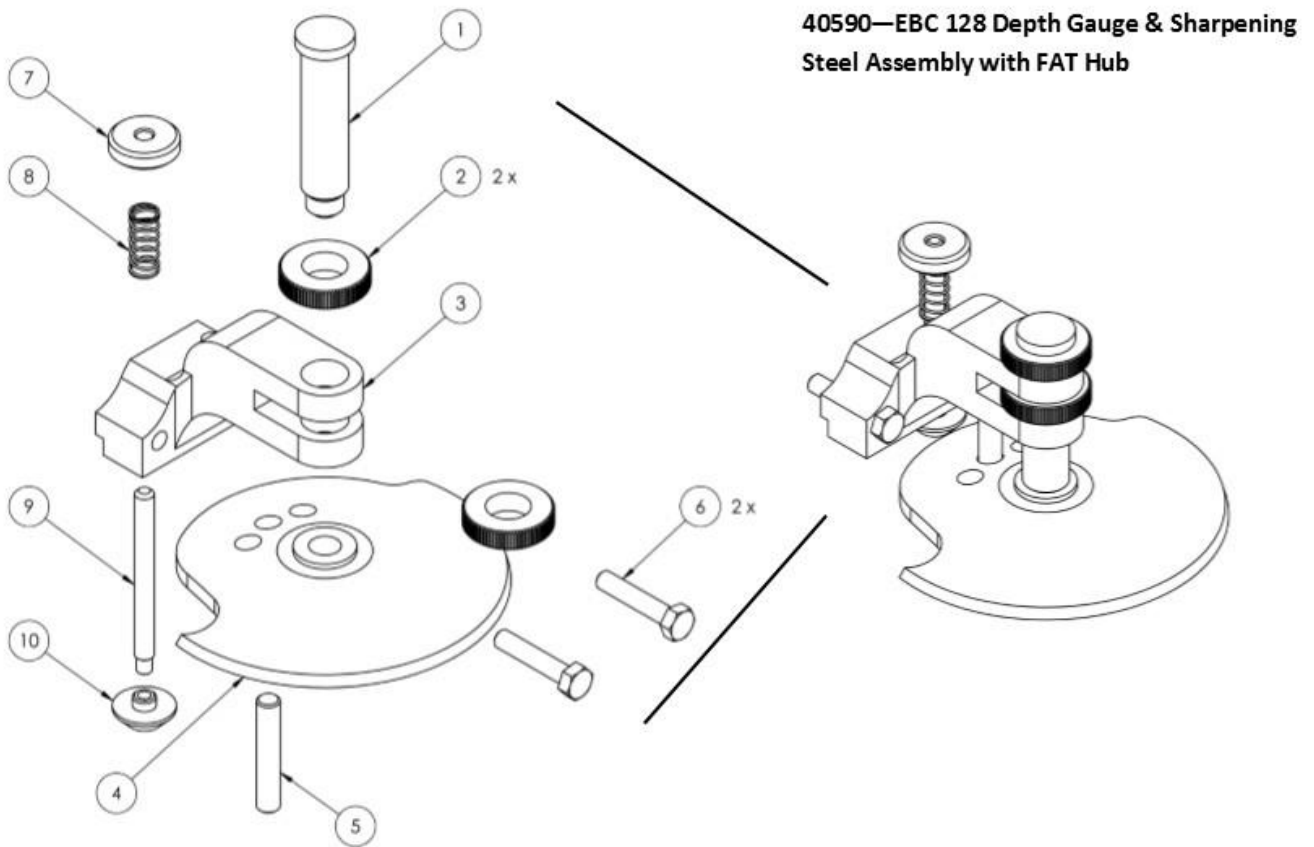
## 22 128 Depth Gauge & Sharpening Steel Assemblies Parts Lists

### 22.1 128 Depth Gauge & Sharpening Steel Assembly – SKIN Hub (40580) Parts List



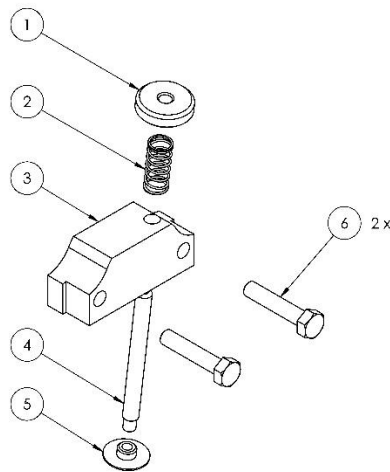
No	Part No.	Description	No	Part No.	Description
1	27033	Depth Gauge Control Shaft	6	40652 / EZY3005	Depth Gauge Screws (2 of)
2	27034	Depth Gauge Lock Nut (2 of)	7	27045	Sharpening Steel Knob
3	40543	128 Depth Gauge Body	8	27043	Sharpening Steel Spring
4		128 Depth Gauge SKIN Hub (27539 or 27539H or 27543)	9	27044	Sharpening Steel Shaft
5	27036	Depth Gauge Pin Guide	10	27546	128 Sharpening Steel

## 22.2 128 Depth Gauge & Sharpening Steel Assembly – FAT Hub (40590) Parts List



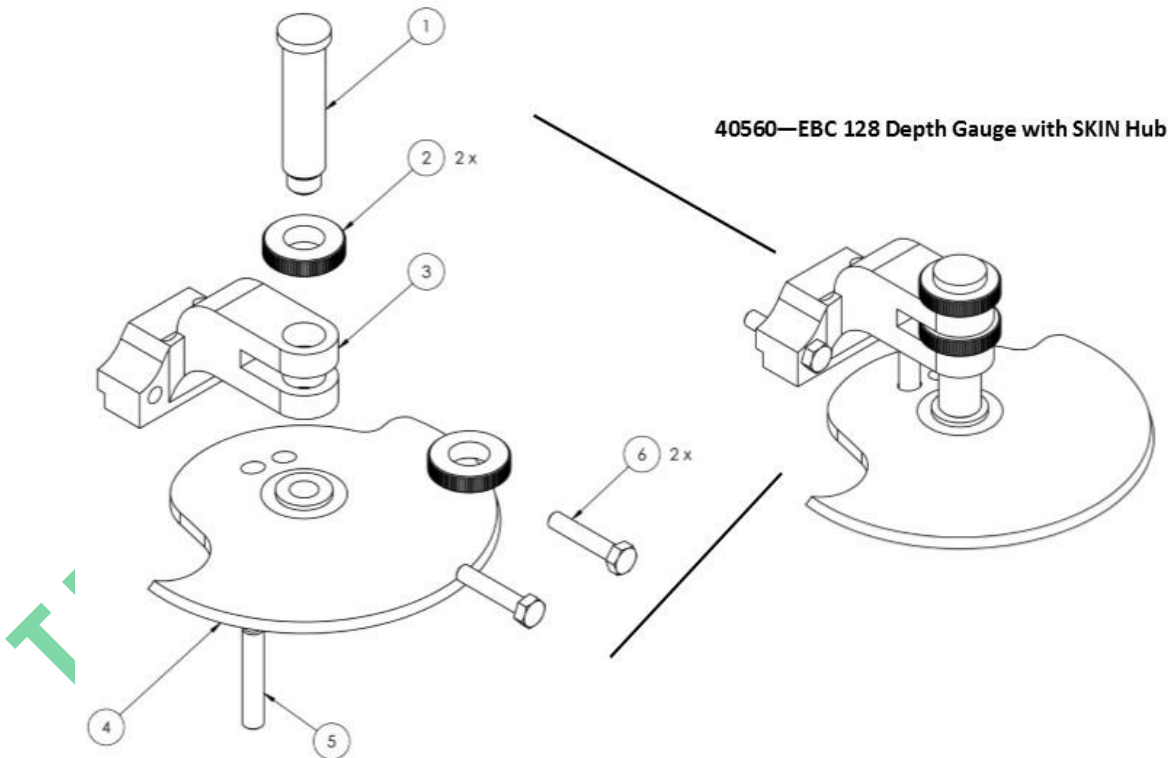
No	Part No.	Description	No	Part No.	Description
1	27033	Depth Gauge Control Shaft	6	40652 / EZY3005	Depth Gauge Screws (2 of)
2	27034	Depth Gauge Lock Nut (2 of)	7	27045	Sharpening Steel Knob
3	40543	EBC 128 Depth Gauge Body	8	27043	Sharpening Steel Spring
4		128 Depth Gauge FAT Hub (27538 or 27538H or 27542)	9	27044	Sharpening Steel Shaft
5	27036	Depth Gauge Pin Guide	10	27546	128 Sharpening Steel

### 22.3 EBC 128 Sharpening Steel Assembly (40595) Parts List



No	Part No.	Description	No	Part No.	Description
1	27045	Sharpening Steel Knob	4	27044	Sharpening Steel Shaft
2	27043	Sharpening Steel Spring	5	27546	128 Sharpening Steel
3	40544	EBC 128 Sharpening Steel Body	6	40652 / EZY3005	Depth Gauge Screws (2 of)

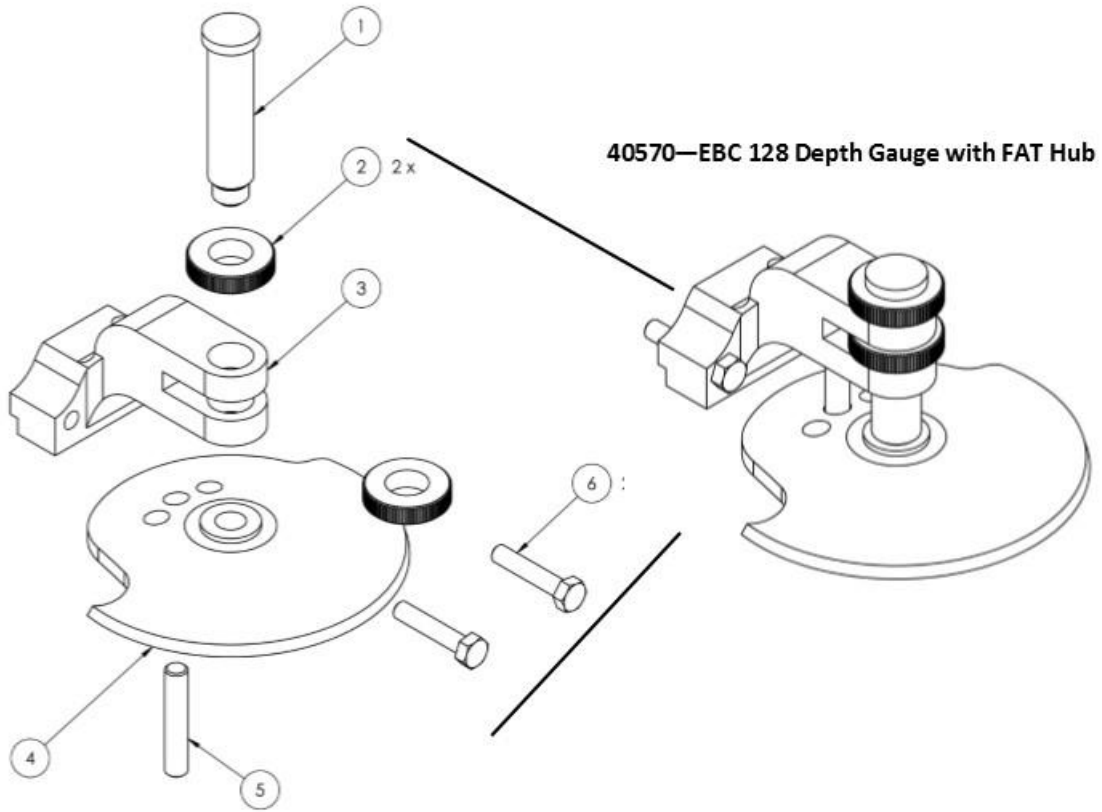
### 22.4 EBC 128 Depth Gauge with SKIN Hub (40560) Parts List



No	Part No.	Description	No	Part No.	Description
1	27033	Depth Gauge Control Shaft	4		128 Depth Gauge SKIN Hub (27539 or 27539H or 27543)
2	27034	Depth Gauge Lock Nut (2 of)	5	27036	Depth Gauge Pin Guide
3	40543	EBC 128 Depth Gauge Body	6	40652 / EZY3005	Depth Gauge Screws (2 of)

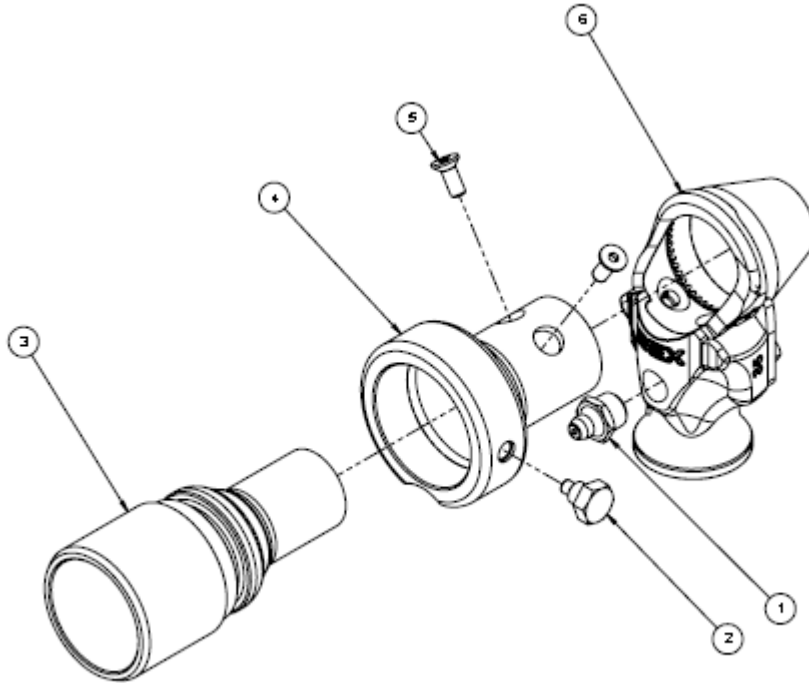


**22.5 EBC 128 Depth Gauge with FAT Hub (40570) Parts List**



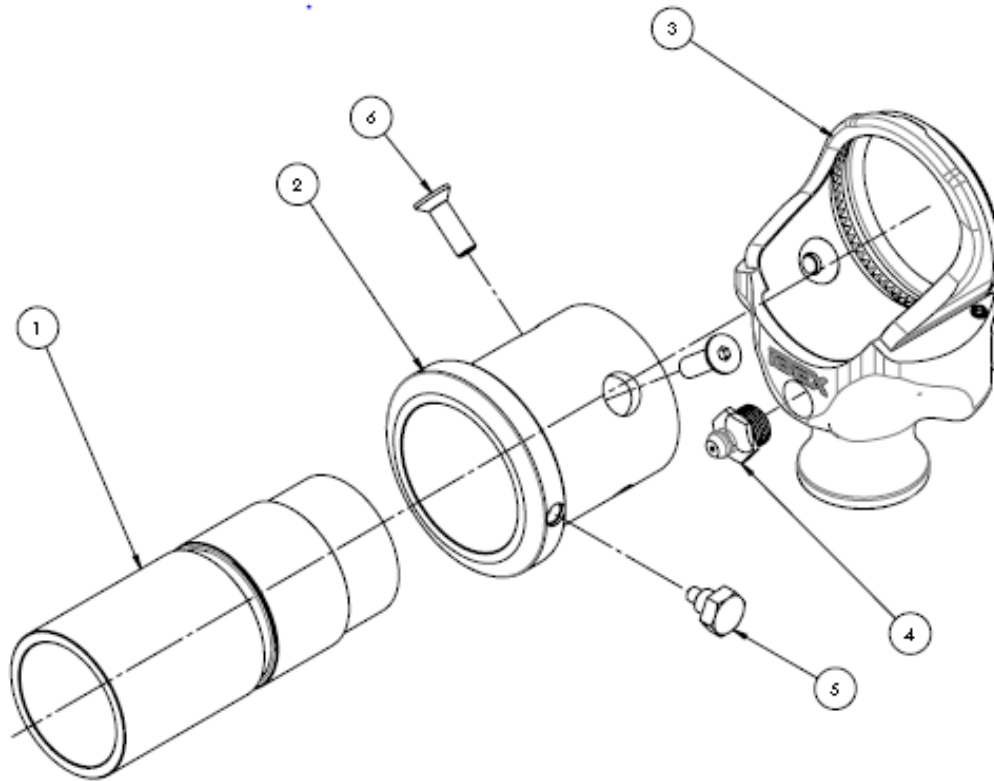
No	Part No.	Description	No	Part No.	Description
1	27033	Depth Gauge Control Shaft	4		128 Depth Gauge FAT Hub (27538 or 27538H or 27542)
2	27034	Depth Gauge Lock Nut (2 of)	5	27036	Depth Gauge Pin Guide
3	40543	EBC 128 Depth Gauge Body	6	40652 / EZY3005	Depth Gauge Screws (2 of)

## 23 Vacuum Attachment Assembly for 35 Heads(40123) – Parts List



No	Part No.	Description	No	Part No.	Description
1	25041	Grease Nipple	4	40121	35 Vacuum Bracket
2	25034	Vacuum Head Bolt	5	25012	M4X10 CSK Screw
3	40122	35 Vacuum Nozzle	6	40100C	35 Trimmer Head with Conical Blade

## 24 Vacuum Attachment Assembly for 52 Heads(EZY40226) – Parts List



No	Part No.	Description	No	Part No.	Description
1	EZY40222	52 Vacuum Nozzle	4	EZY3001	Grease Nipple
2	EZY40221	52 Vacuum Bracket	5	25034	Vacuum Head Bolt
3	EZY6135-52	EZY TRIM 52 Head Assembly	6	40223	Countersunk screw

## About IBEX

IBEX is a manufacturing and product development company with over 20 years experience in providing practical solutions in demanding production environments. Specializing in products for the meat processing industry, IBEX is a global company with offices in New Zealand, Australia, Europe and South America.

IBEX's strength has always been service-support and offering quality products which meet and exceed customer expectations, which represent excellent value and that draw on vast industry and product knowledge, coupled with the emphasis on customer support, IBEX can offer specific solutions that are unparalleled in the industry.

An important feature of IBEX is the team of specialist staff. IBEX have assembled a team with practical experience, expertise and the ability to understand the specific subtleties of each industry we are involved in.

Furthermore our network of associates and close co-operation with customers ensure that we maintain an excellent professional knowledge base that allows us to better serve the industry, through product development and innovation.



## Our Philosophy

Since inception IBEX's philosophy is to work in partnership with manufacturers and customers, providing the right solution for each specific application and offering design and value engineering to improve products and systems for changing applications.

IBEX prides itself in bringing to market the best available products from within its field, ensuring that when a company is purchasing from IBEX, the product has already gone through rigorous testing and evaluation.

A commitment to service and support is an ethos that is ingrained into the company.

