



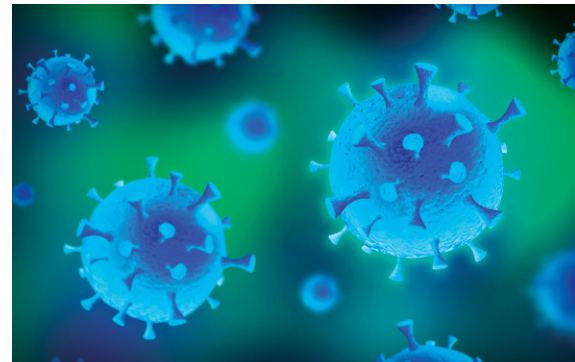
# Single-use without a Single Compromise





## GlideScope Spectrum QC Single-use Video Laryngoscopes

GlideScope® Spectrum™ QC single-use video laryngoscopes, designed for first pass success, feature the latest advances in camera technology and video laryngoscope design to enable quick intubation across a wide range of patient types and clinical settings.





## Single-use Convenience

Minimize the risk of cross-contamination with single-use video laryngoscopes.

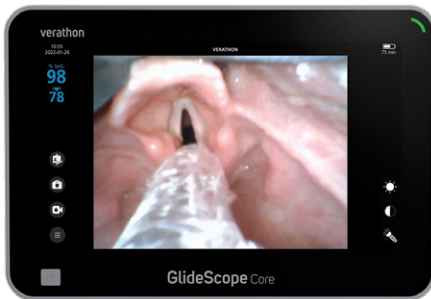
- Fully disposable blade and handle helps reduce risk of cross-contamination
- Single-use means easier access when you need it



## Proven Clinical Performance

GlideScope® hyperangulated video laryngoscopes enable improved laryngeal exposure<sup>1</sup>, lower lift force on patients<sup>2</sup>, and higher first-pass success rates.<sup>3,4</sup>

- Improves first-pass success intubation rates compared to direct laryngoscopy<sup>3,4</sup>
- Enables C/L I & II views in 99% of patients studied<sup>1</sup>



## Enhanced Airway Views

Spectrum™ QC video laryngoscopes incorporate imaging improvements that increase sharpness, vividness and field of view.

- Expands visualization in the airway with 14% improved field of view<sup>5</sup>
- Helps you distinguish anatomical detail with 50% sharper, more vivid images<sup>6</sup>
- More light where you need it with 30% brighter LEDs for Mac and 100% brighter LEDs for Miller<sup>7</sup>

1. Cooper RM, Pacey JA, Bishop MJ, McCluskey SA. Early clinical experience with a new videolaryngoscope (GlideScope) in 728 patients. *Can J Anaesth*. 2005 Feb;52(2):191-8.
2. Measurement of forces applied during Macintosh direct laryngoscopy compared with GlideScope video laryngoscopy. Russell T, Khan S, Elman J, Katznelson R, Cooper RM. *Anaesthesia*. 2012 Jun; 67(6):626-31..
3. Silverberg, Michael J., et al. "Comparison of Video Laryngoscopy Versus Direct Laryngoscopy During Urgent Endotracheal Intubation: A Randomized Controlled Trial." *Critical Care Medicine* 43.3 (2014): 636-641.
4. Park R, Peyton JM, Fiadjoe JE, Hunyady AI, Kimball T, Zurakowski D, Kovatsis PG; PeDI Collaborative Investigators; PeDI collaborative investigators. The efficacy of GlideScope® videolaryngoscopy compared with direct laryngoscopy in children who are difficult to intubate: an analysis from the paediatric difficult intubation registry. *Br J Anaesth*. 2017 Nov 1;119(5):984-992
5. Comparing Spectrum QC Hyperangle/Mac to Spectrum HDMI LoPro/Mac; vertical field of view.
6. Comparing Spectrum QC Hyperangle/Mac 3 & 4 versus Spectrum LoPro/Mac 3 & 4
7. Comparing Spectrum QC Mac/Miller versus Spectrum HDMI Mac/Miller

**COVID-19 Airway Management Guidelines recommend: "Laryngoscopy should be undertaken with the device most likely to achieve prompt first-pass success in that operators hands ... in most fully trained airway managers this is likely to be a video laryngoscope."**

Cook TM, El-Boghdady K, McGuire B, McNarry AF, Patel A, Higgs A. Consensus guidelines for managing the airway in patients with COVID-19: Guidelines from the Difficult Airway Society, the Association of Anaesthetists the Intensive Care Society, the Faculty of Intensive Care Medicine and the Royal College of Anaesthetists. *Anaesthesia*. 2020 Jun;75(6):785-799.



# Innovative Form and Function

Spectrum™ QC single-use video laryngoscopes feature innovative magnetic QuickConnect™ technology enabling improved workflow and faster connections.



## Magnetic QuickConnect

Improves workflow and connectivity

50% Greater

Retention Force

at the cable connector<sup>1</sup>



## Low-profile Design

Designed to decrease lift force on patients<sup>2</sup> and improve view of the glottis<sup>3</sup>



See GlideScope®  
Spectrum QC in action

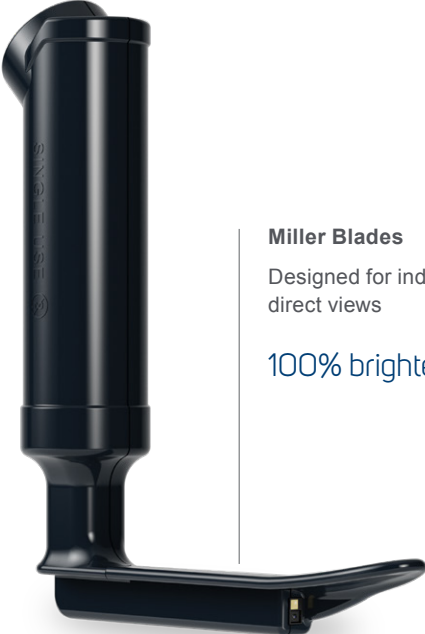
1. Comparing Spectrum QC versus Spectrum HDMI
2. Measurement of forces applied during Macintosh direct laryngoscopy compared with GlideScope video laryngoscopy. Russell T, Khan S, Elman J, Katznelson R, Cooper RM. Anaesthesia. 2012 Jun; 67(6):626-31. doi: 10.1111/j.1365-2044.2012.07087.x. Epub 2012 Feb 21.
3. Cooper RM, Pacey JA, Bishop MJ, McCluskey SA. Early clinical experience with a new videolaryngoscope (GlideScope) in 728 patients. Can J Anaesth. 2005 Feb;52(2):191-8.
4. Comparing Spectrum Mac/Miller to Spectrum QC Mac/Miller
5. Comparing Spectrum LoPro/Mac to Spectrum QC Hyperangle/Mac
6. Comparing Spectrum LoPro/Mac 3 & 4 to Spectrum QC Hyperangle/Mac 3 & 4

# Brilliant Image Quality

Spectrum™ QC video laryngoscopes provide visualization improvements that empower clinicians to act with confidence in routine and emergent situations.

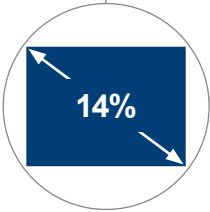


**Mac Blades**  
Designed for indirect and direct views  
30% brighter LED<sup>4</sup>

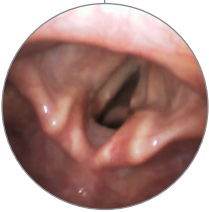


**Miller Blades**  
Designed for indirect and direct views  
100% brighter LED<sup>4</sup>

**Anti-fog Performance**  
Resists lens fogging for consistently clear airway views



**Expanded Field of View**  
14% greater field of view<sup>5</sup>



**Dynamic Light Control®**  
Optimizes image quality and brightness at the vocal cords



**Improved Imaging**  
50% sharper, more vivid images<sup>6</sup>

# An Extensive Portfolio of Single-use Video Laryngoscopes

GlideScope® Spectrum™ QC single-use video laryngoscopes feature the latest advances in lighting and camera technology to enable quick intubation across a wide range of patient types and clinical settings. Choose from a broad portfolio of angulated and direct style blades.

## Hyperangulated Video Laryngoscopes

Hyperangulated video laryngoscopes have been shown to enable improved laryngeal views<sup>1</sup> and less lift force on patients<sup>2</sup>. Low profile blades improve maneuverability and working space in the patient's mouth.



Hyperangle S1  
0270-1089



Hyperangle S2  
0270-1090



Hyperangle S2.5  
0270-1091



Hyperangle S3  
0270-1083



Hyperangle S4  
0270-1084

## Mac and Miller Video Laryngoscopes

Mac and Miller video laryngoscopes combine the familiarity of direct laryngoscope-style blades with the confidence of video laryngoscopes. These blades offer simultaneous direct and indirect views, enabling advanced teaching techniques.



Miller S0  
0270-1087



Miller S1  
0270-1088



Mac S3  
0270-1085



Mac S4  
0270-1086

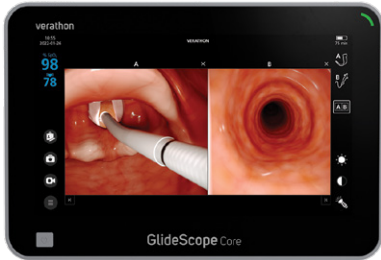
Product numbers listed above are for boxes of 10.

1. Cooper, R.M., Pacey, J.A., Bishop, M.J. et al. Early clinical experience with a new videolaryngoscope (GlideScope) in 728 patients. *Can J Anaesth* 52, 191 (2005).

2. Measurement of forces applied during Macintosh direct laryngoscopy compared with GlideScope video laryngoscopy. Russell T, Khan S, Elman J, Katznelson R, Cooper RM. *Anaesthesia*. 2012 Jun; 67(6):626-31. doi: 10.1111/j.1365-2044.2012.07087.x. Epub 2012 Feb 21.

# Compatible Monitors

Configure your GlideScope® video laryngoscopy system to the unique demands of your clinical setting. From hospital settings to surgery centers and EMS, find the option that suits your needs.



GlideScope® Core™ 15



GlideScope® Core™ 10



GlideScope® Go™ 2



## Portable Video Laryngoscope System

The portable video laryngoscope system, GlideScope® Go™ 2, is ideal for use in small spaces, routine or emergent procedures, and whenever your environment demands mobility.

## Easy-to-use Stylets For Quick Intubation

GlideRite® Stylets enable ET Tube control and placement while using GlideScope hyperangulated video laryngoscopes. The preformed, rigid design coupled with easy-to-use handles are available in single-use and reusable options.

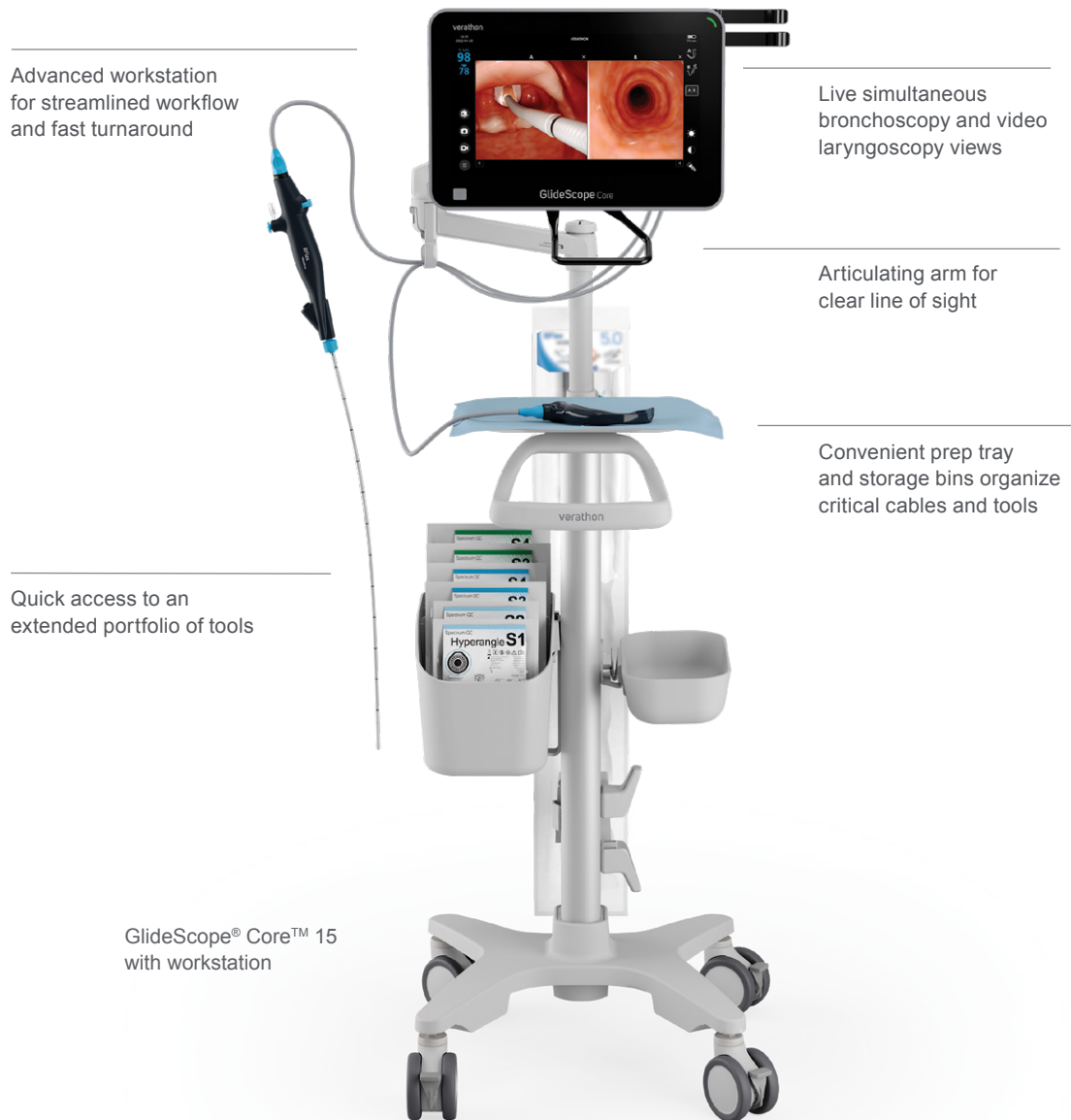
Visit [verathon.com/stylets](http://verathon.com/stylets) to learn more.



# The Total Airway Solution

## Single-use Video Laryngoscopy and Bronchoscopy In One Mobile System

GlideScope® with BFlex™ – the Total Airway Solution – integrates high quality bronchoscopy and video laryngoscopy with live dual views and brilliant visualization – empowering you to act with confidence in routine and emergent situations.



Advanced workstation for streamlined workflow and fast turnaround

Live simultaneous bronchoscopy and video laryngoscopy views

Articulating arm for clear line of sight

Convenient prep tray and storage bins organize critical cables and tools

Quick access to an extended portfolio of tools

GlideScope® Core™ 15 with workstation

Schedule a demo with your Verathon representative or visit [verathon.com/spectrumqc](https://verathon.com/spectrumqc)

**verathon**

[verathon.com](https://verathon.com)

Verathon Inc.  
20001 North Creek Parkway  
Bothell, WA 98011  
USA

Tel: +1 800 331 2313  
(USA & Canada only)

Tel: +1 425 867 1348  
Fax: +1 425 883 2896

EC REP

Verathon Medical (Europe) B.V.  
Willem Fenengstraat 13  
1096 BL Amsterdam  
The Netherlands

Tel: +31 (0) 20 210 30 91  
Fax: +31 (0) 20 210 30 92

Verathon Medical (Australia) Pty Limited  
Unit 9, 39 Herbert Street  
St Leonards NSW 2065  
Australia

Tel: 1800 613 603 (Within Australia)  
Fax: 1800 657 970

Tel: +61 2 9431 2000 (International)  
Fax: +61 2 9475 1201