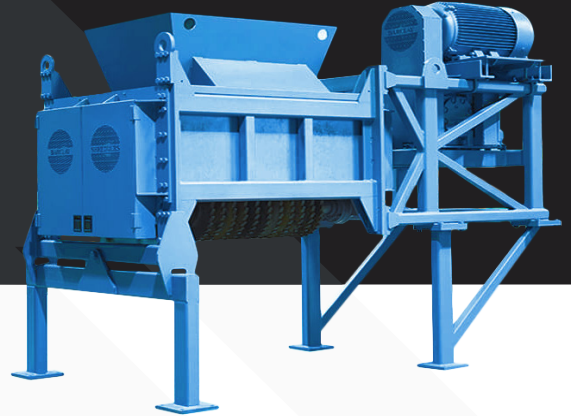


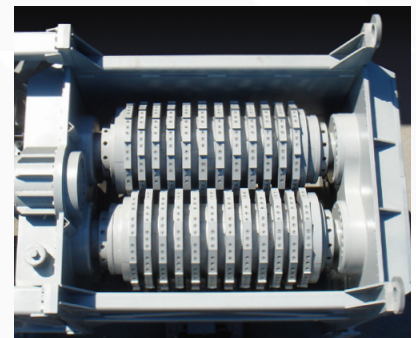
Barclay Secondary Shredders, consisting of three configurable models – 1.4S, 2.0S, and 3.6S – specifically designed to shred pre-processed tyres into 1.4", 2" and 3.6" chips (35, 50 and 90 mm respectively).

This machine is perfect for TDF production or granulating and is ideal for running in-line behind a primary shredder.



Features

- Top-feed design allows oversized pieces of material to be re-fed into the machine to achieve the desired chip size.
- Modular knife/base combination for easier blade changes and maintenance required.
- Rotary strippers prevent materials from becoming jammed between the knives resulting in higher efficiency and reducing potential downtime.
- Barclay Secondary Tyre Shredders typically cut 2" chips but we can manufacture custom machines that produce thinner or wider chips.



Options

- Optional in-feed and out-feed conveyors.
- Add-on classifier and primary shredder for a complete tyre shredding system.



MODEL	1.4S	2S	3.6S
Weight	15.4 T	14.9 T	12.7 T
MOTOR			
Type	Electric Geardrive – SEW Eurodrive		
Power	200 HP	200 HP	75 – 100 HP
Voltage	380 – 460 V		
Phase	3 phase		
SHAFT			
Diameter	13 1/2” (342.9 mm)	13 1/2” (342.9 mm)	9 1/2” (241.3 mm)
RPM	20 – 28 rpm		
Orientation	Top Feed Horizontal		
CUTTING CHAMBER			
Width	44” (1117 mm)	48” (1219 mm)	72” (1829 mm)
Spacing	1.3’ – 1.4” (33-35 mm)	1.6”-2” (40-50 mm)	3.6” (90 mm)
Cuts	27	23	16
Thickness	1.3”-1.4” (33-35 mm)	1.6”-2” (40-50 mm)	1.3” (33 mm)
CAPACITY			
Throughput	12 T p/Hr	12 T p/Hr	16 – 20 T p/Hr
Chip Output	1.4” (35 mm)	2” (50 mm)	3.6” (90 mm)



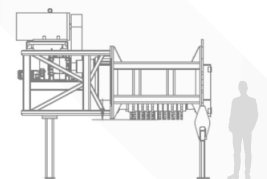
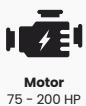
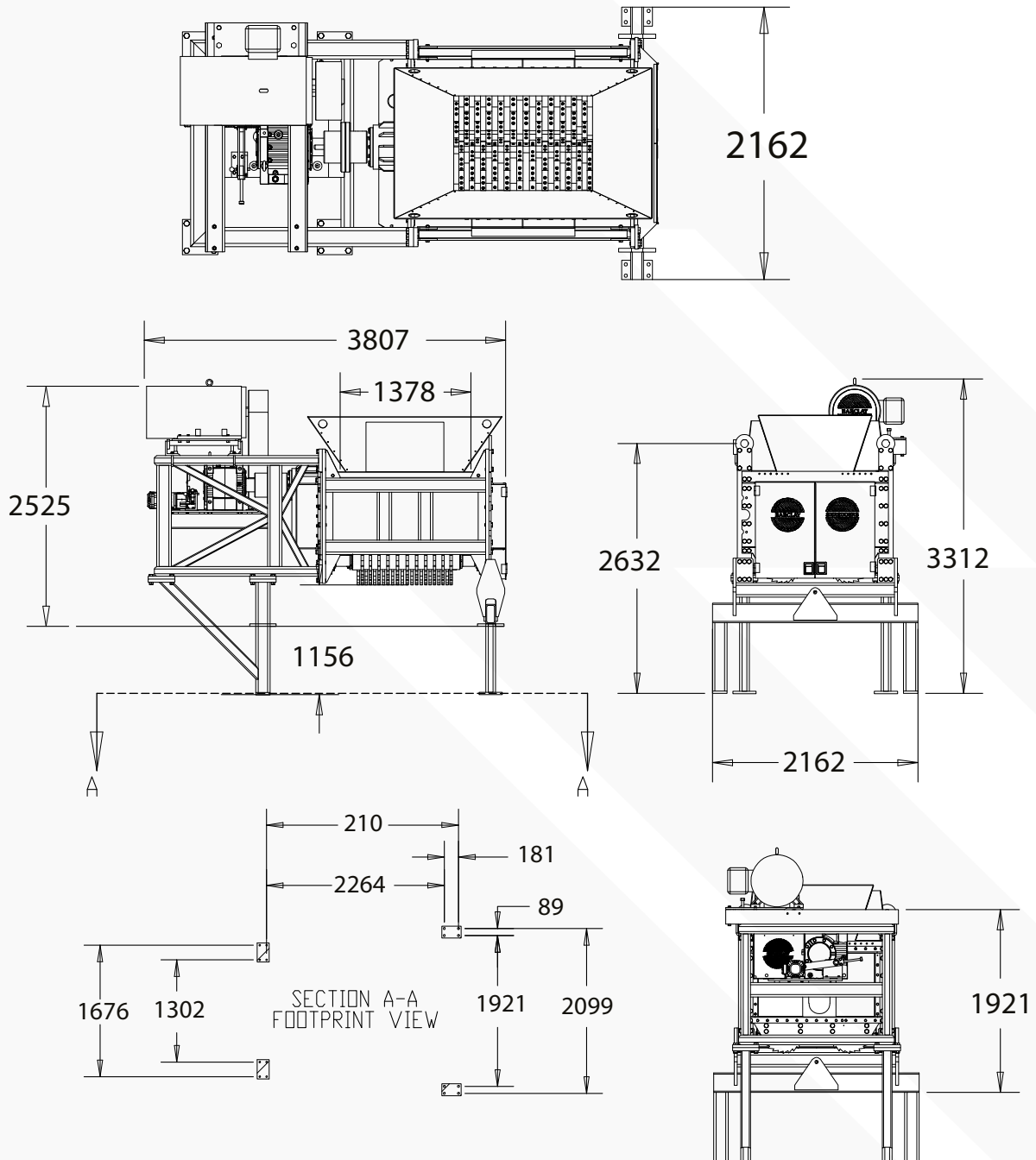
VERTECH

BARCLAY SHREDDERS

SECONDARY SHREDDER

MODELS 1.4, 2 & 3.6 S

PRODUCT SCHEMATICS



Size Comparison