



3200*i* Tablet Press

Maximum Economy of Production

Double Rotary Press

Single/Double Layer

The principal advantages at a glance - 3200*i*

The innovations

- High-performance rotary press, effective in practice
- Productive, precise, reliable in operation, robust →
- Exchangeable die turret → → → → → → → → → →
- Exchangeable segment turret (patent-pending) →
- Large number of stations on the turret → → → → →
- Operator terminal with 15" touch-screen → → → →
- Wide range of accessories and peripherals → → →
- Maximum security and monitoring → → → → → →
- Automatic process monitoring → → → → → → → →
- High-quality FETTE standard components → → →

Your benefits

- Excellent cost/benefit ratio
- Best TCO (Total Cost of Ownership) figures
- Format change over is very fast
- High yield, simplified cleaning
- Maximum profitability with large batches
- Easy to handle and operate
- Remarkable flexibility and range of applications
- 24-hour unmanned operation
- Future-proof basic equipment and software
- Conforms to GMP, GAMP and FDA



Economic aspects are always intimately related to productivity and to the equipment in use. Under circumstances in which, for example, very large to medium-sized batches of tablets are produced to meet clear specifications, the features of the press can be matched to those particular requirements without losing the benefits of mature, reliable technologies and complete flexibility.

At FETTE we have focused closely on this particular need, and developed a solution that embodies the high-quality of the standard components used in FETTE presses without compromise. The 3200*i* unites 100% economic viability with the top technology of the leader in this market sector.

Set against the context of the spectrum of modern tablet presses currently in use around the world, the 3200*i* occupies the position of the "workhorse" so convincingly that any practically relevant cost/benefit calculation comes to one clear result: FETTE 3200*i*.

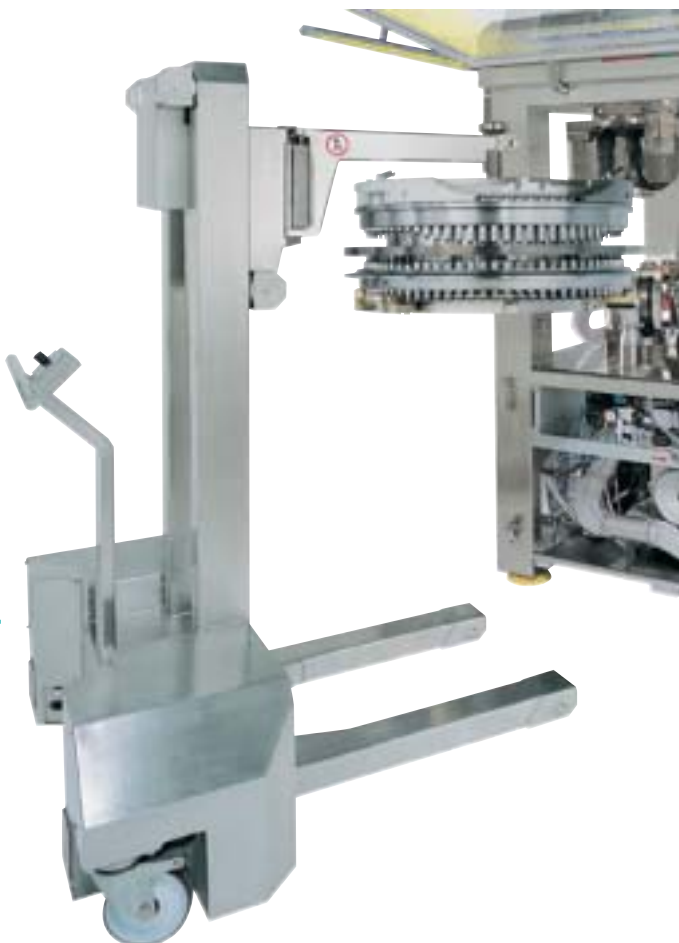


Care about health is complex. Tableting technology is our contribution. FETTE COMPACTING.

High productivity through double capacity - 3200*i*



- Two identically sized pre-compression and main compression stations on one turret: double capacity

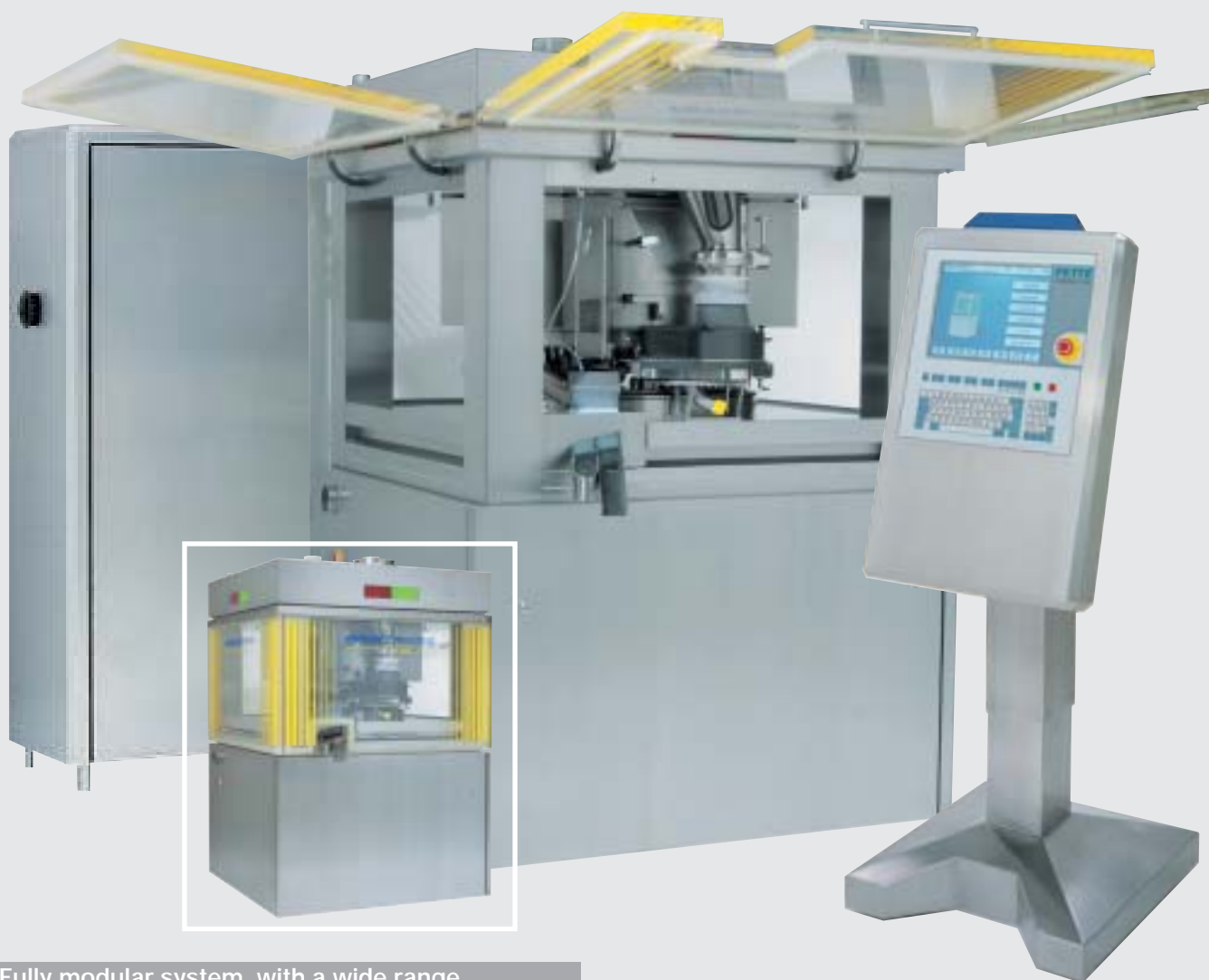


Double tablet output or 2-layer compression products

- 2 filling units
- 2 pre-compression and main compression stations
- 2 tablet outlets
- 2 Fill-O-Matics
- Up to 75 punch stations in the segment turret (patent-pending)
- Up to 79 punch stations in the die turret

Extremely high performance figures through optimized design

- More than 1 million tablets/h
- 24-hour unmanned production
- Reduction of down-time through the use of a second exchange turret or a second segment set
- Increased yield through die table segment turret
- Increase in annual yield through use of the optimum turret in relation to the tablet diameter
- Shortening of cleaning time through easy accessibility and assembly without special tools
- Simple and flexible integration into production lines



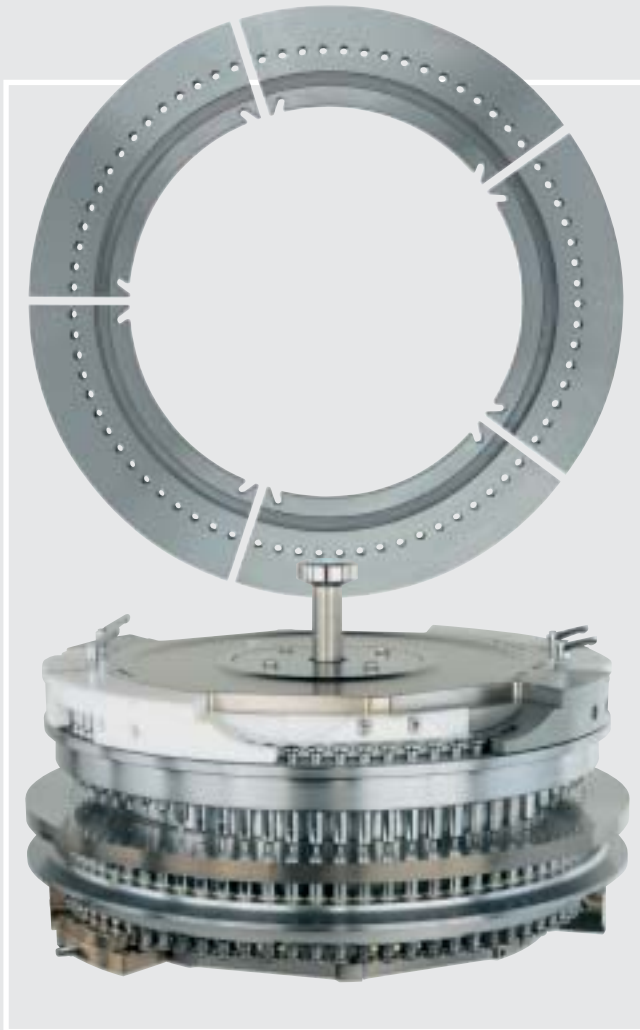
Fully modular system, with a wide range of optional peripheral units

- 3200*i* tablet press with exchangeable die or segment (patent-pending) turret
- 15" touch-screen with clearly structured user interface
- Switch cabinet with VME bus computer
- Peripheral devices:
 - PKB stearate distributor
 - GRATEX (dust removal and de-burring of tablets)
 - VERTICAL DEDUSTER (de-dusting and vertical transport for further treatment stages)
 - CHECKMASTER 4.1 (in-process control of tablet diameter, thickness, weight and hardness)
 - WEIGHTMASTER 4.1 (alternative, for weight-checking only)
 - METALCHECK (inspection and rejection of tablets contaminated by metal)
 - LOADING CENTER (tablet filling unit)
 - HANDLING SYSTEM for turret exchange

High flexibility with exchangeable segment turrets (patent-pending) – 3200i

Great simplification achieves powerful performance potentials

- Die table segments (patent-pending) for all current FETTE presses
- All the positive features of conventional exchangeable turrets are retained
- More stations bring up to 50% increase in yield, depending on tablet diameter
- Radically shortened fitting time through an 88% reduction in the number of parts
- Simplified cleaning without the cracks, bolts and holes of a standard die plate
- More than 50% reduction in the loss of product, depending on product properties, through smooth surfaces and the absence of gaps between the die table and the dies
- Reduced wear through optimum material properties (e. g. 63 Rockwell hardness of the segments)
- Simplified logistics through fewer parts
- Lower ejection forces bring higher tablet quality due to smooth surfaces



Turret with patented properties

- Complete die table package is removed, including all cams and punches, patented
- Adjustment to changing production requirements in very little time
- Flexible fitting through standardized parts
- Lower punch secured by patented punch brake against falling out during exchange
- Turret optionally manufactured of stainless steel and hard-chromed
 - increased resistance to abrasion
 - increased resistance to chemicals
 - reduced surface roughness, smooth surfaces
 - fast cleaning in the washing centre



Two-layer tablets

- 2-layer tablets in a wide range of formats
- Easy refitting from single to double layer
- Optimum layer separation

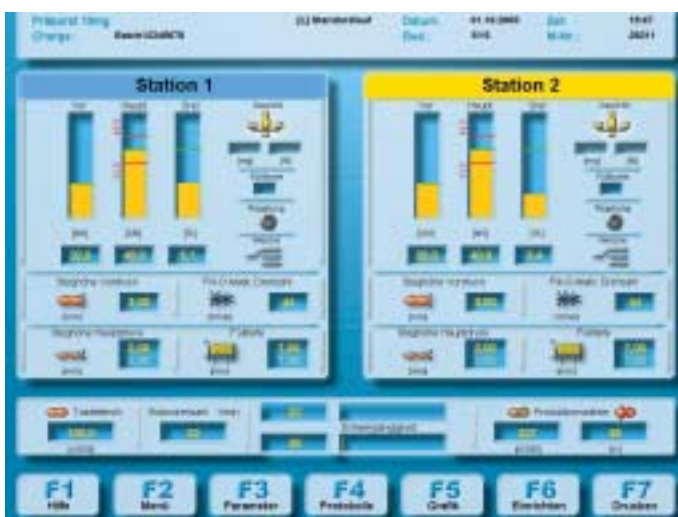
Optimum operation with the latest hardware and software – 3200*i*

Powerful operating panel simplifies secure operation

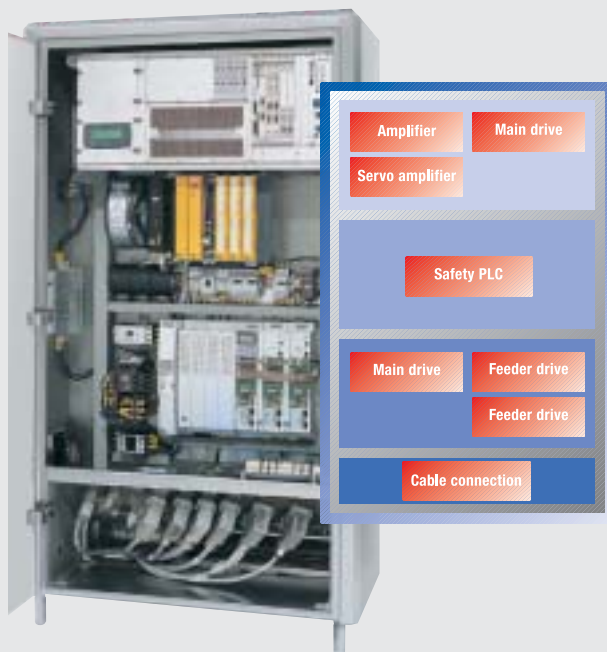
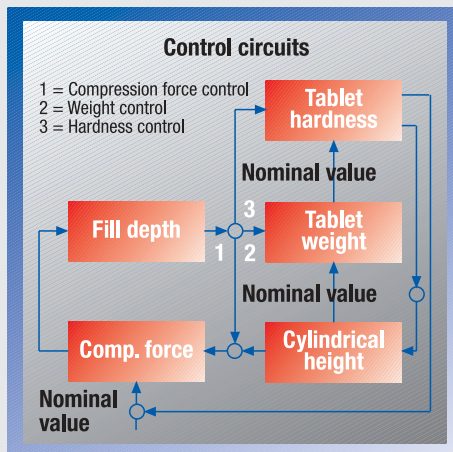
- 15" touch-screen for an improved overview
- Powerful Pentium industrial PC offers ideal data processing and storage
- Windows XP® operating system ensures compatibility
- Uninterruptible power supply protects against data loss
- Computer-controlled, user-friendly adjustment of the terminal height, patented
- Teleservice optional available

Greatly simplified press operation

- Improved operation with the aid of easily understood icons and buttons
- Structured diagnostic messages for rectifying malfunctions (expert system)
- Product-specific magnitudes can be displayed in addition to parameter lists
- Help texts provide descriptions of parameters and diagnostic messages
- All production-relevant data are brought together in one view
- All batch data can be examined
- Different user levels available for security
- Full conformity with 21 CFR Part 11



Maximum security and monitoring with optimized control – 3200*i*



Detailed documentation

- Any and all operator inputs and changes are recorded in a change log
- Process data documentation (production record/result record)
- Operating status documentation (diagnostic record)
- Complete overview with automatic analysis
- Batch record
- Optional version management

Reliable control

- Direct control of all motor driven adjustments on the machine
- Optimal monitoring through data collection from all measuring points
- High-speed data transfer with the evaluation unit and operator interface via Ethernet TCP/IP
- Clearly structured control loops
- Highly sensitive measuring points
- Extremely stable regulation for best tablet quality
- Incorporation of production-specific data into the control process
- Precise single-tablet ejection based on compression force ensured
- Ejection force measurement for production monitoring
- Measurement of punch tightness
- Patented monitoring for punch protection
- Individual quality control, with samples drawn for specific punches
- Extraction control and monitoring for dust-free compression compartment

Safety-oriented switch cabinet

- Flexible separation of grey and white areas
- The most up-to-date computer, real-time
- Total encapsulation of electronic components from surrounding air
- Integrated modem for remote service
- All assemblies are easily accessible
- Display of current status via LEDs
- Calibration unit allows control loop adjustments at any time
- Easy exchange of computer components
- Maximum resistance to interference and electromagnetic compatibility
- All cables plugged in at both ends
- Power and control circuitry are strictly isolated
- Unique cooling design using two separate circulation systems
- Temperature reduction through standby operation

Divided structure with encapsulated compression compartment – 3200*i*



Modular mechanical construction achieves functional benefits

- Optimized strength (FEM calculation) for long service life
- Maximum operating security
- Ideal working safety
- Low maintenance costs through long service intervals
- Modular design with separation into 4 sections:
 - head section
 - compression compartment
 - middle area
 - drive area

Dust-free head section

- Plug-in, easily fitted dust extraction
- Efficient dust extraction with optional vacuum regulation
- Separate material feed essential for 2-layer tablets
- Construction of the whole machine completed by
 - sound insulation through sandwich construction and sound-insulating pillars; less than 80 dB, depending on production data
 - all cladding suspended to minimize vibration
 - reinforced window flaps, modified flap seals

Optimally aligned pressing equipment

- Precision turret mounting
- Turret and turret shaft both frictionally engaged and form-fitting
- All compression stations of the same construction
- Adjustment of the upper compression rollers through an eccentric unit
- Lower compression rollers adjusted by servo motors
- Compression stations can be moved easily
- Pre- and main compression rollers have the same dimensions for long dwell times
- Pre- and main compression force can be up to 100 kN



Encapsulated compression area

- Unpainted, uncluttered compression compartment
- Ideal visibility through window flaps with no frames, double-glazed
- Very accessible from all 4 sides
- Conforms to the highest GMP standards
- Easily cleaned and easily exchanged push-in elements shorten fitting times
- Smooth surfaces for best possible cleaning
- Strict separation of drive and compression areas
- Removable, without tools, double-lip seals on the window flaps
- Filling hopper easily removed by twisting and lowering

The latest filling system

- Fill-O-Matic with proven three-chamber system
 - easily dismantled
 - easily cleaned
 - filling and dosage wheel easily exchanged
 - sealing segments matching the tablet diameter brings an enormous reduction in product loss
 - optionally available in washable stainless steel



Drive chamber optimized for fittings

- Suspended base plate with vibration insulation
- Detachable drive unit with torque support
- Stable straight bevel gear pairing with high efficiency
- Precisely tapered roller bearings

Number of Stations	79	75	73	61	75	49	49	49	55	37	45
Punch type	EU 19 BBS	EU 19 (IPT 19) Segmented turret	EU 19 (IPT 19) BB	EU 19 (IPT 19) B	EU 19 (IPT 19) Segmented turret	EU 1* (IPT 1*) D	EU 1*-441	EU 1*/EU 1*-441 (IPT 1*) Segmented turret	EU 35	EU 35	Segmented turret
Tablet output/h	min. max.	135,000 1,080,000	131,400 700,800	109,800 585,600	135,000 720,000	88,200 470,400	88,200 470,400	99,000 528,000	66,600 355,200	81,000 432,000	
Max. compression force	kN	100*	100	100	100	100	100	100	100	100	100
Max. tablet diameter	mm	11	13	16	18	25	25	25	34	34	34
Max. filling depth	mm	18	18	18	22	22	22	22	26	26	26
Max. tablet thickness	mm	8.5	8.5	8.5	8.5	8.5	8.5	8.5	8.5 (11)	8.5 (11)	8.5 (11)
Pitch circle diameter	mm	680	680	680	680	680	680	680	680	680	680
Turret rotation speed	min ⁻¹	15-120	15-80	15-80	15-80	15-80	15-80	15-80	15-80	15-80	15-80
Die diameter	mm	22	24	30.16	-	38.1	38.1	-	52	-	-
Die height	mm	22.22	22.22	22.22	-	23.8	23.8	-	30	-	-
Punch shaft diameter	mm	19	19	19	19	25.35	25.35	25.35	35	35	35
Punch length	mm	133.6 (133.35)	133.6 (133.35)	133.6 (133.35)	133.6 (133.35)	133.6 (133.35)	133.6 (133.35)	133.6 (133.35)	133.6	133.6	133.6
Upper punch pen. depth	mm	2-4 (8)	2-4 (8)	2-4 (8)	2-4 (8)	2-4 (8)	2-4 (8)	2-4 (8)	2-4 (8)	2-4 (8)	2-4 (8)
Weights	Tablet press approx. 4500 kg · Operator terminal 100 kg · Electrical cabinet 350 kg										
Power supply data	Operating voltage 360-528 V, 50/60 Hz · Total fusing 50 A · Power consumption 12 kW										

*Tools only permit up to 70 kN zu. If tools are large and filling depth is high the machine cannot be run at the highest capacity.
(8) at 2 layer for first layer

Because of the technical progress we reserve the right of alteration.

Technical data - 3200i

Comparative table for dies and die table segments – 3200*i*

For round tablets	For round tablets
Single dies	Die table segments
up to ø 11 mm 79 stations-EU19 dies ø 22 x 22.22 high max. filling depth 18 mm max. perf.: 1,137,600 tabl./h	up to ø 11 mm 75 stations-EU19 max. filling depth 22 mm max. perf.: 1,080,000 tabl./h
up to ø 13 mm 73 stations-EU19 dies ø 24 x 22.22 high max. filling depth 18 mm max. perform.: 700,800 tabl./h	up to ø 18 mm 75 stations-EU19 max. filling depth 22 mm max. perform.: 720,000 tabl./h
up to ø 16 mm 61 stations-EU19 dies ø 30.16 x 22.22 high max. filling depth 18 mm max. perform.: 585,600 tabl./h	
up to ø 25 mm 49 stations-EU1" dies ø 38.1 x 23.8 high max. filling depth 20 (22) mm max. perform.: 470,400 tabl./h	up to ø 25 mm 55 stations-EU1" max. filling depth 22 mm max. perform.: 528,000 tabl./h
up to ø 25 mm 49 stations-EU1"-441 dies ø 38.1 x 23.8 high max. filling depth 20 (22) mm max. perform.: 470,400 tabl./h	up to ø 25 mm 55 stations-EU1"- 441 max. filling depth 22 mm max. perform.: 528,000 tabl./h
For oblong tablets	For oblong tablets
Single dies	Die table segments
up to ø 11 mm 79 stations-EU19 dies ø 22 x 22.22 high max. filling depth 18 mm max. perf.: 1,137,600 tabl./h	up to ø 11 mm 75 stations-EU19 max. filling depth 22 mm max. perf.: 1,080,000 tabl./h
up to ø 13 mm 73 stations-EU19 dies ø 24 x 22.22 high max. filling depth 18 mm max. perform.: 700,800 tabl./h	up to ø 18 mm 75 stations-EU19 max. filling depth 22 mm max. perform.: 720,000 tabl./h
up to ø 16 mm 61 stations-EU19 dies ø 30.16 x 22.22 high max. filling depth 18 mm max. perform.: 585,600 tabl./h	
up to ø 25 mm 49 stations-EU1" dies ø 38.1 x 23.8 high max. filling depth 20 (22) mm max. perform.: 470,400 tabl./h	up to ø 25 mm 55 stations-EU1" max. filling depth 22 mm max. perform.: 528,000 tabl./h
up to ø 25 mm 49 stations-EU1"-441 dies ø 38.1 x 23.8 high max. filling depth 20 (22) mm max. perform.: 470,400 tabl./h	up to ø 25 mm 55 stations-EU1"- 441 max. filling depth 22 mm max. perform.: 528,000 tabl./h

Single sided production optional – 3200*i*

Continuous production

- If a packaging machine is attached to each station of a 3200*i*, it can happen that one of them stops, for reasons associated with the packaging machine, while the other one continues to run. The "single-sided production operation" option makes it possible to continue production at just one of the stations of the press.
- Advantage when producing single-layer tablets: if the press is fed from two containers, which will almost never become empty at exactly the same time, then when one of the containers has run out it is possible to continue production from the material remaining in the second.
- Since the 3200*i* is a symmetrical double press, the "single-sided production operation" function can also be used if components on one side fail, in order to continue operation with the other half.



Global representation

FETTE GMBH · Grabauer Str. 24 · D-21493 Schwarzenbek · Postfach 11 80 · D-21484 Schwarzenbek · Deutschland
Tel.: +49 (0) 41 51 12-0 · Fax: +49 (0) 41 51 83 33 71 · e-mail: tablet@fette.com · Internet: <http://www.fette.com>

REPRESENTATIVES

ALGERIA (see France)

BELGIUM

procondi
Rubensstraat 104
2300 Turnhout
Tel.: 0032-14-470834
Fax: 0032-14-470835
e-mail: e.hoppenbrouwers@procondi.com

BOSNIA-HERZEGOVINA

Alterra d.o.o.
Gunduličeva 56
78000 Banja Luka
Tel.: 00387-51-226 150
Fax: 00387-51 226 151
e-mail: alterra@inecco.net

BULGARIA

Schmidt 2000
Evlogi Georgiev Str. 78
1124 Sofia
Tel.: 00359-2 946 0110
Fax: 00359-2 946 1343
e-mail: schmidt@techno-link.com

CHINA

JOHS. RIECKERMANN
Mönckebergstraße 10
20095 Hamburg
Tel.: 040-320 20-141
Fax: 040-320 20-241
e-mail: sch@rieckermann.de

GERMANY

PROPACK GMBH
Prozess & Verpackungstechnik
Kriegsstraße 13
76135 Karlsruhe
Tel.: 0721-98 83 33
Fax: 0721-88 30 03
e-mail: pro@propack.de

T.G. RITTER Spezialmaschinen GmbH
Rhönstraße 7
65510 Hünstetten
Tel.: 06438-42 04
Fax: 06438-50 86
e-mail: tgitter.hans.maier@t-online.de

RICHARD SCHULZ OHG

Hans-Schullen-Str. 10
51109 Köln
Tel.: 0221-84 20 41
Fax: 0221-84 07 87
e-mail: schulz.ingbuero@t-online.de

DENMARK

DONSMARK PROCESS
TECHNOLOGY A/S
Amalievej 20
1875 Frederiksberg C
Tel.: 0045 70 25 48 88
Fax: 0045 70 25 83 33
e-mail: md@donsmark-process.dk

ENGLAND

EURO-PHARMA MACHINERY LTD.
Unit 12, Highview
GB-Bordon, Hampshire GU35 0AX
Tel.: 0044 1420-47 33 44
Fax: 0044 1420-48 80 30
e-mail: stuart@europharma.com.uk

FINLAND

BANG & BONSOMER OY
Itälähdenkatu 18 A
FIN-00211 Helsinki
Tel.: 00358-9-6810 8222
Fax: 00358-9-69 24 17 4
e-mail: ulla.lonngrén@bangbonsomer.fi

FRANCE

ECOPAC S.A.
30, Rue Roger Salengro
F-94120 Fontenay-sous-Bois
Tel.: 00331-48 77 63 63
Fax: 00331-48 77 77 70
e-mail: ecopac@ecopac.fr

GREECE

EUROPACK Industrial Solutions S.A.
27, Ypsilantou Street
GR-16675 Glyfada Athens
Tel.: 0030 210-9607102
Fax: 0030 210-9600590
e-mail: contact@europack.gr

CIS

Glatt GmbH
Gagarinskiy Pereulok 3, pod. 5
119034 Moskva
Tel.: 007 095-787 24 08
Fax: 007 095-787 24 09
e-mail: l.heinzi@glatt-weimar.de

IRELAND (see England)

ISRAEL

PACKIS
Beit Nur, 43 Haatzmaut Road
IL-56101, Yehud
Tel.: 00972 3-6322626
Fax: 00972 3-6322628
e-mail: i-p@ismatex-packis.co.il

ITALY

MANES MACCHINE SRL
Via Pietro Colletta, 27
I-20135 Milano
Tel.: 003902-5425181
Fax: 003902-55187194
e-mail: info@manesmacchine.it

CROATIA

Branka Holland
Biankijeva 19
10000 Zagreb
Tel.: 00385 14641 072
Fax: 00385 14641 072
e-mail: branka.holland@hi.htnet.hr

MOROCCO (see France)

MACEDONIA (see Bosnia)

NEAR EAST / MIDDLE EAST

JOHS. RIECKERMANN
Mönckebergstraße 10
20095 Hamburg
Tel.: 040-32020-141
Fax: 040-32020-249
e-mail: ppp@rieckermann.de

NETHERLANDS

BIENFAIT Filter- & Procestechiek B.V.
Waarderweg 54
NL-2031 BP Haarlem
Tel.: 0031 23 5530321
Fax: 0031 23 5422480
e-mail: info@bienfait.net

NORWAY (see Sweden)

AUSTRIA

Ginsberg & Beier GmbH
Großer Sand 95
25436 Uetersen
Tel.: 04122-9039-0
Fax: 04122-903939
e-mail: beier@gbgmbh.de

PAKISTAN

M.A. SAMI International
29-C, Flat No. 4, 2nd Floor
Khayaban-E-Bader, Badar Commercial Area
PK-Karachi 75400
Tel.: 0092 21-5340558/559/560
Fax: 0092 21-5340557
e-mail: samilinternational@yahoo.com

POLAND

TRADE & CONSULT LTD. Sp. Z.o.o.
Ul. Kubickiego 9/6
PL-02-954 Warszawa
Tel.: 0048 22 885 28 08
Fax: 0048 22 642 34 98
e-mail: info@tradeconsult.pl

PORTUGAL

SOCIEDADE AVANÇO S. A.
Rua São Francisco Xavier, 15 Tercena
2730-168 Barcarena
Tel.: 00351 21 430 86 90
Fax: 00351 21 439 27 69
e-mail: pedro.marcos@avanco.com.pt

ROMANIA

NOVA 91 IMPORT-EXPORT S.R.L.
Calea 13 Septembrie Nr. 108,
Bloc 52-54, Scara 1, Ap. 19, Sec 5 Bucuresti
Tel.: 0040 21 7810381
Fax: 0040 21 7810381
e-mail: ionescuv@mailbox.ro

SWEDEN

Gotapack International AB
Packaging & Processing
Pusterviksgatan 13
SE-41301 Göteborg
Tel.: 0046-31 7010990
Fax: 0046-31 7034373
e-mail: jan.johannesson@gotapack.se

FETTE COMPACTING

SWITZERLAND

K. Lüke AG Ingenieurbüro
für Verfahrensschritte
Engelbergstraße 23
CH-6243 Egolzwil - LU
Tel.: 0041 41-980 37 44
Fax: 0041 41-980 45 44
e-mail: klueke@starnet.ch

SERBIA-MONTENEGRO (see Bosnia)

SLOVAKIA

GLOBALPACK GmbH
Spitalska 35
SK-81108 Bratislava
Tel.: 0042 12 63 81 43 27
Fax: 0042 12 63 83 46 94
e-mail: kubecova@euroweb.sk

SLOVENIA (see Croatia)

SPAIN

FARMA ALIMENTA, S.L.
Calle Peru, 6
Edificio Twin Golf B, Oficinas 4 y 5
E-28290 Las Matas (Madrid)
Tel.: 0034 91-6308390
Fax: 0034 91-6309090
e-mail: gregorio.moreno@farma-alimenta.com

SOUTH AFRICA

W. H. Rosenmeyer & Co. (Pty) Ltd.
Vaal House, 92 Paarlishoop Road
Homestead Park
Johannesburg 2092
Tel.: 002711-839-2950/2
Fax: 002711-839-1320
e-mail: info@rosenmeyer.co.za

CZECH REPUBLIC (see Slovakia)

TURKEY

ALKEM TEKNİK HİZMET Ltd. Sti.
Hanımefendi Sok. Cinar Apt. No. 117/8
TR-80260 Sisi-Istanbul
Tel.: 0090 212-2301383
Fax: 0090 212-2301636
e-mail: alkem@superonline.com

TUNISIA (see France)

HUNGARY

GINSBERG & BEIER GMBH
Gr. Sand 95
D-25436 Uetersen
Tel.: 04122-90 39 11
Fax: 04122-90 39 39
e-mail: beier@gbgmbh.de

FETTE AMERICA USA · 400 Forge Way · Rockaway N.J. 07866 · Tel.: 001 973-5868722 · Fax: 001 973-5860450 · e-mail: sales@fetteamerica.com

REPRESENTATIVES

CANADA (see USA)

PUERTO RICO · Road no. 1 · KM 20.9 RR-3 · Box 3710 · San Juan, P.R. 00926 · Tel.: 001 787-789 3050 · Fax: 001 787-789 3099 · e-mail: Juanjose@johnnyrullan.com

FETTE ASIA PACIFIC LTD · P.O. Box 63 Sai Kung Post Office · Hong Kong · Tel.: 00852-27915330 · Fax: 00852-27915390 · e-mail: ghueffmann@fette.com.hk, fette@netvigator.com

REPRESENTATIVES

AUSTRALIA

MPI Australia Pty Ltd
65-69 Asquith Street
Silverwater, NSW 2128
Tel.: 0061 2-9648 3011
Fax: 0061 2-9648 3282
e-mail: sales@mpiaust.com.au

INDIA

Pam Pharmaceutical & Allied
Machinery Company Pvt. Ltd.
127, Kandivli Industrial Estate
Mumbai (Bombay) -400 067
Tel.: 0091 22-28 682 650
Fax: 0091 22-28 683 091
e-mail: sales@pamindia.com

JAPAN

BOSCH Packaging Technology K.K.
3-6-7 Shibuya, Shibuya-Ku
Tokyo 150-0002
Tel.: 0081-3-5466-2550
Fax: 0081-3-5466-2551
e-mail: vtjp@boschpackaging.com

NEW ZEALAND

(see AUSTRALIA)

TAIWAN

ATTRA GIAND INDUSTRIAL CO., LTD.
Taipei, R.O.C.
Tel.: 00886 2-25435076
Fax: 00886 2-25814295
e-mail: franklin@atragiand.com.tw

FETTE AMERICA LATINA LTDA · Rua André de Leao 155, Bloco C, CEP 04762-030 Socorro Sao Paulo · Brasilien · Tel.: 0055 11 5687 6006 · Fax: 0055 11 5521 0911 · E-Mail: fetteal@fette.com

REPRESENTATIVES

ARGENTINA

JUAN R. WENZEL
Machain 4639
C1430DZG Buenos Aires
Tel.: 0054-11-4546 0667
Fax: 0054-11-4545 8741
e-mail: karin.block@wenzel.com.ar

BOLIVIA

(see Argentina)

BRAZIL

MAQUIDREX
Avenida Adolfo Pinheiro, 1001, 2° andar
04733-100 Sao Paulo - SP
Tel.: 0055-11-5546 5930
Fax: 0055-11-5546 5931
e-mail: sales.services@maquidrex.com.br

CHILE

ALCAMAN Ltda.
Explorador Fawcett 1660, of 21
Santiago
Tel.: 0056-2-3424928
Fax: 0056-2-2421979
e-mail: alcaman@alcaman.cl

COSTA RICA

CAFACEC S. A.
Centro de Negocios Plaza Roble
Edificio el Pátio
San José
Tel.: 00506-201 80 10
Fax: 00506-201 80 14
e-mail: asefar@amnet.co.cr

DOMINICAN REPUBLIC

(see Costa Rica)

ECUADOR

(see PERU)

EL SALVADOR

(see Guatemala)

GUATEMALA

ALCAST
14 Calle 14-27, Zona 13
Guatemala City Guatemala, C.A.
Tel.: 00502 2332-2231
Fax: 00502 2332-2231
e-mail: alcast@citel.com.gt

HAITI

(see Costa Rica)

JAMAICA

(see Costa Rica)

COLUMBIA

(see Venezuela)

CUBA

(see Costa Rica)

MEXICO

TRADIMPORT
Adolfo Prieto 1219
Col. Del Valle
03100 Mexico, D.F.
Tel.: 0052-55-5-559 6277
Fax: 0052-55-5-575 1044
e-mail: info@titmex.com

NICARAGUA

(see Costa Rica)

PANAMA

(see Costa Rica)

PARAGUAY

(see Argentina)

PERU

DROCERSA
Leon Velarde 712 Of. 202
Lima 14
Tel.: 00511-470 9232 / 471 5495
Fax: 00511-470 8642
e-mail: rcspedes@drocersa.com.pe

TRINIDAD, TOBAGO

(see Costa Rica)

URUGUAY

(see Argentina)

VENEZUELA

SERVIFARMA s.r.l.
Jürgen Betz, Apartado 76.167
Caracas 1071-A
Tel.: 0058 212-2428764
Fax: 0058 212-2429069
e-mail: servifarma@cantv.net



Leitz Metalworking Technology Group