

Getting the most out of your HID® FARGO® HDP6600

Discover how to unleash the potential of the fastest retransfer card printer on the market!

Here are a few **best practices** to ensure optimal performance:



PERFORM REGULAR CLEANING MAINTENANCE ROUTINES

For best results, be sure to utilize the inclusive cleaning roller every time you replace the print ribbon. Performing a full cleaning maintenance routine every 2000 cards is also recommended for both printer and laminator.

Learn how at:

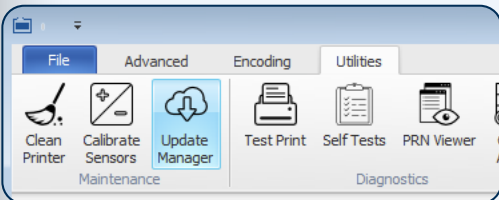
[Printer Cleaning Maintenance Routine](#)
[Laminator Cleaning Maintenance Routine](#)



CLEAN THE FILM DRIVE ROLLER AND CARD PATH

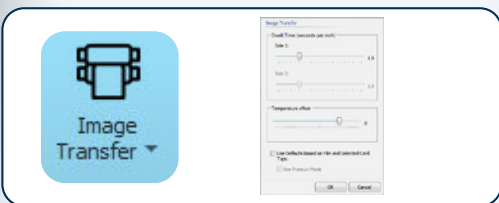
Many times, card jams and/or common film and registration errors are easily resolved or avoided altogether with a routine cleaning of the film drive roller and card path. Learn how to properly clean both by watching this helpful video:

[Clean Film Drive Roller and Card Path](#)



FREQUENTLY CHECK FOR DRIVER AND FIRMWARE UPDATES

To take advantage of the latest available feature sets and ensure optimal performance, access the Update Manager frequently to check for and download printer driver and firmware updates. Access updates directly on our website at: hidglobal.com/drivers



OPTIMIZE PRINTER SETTINGS FOR TECHNOLOGY CARDS

To avoid delamination or card jams when printing technology cards, adjust printer settings as demonstrated in this short instructional video:

[Optimize Settings to Avoid Delamination and Card Jams](#)



ENSURE COLOR CONSISTENCY

As the chemical makeup of HDP6600 color ribbons varies from that of the ribbons for the HDP5000, the resulting appearance of certain colors on finished cards will differ. To ensure consistency, print all like cards using the same printer model.

If different models must be used, we recommend manually selecting the optional legacy color profile within the HDP6600 driver and using the built-in Color Assist™ tool. *Please note that although this recommendation may help, this will not eliminate color differences.*

View the [Legacy Color Profile](#) video for more information.

Visit youtube.com/hidglobal/user/hdp6600
for more HDP6600 "How-To" videos

