

**TECHNICAL SPECIFICATIONS**

MACHINE	POUCH SIZE MIN.	POUCH SIZE MAX.	GUSSET MIN. /MAX.	MAX. VOLUME	OUTPUT PPM.	FILLING STATION	POUCH TYPE
<b>H-180 S</b>	70 x 100	190 x 300	—	1.000 c.c.	80 - 90	4	Flat
<b>H-180 D</b>	60 x 100	90 x 300	—	200 c.c.	160 - 180	4	Flat
<b>H-180 FE</b>	70 x 100	190 x 300	40 - 120	1.500 c.c.	65 - 70	4	Stand up
<b>H-150 S</b>	60 x 80	160 x 300	—	450 c.c.	80 - 90	4	Flat
<b>H-150 D</b>	50 x 100	75 x 300	—	150 c.c.	160 - 180	4	Flat
<b>H-150 FE</b>	60 x 80	160 x 300	40 - 90	900 c.c.	65 - 70	4	Stand up

Final speed will depend on product and film characteristics

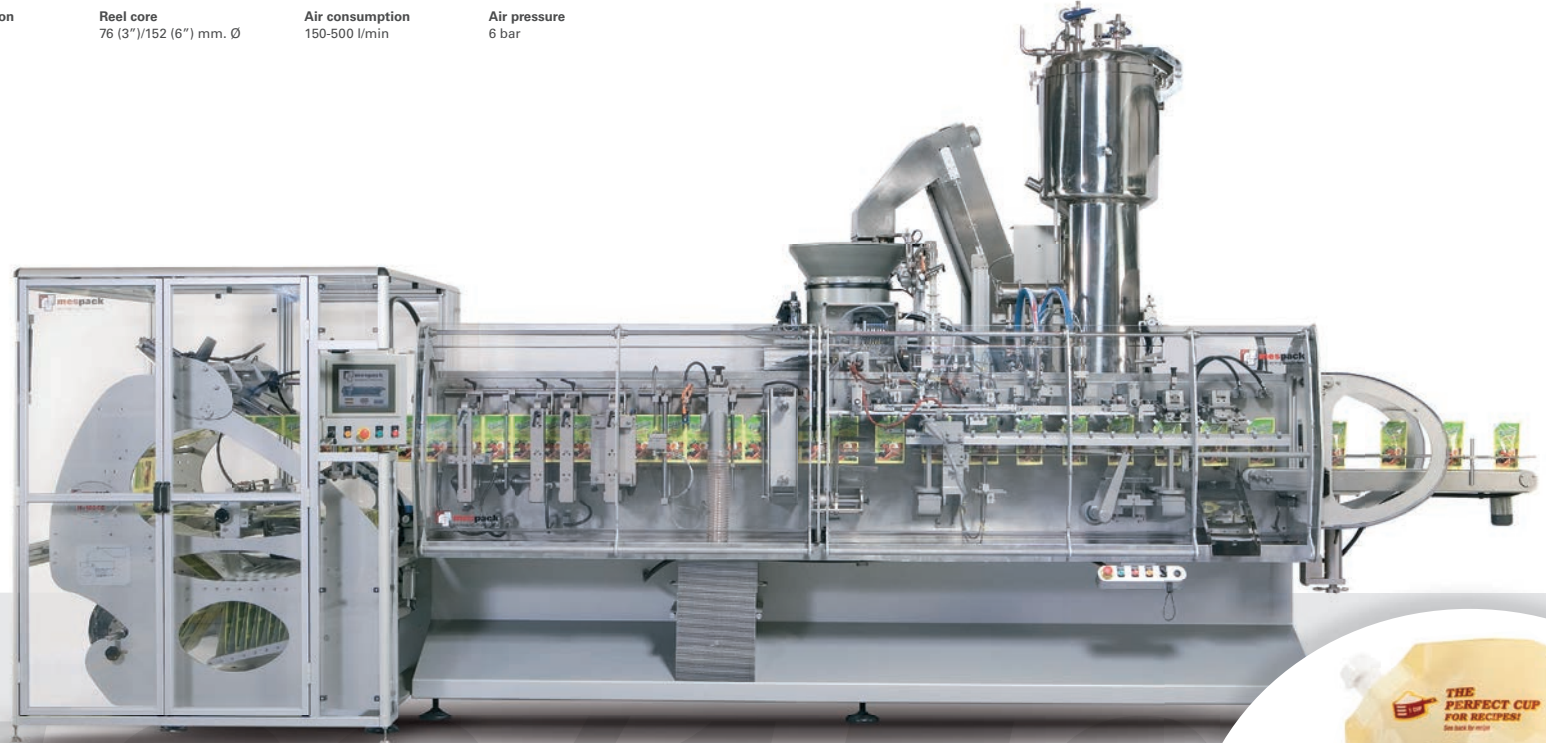
Noise level < 70 Db	Max. Reel dimensions 800/600 mm. Ø	Electrical consumption 18-22 Kw	Reel core 76 (3")/152 (6") mm. Ø	Air consumption 150-500 l/min	Air pressure 6 bar
------------------------	---------------------------------------	------------------------------------	-------------------------------------	----------------------------------	-----------------------

The **H-180** is a medium size horizontal form –fill– seal machine which produces pouches from a reel of flexible material specially suited to apply spouts, zip lock applicators or special shapes.

Flexibility is the main aspect, as using the same machine it is possible to make a wide range of different pack presentations with maximum efficiency and keeping high seal integrity.

Change over simplicity and rapidity from one product to another or from size to size, makes Mespac machines unique with respect to any existing competitive machine.

This model is especially suited for frozen food, prepared food, sauces & condiments, powdered or liquid, beverages, dried fruits, snacks, confectionary, dry mixes, etc.



**THE H-180 IS THE MOST VERSATILE DEVELOPMENT OF OUR RANGE IN WHICH WE HAVE INCORPORATED ALL LATEST TECHNOLOGY AND KNOW-HOW.**

