

Atherton



THE DUCK 1

WASHER THERMAL
DISINFECTOR FOR HUMAN
WASTE CONTAINERS

SESS

THE DUCK 1 HAS BEEN DESIGNED USING THE LATEST TECHNOLOGY TO PROVIDE A SIMPLE AND EFFECTIVE SOLUTION TO FLUSHING AND SANITIZING BEDPANS AND URINE BOTTLES.

Water consumption has been drastically reduced with the introduction of an “Eco Cycle”. This was achieved by improving our spray cleaning system which requires less water. With power consumption at just 0.16 kWh per cycle, the Duck is the most energy efficient unit available.

The door to the flushing/sanitizing chamber is opened automatically when a bedpan is held in front of it courtesy of a motion sensor. The soiled pan or bottle is then placed in the retaining rack assembly which can accommodate two urine bottles per cycle, or one bedpan, slipper pan, or commode pan. The door closes automatically when the start button is pressed.

Fully automatic cycle control is provided by a microprocessor control module. A touch screen display provides the operator with cycle status information. Should a fault occur the operator is advised via the display. If sanitizing conditions are not met, the door will remain locked until rectified.

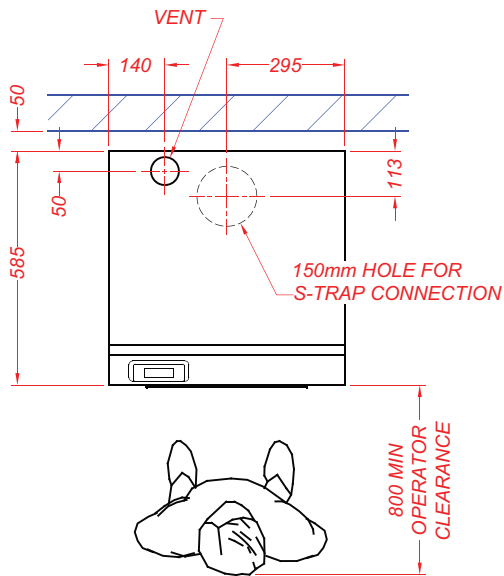


FEATURES

- Listed on the Australian Register of Therapeutic Goods
- Water mark certification
- Front access for maintenance
- 240 Volt 10 Amp GPO connection
- Electrically operated door
- Cycle record interface
- Energy efficient
- Chamber capacity - 2bottles or 1 bed pan
- Cool down stage - No hot bottles or pans
- Stainless steel construction
- No vent or tank over flow required
- Optional detergent dosing to meet requirements of ISO15883-1/-3
- Optional steam heating



TECHNICAL INSTALLATION DATA



COLD WATER

15mm BSP with minimum flow rate of 15 litres/min at 150 - 800kPa.

Consumption for Eco cycle - 9 litres or Normal cycle - 16 litres.

Water for cleaning process must comply with AS/ NZS 4187 as per Clause 7.2.3.1

- (a) Water hardness no great then 150mg/L
- (b) Chloride no greater than 120 mg/L

WASTE

100mm Connection. "S" or "P" trap.

Connection to AS3500.2

Waste discharge temperature no more than 45°C

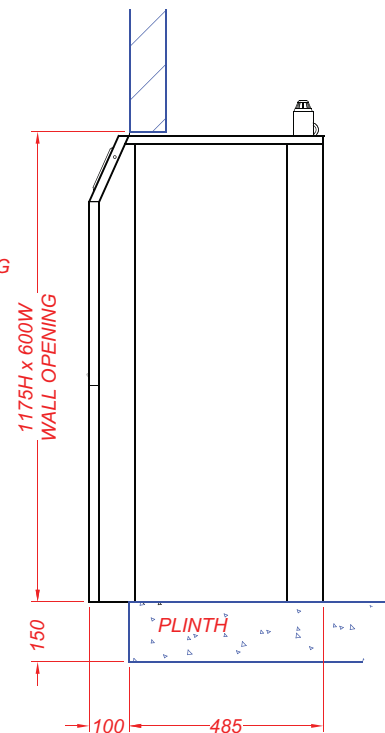
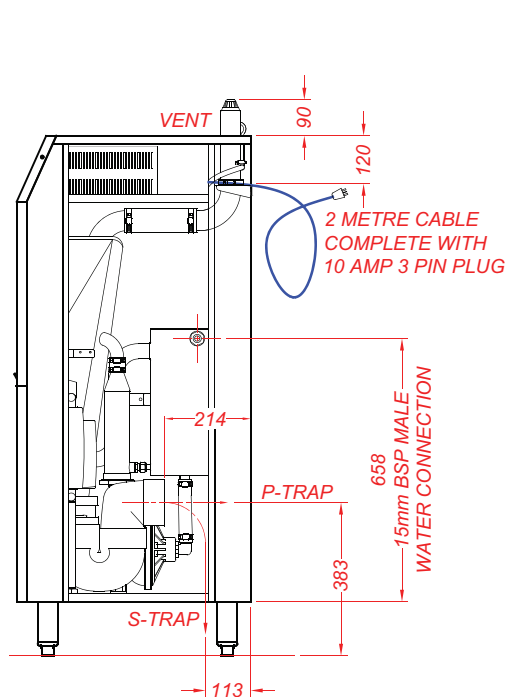
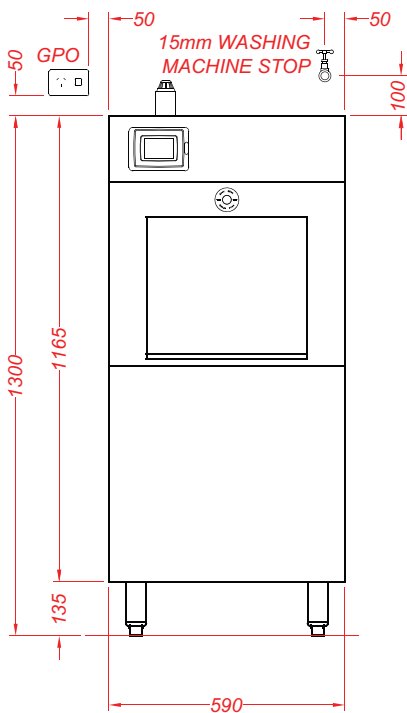
POWER

10 Amp GPO to AS3000

Consumption per cycle approximately 0.16kW hour

DATA

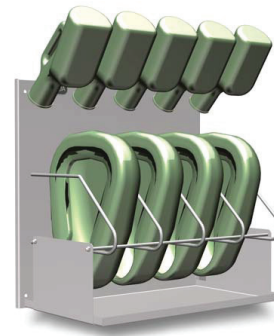
CAT 6 Connection (optional)



Freestanding

Built-in

BEDPAN AND BOTTLE RACK STANDARD CONFIGURATIONS



BOTTLES	PANS	DIMENSIONS
QUANTITY	QUANTITY	OVERALL HEIGHT X WIDTH (MM)
4	3	640 x 457
5	4	640 x 584
6	5	640 x 711
7	6	640 x 838
8	7	640 x 965
9	8	640 x 1092

Design and specifications may change without notice.

Atherton can also supply bottle and pan storage rack systems. Available in several configurations and manufactured from 304 grade Stainless Steel.

Contact Atherton to discuss appropriate sizing to suit your needs.

SESS is a Macemark Technology company.



MACEMARK
TECHNOLOGY

est. 1983

SALES & SERVICES

07 3849 1077
62 Secam St, Mansfield QLD 4122

macemarktechnology.com