

**PL & PB  
Range of  
Platform  
Scales**

**ASSOCIATED  
SCALE SERVICES**

www.associatedscales.com.au 07 3272 0077



## PLATFORM SCALES

ALL PB3000 PLATFORM SCALES ARE DESIGNED AND  
MANUFACTURED IN AUSTRALIA BY ASSOCIATED SCALES  
SERVICES IN WACOL, BRISBANE.

12 month  
WARRANTY  
(PB3000HD  
2 year  
warranty)

Custom  
Sizing

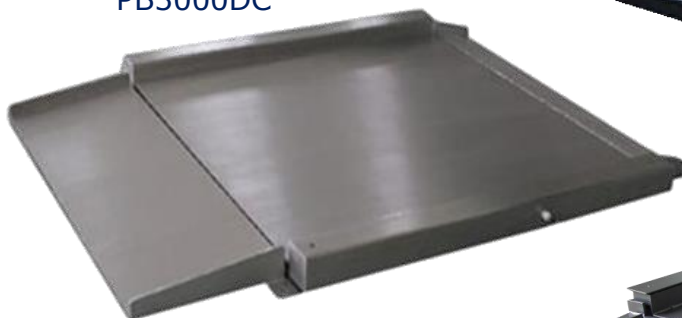
Australian  
Design  
&/or  
Manufacture

Options  
Painted  
Galvanized  
Aluminum  
Stainless -

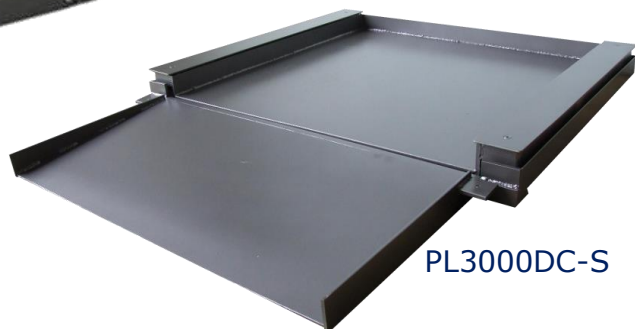
PL3000



PB3000DC



PL3000DC-S



PB3000



PL3000HD &  
PB3000HD



NOT ALL PLATFORMS SCALES ARE THE SAME

**Associated Scale Services Pty Ltd**

**Ph: +61 (0)7 3272 0077**

**Email: info@associatedscales.com.au**

**Web: www.associatedscales.com.au**



**NOT ALL PLATFORM SCALES ARE THE SAME. APPLICATIONS AND ENVIRONMENTS ALL REQUIRE DIFFERENT NEEDS FROM THE PLATFORM SCALES. CHOOSING THE CORRECT ONE WILL ENSURE EFFICIENT WEIGHING AND SERVICE LONGIVITY.**

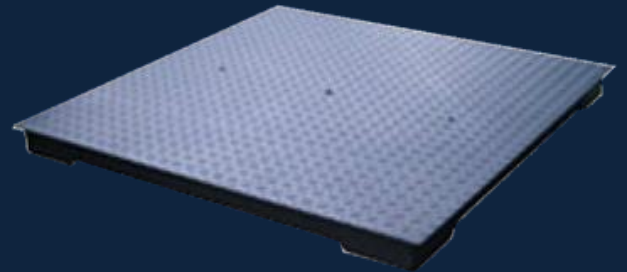
## **1. STANDARD STYLE PLATFORM SCALES**

The **PL3000** platform is designed around a fixed type weigh plate and load cell. This is the most common system found in the weighing industry.

Associated Scale Service has designed these platforms to ensure rigidity of the top plate to assist in even loading of the weighing system.

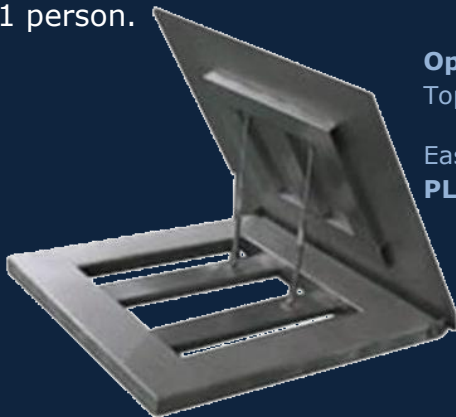
PL3000 design is for a flat plate rigid system.

- PL3000 is designed to be rigid to ensure good weighing properties
- PL3000 top plate 5mm



PL3000

**PL3000-LL** As cleaning is an important part of the food industry, there are several options for platform scales to be able to lift the top plate via gas struts. Lifting what would normally require a mechanical aid is not simply performed by 1 person.

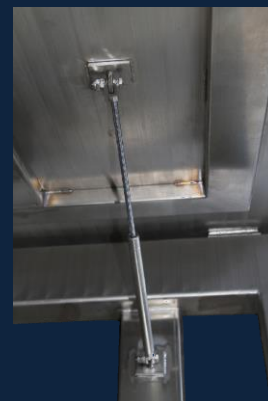


### **Options Include**

Top Lifting Stainless Steel

Easy for cleaning

### **PL3000LL**

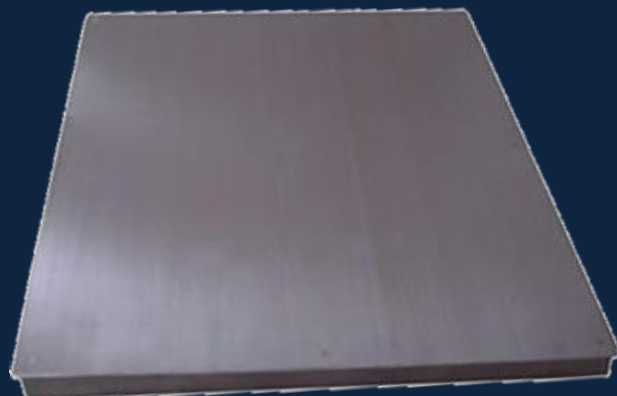


The **PL3000HD** platforms are designed around the fixed foot arrangement but have 2.5t, 3t, 5t or 10t Load Cells with substantially larger swivel feet. This system allows for higher capacities up to 30t to be developed. PL3000HD normally have 8 – 10mm flat top plates.

- PL3000 is designed to be rigid to ensure good weighing properties
- PL3000 top plate 8mm
- Uses a large foot assembly with a large ground foot print

### **Options Include**

Galvanized or  
Stainless Steel

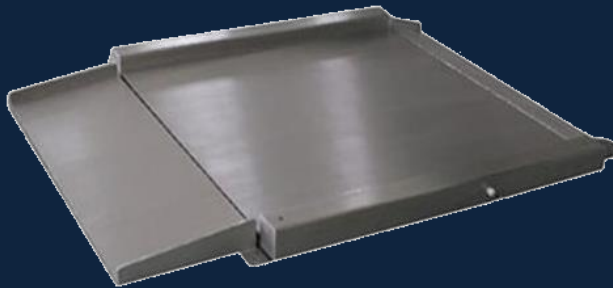


## 2. DROP CENTRE STYLE PLATFORM SCALES

**PL3000DC** design is for a flat plate rigid system. The drop center has the weigh section designed as low as possible to allow for the ramp to be as short as possible.

EXAMPLE:

- A standard 1200mm x 1200mm scale at 110mm high needs a ramp to be useable at 1.1 – 1.2 m long making the whole system approximately 2.4m
- A drop center with a 1200mm x 1200mm weigh section takes up 150mm more in width for the side pods housing the load cells but the scale and ramp is now only 1700mm long as the height of the weigh section is only 50mm.



**Options Include**

Painted Steel

Stainless Steel

**PL3000DC-S**

**PL3000DC-LL** is designed around the food and health areas where cleaning under the platform scales is essential. The ramps can also be designed to have a lifting top or as they are lighter can be physically lifted.

PL3000-LL-S

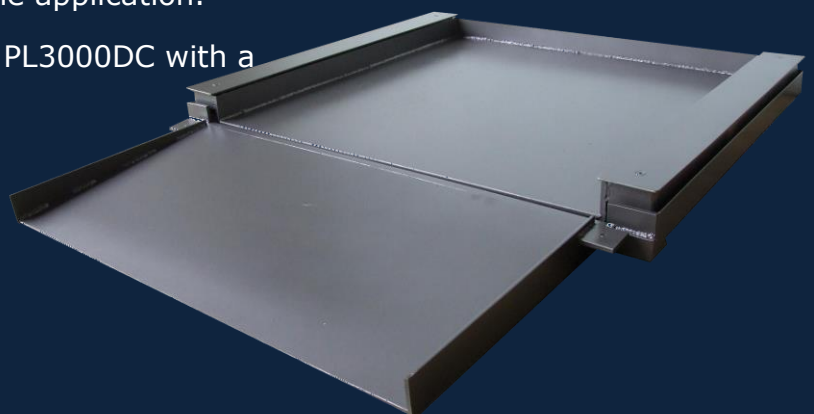


The **PB3000DC** is designed for pallet jack access to Platform scales. Being a drop centre allows for the ramps of the scale to be as low as possible to reduce the length required for manual handling of the product onto the scale.

Designed around the floating deck system also gives this type of scale to have side loading protection on the load cells. The PB3000DC is one of the most common custom platforms to ensure it suits the application.

The drop centre is also available in a PL3000DC with a Fixed foot arrangement

PB3000DC



### 3. HEAVY DUTY PLATFORM SCALES

Associated Scales is renowned for the floating deck systems. The PB3000 was the first of this range designed.

The **PB3000** is designed around a 2 piece construction to assist in preventing side shunts (normally by forklifts) causing load cell failures by twisting the cells.



PB3000

These types of system have a standard size of 1200mm x 1200mm but a large proportion are manufacture to customers size requirements

As shown on the cross section the system has solid internal structure with the load cell on a ball system to the sub frame. Side shunts have the top frame hitting the sub frame with no loading on the load cell.



PB3000HD Fully Pitted



The **PL3000HD** has been developed for the higher capacity requirements where industries that do not require the protection form the PB3000HD. The PL3000HD is a fixed foot system like the PL3000 but either 2.5t or 5t Large Body shear beams are used. The Frame is designed similar to the PB3000HD inner frame to ensure its rigidity.

The **PB3000HD** is designed around the metal industry or where the scale will be treated in a harsh way through rough loading.

Designed in 2002 for customer who could not keep standard platforms from being damaged, this unit is build to withstand these shocks.



PB3000HD

As like the PB3000 this unit is a Floating Deck system but with a stiffer frame and Sub frame.

The load cells found in the PB3000HD are over rated for the capacity of the system. A capacity of 3000kg or requiring dual range would have 4 x 2500kg and the 6t-10t system have 4 x 5000kg load cells.

The PB3000HD has been designed so well Associated Scale Service offers a full **2 year warranty** on this platform scale. PB3000HD are sold on custom sizes only as most sales require specific dimensions.





## Standard Sizes

Model	Common Capacity	Common Plate Size	Trade
PL3000	2000kg x 1kg 3000kg x 1kg	1200mm x 1200mm	Yes
PL3000DC (& LL)	1000kg x 0.5kg	1000mm x 1000mm	Yes
PB3000DC	1500kg x 0.5kg	1000mm x 1000mm	Yes
PB3000	1500kg x 0.5kg 3000kg x 1kg	1200mm x 1200mm 1200mm x 1800mm	Yes
PL3000HD	3000kg x 1kg 6000kg x 2kg	1200mm x 1800mm 1200mm x 2400mm	Yes
PB3000HD	3000kg x 1kg 6000kg x 2kg	1200mm x 1800mm 1200mm x 2400mm	Yes

**Note with the PL3000, all PB series platforms, the sizes and capacities can be manufactured to customer specifications.**

Dual Range is offered if required by the customer otherwise single range systems are supplied

Warranties include site time and parts but do not cover the travel to site, expenses for remote installation.

## Specifications:

Base Construction	Mild Steel (Standard - Painted) <ul style="list-style-type: none"> <li>• Option - Galvanized</li> <li>• Option - Stainless Steel</li> <li>• Option - Aluminum</li> </ul>
Load Cell Construction	Tool Steel    Option - Stainless Steel
Over Load	All bases have 150% overload protection
Warranty	1 year - Standard 2 years- PB3000HD

## Options on Weight Indicators:



Ricelake 482PLUS  
Wet Area  
Trade Approved



Rice Lake 120PLUS  
Dry Area  
Trade Approved