

NWI
GROUP



**Centurion
Steel**
Weighbridges



**Titan
Concrete**
Weighbridges



www.nwigroup.com.au

www.nwiweighbridges.com.au

**Certified by the National Measurement Institute
(NMI) for Trade Weighing Applications.**

**World-class precision,
locally delivered.**

About NWI Weighbridges

NWI Weighbridges is a division of NWI Group

NWI Weighbridges have been helping to revolutionise Australian industry with weighbridges since 2010.

Our vehicle weighing products and solutions range from full legal-for-trade weighing systems, to axle weighing pads and weighbridge automation software.

When you choose NWI Group for your vehicle weighing solution, you're partnering with a family-owned and operated business that brings decades of experience and expertise to every project. You're not just selecting a supplier; you're gaining a trusted partner who prioritises your success with exceptional service and frontline technology.



**Centurion
Steel**
Weighbridges



**Titan
Concrete**
Weighbridges

Who should choose The Centurion Weighbridge?



The Centurion Weighbridge is an excellent choice for businesses and industries that require a robust, reliable, and accurate weighing solution. Its above ground design makes it particularly suitable for sites with sufficient space and where minimal civil work is preferred.

For logistics and transportation companies, the ease of installation and maintenance, coupled with high precision, ensures efficient and reliable weighing of vehicles, enhancing operational efficiency.

In agriculture, the Centurion Weighbridge can handle heavy loads with precision, making it ideal for weighing large quantities of produce or livestock, ensuring accurate measurements for fair trade and inventory management.

Construction sites benefit from the Centurion's sturdy build and dependable performance, providing accurate weight measurements for heavy machinery and materials, which is critical for project planning and safety compliance.

Who should choose The Titan Weighbridge?



Titan Concrete deck Weighbridges are particularly well-suited for industries and applications that demand durability, high load capacity, and minimal maintenance.

In industries like mining, the high load-bearing capacity and durability of concrete make it ideal for the rugged and demanding conditions of mining operations.

For waste management for instance, the durable concrete platform can withstand the varied and potentially abrasive nature of waste materials, ensuring longevity and consistent performance.

NMI Legal-for-Trade

The Centurion Steel Deck Weighbridge

How does it work?

The strongest steel deck weighbridge on the Australian market today

The Centurion Steel Deck Weighbridge is engineered and designed in Australia to withstand the country's harsh environmental and operational conditions, making it the strongest and most robust steel deck weighbridge available on the market.



**Centurion
Steel
Weighbridges**



Features and Benefits

- ✓ Designed and engineered in Australia to suit our harsh environmental and operational conditions.
- ✓ NMI Pattern Approved for trade weighing applications
- ✓ Available in both painted and hot dip galvanised versions.
- ✓ Unique design to help prevent debris build up and ease of service and maintenance.
- ✓ Transportable solution.

Innovative Weighbridge Construction

The Centurion Weighbridge boasts a distinctive design that places the load cells away from the end-wall. As a result, the accumulation of dirt and debris at the end-walls, which could potentially interfere with the weighing process, is prevented. This ensures accurate and reliable weight measurements every time.

The Centurion Weighbridge's design prioritises ease of service. Its large cover plates enable maintenance and repairs to be performed from the top of the scale instead of from underneath, streamlining the process and reducing the need for extensive disassembly.



NMI Legal-for-Trade

The Titan Concrete Deck Weighbridge

How does it work?

Built to withstand very high concentrated loads and high traffic use

Designed and engineered in Australia to suit our harsh environmental and operational conditions. Transportable solution. NMI Pattern Approved for trade weighing applications. Available as both Above-Ground and In-Ground Pit installations.



**Titan
Concrete
Weighbridges**



Weighbridge Construction

A fully welded universal beam structure with horizontal supports along the length of the weighbridge deck to avoid twisting. Thanks to its modular deck design, the Titan is ideal for both permanent and temporary installations. Each modular deck uses only 4 or 6 loadcells, reducing both electronic liability and out of warranty maintenance costs.

Features and Benefits

- ✓ Concrete is highly resistant to weather conditions, corrosion, and heavy usage, ensuring a long service life with minimal wear and tear.
- ✓ Less maintenance compared to steel. There is no need for frequent painting or treatments to prevent rust, making it more cost-effective in the long run.
- ✓ Engineered, designed and manufactured in Australia using Australian made steel, the Titan meets all relevant Australian standards.
- ✓ Each modular deck uses only 4 or 6 loadcells, reducing both electronic liability and out of warranty maintenance costs.
- ✓ The stability provided by a concrete deck minimises vibrations and movements, leading to more accurate weight measurements.
- ✓ Available in both painted steel or hot dip galvanised steel.



Multi-Deck Weighbridges

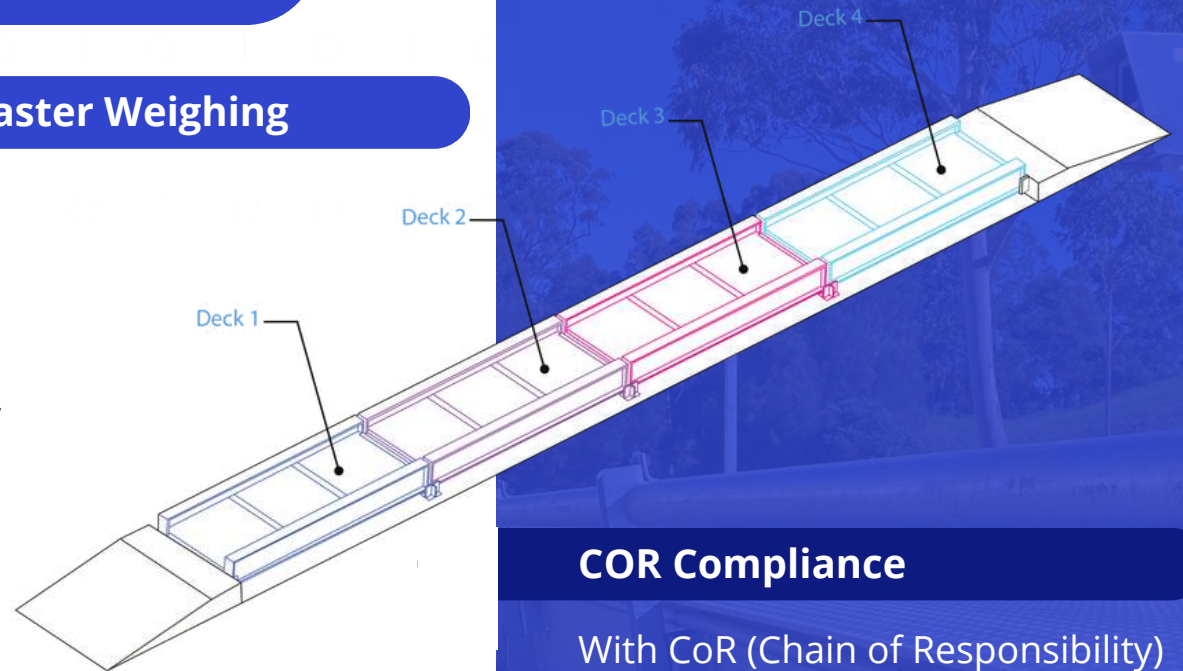
Benefits of Multi-Deck Weighbridge for Faster Weighing

NWI Group's latest Titan weighbridge design highlights the company's continued innovation in the development of legal for trade vehicle weighing equipment, gained from extensive experience and consultation with industry over the past two decades.

Improved Reliability

Multi-deck weighbridges can provide greater accuracy and reliability in weighing, as each platform can be calibrated and maintained independently. This ensures that the weight readings are as accurate as possible, reducing the risk of errors and ensuring compliance with regulatory requirements.

Multi-deck weighbridge configurations also allow for faster weighing. With multiple platforms, vehicles can be weighed simultaneously, reducing the time needed to weigh each vehicle and improving overall efficiency. This can be especially beneficial for high-volume weighing operations, such as those in the transportation or logistics industries.



COR Compliance

With CoR (Chain of Responsibility) becoming increasingly more important for drivers and companies to monitor, NWI Group have developed their Titan Weighbridge as a simple modular design that allows for a cost effective multi-deck configuration that is trade approved so a complete truck can be weighed at the same time as it's axle group weights for CoR compliance.

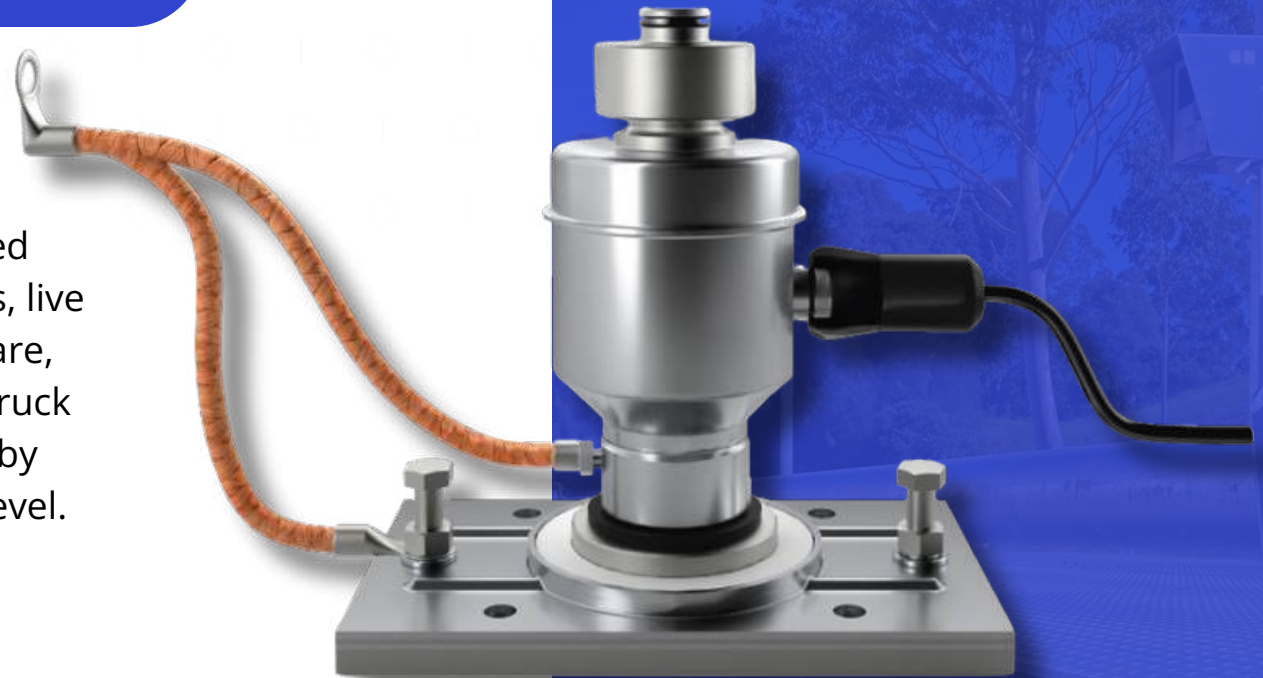
Loadcells

CPD Digital

NWI Group harnesses the power of advanced technology through fully digital components, live monitoring systems and cloud-based software, bringing you the smartest, most advanced truck scales on the market. CPD Digital, powered by Bilanciai Nexia, takes weighing to the next level.

Advantages

- **DATA** - CPD-M Digital load cells house a nexus of information, allowing for continuous monitoring of temperature, voltage, inclination and many other variables sent directly to the cloud.
- **ACCURACY** - Deliver optimised weighing results in less than a hundredth of a second and at small increment measurements – twice the precision of analog scales.
- **ACCESS** - With portal access from anywhere, you can rely on CPD Digital information to be there when you need it most.



Weighbridge Servicing and Calibration

NWI Group are one of Australia's leading specialists in weighbridge and heavy industrial equipment calibration. With locations all over Australia, we're able to help with difficult applications wherever you are.

To maintain accurate and reliable weighing results, it's essential to periodically test your vehicle scale in accordance with the manufacturer's specifications and industry and legal standards. By using NWI to attain your calibration certificates, you'll have access to a documented record of compliance, ensuring that you meet all necessary regulatory requirements.



Weighbridge Upgrades

Our Weighbridge Upgrade Services offer a cost-effective way to increase the longevity and performance of your existing vehicle scale. We'll inspect your scale to assess if upgrading or repairing damaged components and upgrading electronics is a feasible and cost-efficient option for you.

We'll provide you with a comprehensive analysis of the work that needs to be performed and an objective assessment of the costs involved. By considering upgrading and repairing damaged components rather than investing in a new scale, you can save money while still improving the performance and longevity of your weighing system.



FlexPoint WinWeigh
Waste Facility Software

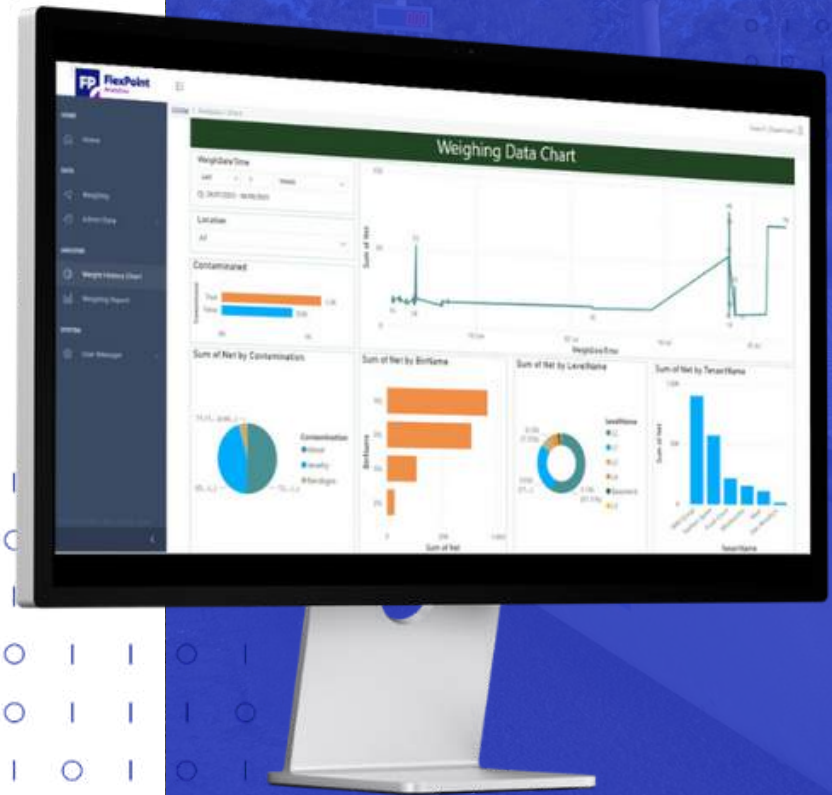
Weighbridge Automation Software

FlexPoint WinWeigh for Waste Facilities enables you to get the most out of your Waste Facility operations.

Our industry leading software turns a weighbridge from a scale into a fully-customised management system that suits your site and requirements.

For councils and waste management companies that run multiple facilities, FlexPoint WinWeigh stands as the modern cloud-based platform for waste weighbridge management, ensuring high availability, security, and integrity while granting seamless access to essential data.

This solution allows multi-site facilities to have a comprehensive overview of all operations and drill down to see specific information on individual sites.



The NWI logo consists of the letters 'NWI' in a bold, black, sans-serif font, centered within a white square. The background of the entire advertisement is a blue-tinted photograph of a weighbridge structure with large metal rollers and a textured platform.

NWI

Weighbridges

World-class precision, locally delivered.

Sydney | Melbourne | Adelaide | Brisbane | Perth

www.nwigroup.com.au | www.nwiweighbridges.com.au

1300 669 162