

monitor

the world's
best equipment
supported
locally

Sales | Service | Parts | Hire | Finance

CMC S18F Spider Lift

1800 025 024
monitor.net.au

@MonitorAUS



V1.0 - 250304



CMC S18F

monitor
Access



The CMC S18F is the most advanced of the new F-Series, featuring full hydraulics with one pantograph, two telescopic boom extensions, and an articulating jib.

With an incredible 11.15m of horizontal outreach and a 230kg basket capacity, the S18F is an ideal machine for arbor work, property maintenance, painting, and more.

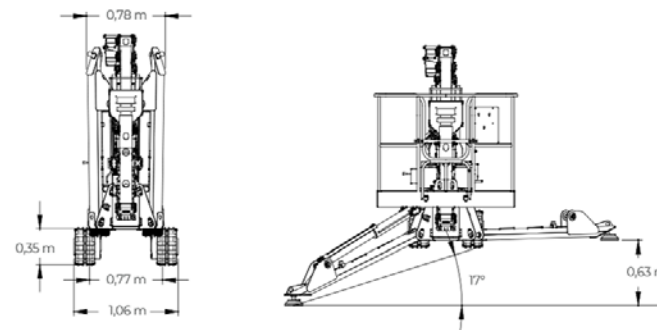
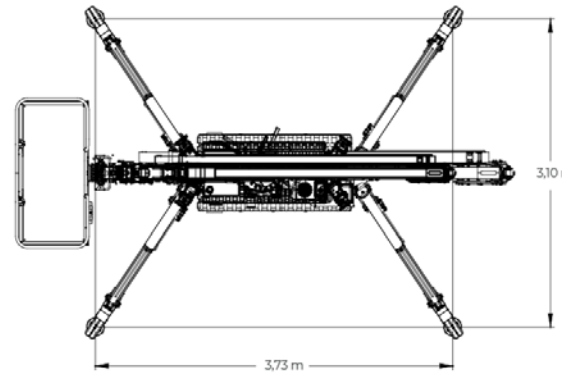
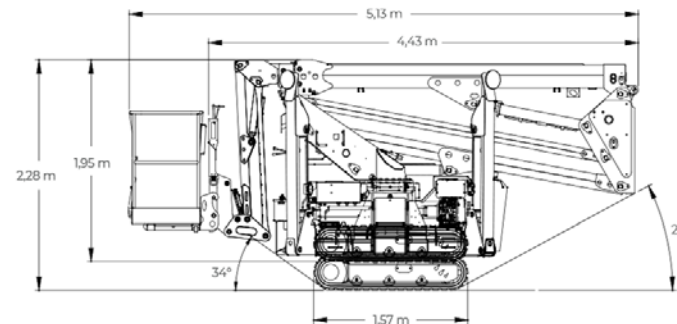
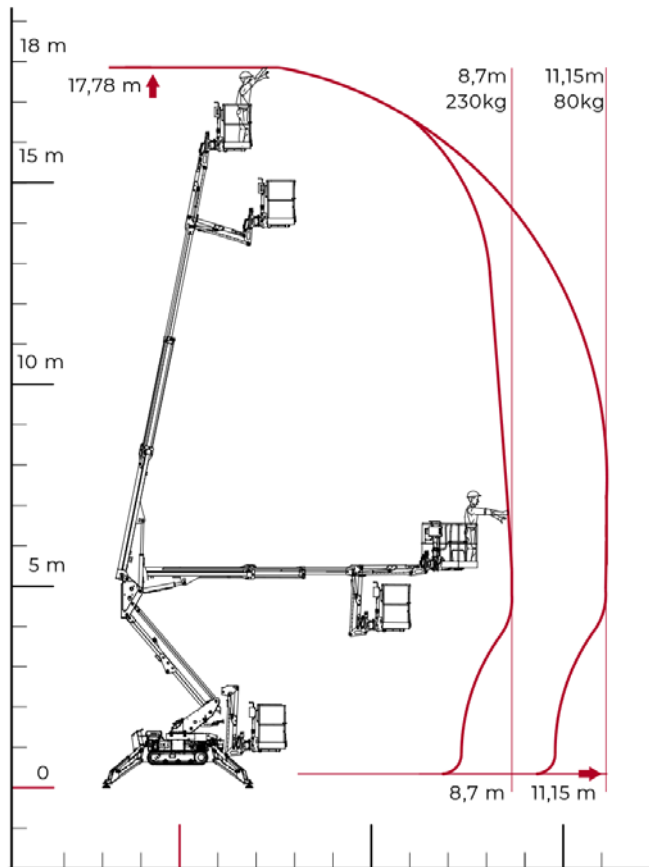
With a user-friendly design, the S18F is towable on a 3.5T GVM trailer, thanks to a weight of only 2523kg, and yet still has the ability to fit through a standard doorway, making this the ideal machine size for many industries.



17.78m
WORKING HEIGHT



Technical Specifications



Max working height	17.78 m
Max platform height	15.78 m
Max horizontal outreach (with 80 kg)	11.15 m
Max rated capacity	230 kg
Weight	2523 kg
Basket dimensions	1.4 x 0.7 x 1.1 m
Basket rotation	±90° (options)
Turret rotation	±178° (356° non-continuous)
Standard engine	Honda 13 HP Petrol & 240V Electric Motor
Expanding tracks	Std
2-Speed drive	Yes
Drive controls	Curly Cord Remote

(All specs E&OE and subject to change)





—
**minimised
downtime
guarantee***
—



Our Locations

Branches & Service Centres



Tamworth

143 Gunnedah Rd
Tamworth NSW 2340



Sydney

49-50 Cassola Pl
Penrith NSW 2740



Melbourne

24-28 William Rd
Dandenong South VIC 3175



Brisbane

191 Magnesium Dr
Crestmead QLD 4132



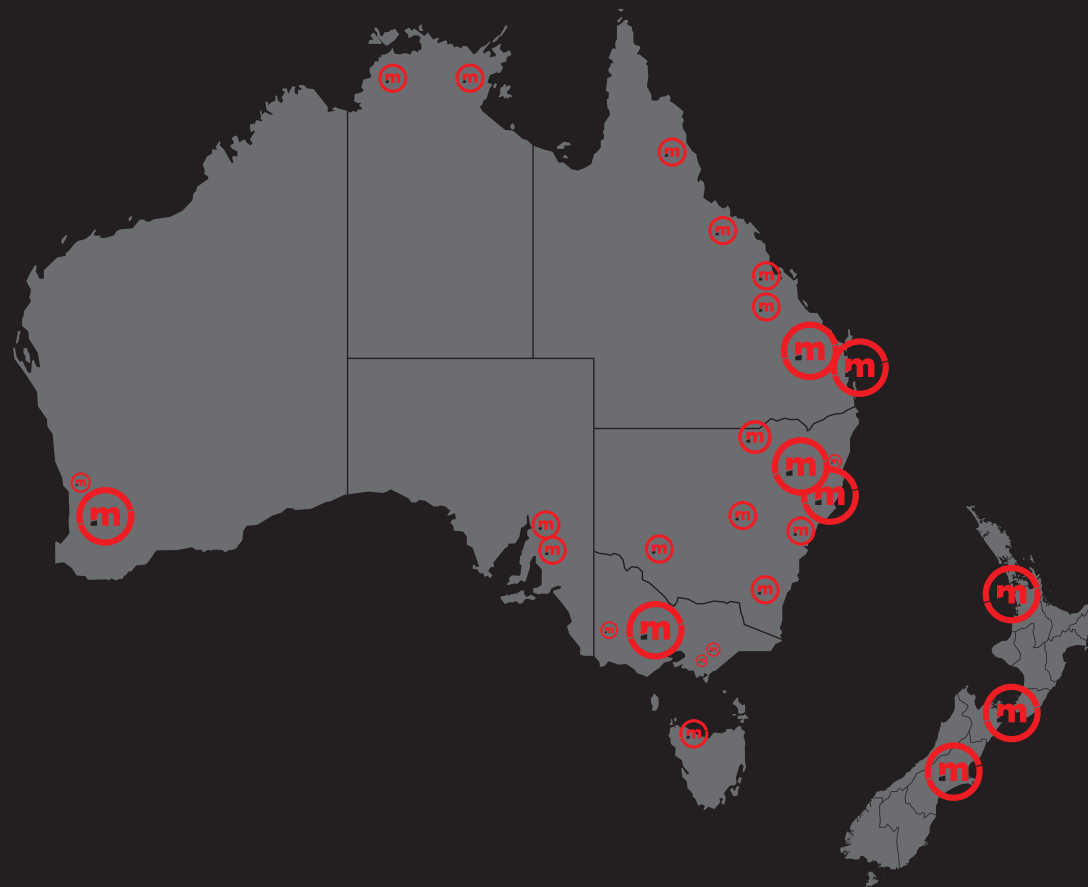
Brisbane - Caboolture

2 Alta Road
Caboolture QLD 4510



Perth

11 Reihill Rd
Maddington WA 6109



agent@monitor.net.au

1800 025 024
monitor.net.au

@MonitorAUS



monitor

the world's best equipment supported locally

CMC S18F Spider Lift

7