

Easy Disposal Of Dog Waste

- ✓ Automatic, timed disposal
- ✓ Easy connection to drainage, electricity and water
- ✓ Capacity virtually unlimited
- ✓ Stainless steel construction
- ✓ Safety interlocks



Disposal of dog waste is considered a nuisance and often a health hazard. The Whoopsie Away simplifies this process and reduces your operational costs!

Commercial kennels, shelters, government agencies and dog breeding establishments have a much larger problem with dog waste disposal due to the number of dogs concentrated into a small area. The only alternative was disposing as land fill, expensive waste treatment systems or labour intensive trench digging.

The Whoopsie-Away will solve this more unpleasant aspect of keeping dogs in kennels. A specialised disintegrator unit quickly chops up and flushes dog faeces directly into the sewer. The dilution and cutting action ensures there are no blockages and the system can cope with even the largest establishment.

Installed close to the kennels or dog runs the Whoopsie-Away will unobtrusively dispose of dog faeces. To initiate disposal the water supply is turned on, the electric motor started and the dog waste is shovelled or poured into the feed hopper. After disposal the water and motor are switched off.

The new disposer will streamline waste disposal in your kennel and free up operator time for more important work such as taking clients for walkies!

The unique Whoopsie-Away is manufactured in robust stainless steel and long life materials ensuring it will last for years of service.

No more digging pits or paying expensive removal costs for bagged material. Now, with a simple connection to the electrical supply, mains water and waste pipe you can have instant disposal. The powerful disintegrator motor makes short work of dog waste problems.

NOTE:

The Whoopsie-Away is classified as a trade waste device and therefore the facility owner must apply to the local authorities for approval to install the Whoopsie-Away by trade of a Trade Waste License.

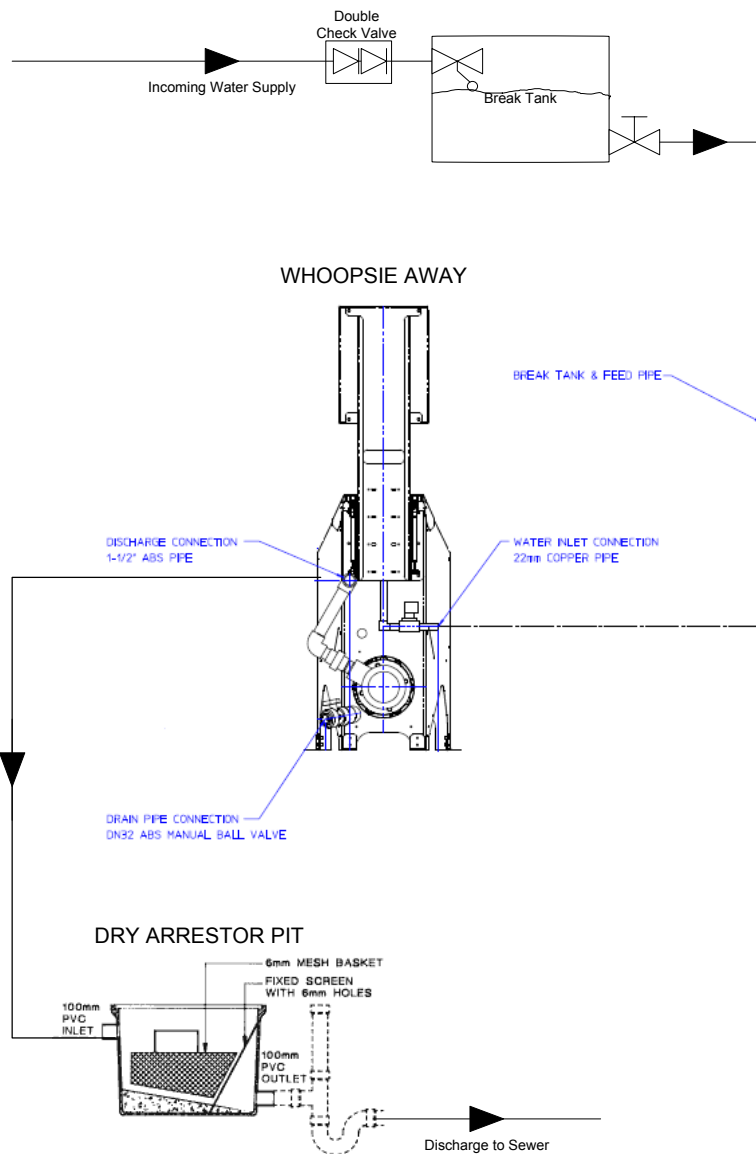
To make it trouble-free for you Therian can assist you with the application for a Trade Waste Licence with your local authorities.



Siemens Control Panel



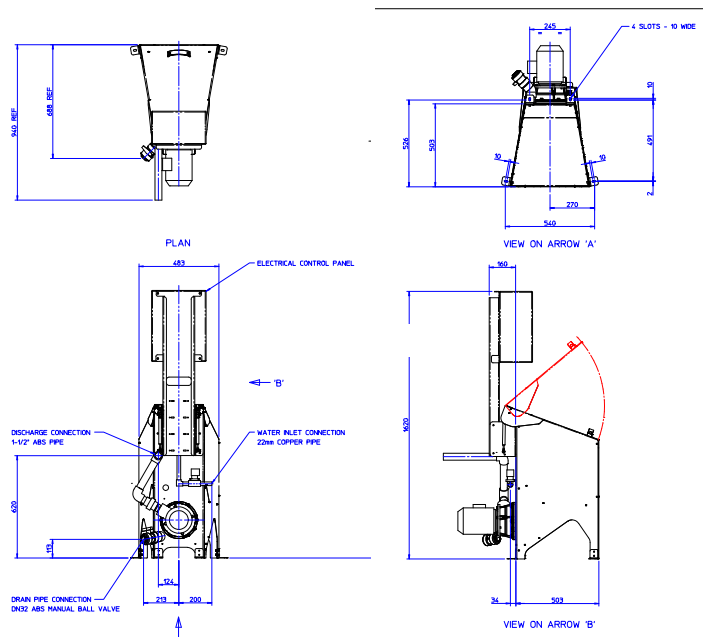
View inside macerator



Water connection diagram

Built To Last

- Fast disposal of dog waste
- Ideal for small and large kennels
- Convenient waste high hopper
- High performance electric motor
- Simple automatic operation
- Cost efficient - uses cold water only
- Allows more time for dog care



Unit dimensions

1. Operating Costs – What is the operation cycle time of the Whoopsie Away and electricity consumption over this period? Also, how much water is used? *The cycle time is set at 6 minutes and the motor is 0.75 Kw. The water flow rate can be adjusted but typical flow rate is 25 litres per minute.*
2. What is the recommended maintenance period for the unit and the cost per period? *Other than checking interlocks and removing any wrong items from the bottom of the tank no maintenance is required.*
3. What is the expected product life expectancy? *10 - 15 years*
4. Is there a video available on the operation of the Whoopsie Away? *Yes, there is a short video on the Therian website at therian.com.au which shows how to load and start the Whoopsie Away.*
5. Do you have any testimonials from clients who have installed the Whoopsie Away into their facility? *Lyn Gilman from the Bristol Dogs Home in the UK writes "We are a long standing user of the Whoopsie Away and have had the new Series Two model installed for the last two years. This has been extremely reliable with the added benefit of a timer, which automatically stops after disposal which is a big improvement over the previous model. I really do not know how we would cope without the Whoopsie Away for disposing of our large volume of dog waste."*
6. Do you provide an Installation and Operation Manual with the unit? *Yes, there is a detailed Installation, Operation and Maintenance Manual supplied with each Whoopsie Away unit sold.*
7. Do you have a drawing of the unit available to assist with sizing details and connections to the Whoopsie Away? *Yes, please refer to the inside of this brochure.*
8. What is the expected time for delivery from order placement? *Manufacturing is approximately 5 weeks from placement of order and shipping time to any Australian port is approximately 45 days.*
9. Do you have the Whoopsie Away brochure available online? *Yes, this can be found on the Therian website at therian.com.au*
10. Does the Whoopsie Away have WaterMark Certification? *No, the Whoopsie Away does not require WaterMark Certification as it is classified as a Trade Waste device. The facility owner must apply to their local authorities for approval to install and operate the Whoopsie Away by way of a Trade Waste License. To make it trouble free for our clients, Therian can assist you with the application for a Trade Waste License with your local authorities. Please note that each local authority has their own Trade Waste License process and not all authorities will grant permission to install and operate a Whoopsie Away unit.*
11. What warranty is provided for the Whoopsie Away? *There is a 12 month parts only replacement warranty offered by the manufacturer.*
12. Who installs the Whoopsie Away? *The unit is shipped directly to the clients facility. The installation of the Whoopsie Away and connection of water, sewer and electrical are required to be completed by suitably qualified and licensed plumbers and electricians. These trades need to be arranged by the client.*
13. What is the typical size of the suspended solids that pass through the Whoopsie Away into the sewer? *The waste becomes a liquidated form containing solids broken down into 5mm square pieces or less.*
14. What are the typical values that have been experienced for biochemical oxygen demand in the waste water to sewer? *We do not have BOD values for the Whoopsie Away however we do not believe by the time the waste reaches the sewage works it would significantly change the average BOD value of 480 mg / litre.*

Should you require any further information on the Whoopsie Away, please contact Therian

FREECALL 1800 251 766