

Feltes - Portable Aluminium Gantry Cranes



**Capacity
1500 Kg**





Available in three models:

- **Folding**
- **Static**
- **Moveable**

German designed, each model provides an optimal balance between portability, ease of use and load bearing ability, providing the user with maximum flexibility in meeting their lifting requirements.

Each model can be disassembled for ease of transportation and quickly reassembled in just 5 minutes.

The aluminium beams range from 2 to 5 metres (loads to 1,500 kg) and 6 metres (Up to 1000 kg).

Quick Mounting Folding Gantry

This model has folding lateral stands making the crane easy to move, transport and store.

Three sizes are available:

Mini (height of lift to 2.1 m);

Standard (height of lift to 3.0 m);

Maxi (height of lift to 4.0 m).





Static Aluminium Gantry

The Static Model has rigid side frames and is available in two models: Standard and Mini.

Standard - Capacity 1,500 kg

Internal width:	4.00 m
Total weight:	100 kg
Width of lateral stand:	1.65 m
Height of lateral stand:	2.00 m
Height for hanging hoist:	1.80 m to 3.00 m

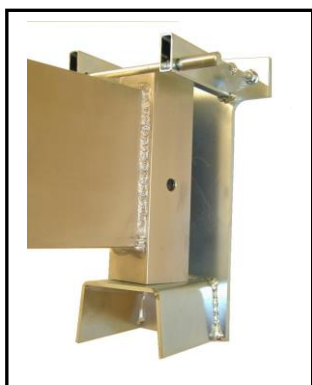
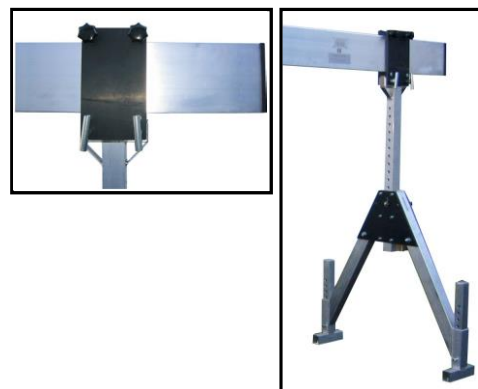
Capacity 1,500 kg

Internal width:	4.00 m
Total weight:	80 kg
Width of lateral stand:	1.12 m
Height of lateral stand:	1.55 m
Height for hanging hoist:	1.00 m to 2.10 m



Horizontal Adjuster

All models are available with a horizontal adjuster, making it possible to insert a support before the end of the carrier beam. This means you can vary the length of the slide, which may be required when space is restricted.



Wall Bracket

An optional wall bracket is also available to support one end of the crane. Applications may include positioning the crane over a door or access area. The wall bracket provides limited swivelling of the crane.



Moveable Aluminium Gantry Crane

Moveable under load with a horizontal adjuster included



Specifications:

- | | |
|---------------------------------|-----------------------|
| • Carrying capacity: | 1,000 kg |
| • Carrier length: | 4.23 m |
| • Internal width: | 4.00 m |
| • Width of lateral stand: | 1.53 m |
| • Height for hanging the hoist: | from 1.88 m to 2.83 m |
| • Total weight: | 120kg Approx. |

Optional wheel sets are also available for attachment to the static models if required.