

Sonosite PX

Advanced image clarity and confidence



Any patient. Anywhere. Anytime.

See more. Do more. Sonosite PX

Advanced image clarity **and confidence**

Inspired, informed, and improved by thousands of hours working side-by-side with clinicians on the front lines of medicine, Sonosite PX point-of-care ultrasound system incorporates our most advanced image clarity to give clinicians an advanced level of confidence for diagnostic and procedural applications.

This isn't just our most advanced point-of-care ultrasound solution ever, it's yours.



Designed for the human touch

The human touch is crucial when it comes to point-of-care ultrasound. That's why Sonosite PX has been designed around every detail for the way clinicians work and deliver care.

Touch and physical controls

Intuitive touch panel and physical buttons for quick access to the most-used controls. Unique raised buttons allow clinicians to make adjustments via feel. Sonosite PX can be operated with gloves and a sterile drape.

Workflow efficiency features

The streamlined user interface improves workflow, allowing clinicians to find controls quickly with fewer touches. Exam types are optimised with most-needed annotations and calculations.



Get closer at the point of care

We listened and listened some more, working with clinicians across the globe. Sonosite PX was created and inspired by the way they need to deliver care, wherever they deliver it.

Adaptable positioning

Adaptable horizontal to vertical work surface allows clinicians to adjust Sonosite PX for optimal bedside ergonomics and bring it closer to the bedside.

Closer access

The low-profile wheelbase fits under most beds for closer access, especially important while operating the system across the bed. Front and side levers simplify height adjustments.

Adjustable height

System height can be raised or lowered for a wide range of users.

Adaptable positioning

Work surface adapts from horizontal to vertical with a push or pull of the handle.



Environment inspired.

Optimised for the way you move. The way you think.

The agile, small footprint Sonosite PX stand offers maneuverability and dedicated features to keep your system organised and stocked with the essentials.

Data management and connectivity

Wifi, Ethernet port, 1080p digital video output compatible with 1080p displays, (4) USB 2.0 ports, (2) USB 3.0 ports, (1) dedicated USB port for optional printer.[†]

Durable transducer holders

Integrated holders (no more cups) for simplified clean up and ease of use.

Triple transducer connect

Three transducer ports so your most-used transducers are at the ready with the touch of a button.

Versatile storage solutions

The flexible storage system adapts to left or right side needs—gel holder, wipes holder, storage bin, and lockable drawer to secure supplies.

Cord management

Power cords are confined within the column to help prevent tangles.

Cable management system

Cable catcher and hooks help prevent tangled transducer cables. Even at the lowest stand height, cables are less likely to drag on the floor.

Low-profile wheeled base

The low-profile wheel base helps position the system close to the bedside.



Peripheral accessories

Barcode scanner

Save time by automatically linking patient data to the ultrasound scan. English only, where available.

Barcode expressions

Auto-populate physician ID and patient information with customised software for your Sonosite Barcode Scanner. English only, where available.

Sonosite ECG module

The 3-lead Sonosite ECG Module connects directly to Sonosite PX ultrasound system through a dedicated ECG port. It allows the system to display an ECG trace on the clinical monitor. Includes ECG lead wire set.

Medical grade printer

Add the optional Black and White Printer to print ultrasound studies.

Needle guide starter kits

Improve positioning to help guide needles to an exact target on the first attempt.

PowerPark cordless charging station

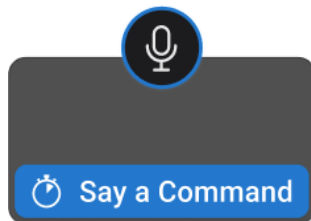
Dock the system in a central location while the battery charges for cord-free use. Cord-free use eliminates power cords dragging on the floor, risking contamination. No power cords to clean and disinfect.

[†] Off the stand, Sonosite PX has (2) USB 3.0 ports.



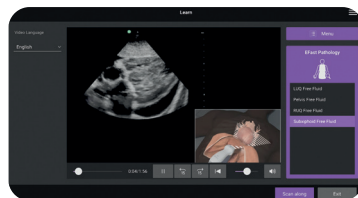
Integrate medical informatics

Synapse Synchronicity workflow manager supports seamless credentialing, quality assurance, and billing. Compile data from all connected point-of-care ultrasound systems into a central location.



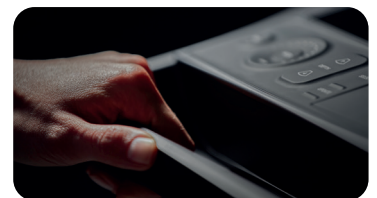
Voice assist

Hands free system controls for common modes and features providing you the ability to complete procedures without assistance or in a sterile environment.



Education at your fingertips

Sonosite is dedicated to clinician education. More than 150 scan-along education tutorials are onboard for COVID-19, diagnosis, procedures, pathology, and system and transducer use.



Rest assured with data security

Sonosite PX includes robust security features to keep patient information safe and networks secure. The system meets FIPS199, FIPS200, and NIST 800-53.

Scan with confidence

Transducers designed and manufactured by Sonosite undergo rigorous testing in-house. Our transducers aren't only durable, they're also made for superior imaging in the most demanding environments.

- IPX7 rated for immersion*
- Drop-tested to 1 metre
- Sonosite-manufactured transducers are covered by a Sonosite 5-year standard warranty

Optional needle guide starter kit

- CIVCO Infiniti Plus™ In-Plane Ultrasound Needle Guide
- CIVCO AccuSITE™ Out-of-Plane Ultrasound Needle Guide
- CIVCO Disposable Endocavity Needle Guide

Available Transducers



C5-1 ●

5-1 MHz Curved

Scan depth: 4.7-30 cm

Exam types:

Abdomen, Gynaecology, Lung, Nerve, Musculoskeletal, Early Obstetrics, Obstetrics, Procedural Abdomen, Spine, VExUS



C10-3 ●

10-3 MHz Curved

Scan depth: 3-18 cm

Exam types:

Abdomen, Gynaecology, Lung, Nerve, Musculoskeletal, Spine, VExUS



P5-1

5-1 MHz Phased

Scan depth: 5-35 cm

Exam types:

Abdomen, Paediatric Abdomen, Cardiac, Paediatric Cardiac, Focused Cardiac, Lung, Obstetrics, Orbital, Transcranial, Doppler (TCD), VExUS



P11-3

11-3 MHz Phased

Scan depth: 2-15 cm

Exam types:

Neonatal and Paediatric Cardiac, Neonatal and Paediatric Lung, Neonatal and Paediatric Abdominal, Neonatal Cephalic



L12-3 ●

12-3 MHz Linear

Scan depth: 1.5-9 cm

Exam types:

Arterial, Breast, Carotid, Lung, Musculoskeletal, Nerve, Ophthalmic, PIV, Superficial, Venous



L13-6

13-5 MHz Multi

Scan depth: 1-6 cm

Exam types:

Musculoskeletal, PIV, Superficial, Venous



L15-4 ●

15-4 MHz Linear

Scan depth: 1.5-6 cm

Exam types:

Arterial, Breast, Carotid, Musculoskeletal, Nerve, Superficial, Venous



L19-5 ●●

19-5 MHz Linear

Scan depth: 1-6 cm

Exam types:

Arterial, Lung, Musculoskeletal, Nerve, Ophthalmic, PIV, Superficial, Vascular Access, Venous



IC10-3 ●

10-3 MHz Curved

Scan depth: 3-15 cm

Exam types:

Gynaecology, Early Obstetrics, Obstetrics, Prostate



T8-3**

8-3 MHz Multi

Scan depth: 4-18 cm

Exam types:

Cardiac, Cardiac Resuscitation, Lung

* Protected against water immersion for 30 minutes at a depth of up to 1 metre.

** 1-year warranty

Anaesthesia

Procedural Support

For clinicians working at the leading edge of ultrasound guided anaesthesia and diagnostics, Sonosite PX incorporates our most advanced image clarity to help clinicians diagnose and more accurately visualise sonographic landmarks for anatomical certainty during procedures.



Critical Care

Caring for the Critically Ill

Allowing clinicians to effectively assess cardiac function and fluid volume status with optimal frame rates, and simplified VExUS scoring calculations. Sonosite PX provides cardiac functionality that supports all levels of users, from novice to advanced. The streamlined user interface improves workflow, allowing clinicians to find controls quickly with fewer touches. Imaging is optimised for each exam type to minimise adjustments, improving time to diagnosis.



Emergency Medicine

Inclusive Workflow

Sonosite PX adapts to the way you provide emergency care. The streamlined user interface improves workflow, with touch and physical buttons providing access to the most-used controls for improved efficiency. The T8-3 transeosophageal transducer paired with our cardiac resuscitation and lung exams increases capabilities for physicians working at the leading edge of ultrasound in Emergency Medicine.



Musculoskeletal

Confidently diagnose and treat patients in real-time.

Immediate in-clinic visualisation helps physicians connect with patients to demystify treatment needs and improve patient satisfaction. Sonosite PX supports accurately visualising fine anatomical details and assisting physicians to confidently diagnose and treat patients in real-time. With a single system interaction, the Auto Steep Needle Profiling helps physicians accurately guide needles for more precise injections, including injections into the delicate spaces between joints.



Why Sonosite PX:

Sonosite ensures the security and privacy of its devices as well as the integrity of patients' Protected Health Information (PHI). The Manufacturer Disclosure Statement for Medical Device Security (MDS2) provides us a way to communicate with you in a standardised language for security. Whenever a new cyber security vulnerability is identified, we'll keep you informed of any potential impact to Sonosite systems through updates on our website. Sonosite PX meets FIPS199, FIPS200, and NIST 800-53

FUJIFILM SONOSITE
Value from Innovation

FUJIFILM Sonosite, Inc.
Worldwide Headquarters
21919 30th Drive SE, Bothell, WA 98021-3904
Tel: +1 (425) 951 1200 or +1 (877) 657 8050
Fax: +1 (425) 951 6800 sonosite.com

FUJIFILM Sonosite BV
European Headquarters
Joop Geesinkweg 140, 1114 AB Amsterdam, Netherlands
Tel: +31 20 462 0000

Sonosite Worldwide Offices

FUJIFILM Sonosite Australasia Pty Ltd: Australia . . . 1300 663 516
FUJIFILM Sonosite Australasia Pty Ltd: New Zealand 0800 888 204
FUJIFILM Sonosite Canada Inc. +1 888 554 5502
FUJIFILM Sonosite GmbH-Germany +49 69 80 88 40 30
FUJIFILM Sonosite Iberica SL-Spain +34 91 123 84 51
FUJIFILM Sonosite India Pvt Ltd +91 124 288 1100

FUJIFILM Sonosite Ltd-United Kingdom +44 1462 341 151
FUJIFILM Sonosite SARL-France +33 182 880 702
FUJIFILM Asia Pacific Pte. Ltd. +65 6383 9933
FUJIFILM (China) Investment Co., Ltd +86 21 5010 6000
FUJIFILM Medical Co., Ltd.-Japan +81 3 0418 7190
FUJIFILM Middle East (FZE) +971 4 887 8722

Any patient. Anywhere. Anytime.

SONOSITE and the SONOSITE logo are registered and unregistered trademarks of FUJIFILM Sonosite, Inc. in various jurisdictions. FUJIFILM is a registered trademark of FUJIFILM Corporation in various jurisdictions. All other trademarks are the property of their respective owners.

Copyright © 2024 FUJIFILM Sonosite, Inc. All rights reserved. Subject to change.

MKT03426_ANZ Rev J 09/2024