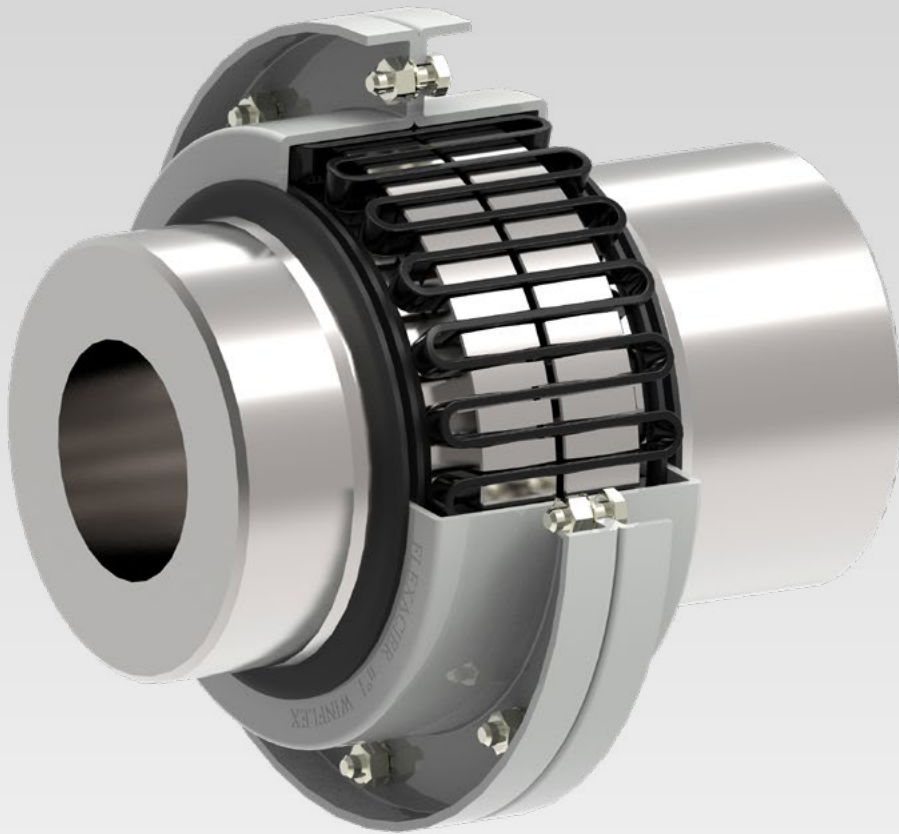




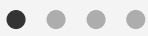
FLEXIBLE COUPLING

Winflex®



www.cmd-couplings.com





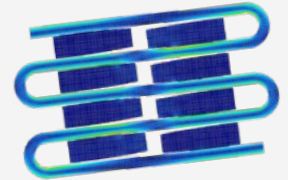
Technical Description

The winflex coupling offers the best value for money. Many years of experience are behind the perfection of this coupling. Made of 100% steel, it can be used in severe conditions (-20°C/+110°C). Due to the special profile of the grooves, the pressure between the spring and the hub remains constant. The contact area between the spring and the hub increases proportionally with the increase of load. The torsional stiffness is progressive.

The large number of teeth and the elasticity of the spring make it possible to absorb any over-torque or shock efficiently and without damage. No significant reaction on the bearings thanks to the "floating" mounting of the cover and spring grid.

The strain on the spring is always in the direction of the fibres of the material and within its elastic range.

Surface treatment prevents oxidation, improves friction and reduces wear. Longer life cycle (based on CMD recommendations in the winflex T assembly, Lubrication and Maintenance Manual, for intervals between two maintenance operations of up to 40,000 hours or 5 years).

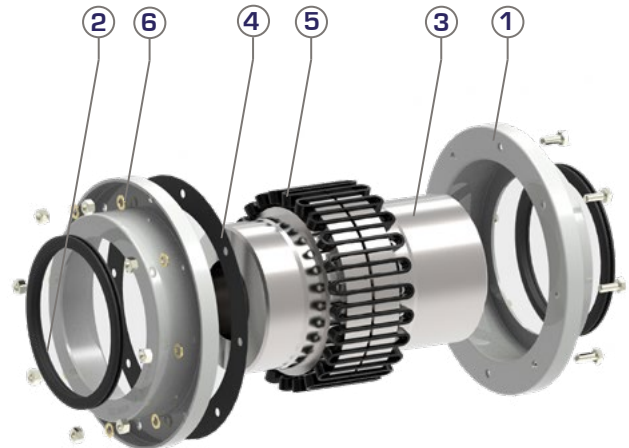
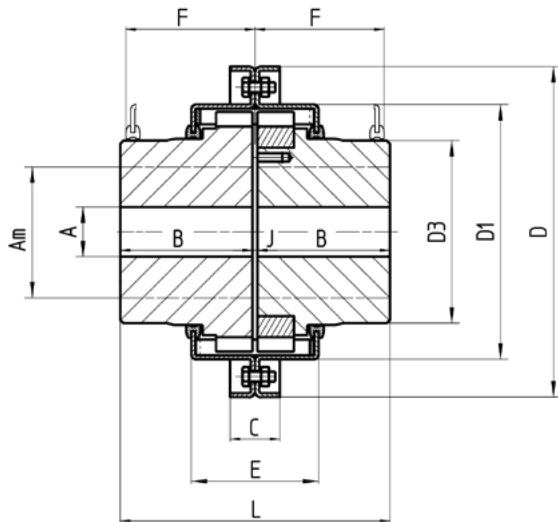


Applications

	SF
<i>Centrifugal mixers, pumps, ventilators and compressors, converter groups without overload...</i>	1*
<i>Rotary compressors, bucket conveyors, positive displacement pumps, elevators...</i>	1,25
<i>Paper mills, rewinders, unwinders, uniform load conveyors, cane mills with turbines and speed reducers...</i>	1,50
<i>Hammer mills, handling cranes, punching machines, presses, circular saws, planers, calenders...</i>	1,75
<i>Small and medium cement kilns, wire rolling mills, calenders, converter units with overload, slicers, inclined or unevenly loaded conveyors, rollers, port cranes, drawer benches, shears, cutters, mills, fans for cooling towers...</i>	2,00
<i>Strip mills, defibrators, ball mills, internal and external mixers, rolling mills, cement kilns, kiln loaders, strippers, ingot moulds...</i>	2,50
<i>Pinch rollers, pumps and reciprocating compressors...</i>	3,00

* Only applicable for installation with max. torque less than 1.5 x basic coupling torque.

Dimensions



Number	Part name
1	Half cover
2	Seal
3	Hub
4	Gasket
5	Spring grid
6	Nuts and screws

Size Z to 95
Horizontal or vertical operating position

SIZES		Z	000	00	0	1	2	5	9	16	28	43	70	95
Nominal torque	Nm	90	190	380	950	1900	3800	8500	12500	24000	48000	70000	120000	160000
Key fitting	Am	28	38	55	55	80	110	105	130	180	230	230	230	270
Shrink fitting		-	-	45	45	60	100	90	110	170	200	220	220	250
Stock bore	A	-	-	-	-	-	-	-	-	-	75	85	95	105
B**	T	50	60	60	60	80	80	110	110	130	155	180	200	230
	TL,TL2	-	-	-	110	110	110	170	195	195	225	260	280	300
	C	20	30	30	30	30	30	36	36	42	44	50	50	50
	D	92	130	158	165	200	250	265	307	395	494	595	595	670
	DI	68	88	113	120	154	203	212	253	330	427	522	528	598
	D3	39	51	76	76	110,5	158	146	183	253	330	330	330	380
	E	57	58	58	77	77	78	123	123	124	125	125	200	206
	F	58	59	59	78	78	79	125	125	125	126	126	201	201
	J	2 ⁺¹ _{-0,5}	2 ⁺¹ _{-0,5}	2 ^{+0,5} _{-0,5}	2 ^{+0,5} _{-0,5}	3 ⁺¹ ₋₁	3 ⁺¹ ₋₁	3 ⁺¹ ₋₁	3 ⁺¹ ₋₁	3 ⁺¹ ₋₁	4 ^{+0,5} _{-0,5}	4 ^{+0,5} _{-0,5}	4 ^{+0,5} _{-0,5}	4 ^{+0,5} _{-0,5}
	L	102	122	122	122	163	163	223	223	263	314	364	404	464
Number of segments		1	1	1	2	2	2	4	4	4	6	8	8	8
Number of layers		1	1	1	1	1	1	2	2	2	2	2	2	2
Weight of complete T coupling	Kg	1,84	3,7	6,6	7,8	16,6	31	42	63	125	245	327	409	579
J solid hub T model	Kgm ²	0,0011	0,0037	0,0105	0,0135	0,04	0,14	0,20	0,45	1,5	4,65	8,25	11,5	20,25
Max. speed	Without balancing	4500	4500	3650	3450	2640	1880	1880	1570	1200	920	750	750	650
	With dyn. balancing	-	-	4500	4500	4000	3600	3200	3000	2500	2000	1500	1500	1250
Weight of grease	kg	0,06	0,09	0,11	0,17	0,3	0,35	1	1,3	1,6	1,8	2	4,5	8

** Model : T = 2 short hubs
TL = 1 short hub, 1 long hub
TL2 = 2 long hubs

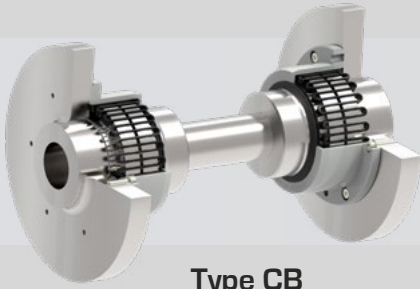
Sizes (in mm) are given for reference only and may be modified without notice.



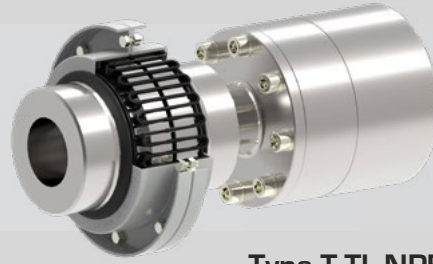
For further INFORMATION or ENQUIRIES:
couplings@cmdgears.com



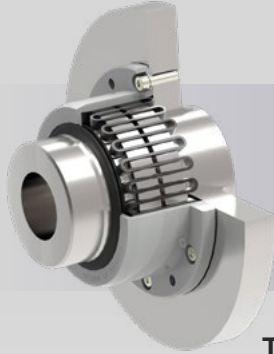
Variations



Type CB
With extended shaft



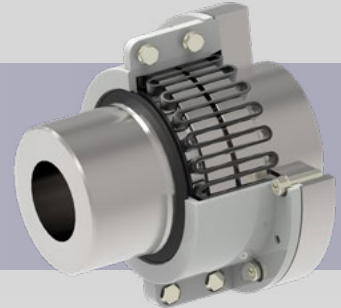
Type T.TL.NPE
With spacer



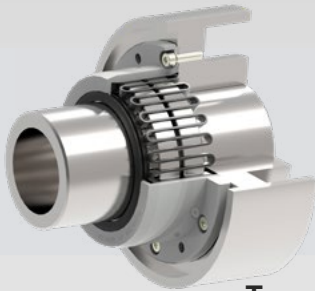
Type BSA/BSAT
With integrated cover, for
adaptation on pulley / flywheel...



Type S
For high torques



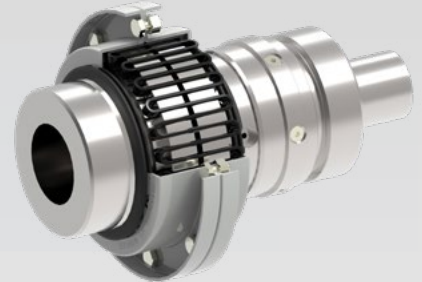
Type JDA/JDAT
With integrated two-part
cover



Type CPF
With brake pulley



Type TDF
With brake disk



Type TADB
Automatically disengageable



French design & manufacture



COMPANY
HEADQUARTERS
& CAMBRAI PLANT
539, Avenue du Cateau
59400 CAMBRAI
FRANCE



+61 (0) 3 9796 4800
@ info@drivesystems.com.au
drivesystems.com.au

Supply & Service of Mechanical Power Transmission Products