



DAVIMAC

CHASER BINS





BUILT FOR AUSSIE FARMS

Davimac machines are known for their quality, longevity and for the integrity of our manufacturing process. They are built tough to minimise maintenance, feature wide, high-speed augers to unload faster, and undercarriages designed to get you between headers and field bins with a minimum of fuss. Our industry-leading designs have delivered efficiency and less worries for over 40 years.

With a wide selection of optional attachments and accessories, our chaser bins are easily customisable to your specific needs. We have partnered with trusted and experienced dealers all over Australia and also offer comprehensive customer service, support, and spare parts, alongside a 12 month warranty, ensuring our customers get the best out of their Davimac Chaser Bin.

As farmers ourselves, headquartered in regional NSW, we have a passion to optimise farming practices. We pride ourselves on innovations that not only make our chaser bins better, but improve your experience in the field. Davimac Chaser Bins have been engineered from the ground up to make your harvest run as efficiently and profitably as possible.

With bold design and tough construction, Davimac Chaser Bins are built for your farm and the harshest of Australian conditions.

SINGLE-AXLE	5
DUAL-AXLE	6
TOP FEATURES	8
AUGER FEATURES	11
STANDARD FEATURES	13
MACHINE OPTIONS	14
SPARE PARTS	16
SPECIFICATIONS	18



SINGLE-AXLE

AT A GLANCE:

- 25 TONNE & 30 TONNE VARIANTS
- 12 TONNE PER MINUTE UNLOAD SPEED
- 40 TONNE AXLE CAPACITY

The tough design of our single-axle chaser bins ensures maximum stability and performance. After months of hard work tilling and sowing, you can be confident your chaser bin will be ready to go and work hard for you during harvest.



MODEL		25T	30T
Bin capacity (Level, not peaked)		25 tonne / 31.93 m ³	30 tonne / 38.45 m ³
Max unload speed		12 tonne/min	
Tyres	Standard	800/65 R32	900/60 R32
	Optional	900/60 R32	-
Wheel centres		Standard 2.56 m, adjustable to 3 m	
Bin side height		3.31 m	
Bin length		6.4 m	7.42 m
Overall length		8.8 m	10 m
Transport width		3.48 m (at 2.56 m wheel centre)	
Empty weight		6.12 tonne	7.8 tonne
Axle capacity		40 tonne	
Drive		PTO or hydraulic	

DUAL-AXLE

AT A GLANCE:

- 30 TONNE & 35 TONNE VARIANTS
- 12 TONNE PER MINUTE UNLOAD SPEED
- 80 TONNE AXLE CAPACITY

The higher capacities of our popular dual-axle models are ideal for handling bumper crops efficiently. The bogie-axle design is built on a walking beam, so the bin can easily move over contours and bumps as well as evenly distributing the load along the length of the chassis.



MODEL		30T	35T
Bin capacity (level, not peaked)		30 tonne / 38.08 m³	35 tonne / 44.39 m³
Max unload speed		12 tonne/min	
Tyres	Standard	30.5x32 18 ply	30.5x32 18 ply
	Optional	900/60 R32	900/60 R32
Wheel centres		Standard 2.56 m, adjustable to 3 m	
Bin side height		3.31 m	
Bin length		7.42 m	8.57 m
Overall length		10 m	11.27 m
Transport width		3.48 m (at 2.56 m wheel centre)	
Empty weight		12.65 tonne	13.3 tonne
Axle capacity		80 tonne	
Drive		PTO or hydraulic	



TOP FEATURES

THAT MAKE DAVIMAC THE BEST

STURDY UNDERCARRIAGE

The Australian-engineered harvest tyres with dual bead construction and heavy ply ratings are attached to the bin with a 12-stud hub axle. Each undercarriage is designed to be incredibly tough, sturdy, and heavy for increased stability.

UNIQUE CURVED SIDES

The distinctive curved sides of a Davimac chaser bin not only look fantastic, but can withstand the stress of a full load without buckling under heavy hauls. Even the trickiest grains won't stick with the high-angle 55° bin sides. You'll get more grain in the silo and less stuck inside the cart.

CUSHION-HITCH DESIGN

Our unique, pioneering cushion-hitch design minimises shunting and jarring when travelling over uneven terrain. This means less wear and tear on the chassis and will increase the servicable life of both the bin and your tractor.



INDEPENDENT CLEAN-OUT DOORS

Easily ensure the cross-auger is fully cleared of remaining grain or contaminates.



HARVEST IN STYLE



AUGER FEATURES

ULTRA FAST UNLOAD

Our huge 20" auger maximises harvest efficiency with an unload speed of up to 12 tonnes per minute. That is **1 tonne every 5 seconds** or a full 35-tonne load in the truck in under 3 minutes! Choose from standard 1,000 RPM PTO high-speed drive or optional hydraulic drive.

STRONG CONSTRUCTION

508 mm diameter dual-fold design with 10 mm thick flights welded around 150 mm centre pipe. The auger protection guard protects the auger from damage and collisions.

CONTROL THE FLOW

The hydraulic spout allows you to adjust the flow of grain with complete accuracy and control. The hydraulic kicker allows easy adjustment of the discharge angle and height. A shut-off door at the base of the vertical auger allows flow-rate control for fast metering crops and easier cleaning.

ULTRA-BRIGHT AUGER LIGHTS

Twin 48W 16 LED 3,000 lumens lamps mounted to the auger spout.



BUILT TO LAST

OVER-ENGINEERED TO BE TOUGH, RELIABLE, AND LAST A LIFETIME

- The vertical auger flights are constructed with 10 mm steel, instead of the industry standard 6 mm steel. This helps avoid them becoming unbalanced due to bowing.
- The undercarriage on the bogey-axle models is rated to over double its carrying capacity at 80 tonne.
- Whilst the curved side plates are made from 3 mm steel plate, the front, back and underside of the superstructure is made from heavier 6.4 mm steel plate, offering strength and durability exactly where you need it.
- The heavy-duty chassis is constructed with strong 10 mm and 16 mm plate for superior strength and performance.
- The bin is finished with 2-pack paint for resistance to weathering, scratching and chipping. It will look as good 10 years from now as it did the day it arrived.



STANDARD FEATURES

OF EVERY DAVIMAC CHASER BIN



CTF-STANDARD WIDTHS

User-adjustable wheel centres from 2.56 m to 3 m.

HEAVY-DUTY ROLL TARP

Protect your load from the elements with the 900 GSM PVC reinforced polyester roll tarp. UV stabilised and FR treated for weather resistance and heat-welded bonds for maximised durability.

TWO LARGE WINDOWS

See into the bin through 6 mm perspex to monitor your load.

AUGER WINDOW

Confirm auger function through the base of the auger.

SAFETY CHAIN AND TOOLBOX

Tool and documentation storage.

AUGER PROTECTION GUARD

Protect the auger from damage and collisions.

ROAD KIT

Safe road transport and operation with weather resistant 'oversized' signage, flags, beacons and LED tail lights.

MACHINE OPTIONS

CUSTOMISE YOUR MACHINE TO SUIT YOUR FARM

A AUGER HOPPER / FEED-OUT CHUTE

Make use of your bin in the off-season with an adjustable height auger hopper chute to easily distribute stock feed around your farm.

B LONG-REACH AUGER

Add 600mm to the length of the auger for a total length of over 6m, while still keeping a single fold for fewer points of weakness.

C FIRE EXTINGUISHER / FIRE-FIREFIGHTING UNIT

Mount a 9L air/water mix fire extinguisher to the front chassis, or select a forward-mounted fire fighting unit. The 400L tank comes with a custom-designed mounting bracket, pump and 36m hose to dispense water up to 120L/min.

ALSO AVAILABLE

REAR TOWING

Tow additional implements behind your chaser bin with an optional towbar. Choose a light-duty towbar with 3.5T capacity or a heavy-duty towbar with 25T capacity.

D RIGHT-HAND DISCHARGE AUGER CHUTE

Customise your chaser bin to suit your harvest workflow with right-hand discharge.

E WEIGH SCALES

Easily monitor from within the cab when you need to unload, and track yields paddock by paddock with Bluetooth-compatible scales.

F CUSTOM COLOUR [GREEN]

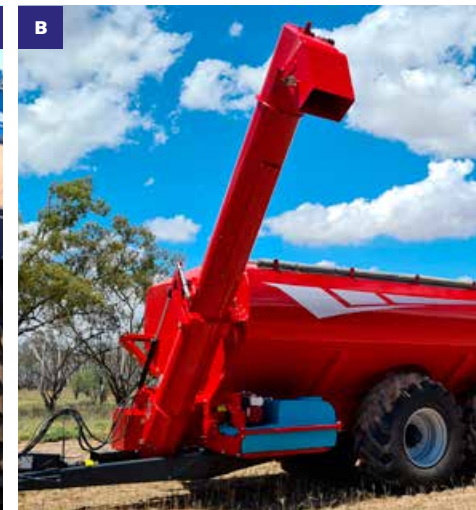
Optional green finish complete with modified decals and undercarriage paint.

G CUSTOM COLOUR [RED]

Optional red finish complete with modified decals and undercarriage paint.

HYDRAULIC DRIVE

Change your PTO drive to a hydraulic drive with 500RPM to maximise bin compatibility with older model tractors or tractors without PTO.



DAVIMAC



Q davimac.com.au

Up-to-date owners and parts manuals
Comprehensive spare parts store
Delivery to your address or local dealer
Search by part name or SKU
Machine knowledgebase

SPARE PARTS

At Davimac, we know how important it is that your machine is as well-supported ten years from now as it is today. That's why our online store is available day and night to make sure your Davimac machine is always ready to go.

We offer spare parts and accessories for all Davimac machines* including chaser bins, legacy track systems, Davimac seed drill and pasture seeder implements.

Simply go to davimac.com.au to browse our spare parts store.

With owners and parts manuals, clear photos, part numbers, names and descriptions, you can have confidence that you are ordering the correct part for your machine. Most orders are packed and shipped within one working day.



*Not all parts are kept as regular stock. Some legacy items and accessories may need to be made to order, ordered directly from the manufacturer, or may have been discontinued. Please contact Davimac if the parts you are looking for are unavailable online.



MODEL		SINGLE-AXLE		DUAL-AXLE	
		25T	30T	30T	35T
CONSTRUCTION					
Capacity (volume)		31.93 m³	38.45 m³	38.08 m³	44.39 m³
Capacity (water level load) (0.8 tonne per cubic metre)		25.54 tonne	30.76 tonne	30.46 tonne	35.51 tonne
Empty weight		6.12 tonne	7.8 tonne	12.65 tonne	13.3 tonne
Overall length		8,800 mm	10,000 mm	10,000 mm	11,270 mm
Bin length		6,400 mm	7,420 mm	7,420 mm	8,570 mm
Transport width		3,480 mm (for 2.6 m centers)			
Bin side / filling height		3,310 mm			
Underside plate width		6.4 mm			
Front and back plate width		6.4 mm			
Side plate width		3 mm			
Bin side angle		55°			
UNDERCARRIAGE					
Wheels	Standard	800/65 R32	900/60 R32	30.5x32 18 ply	30.5x32 18 ply
	Option	900/60 R32	-	900/60 R32	900/60 R32
Wheel centers		2.56 m, adjustable to 3 m			
Total axle load capacity		40 tonne		80 tonne	
Wheel studs per wheel		12			

MODEL		SINGLE-AXLE		DUAL-AXLE	
		25T	30T	30T	35T
AUGER					
Vertical auger diameter		508 mm			
Vertical auger construction		10 mm thick flights welded around 150 mm circular pipe			
Vertical auger length		5562 mm			
Vertical auger discharge reach		2,380 mm (2.6 m centers), 2,180 mm (3 m centers)			
Horizontal auger diameter		405 mm			
Horizontal auger construction		6 mm flights			
Vertical-horizontal auger coupling drive		Direct drive			
Adjustable auger discharge height range	800/65 R32	4406 to 4662 mm	-	-	-
	900/60 R32	4456 to 4712 mm	4447 to 4704 mm	4447 to 4704 mm	4447 to 4704 mm
	30.5x32 18 ply	-	-	4430 to 4686 mm	4430 to 4686 mm
Unload speed		12 tonnes / minute			
No. rams to fold auger		2			
PTO Drive speed		1000 RPM			

MODEL		SINGLE-AXLE		DUAL-AXLE	
		25T	30T	30T	35T
STANDARD INCLUSIONS					
Roll tarp		900 GSM Panama-woven 1100 dtex PVC coated polyester with high tenacity yarn. UV stabilised and FR treated with heat-welding for waterproofing and reinforced load webbing			
Road kit		Pair of 12v halogen orange pole-mounted hazard lights			
Oversize signage		1200 x 400 mm aluminium “Oversize” sign			
Tail lights		Pair of water-resistant IP67-rated LED tail lights			
Auger lights		2x 48W 16LED 3000 lumens (6000 lumens total)			
Bin windows		Two in the front of the bin, 6 mm perspex			
Auger windows		One in the base of the auger			
Other		3 m wheel centers, cushion-hitch A-frame, safety chain, auger protection guard, independent clean out doors, tool box			



MODEL		SINGLE-AXLE		DUAL-AXLE	
		25T	30T	30T	35T
MACHINE OPTIONS					
Rear tow lug - heavy duty		25 tonne capacity			
Rear tow lug - light duty		3.5 tonne capacity			
Firefighting unit		Honda GX160 pump, 400 litre Fire Marshal Plus SFO400BLZ fire unit, hose reel, mounting bracket			
Fire extinguisher		Fire extinguisher air/water 9 litre			
Right-hand discharge auger chute		Yes			
Long-reach auger		Adds 500 mm to height of vertical auger			
Long-reach auger discharge height		Extends auger discharge height to 5,095 mm			
Auger hopper/feed-out chute		1.47 m or 2.05 m discharge height			
Weigh scales		Bluetooth compatible, weigh accuracy 10 kg			
Hydraulic drive		500 RPM			
Custom colour		Green or Red			

DAVIMAC



YOUR AUTHORISED DAVIMAC DEALER:

DAVIMAC Head Office
55 Wellington Street
Molong NSW 2866

www.davimac.com.au
02 6366 8584
contact@davimac.com.au

