

HP-30 Syringe Pump

Simple

Unique touch-screen design
Intuitive operation
Wi-Fi connectivity

Speed

Fast set up
Flexible loading syringe
Stackable pumps and docking stations
Compact design for efficient transportation

Smart

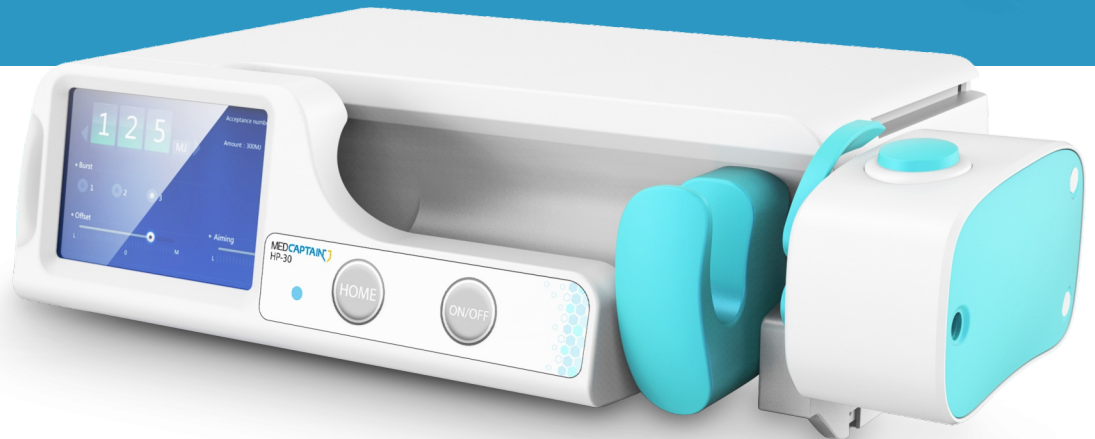
Relay infusion between any mode/pump
12 Infusion mode including PCA and TCI
Non-stop therapy with multiple infusion mode
User-defined screen brightness
Selectable background colors

Safe

High accuracy
Visual, audible and textual alarm
Occlusion levels adjustable
Information standard

Sophisticated

Connectivity even in transport
Connectable with any HIS/CIS
Minimum 2ml syringe size
Advanced monitoring platform



Specifications

Dimension:	258 x 75 x 152 mm (WxHxD)
Weight:	1.85kg including battery
Screen:	3.0 inch LCD touch screen, brightness 10 level adjustable, 7 colors selectable
Classification:	Type CF, Class I, IP23
Compatible syringe set	All syringes of 2ml,3ml ,5ml, 10ml, 20/30ml, 50/60ml conform to the standard

Basic parameter

Infusion mode:	Rate, Time, Wight, Sequency, Trapezia, Loading dose, Relay mode, Micro, Recycle relay mode, TCI, TIVA, PCA	
Infusion rate range:	0.10-60.00(ml/h)(2ml syringe size) 0.10-150.0(ml/h)(5ml syringe size) 0.10-600.0(ml/h)(20ml syringe size) 0.10-2000.0(ml/h)(50/60ml syringe size)	0.10-90.00(ml/h)(3ml syringe size) 0.10-300.0(ml/h)(10ml syringe size) 0.10-900.0(ml/h)(30ml syringe size)
Increment:	0.1-99.99ml/h (increments 0.01ml/h) 1000-2000ml/h (increments 1ml/h)	100-999.9ml/h (increments 0.1ml/h)
VTBI range:	0.1-9999ml	
Preset time:	00:00:01-99:59:59 (increments 1s)	
Accumulated volume:	0.0-99999.99ml	
Accuracy:	±2%	
KVO rate:	0.1-5ml/h adjustable, step by 0.01ml/h,	

Bolus rate:	0.10-60.00(ml/h)(2ml syringe size) 0.10-150.0(ml/h)(5ml syringe size) 0.10-600.0(ml/h)(20ml syringe size) 0.10-2000.0(ml/h)(50/60ml syringe size)	0.10-90.00(ml/h)(3ml syringe size) 0.10-300.0(ml/h)(10ml syringe size) 0.10-900.0(ml/h)(30ml syringe size)
3 bolus ways selectable:	Automatic/Manual/Rapid quantitative Bolus	
Purge rate:	60.00(ml/h)(2ml syringe size) 150.0(ml/h)(5ml syringe size) 600.0(ml/h)(20ml syringe size) 2000.0(ml/h)(50/60ml syringe size)	90.00(ml/h)(3ml syringe size) 300.0(ml/h)(10ml syringe size) 900.0(ml/h)(30ml syringe size)
Occlusion level:	11 levels selectable, 150mmHg- 975mmHg	

Special Function

Recent therapy:	20 recent therapies are recorded and can be used for rapid infusion
Rate change during infusion:	Infusion rate can be changed anytime during infusion, not necessary to stop infusion before change
Relay function:	Continuous infusion among any pump within docking station at any mode to guarantee non-stop therapies for sensitive drugs
Auto screen lock:	"OFF" and "ON". 15s, 30s, 1min, 2min, 5min, 10min, 30min selectable when "ON". "OFF" by default
Drug library:	More than 1500 drugs available with soft and hard limit editable, up to 5000 drugs can be built in
Repeat alarming:	Alarm sounds again in 2 minutes, if there is still alarm after alarm is mute
Event recording:	Maximum 2000 events can be stored and play back
Sound volume:	5 levels selectable
Power supply switching:	When AC/DC power supply is cut off, the infusion automatically switch to internal battery supply

Power supply

AC power:	100-240, 50/60 Hz, power consumption 45VA
External DC power:	DC 12 V, 1A
Internal battery:	Lithium battery 11.34V 2900mAh
Battery duration:	10 hours @5ml/h with a new battery
Charging time:	6 hours when power off

Alarm

Visual and acoustic alarm:	Near Finished, Finished, Syringe Empty, Near empty, Low Battery, Battery Empty, No Battery, No Power Supply, Unknown Syringe, Syringe Install Error, Standby Time Expired, Relay Index Duplicate, Syringe Start Fail, Reminder Alarm, System Malfunction, Occlusion Alarm
-----------------------------------	---

Connectivity

WiFi/Wired:	To connect central infusion monitoring system, nurse pager, voice communication and infusion pump information network
Barcode scanning:	Patient information input by barcode scanning
Data interface:	Supported, USB, RJ45

Mounting

Inside docking station:	Supported
Between pumps:	Stackable between any HP series syringe I volumetric pump produced by Medcaptain
Handle:	Available
Pole clamp direction:	Can be mounted at different directions, 90°/ 180°/270°/360°

Safety requirement

Operating conditions:	Temperature: 5°C to 40°C Humidity:15% to 95% RH Pressure altitude: 57.0kPa-106.0kPa
Storage conditions:	Temperature: -20°C to +55°C Humidity:10% to 93% RH Pressure altitude: 22.0kPa-107.4kPa



MEDCAPTAIN MEDICAL TECHNOLOGY CO., LTD

Add: 12th Floor, Baiwang Research Building, No.5158 Shahe West Road, Xili, Nanshan, Shenzhen, P.R. China

Tel: +86 755 26953369

Fax: +86 755 26001651

E-mail: info@medcaptain.com

Website: www.medcaptain.com



DISTRIBUTOR:

MEDCAPTAIN is a trade mark of Medcaptain Medical Technology Co., Ltd. Specifications are subject to change without prior notice. ©2015-2017 Medcaptain Medical Technology Co., Ltd. All rights reserved.