



EE MODELS

Merlo's factories in San Defendente di Cervasca (Cuneo) cover an area of 300,000 m² (with 220,000 m² inside facilities)



1. Merlo SpA main offices
2. Final assembly lines
3. Lines for assembling components and cabs
4. Moulding of technopolymers
5. Automated storing and shipping centre
6. Machines plus attachments shipping centre
7. Final quality control
8. Technological centre
9. Steel and structural assembly lines centre
10. 3M attachments
11. CFRM (Training & Research Centre)

The Merlo Group

N° 1 for technology and safety

Merlo Group is one of the world's leading manufacturers of telehandlers for the following sectors: Agriculture, Construction, Industry and Recycling. The group is also involved in the production of tool-carrying tractors for municipal and forestry use, with its TreEmme brand.

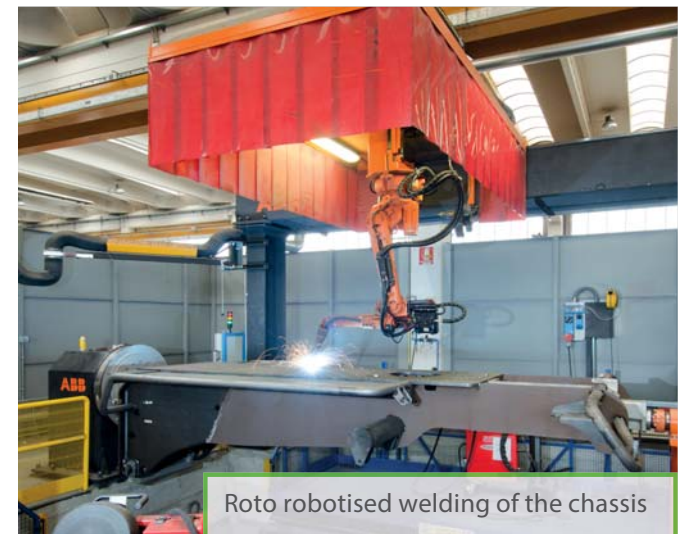
For us, nothing is insignificant and nothing is left to chance. The quality of our machinery is the result of carefully selected materials, with a constant focus upon research and technological innovation, and, above all, the passion that distinguishes our work and that of all our collaborators. Boasting over 1,300 employees and a turnover over 400 million Euros, Merlo's high-tech products are used anywhere in the world.

Merlo maintains an international outlook and a dedication to family values, and is proud to offer an environment based on mutual respect and the possibility of individual growth.

- 1.300 employees
- Surface area of 300,000 m² of which 220,000 m² are indoors
- 90% exports
- 800 dealers all over the world
- 8% of turnover invested in R & D
- 60 robots



Automated boom bending workstation



Robo robotised welding of the chassis

TECHNOLOGIES

New cab

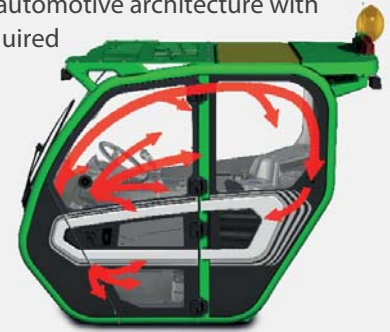
Is the widest on the market at 1010 mm

Visibility has always been one of the strengths of Merlo's vehicles.

Designers have consolidated this feature by adopting a curved wind-shield named «Merlo Sky-View» which ensures unrestricted visibility of the load even when the telescopic boom is fully extended. The ergonomics of the driving seat maximised by the tilting steering wheel and by the digital instrument panel.

New air conditioning system

Designed around a typical automotive architecture with manual selection of the required temperature. Incoming air passes through an anti-pollen filter and is distributed by eight vents. Defrost ventilation. The effectiveness of the system helps maintain a pleasant internal temperature even with very high external/internal differences.



TURBOFARMER STANDARD (ECO) CABIN

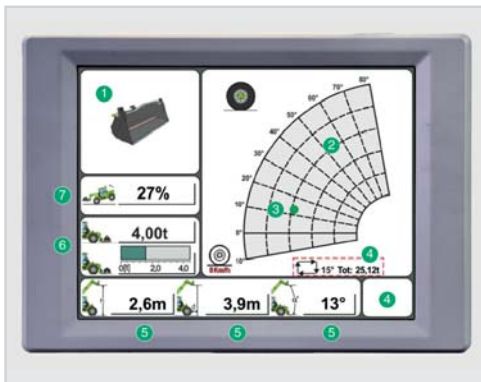


PANORAMIC STANDARD (ECO) CABIN



ROTO STANDARD (PREMIUM) CABIN





MERLO CDC DISPLAY (OPTIONAL)

1. With attachment in use
2. Work area
3. Load positioning (in work area)
4. Load detection menu
5. Operating parameters
6. Work information
7. Stability index

Merlo CDC - Dynamic Load Control:

The system that we have developed is fully integrated with the MDCD system and uses some of the latter's operator information systems such as the new 8.5" and 10.1" graphic colour display, the progressive bar graph indicating vehicle stability and a buzzer. With these tools the operator will be informed in real time of the state of stability (longitudinal) of the telehandler, so as to be able to operate in complete safety up to the vehicle's capacity limit. Available as option or as standard configuration according to the models.

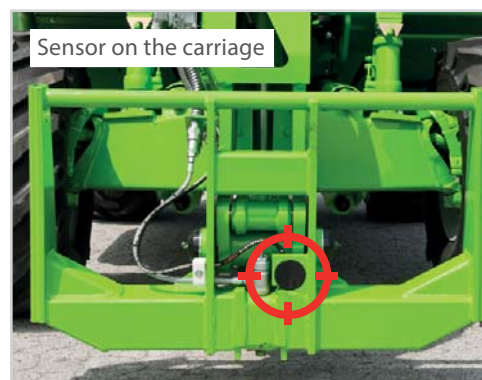


Safety/Comfort

Level 2 type-approved FOPS and ROPS cab to provide maximum "passive" safety. Maximum visibility in all directions thanks to the low fulcrum of the telescopic boom and the longitudinal engine: excellent front, side, rear and upwards visibility so that the operator can follow the boom along its entire travel.



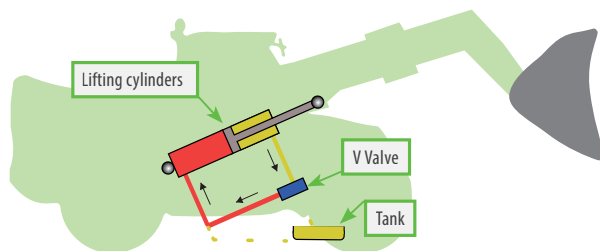
Sensor on the attachment



Sensor on the carriage

Automatic recognition of the attachment

The Merlo CDC permits the mounted attachment to be automatically recognised and its behaviour to be calibrated as a consequence on the basis of the specific load charts.



Regenerating system

In order to increase productivity, the P120.10 EE model uses the regenerative system as standard, which has been designed to increase the angular speed of the boom when handling loads. The system makes it possible to automatically increase the speed by 36% compared to similar systems not equipped with the regenerating function

Levelling

System for correcting tilt, built into the chassis, allowing the operator to correct ground slopes and work in complete safety. The combined action of the lateral inclination and the stabilisers allows the operator to further correct ground slopes on the Panoramic with stabilisers.



WITHOUT STABILISERS



WITH STABILISERS



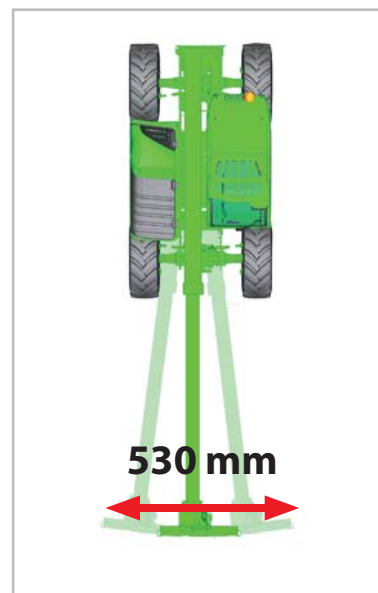
BSS hydro-pneumatic suspension of the boom (optional)

Can be activated by the operator and is automatically disengaged below 3 km/h to ensure maximum load positioning precision

Side shift of the boom

(Panoramic with stabilisers and high capacity)

The boom can be moved sideways by the operator so that the load can be positioned with maximum precision, comfort and time-saving.



ATTACHMENTS

From the idea to development of multi-applicability More efficiency and productivity thanks to Merlo



Merlo adopts simple and effective guidelines in the evolution of the product.

From conception to development, everything is studied, designed and created in the Group's plants.

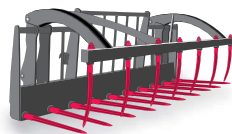
This simple "rule" also applies to attachments.

Backed by years of experience, Merlo's technicians have developed a wide range of attachments, divided by type and load capacity. The multi-function Merlo systems, immediately operative in a multitude of different applications, are among the most advanced technology to offer efficiency, comfort and above all, safety in daily work.

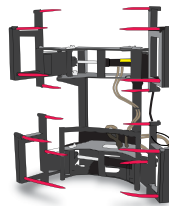
BALE FORKS



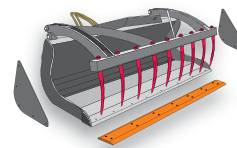
MANURE FORK WITH CRAB



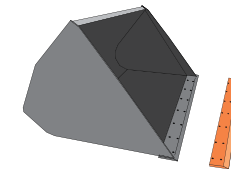
GRIPPERS FOR BALES



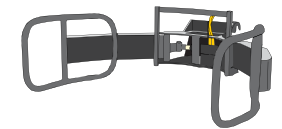
MULTI-PURPOSE LOADER WITH CLAW



LOADERS



GRIPPERS FOR WRAPPED BALES



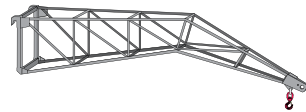
HOOKS/LIFTING BOOMS



CARRIAGE-MOUNTED HOOK



FLY JIB



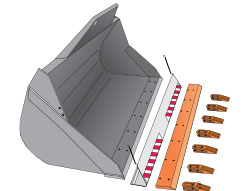
PLATFORMS



WINCH



DIGGING BUCKET



Merlo presents the range of EE products for global markets
Italian technology from Merlo has been at the forefront of the market
for 50 years and is always future-oriented



	MODEL	Maximum capacity (kg)	Maximum lifting height (m)	Engine (kW/HP)	Maximum speed (km/h)	Hydraulic system	Width (mm)	Height (mm)	Length (mm)	Stabilisers	Levelling	Boom side-shift
COMPACT	P27.6EE 4 PLUS	2700	5,9	55,4/75	40	Gears	1860	1960	3910	-	-	-
	P27.6EE 4 TOP	2700	5,9	55,4/75	40	Gears	1860	1960	3910	-	-	-
	TF33.7-100GEE	3300	6,6	74/100	40	Gears	2100	2120*	4310	-	-	-
	TF30.9-100GEE	3000	8,6	74/100	40	Gears	2100	2120*	4330	-	-	-
	TF33.7-100EE	3300	6,6	74/100	40	LS + FS	2100	2120*	4310	-	-	-
	TF30.9-100EE	3000	8,6	74/100	40	LS + FS	2100	2120*	4330	-	-	-
TURBOFARMER	TF35.7-100GEE	3500	6,6	74/100	40	Gears	2250	2240	4310	-	-	-
	TF33.9-100GEE	3300	8,6	74/100	40	Gears	2250	2240	4330	-	-	-
	TF35.7-100EE	3500	6,6	74/100	40	LS + FS	2250	2240	4310	-	-	-
	TF33.9-100EE	3300	8,6	74/100	40	LS + FS	2250	2240	4330	-	-	-
	TF42.7-100EE	4200	7,1	74/100	40	LS	2250	2465	4487	-	-	-
	TF38.10-100EE	3800	9,5	74/100	40	LS	2250	2465	4487	-	-	-
PANORAMIC WITH STABILIZERS	P30.10EE	3000	9,6	74/100	40	LS+FS	2100	2120*	4600	Yes	-	-
	P40.13EE	4000	12,5	74/100	40	LS	2240	2425	5410	Yes	Yes	Yes
	P40.17EE	4000	16,6	74/100	40	LS	2420	2500	5970	Yes	Yes	Yes
	P50.18EE	5000	17,5	74/100	40	LS	2460	2535	6190	Yes	Yes	Yes
MULTIFARMER	MF40.7CSEE	4000	6,8	125/170	40	LS+FS	2350	2510	5310	-	Yes	-
	MF40.9CSEE	4000	8,8	125/170	40	LS+FS	2350	2510	5490	-	Yes	-
HIGH CAPACITY	P72.10EE	7200	9,6	74/100	40	LS	2330	2455	5484	-	Yes	Yes
	P120.10HMEE	12000	9,8	125/170	40	LS+FS	2470	2850	5720	-	Yes	Yes

*also available in L version : 2020 mm. LS: Load Sensing. FS: Flow Sharing.

	MODEL	Maximum capacity (kg)	Maximum lifting height (m)	Engine (kW/HP)	Maximum speed (km/h)	Hydraulic system	Width (mm)	Height (mm)	Length (mm)	Stabilisers	Turret rotation
ROTO	ROTO40.16EE	4000	15,8	80/107	25	LS + FS	2240	3010	6280	On/Off	415°
	ROTO40.18EE	4000	17,7	80/107	25	LS + FS	2240	3010	6030	On/Off	415°

	MODEL	Total unladen weight (kg)	Concrete yield capacity (Slump 8 cm max)	Drum volume (l)	Loading bucket volume (l)	Water tank capacity (l)	Drum rotation speed (rpm)	Speed (km/h) 1 st gear 2 nd gear	Maximum unloading height • without chute • with chute
DBM	DBM2500EE	6100	2500	3500	700	950	0-26	11 40	1930 1715
	DBM3500EE	7200	3500	5000	700	950	0-18	11 40	2285 2100

- ✓ The only one in its category with a maximum speed of 40 km/h
- ✓ Continuous gearbox from 0 to 40 km/h without interrupting torque
- ✓ Largest cab in the category (1010 mm)



SUPER COMPACT

P27.6EE: a practical, versatile, easy to handle and compact telehandler

The most comfortable and high performance model in its category

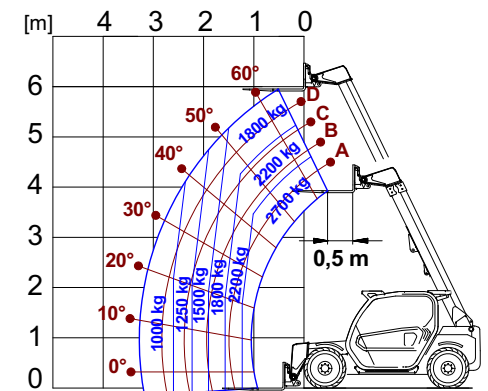


Merlo has developed a high-performance compact telehandler. Compactness, lifting capacity, traction, comfort and high-level safety are the special features of the Merlo P27.6.EE. With a boom which extends to 6 metres in height for a lifted load of 2.7 tonnes, the new P27.6EE has the same modular cab as its big brothers, offering astounding space and visibility - unique in its category. With a top speed of 40 km/h, the P27.6EE handler is unrivalled in its class, and is the undisputed leader on the market. P27.6EE is available in two versions: P27.6EE 4 TOP and P27.6EE 4 PLUS.

TECHNICAL INFORMATION

	P27.6EE 4 PLUS	P27.6EE 4 TOP
Total unladen mass, with forks (kg)	4850	4850
Maximum capacity (kg)	2700	2700
Lift height (m)	5,9	5,9
Boom side shift (mm)	-	-
Frame levelling (%)	-	-
Turbo engine (brand/cylinders)	Kohler/4	Kohler/4
Stage IV engine power (kW/HP)	55,4/75	55,4/75
Hydrostatic transmission	STD	STD
Maximum speed (km/h)	40	40
Hydraulic pump	Gear	Gear
Flow/pressure (l/min - bar)	95 - 210	95 - 210
Stabilizers	-	-
Width (mm)	1860	1860
Height (mm)	1960	1960
Length (mm)	3910	3910

P27.6EE WITH FORKS



EN 1459/B



- ✓ Largest cab in the category (1010 mm).
- ✓ The only one in its category with a maximum speed of 40 km/h as standard
- ✓ Reverse shuttle on joystick and on steering wheel (Dual Control)
- ✓ Excellent manoeuvrability
- ✓ Fan Drive standard



COMPACT MODELS

A range of compact telehandlers, maximum performance and small overall dimensions

Tier3 4-cylinder engines, 100 HP for maximum performance and versatility

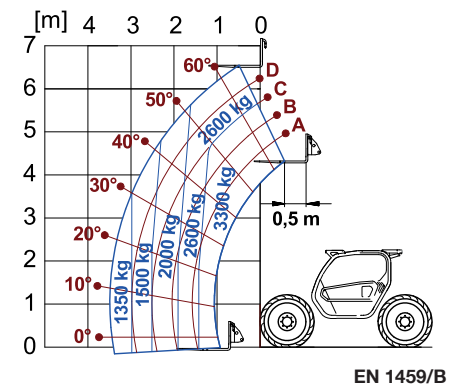


The TF30.9EE and TF33.7EE models of the Compact range have also been designed for agricultural, livestock, poultry and nursery businesses, as well as for building and construction work. The TF30.9EE and TF33.7EE are equipped with Tier3 74kW/100 HP engines. They can carry out company handling jobs, up to 3.3 tonnes, to lift loads of up to 9 metres in height and can be offered in version L (Low Profile) to reduce the height to 2,02 meters.

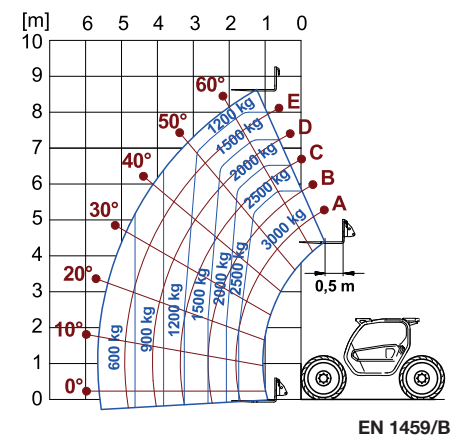


TECHNICAL INFORMATION	TF33.7-100GEE	TF30.9-100GEE	TF33.7-100EE	TF30.9-100EE
Total unladen mass, with forks (kg)	6500	6700	6500	6700
Maximum capacity (kg)	3300	3000	3300	3000
Lift height (m)	6,6	8,6	6,6	8,6
Boom side shift (mm)	-	-	-	-
Frame levelling (%)	-	-	-	-
Turbo engine (brand/cylinders)	Kubota/4	Kubota/4	Kubota/4	Kubota/4
Engine Power (kW/HP)	74/100	74/100	74/100	74/100
Hydrostatic transmission	2 speeds	2 speeds	2 speeds	2 speeds
Maximum speed (km/h)	40	40	40	40
Hydraulic pump	Gear	Gear	LS+FS	LS+FS
Flow/pressure (l/min - bar)	105-210	105-210	140-210	140-210
Stabilizers	-	-	-	-
Width (mm)	2100	2100	2100	2100
Height (mm)	2120 (2020 L)	2120 (2020 L)	2120 (2020 L)	2120 (2020 L)
Length (mm)	4310	4330	4310	4330

TF 33.7EE WITH FORKS



TF 30.9EE WITH FORKS





- ✓ Fan Drive standard
- ✓ The widest cab in the category (1010 mm)
- ✓ Level II ROPS and FOPS cab compliant
- ✓ "Dual Control" reverse shuttle on joystick and steering wheel
- ✓ Maximum speed 40 km/h as standard
- ✓ Two-speed hydrostatic transmission
- ✓ Load-Sensing or Gear pump

MEDIUM DUTY

Modular telehandlers Turbofarmer Medium Duty

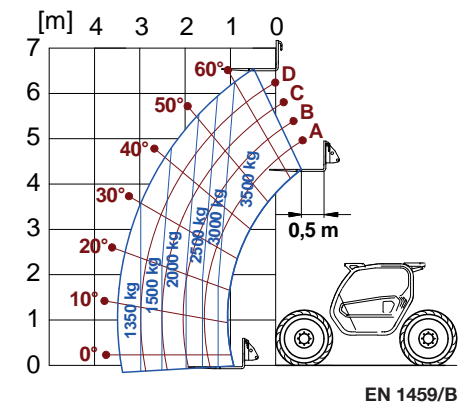
Cutting-edge technology and performance



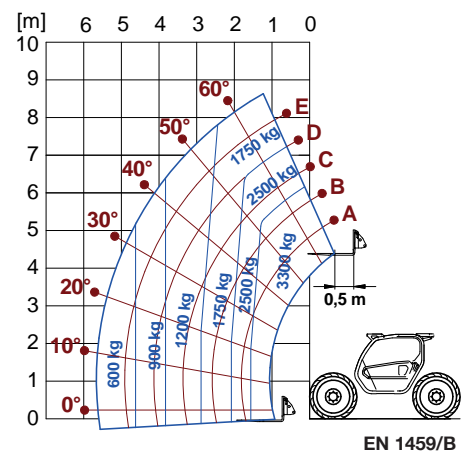
The Panoramic family is now expanded thanks to a new range of telehandlers in one of the most important sectors of the building and construction sector - 3.3 and 3.5 tonnes for heights of 7 and 9 metres - named Medium Duty. The range has two basic models - TF35.7EE and TF33.9EE - available in 4 different versions, with 100HP engines. These models provide compact dimensions among the best in their category, thereby ensuring maximum safety, comfort and productivity.

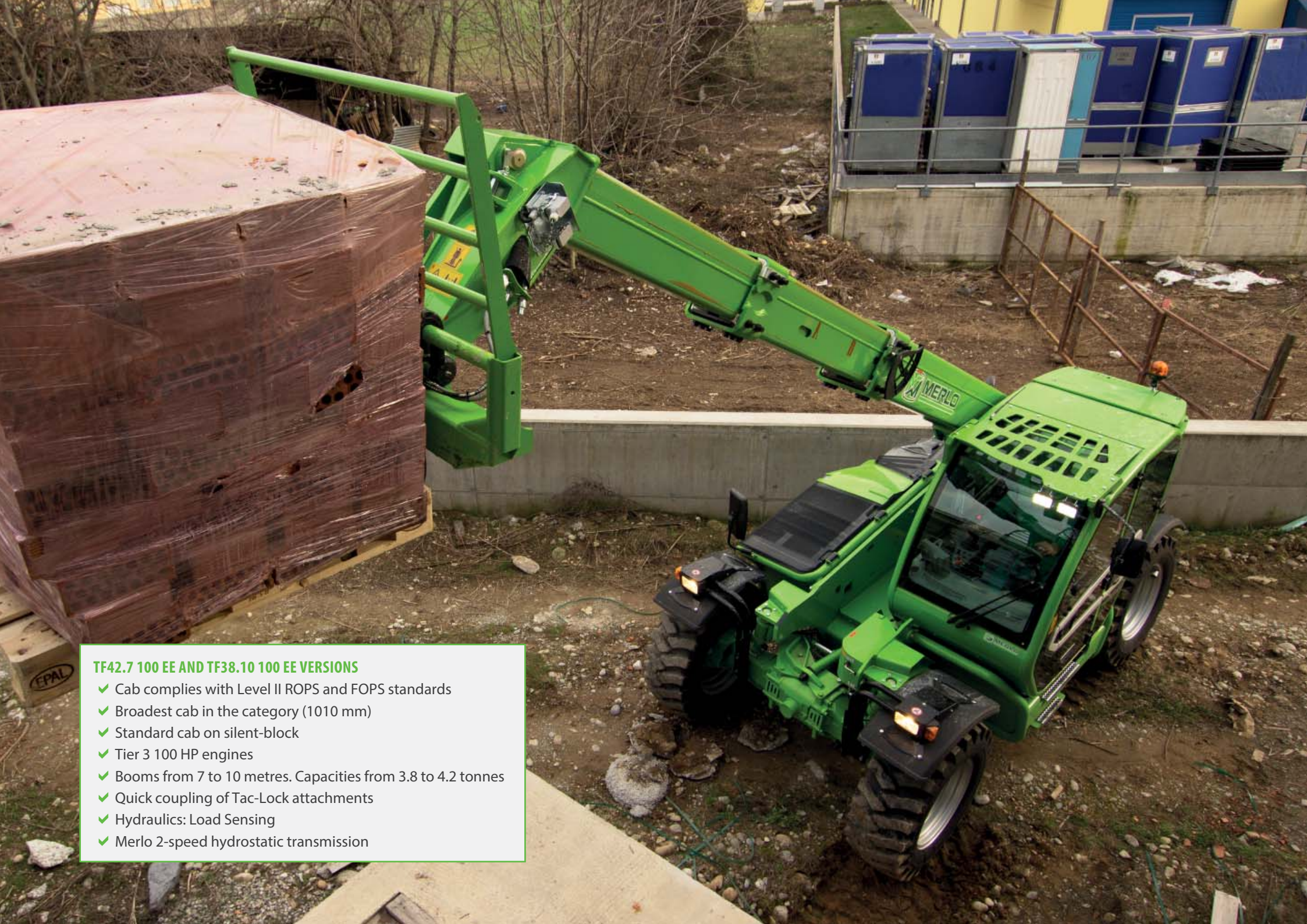
TECHNICAL INFORMATION	TF35.7-100GEE	TF33.9-100GEE	TF35.7-100EE	TF33.9-100EE
Total unladen mass, with forks (kg)	6650	6900	6650	6900
Maximum capacity (kg)	3500	3300	3500	3300
Lift height (m)	6,6	8,6	6,6	8,6
Boom side shift (mm)	-	-	-	-
Frame levelling (%)	-	-	-	-
Turbo engine (brand/cylinders)	Kubota/4	Kubota/4	Kubota/4	Kubota/4
Engine Power (kW/HP)	74/100	74/100	74/100	74/100
Hydrostatic transmission	2 speeds	2 speeds	2 speeds	2 speeds
Maximum speed (km/h)	40	40	40	40
Hydraulic pump	Gear	Gear	LS+FS	LS+FS
Flow/pressure (l/min - bar)	105-210	105-210	140-210	140-210
Stabilizers	-	-	-	-
Width (mm)	2250	2250	2250	2250
Height (mm)	2240	2240	2240	2240
Length (mm)	4310	4330	4310	4330

TF 35.7EE WITH FORKS



TF 33.9EE WITH FORKS





TF42.7 100 EE AND TF38.10 100 EE VERSIONS

- ✓ Cab complies with Level II ROPS and FOPS standards
- ✓ Broadest cab in the category (1010 mm)
- ✓ Standard cab on silent-block
- ✓ Tier 3 100 HP engines
- ✓ Booms from 7 to 10 metres. Capacities from 3.8 to 4.2 tonnes
- ✓ Quick coupling of Tac-Lock attachments
- ✓ Hydraulics: Load Sensing
- ✓ Merlo 2-speed hydrostatic transmission

TURBOFARMER

The new modular telehandlers from 7 to 10 metres

Merlo technology at the service of construction companies

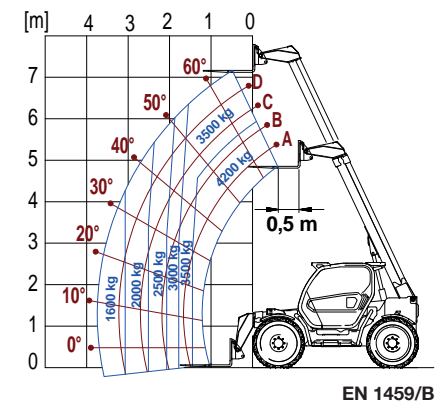


The Turbofarmer II range is the result of experience gained in the field of Merlo telehandlers and is based on a modular concept that facilitates order management, the production process and the quality level, consequently reducing delivery times. The Turbofarmer II models represent the state of the art in the world of agricultural and construction telescopic handlers in terms of both plan and design. It is composed of two models, TF42.7EE and TF38.10EE, capable of lifting up to 4.2 tonnes with maximum lifting heights of 10 meters, ensuring excellent results in terms of comfort, productivity and safety.

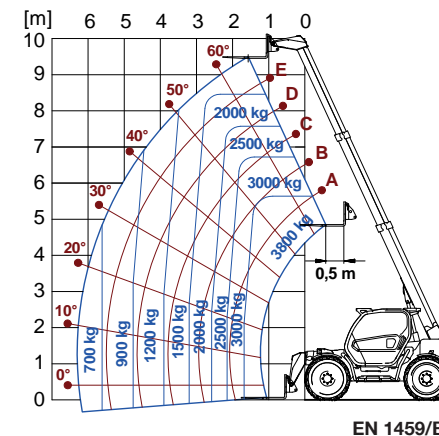
TECHNICAL INFORMATION

	TF42.7-100EE	TF38.10-100EE
Total unladen mass, with forks (kg)	7450	7900
Maximum capacity (kg)	4200	3800
Lift height (m)	7,1	9,5
Boom side shift (mm)	-	-
Frame levelling (%)	-	-
Turbo engine (brand/cylinders)	Kubota/4	Kubota/4
Engine Power (kW/HP)	74/100	74/100
Hydrostatic transmission	2 speeds	2 speeds
Maximum speed (km/h)	40	40
Hydraulic pump	LS	LS
Flow/pressure (l/min - bar)	140-210	140-210
Stabilizers	-	-
Width (mm)	2250	2250
Height (mm)	2530	2530
Length (mm)	4560	4560

TF42.7-100EE WITH FORKS



TF38.10-100EE WITH FORKS





- ✓ Suspended cab, the largest in the category , complete with multi-function armrests
- ✓ Tilting system as standard
- ✓ BSS Boom Suspension System (Optional)
- ✓ M CVTronic transmission from 0 to 40 km/h without torque interruption
- ✓ Hydraulic lift electronically managed, sensors on the lower links. 7 tonnes lifting capacity
- ✓ PTO electronically controlled mechanical meshing
- ✓ Hydraulic distributors managed by electronic joysticks and rear hydraulic quick couplers
- ✓ Rear differential lock

MULTIFARMER

The range of telehandlers with electronic lifting, 3-point linkage and mechanical PTO

The Merlo telescopic tractor



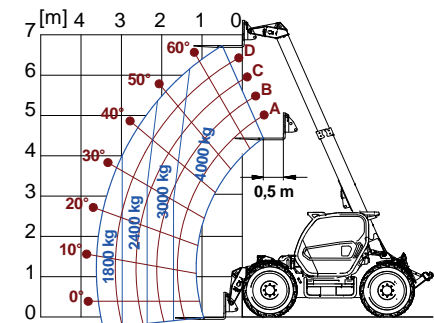
The Multifarmer family and its MF40.7CSEE & MF40.9CSEE models are Heavy Duty telehandlers with booms capable of handling 4 tonnes loads at 7 or 9 metres height. They are equipped with the M CDC anti-tip over system and 170 HP EPD-controlled engines that reduce fuel consumption by 18%. The Multifarmers can be used for handling materials as well as for conventional tractor applications. In fact, MF 3-point linkage, ELC, and PTO are designed to suit any implement used by conventional tractors, for soil preparation and for haulage operations.



TECHNICAL INFORMATION

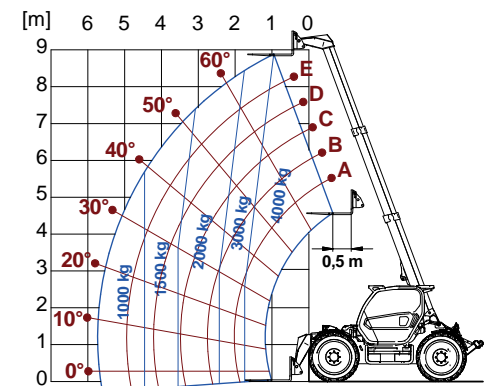
	MF40.7CSEE	MF40.9CSEE
Total unladen mass, with forks (kg)	8700	9150
Maximum capacity (kg)	4000	4000
Lift height (m)	6,8	8,8
Frame levelling (%)	+/- 8	+/- 8
Turbo engine (brand/cylinders)	FPT NEF45/4	FPT NEF45/4
Engine Power (kW/HP)	125/170	125/170
Hydrostatic transmission	EPD + CVT	EPD + CVT
Maximum speed (km/h)	40	40
Hydraulic pump	LS+FS	LS+FS
Flow/pressure (l/min - bar)	150-210	150-210
Mechanical PTO (540/1000)	STD	STD
3-point linkage (kg)	7000	7000
Width (mm)	2350	2350
Height (mm)	2510	2510
Length (mm)	5310	5490

MF40.7CSEE WITH FORKS



EN 1459/B

MF40.9CSEE WITH FORKS



EN 1459/B

- ✓ Cab complies with Level II ROPS and FOPS standards
- ✓ M CDC Light Merlo with light indicator
- ✓ Tilt correction on the chassis
- ✓ BSS boom suspension (optional)
- ✓ Independent stabilisers
- ✓ Tier 3 100 HP engine
- ✓ Load Sensing hydraulic pump
- ✓ Quick coupling of the Tac-Lock attachments

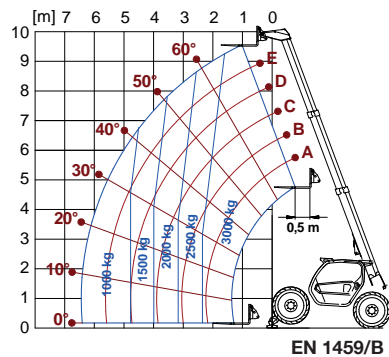


PANORAMIC WITH STABILISERS

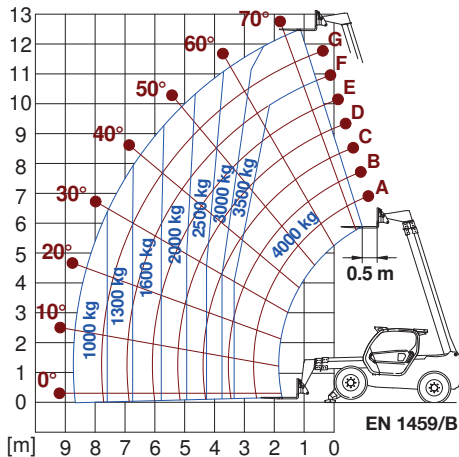
P30.10EE, P40.13EE, P40.17EE and P50.18EE with stabilisers

Record performances and reliability

P30.10EE WITH FORKS ON STABILISERS



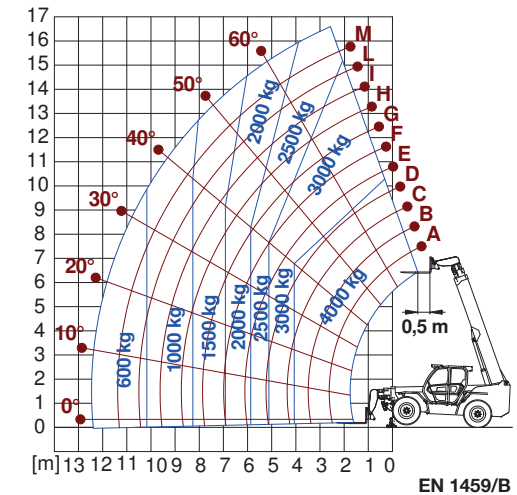
P40.13EE WITH FORKS ON STABILISERS



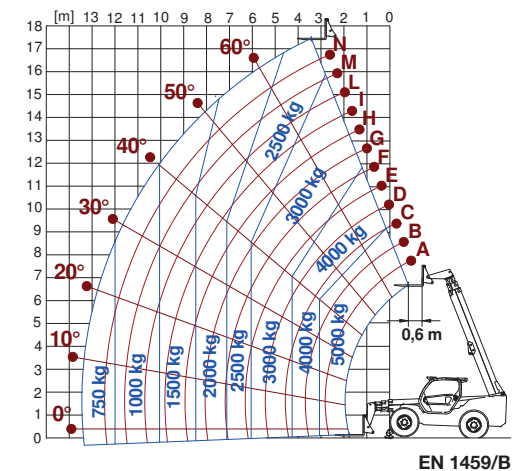
The Panoramic range, launched in 1987 and expertly evolved over the years, stands out today for the standard of technical and technological solutions that elevate it to the top of the league in terms of performance, comfort and safety in the world of construction and industry. The main features of the new Panoramic range are: the new high-comfort cab; the new axles; the completely revamped stabilisers and chassis; and the use of the attachment recognition system, a technology that increases safety standards without compromising performance.

TECHNICAL INFORMATION	P30.10EE	P40.13EE	P40.17EE	P50.18EE
Total unladen mass, with forks (kg)	7100	9300	11670	13300
Maximum capacity (kg)	3000	4000	4000	5000
Lift height (m)	9,6	12,5	16,6	17,5
Boom side shift (mm)	-	+/- 340	+/- 435	+/- 445
Frame levelling (%)	-	+/- 8	+/- 8	+/- 8
Turbo engine (brand/cylinders)	Kubota/4	Kubota/4	Kubota/4	Kubota/4
Engine Power (kW/HP)	74/100	74/100	74/100	74/100
Hydrostatic transmission	2 speeds	2 speeds	2 speeds	2 speeds
Maximum speed (km/h)	40	40	40	40
Hydraulic pump	LS+FS	LS	LS	LS
Flow/pressure (l/min - bar)	117-210	104 - 250	104 - 250	104 - 250
Stabilizers	in outline	in outline	in outline	in outline
Width (mm)	2100	2240	2420	2460
Height (mm)	2120 (2020 L)	2425	2500	2535
Length (mm)	4600	5410	5970	6190

P40.17EE WITH FORKS ON STABILISERS



P50.18EE WITH FORKS ON STABILISERS





- ✓ Largest cab in category Best comfort level
- ✓ Cab complies with ROPS and FOPS level II standards
- ✓ Tilt corrector and boom side shift as standard
- ✓ Load Sensing hydraulics as standard

P120.10 EE:

- ✓ HM Power of 170 HP
- ✓ Regenerative system (as standard)
- ✓ Electronic joystick as standard

HIGH CAPACITY PANORAMIC EE

High Capacity Panoramic, high specification for high performance

Even more advantages and benefits

The front-mounted Merlo telehandlers are supplemented by high-flow machines, called Panoramic HM: a concentration of Merlo technologies that includes the EPD electronically controlled hydrostatic transmission, the continuously variable MCVTronic gearbox, the chassis levelling system, the boom side shift, and the attachment recognition safety system. The range consists of two models, P72.10EE and P120.10HMEE, capable of lifting up to 7 and 12 tonnes of material and with a 10-metre boom.



TECHNICAL INFORMATION

Total unladen mass, with forks (kg)
 Maximum capacity (kg)
 Lift height (m)
 Boom side shift (mm)
 Frame levelling (%)
 Turbo engine (brand/cylinders)
 Engine Power (kW/HP)
 Hydrostatic transmission
 Maximum speed (km/h)
 Hydraulic pump
 Flow/pressure (l/min - bar)
 Stabilizers
 Width (mm)
 Height (mm)
 Length (mm)

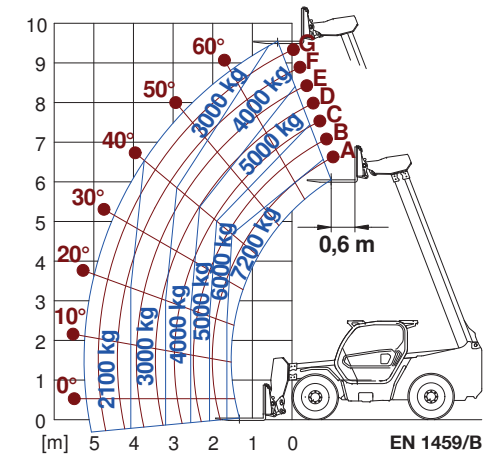
P72.10EE

10950
 7200
 9,6
 +/- 250
 +/- 8
 Kubota/4
 74/100
 2 speeds
 40
 LS
 104 - 250
 -
 2330
 2455
 5484

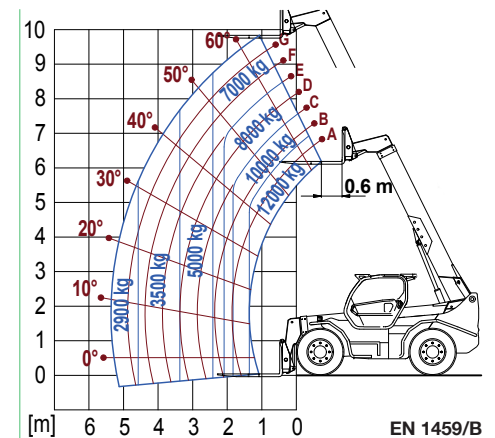
P120.10HMEE

16200
 12000
 9,8
 +/- 185
 +/- 8
 FPT NEF45/4
 125/170
 EPD + CVT
 40
 LS + FS
 119 - 210
 -
 2470
 2850
 5720

P72.10EE WITH FORKS



P120.10HMEE WITH FORKS





ROTO EE

New ROTO range: the telehandlers with rotating turret by definition

ROTO40.16EE and ROTO40.18EE capacities of 4000 kg, heights of 16 m and 18 m

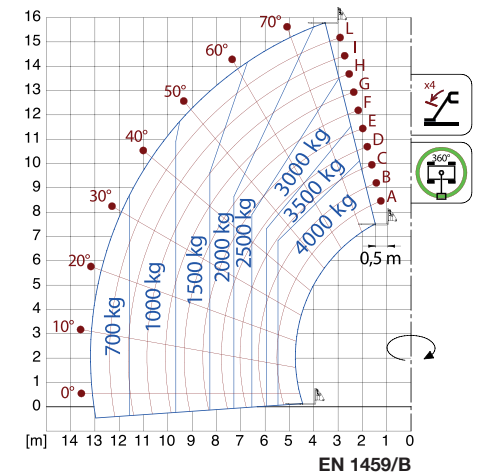
We first launched the Roto range with rotating turret in 1991. Today we present the new Roto generation, developed on the modern modular chassis concept, which is even more innovative, versatile and high performing. New cab with improved ergonomics: second-level FOPS and ROPS standard, new electronically controlled EPD hydrostatic transmission to minimise fuel consumption, Load Sensing and Flow Sharing hydraulic system to ensure maximum speed and movement precision, and carrying capacities of 4000kg with lift height of 16 or 18 metres.



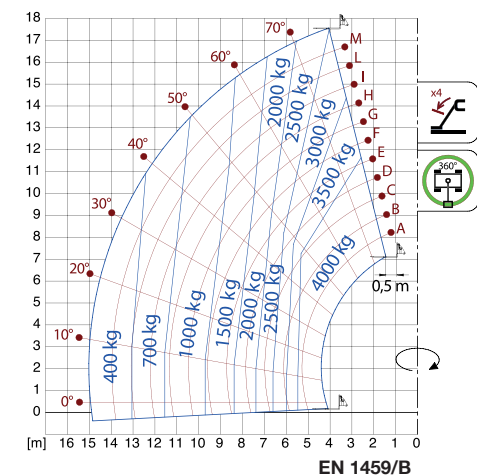
TECHNICAL INFORMATION

	ROTO 40.16EE	ROTO 40.18EE
Total unladen mass, with forks (kg)	12900	13500
Maximum capacity (kg)	4000	4000
Lift height (m)	15,8	17,7
Boom side shift (mm)	-	-
Frame levelling (%)	-	-
Turret rotation (degrees)	+/- 208	+/- 208
Turbo engine (brand/cylinders)	Deutz/4	Deutz/4
Engine Power (kW/HP)	80/107	80/107
Hydrostatic transmission	2 speeds	2 speeds
Maximum speed (km/h)	25	25
Hydraulic pump	LS + FS	LS + FS
Flow/pressure (l/min - bar)	103,5 - 250	103,5 - 250
Stabilizers	On/Off	On/Off
Width (mm)	2240	2240
Height (mm)	3010	3010
Length (mm)	6280	6030

ROTO40.16EE
FORKS ON STABILISERS ON 360°



ROTO40.18EE
FORKS ON STABILISERS ON 360°





DBM

With forty years of experience in the design and manufacture of self-loading concrete mixers, Merlo offers a **compact and efficient range which is ideal for places that are hard to reach** for the conventional concrete mixers or for those needing to **produce high quality concrete right at the building site**.

The DBM models make it possible to produce quickly at the work site mixtures of various types, from the most fluid mortars to low slump concrete, in the quantities requested and at the precise moment it is poured, with innumerable advantages compared to the traditional system of pre-packaged concrete.



A proven technology for economic and efficient production, transport and pouring of concrete

2 models of self-loading concrete mixers with 2,5 m³ and 3,5 m³ capacity, with 700 litres loader

MODEL	DBM2500EE	DBM3500EE
Total unladen weight (kg)	6100	7200
Concrete yield capacity (Slump 8 cm max)	2 500	3500
Drum geometrical volume (l)	3500	5 000
Loader capacity (l)	700	700
Water tank capacity (l)	950	950
Water pump capacity (l/min)	250	250
Maximum unloading height		
• without under conveyor chute (mm)	1930	2285
• with chute (mm)	1715	2100
Drum rotation speed (rpm)	0÷26	0÷18
Turbo engine with low emissions (Euro 3)	Deutz	Deutz
Power (kW/HP)	75/102	75/102
Steering mode	Four wheel drive with three steering modes	
Disc brakes on all four wheels	Automatically locking parking brake	
Maximum operating slope		
• unladen (%)	55	50
• fully laden (%)	45	40
Maximum slope (%)	15	15
1 st gear	11	11
2 nd gear	40	40
Width (mm)	2335	2335
Height (mm)	2880	3160
Length (mm)	6040	6480



TRE EMME

High-performance tool carrier tractors. 4 models from 135 to 350 HP

High performance machines that are perfect for forestry management, highways, railways and contract work

Multi-purpose machines designed for complex tasks, with excellent performance and easy to use: Merlo offers a wide range of high power tool carriers that are ideal for forestry and silviculture, snow clearance and road/railway maintenance.

With a vast range of attachments and mechanical, hydraulic and electronic power transmission systems, these machines perform all kinds of tasks with maximum efficiency and productivity. Compact dimensions, excellent manoeuvrability, operator comfort and exclusive 360° visibility make these machines ideal for professionals who can't compromise on results.

- ✓ **B series: forestry tractors.** 2 models with powers of 200 and 350 HP.
- ✓ **MC series: multifunctional tool-holder for municipalities and contract work.** 2 models with powers of 135 and 156 HP.



TECHNICAL INFORMATION	MM 180 B	MM 350 B	MM 135 MC	MM 160 MC
Power (kW/HP)	147/200	260/350	100/135	115/156
Max. speed (km/h)	40	36	40	40
Unladen mass (kg)	7000	9200	7100	8400
Hydraulic PTO (l/min-bar)	300-420	500-420	130-350	130-350

CINGO

Tireless, unbeatable, incomparable. These machines go everywhere - with excellent performance

All the experience of Merlo applied to compact multi-purpose tool carriers



Cingo universal caterpillar track tool carriers with hydrostatic transmission incorporate unique technology and deliver exclusive performance. Their applications are almost endless and they're particularly useful where a conventional 4 x 4 can't arrive.

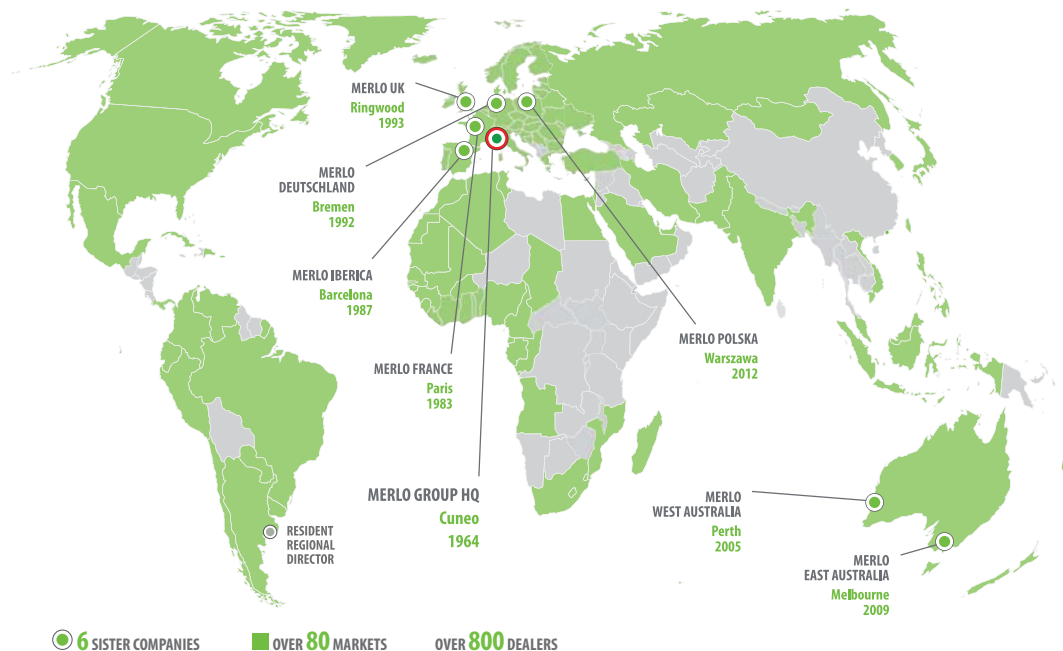
An exclusive, patented system for quickly swapping any number of interchangeable attachments make this machine ready for work in a question of seconds in all kinds of environments. Smooth movement, progressive control, total power transfer and maximum versatility: those are the winning characteristics of the Cingo system.

The latest models come equipped with planetary gearmotors which transmit torque directly to the caterpillar tracks for maximum traction. With built-in parking brakes for maximum safety.



CINGO MODELS	CONVEYORS	MULTI-PURPOSE	UNIVERSAL TOOL CARRIER
--------------	-----------	---------------	------------------------

TECHNICAL INFORMATION	M500	M800 TD	M8.3 TDPlus	M8.3 Plus	M12.3 EVO	M4.3 Turbo
Load (kg)	500	800	800	800	1200	400
Engine	Petrol	Petrol	Diesel	Diesel	Diesel	Diesel
Power (kW)	4.1	8.7	12.5	12.5	14.9	24.5
Transmission	Hydraulic	Hydraulic	Hydrostatic	Hydrostatic	Hydrostatic	Hydrostatic
Quick attachment coupling	-	-	-	YES	YES	-



TRAINING CENTRE

The Merlo Training and Research Centre (CFRM) has made safety training and instruction in the use of the machine its mission. The CFRM provides training courses for operators of person-carrying overhead platforms, forklift trucks, telehandlers, cranes, earth-moving machinery, agricultural and forestry tractors, snow ploughs and urban cleaning vehicles.



Countries where Merlo is a market leader



MOVIMATICA MERLO INFOMOBILITY

Is the new system, conceived and built within the Merlo Group, for managing vehicles remotely: it enables GPS radio-localisation in real time, monitoring operation and use, receive and manage malfunction or burglar alarms and also send commands for handling events via the internet.



THE MERLO WORLD

In a globalised world, **the customer always comes first!**

From excellent products to excellent service. In 2008, Merlo has adapted its production process to meet the needs of the ISO 9001 quality control system. The process is perfected and improved continuously.

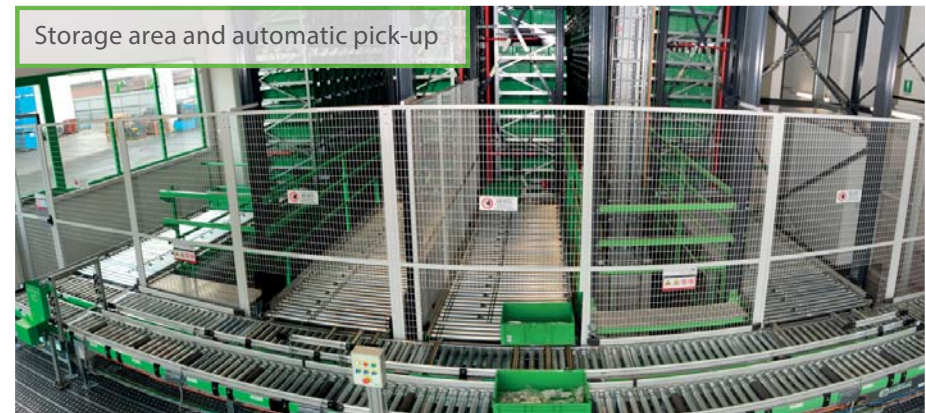
At the same time, the foundations have been laid to put the Customer first, implementing investments aimed at Services such as Financing, Aftersales training, Spare parts and Telematic Means such as remote diagnostics, thanks to the Merlo Mobility project.



NEW PARTS CENTRE

The new spare parts warehouse covers an area of 7,000 m², with storage capacity for of 10,000 m³ for a total of 20,000 different codes. Furthermore, it can automatically manage 94% of the order lines that are processed daily, with an average withdrawal time of 30" per line.

The first fill per order line is over 99% with delivery times for urgent orders within 24 hours.



Storage area and automatic pick-up



Order processing and shipment area

OVER 50 YEARS
OF CONSTANT COMMITMENT
TO WORKING
TOGETHER WITH YOU



MERLO S.P.A.

Via Nazionale, 9 - 12010 S. Defendente di Cervasca - Cuneo - Italia

Tel. +39 0171 614111 - Fax +39 0171 684101

www.merlo.com - info@merlo.com

The Telehandlers outlined in this documentation can be equipped with optional or special accessories that are not included in standard equipment but only on request.

In certain countries, not all models or attachments may be available because of market or regulatory restrictions.

Technical data and information are up-to-date at the time of printing this documentation. Merlo reserves the right to make modifications arising from natural technological evolution without any obligation on its part.

Your trusted Merlo Dealer will be delighted to provide you with all updates concerning our products and services.