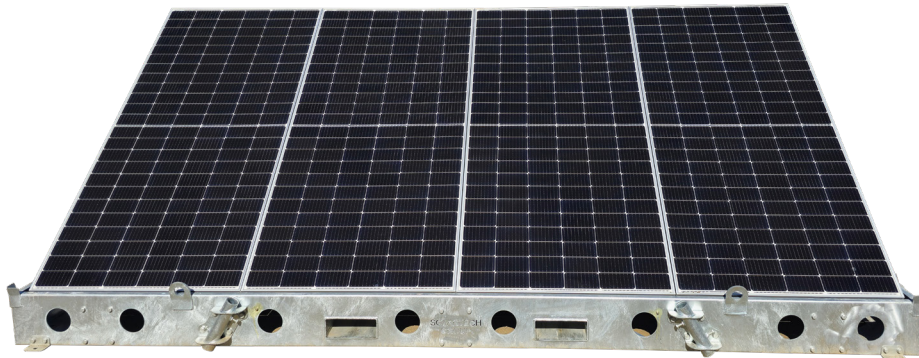
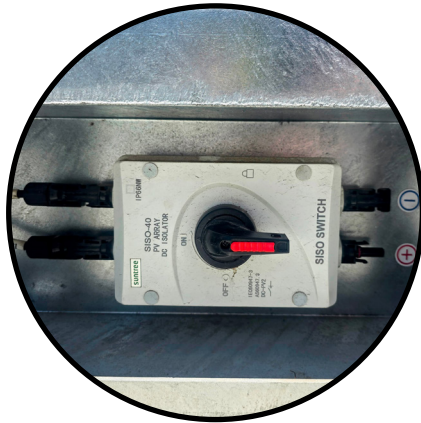


Our patented rapid deployment solar skid is a modular unit that can be scaled to suit any requirement. Deployed in minutes to suit temporary use such as after bushfires or floods or on construction projects to minimise install/removal time and site impact.

The Solar Skid can be adjusted from zero to 40 degrees making it ideal to use in different regions to maximise solar yield. Constructed on a hot dip galvanised frame to ensure a long service life and structural rigidity.



## PRODUCT SPECIFICATIONS

### FEATURES

|                  |  |
|------------------|--|
| Mounting         | Ballast, Tube piles, Bolt-down anchor points |
| Solar Tilt Angle | 0° - 40° one man lift                        |
| Transport        | Forklift ports, Interlocking stacking        |
| Deployment       | Interlocking in rows                         |
| Safety           | PV Isolator with MC4 Connectors              |

### GENERAL

|               |         |
|---------------|---------|
| Power         | 1.78kWp |
| Voltage (Voc) | 196.8v  |
| Current (Isc) | 11.45A  |

### UNIT

|                    |                         |
|--------------------|-------------------------|
| Dimensions (HxWxD) | 4455mm x 2240mm x 300mm |
| Weight             | 750kg                   |
| Per 40' flat bed   | 22                      |
| Rapid Deploy       |                         |

