



LIGHT METAL BALER

AMB-H1075
PRODUCT DETAILS



南通恩派特机械有限公司

- Product name, model no., usage, appearance, overview
- Technical Information
- Equipment Structure
- Hydraulic system
- Electrical System
- Advantages

- **Product Name:** Automatic light metal baler, UBC baler
- **Model No.:** AMB-H1075 (as a sample)
- **Usage:** to press non ferrous metal scrap, such as UBC, light aluminum scrap, scrap copper etc.
- **Appearance:** frame structure, oil cylinder (main cylinder, side cylinder, door cylinder) , hopper, hydraulic system, electrical system, conveyor(optional).
- **Overview:** Automatic metal baler with hopper, 100T main press force, bale size: 300x300mm, bale weight: 3.8-11.6KGS, output:60-90 bales/h (approx. 600-800kgs per hour) 。



No.	Parameter	Unit
1	Main Press Force	100 t
2	Bale Size	300x300 mm
3	Bale Weight	3.8-11.6 kgs
4	Output	600-800 kgs/h
5	Motor	30 kw
6	Pump	250 ml/r
7	Cycle time	Approx. 40-60S
8	Machine Size	3460x1630x1450mm
9	Oil box Size	1870x2030x2050mm
	Electrical Box Size	370x960x700mm
	Hopper Size	1650x2040x800mm
10	Machine Weight	6T

Yellow Hopper

Push material
Cylinder

Side main Cylinder

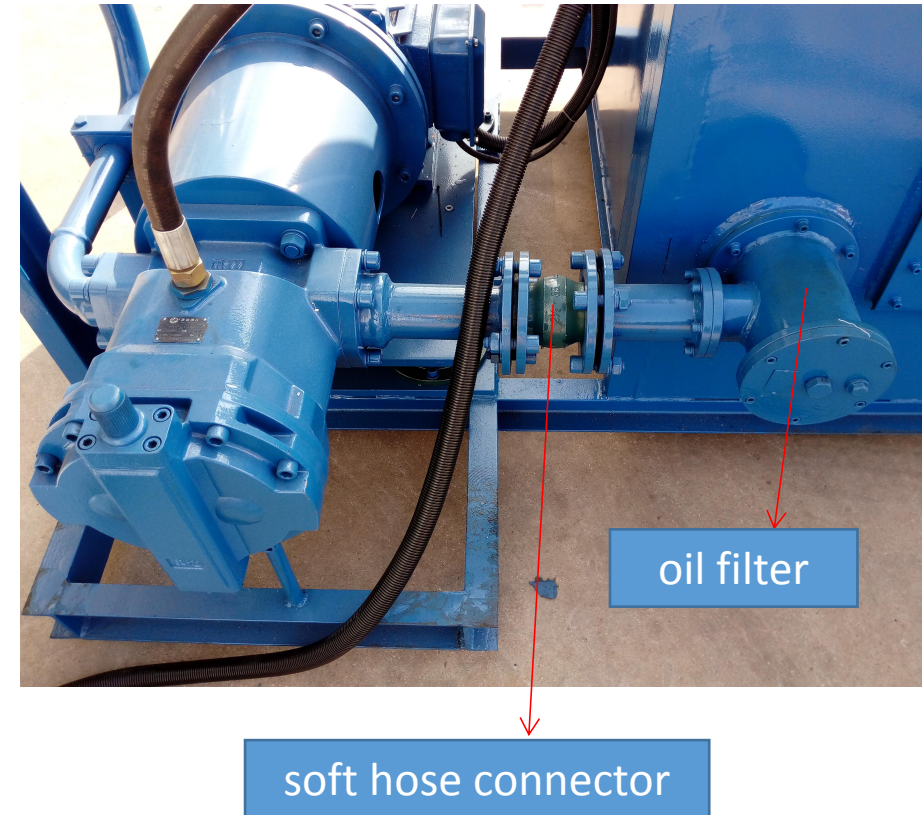
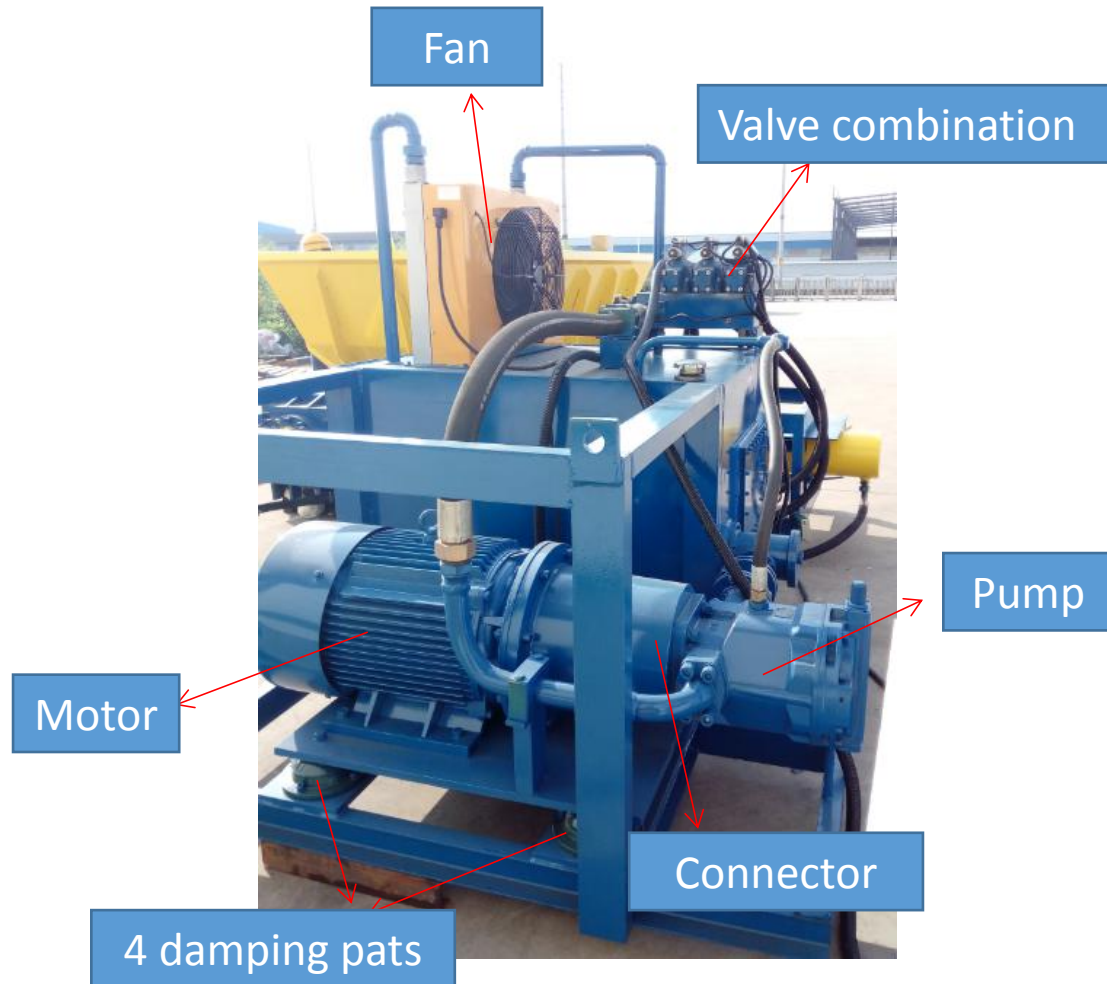
Magnetic conveyor



Hydraulic System

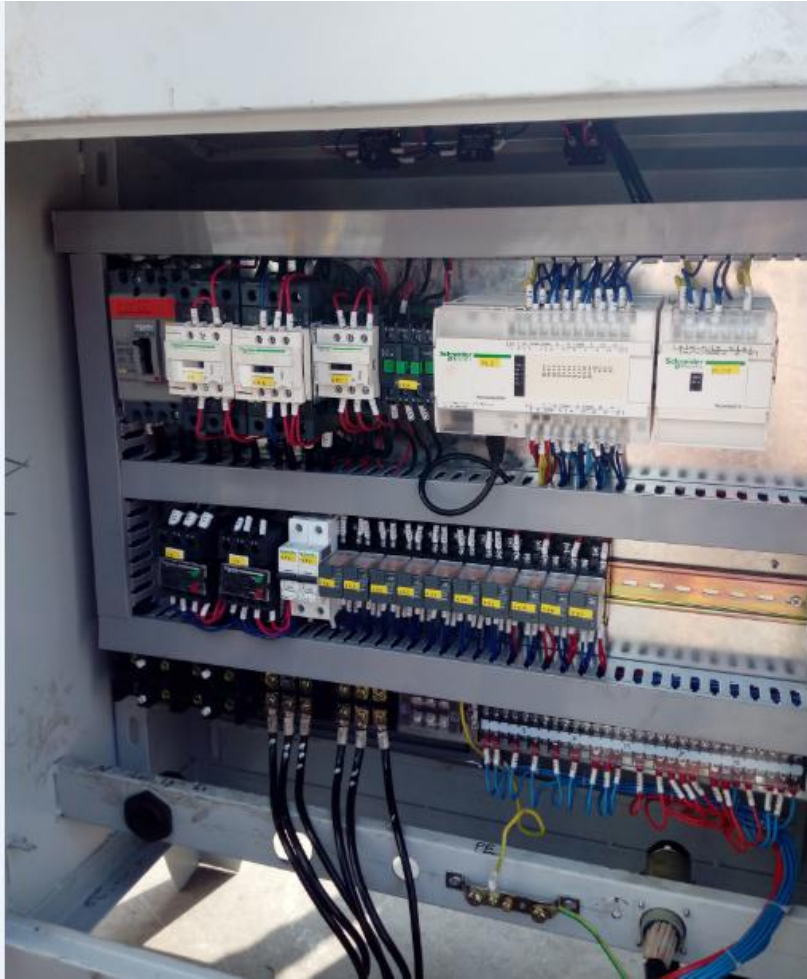
Door Cylinder

Automatic Metal Baler (Hopper Style)



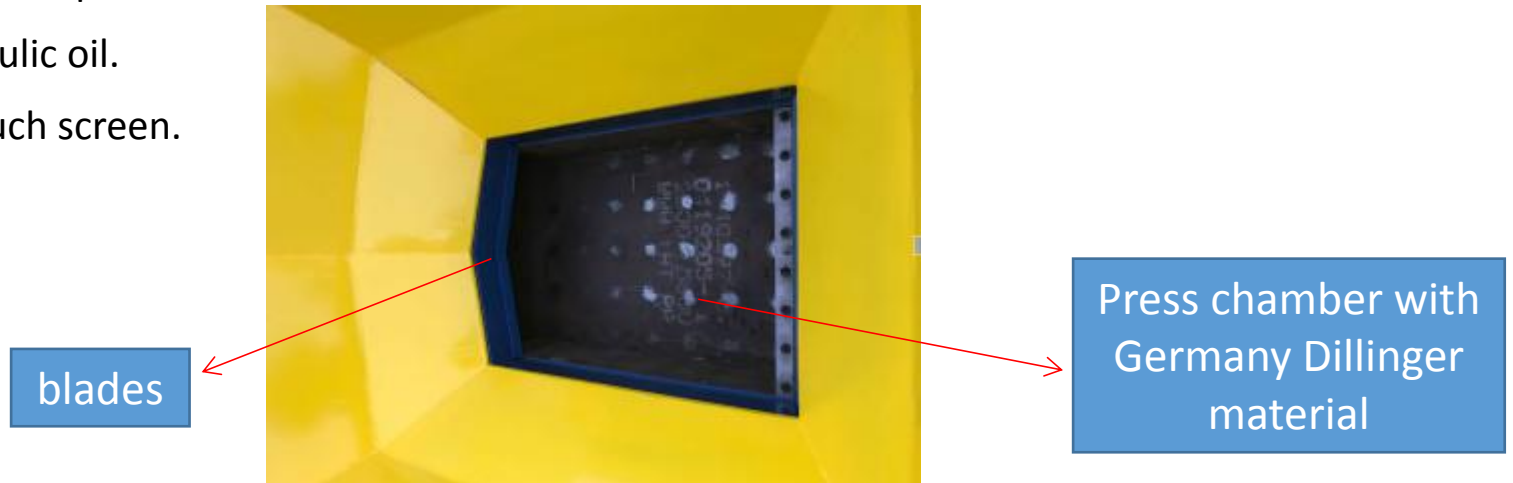
- The hydraulic system adopts the frame structure, oil pump is arranged on the side of the tank, the hydraulic oil in the tank is directly extracted, the hydraulic system is quickly supplied to the hydraulic valve group system to ensure the rapid advance of the hydraulic cylinder to do the piston movement;
- Equipped with oil filter;
- Using soft hose to connect the oil filter and the oil pump. When the machine is working, it can be shocked to protect the pump and motor.
- The motor base is equipped with four damping pads.





Schneider Electrical System

- Automatic mode: Use the key to start the power, press the reset button, and then manual or conveyor feeding materials, then press automatic operation button, till bale is out;
- Internal press chamber and master cylinder head are with Germany Dillinger material, high strength, high wear resistance.
- The front end of the feed chamber is equipped with a blade, and the side cylinder is pushed in place, and the excess waste can be cut off at the same time.
- Large-capacity hopper design, with the compression chamber connected straight down, not blocking material.
- Italy ATOS pressure sensor, you can set the pressure on the touch screen.
- The fan cooling system cools the hydraulic oil.
- Schneider's electrical system, PLC + touch screen.
- H-type hose connector, do not leak oil.



Model No.	AMB-H1075	AMB-H1510	AMB-H2010-1	AMB-H2017
(T)	100	100	125	125
Press chamber size (mm)	1000x750	1500x1000	2000x1000	2000x1750
Bale Size (mm)	280-300x280-300	350x350	400x400	400x400
Output (bales/h)	60	60	60	60
Motor power(kw)	30	37	37x2	37x2
pump	250	250	250x2	250x2
Machine weight(T)	6	7.5	11	13



THANKS



ENERPAT

南通恩派特机械有限公司