



Model: PSR-TM20DPB-E2

Features

18mm threaded cylindrical installation or side installation, it is an ideal substitute for various styles of sensors;

Large angle, long distance, easy to install and debug;

With 360° visible bright LED status indicator;

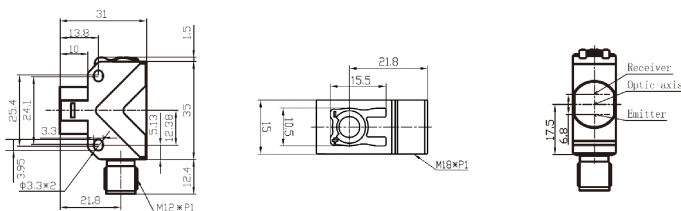
Part Number

	Emitter	Receiver		Emitter	Receiver
NPN	PSR-TM20D-E2	PSR-TM20DNB-E2	PNP	PSR-TM20D-E2	PSR-TM20DPB-E2

Technical Specifications

Detection type	Through beam	Anti-ambient light	Anti-ambient light interference < 10,000lx;
Rated distance	0...20m		Incandescent light interference < 3,000lx
Light source	Infrared LED (850nm)	Indicator display	Green light: power indicator
Standard target	> ϕ 15mm opaque object		Yellow light: output indication, short circuit or
Light source	Infrared LED (850nm)		overload indication (flashing)
Direction angle	> 4°	Ambient temperature	-15°C...60°C
Output	NO/NC	Ambient humidity	35-95%RH (non-condensing)
Supply voltage	10...30 VDC	Voltage withstand	1000V/AC 50/60Hz 60s
Load current	≤ 100mA	Insulation resistance	≥ 50M Ω (500VDC)
Residual voltage	≤ 1V (Receiver)	Vibration resistance	10...50Hz (0.5mm)
Distance adjustment	Single-turn potentiometer	Degree of protection	IP67
Consumption current	≤ 15mA (Emitter)、≤ 18mA (Receiver)	Housing material	ABS
Circuit protection	Short-circuit, overload, reverse polarity and zener protection.		
Response time	≤ 1ms	Installation method	Composite installation
NO/NC adjustment	NO: 2 feet is connected to the positive electrode;	Weight	10g
	NC: 2 feet is connected to the negative electrode;	Connection type	M12 Connector

Dimensions



Wiring Diagram

