



# ECO6 VET

More Advance More Powerful



CHISON **ECO6 VET**, offers lots of advanced capabilities in this small packages, specially engineered for veterinary imaging in both small animals and large animals. It is a powerful veterinary ultrasound system for every species and every application, whether in the clinics or outdoor.



- ✓ *CW mode for high velocity detection.*
- ✓ *Triplex mode for efficient diagnose.*
- ✓ *Built-in battery for outdoor scanning.*
- ✓ *Compact and light weight design for convenient traveling.*
- ✓ *CPA and DPD mode for good color sensitivity.*
- ✓ *2D steer: for more details.*
- ✓ *Supper needle for more clear needles display.*



# Wide range of applications



- Smaller footprint , easy to target whole body
- Ergonomic design, release from scanning fatigue
- Higher frequency, obtain near field image
- Lower weight, easy to carry, easy to scan



- High frequency linear probe with good resolution and Penetration
- Frequency range:5.3MHz-10.0MHz
- Excellent choice for superficial scanning: tendon, testicle, intestine



- Dedicated linear-rectal probe for large animal's reproduction
- Black color for durable usage, easy to clean
- Ultra-long cable to keep the system for the safe distance

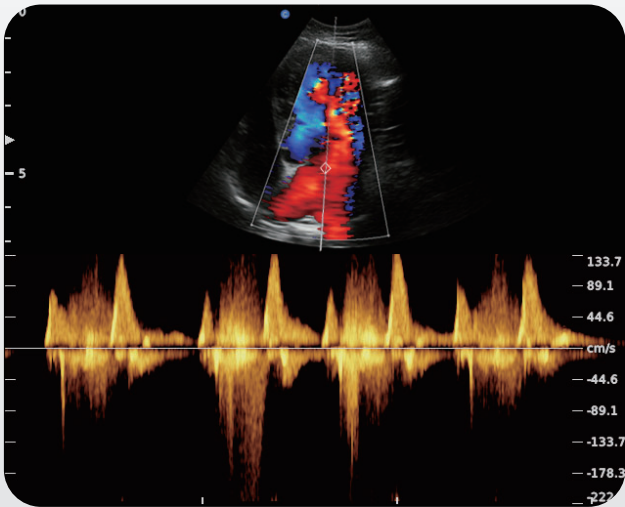
# Professional Veterinary Packages

-- Dedicated vet reports and professional vet calculation packages

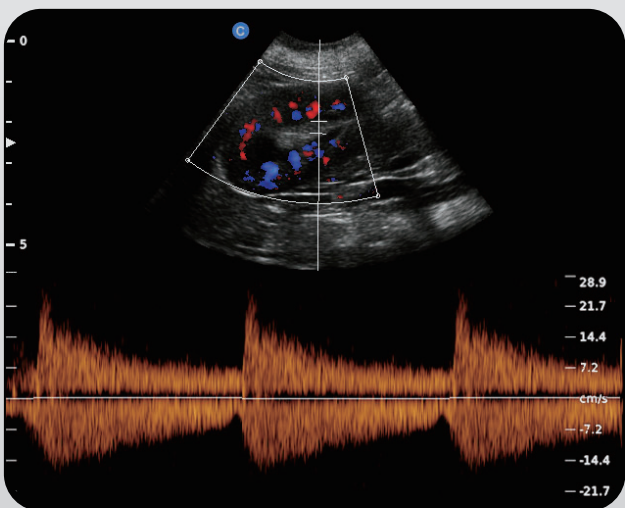
Cardiology	Canine	Feline	Ovine	Equine	Bovine
Distance	GSD	HD	BPD	GSD	BPD
+ Single Plane	- CRL	- BD	- CRL	+ Volume	- CRL
+ Biplane Ellipse	HD	+ Volume	- TD	+ Thyroid	- TD
+ Bullet Method	- BD	+ Thyroid	- GSD	+ Bladder Volume	+ Volume
+ Modified Simpson	+ Volume	+ Bladder Volume	+ Volume	Report	+ Thyroid
Report	+ Thyroid	Report	+ Thyroid		+ Bladder Volume
	+ Bladder Volume	Report	+ Bladder Volume		Report
	Report		Report		



# How to Get Satisfying **CW** **Save 50%** Budget?



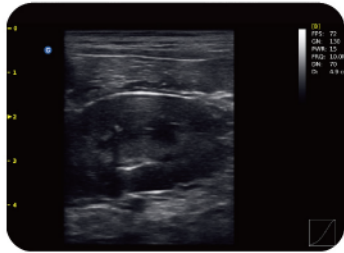
Innovative CHISON micro convex probe can cover both abdomen and cardiac diagnosis with outstanding performance and professional **CW** function like phased array probe but costs less **50%** budget.



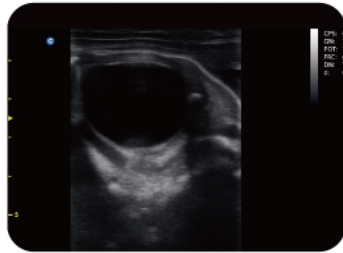
**Triplex Mode:** combine B, color and PW together , very convenient for small animal examination, a perfect solution for small animal's quick breathing and rapid organ movement, help to catch the doppler spectrum easily !

Function in **VET** and

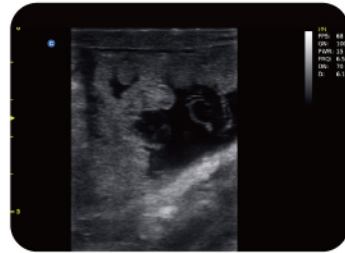




Canine kidney,B Mode



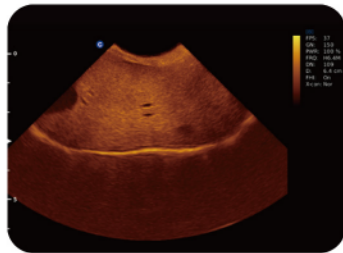
Equine Fetal Eyeball,B Mode



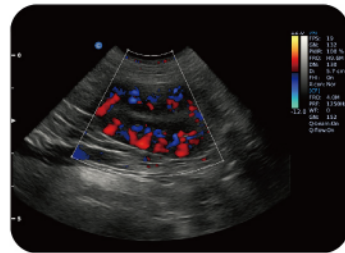
Equine Umbilical Cord,B Mode



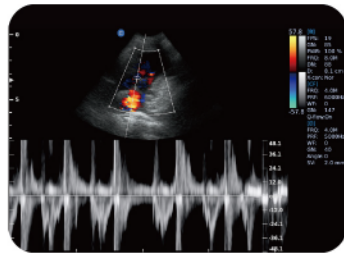
Canine Cardiac,B Mode



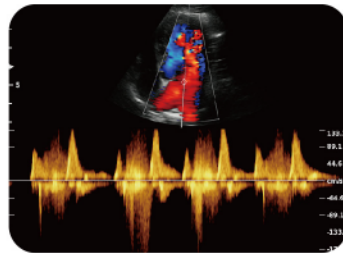
Canine Liver,Chroma



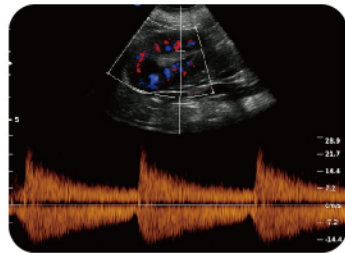
Canine Kidney,Color Mode



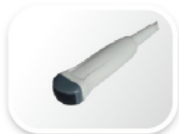
Canine Cardiac,PW Mode



Canine Cardiac,CW Mode



Canine Kindey,Triplex



4.5MHz-8.0MHz Micro-Convex  
MC6-A



5.3MHz-10.0MHz Linear  
L7M-A



5.3MHz-10.0MHz Linear Rectal  
L7V-A



2.5MHz-4.5MHz Phased Array  
P3-A



4.0MHz-7.0MHz Micro-Convex  
MC5V-A



2.5MHz-5.0MHz Micro-Convex  
MC3-A



5.0MHz-10.0MHz Trans-Rectal  
R7-A



5.3MHz-11.0MHz Linear  
L7S-A



2.5MHz-5.0MHz Convex  
C3-A

## CHISON Medical Technologies Co., Ltd.

### Sales & Service Contact Address:

No.9, Xinhuihuan Road, Xinwu District, Wuxi, Jiangsu, China 214028

TEL : 0086-510-85310593 / 85310937 FAX : 0086-510-85310726 EMAIL : export@chison.com.cn

We reserve the right to make changes to this catalogue without prior notice  
Please contact our local dealer for the latest information.

ECO6 VET-20170926

