



Wash your hands here

Your brand here



Wash your hands here



Your brand here



Stylish and durable, the Aquafil FlexiWash hand washing station offers a better way to wash your hands in public environments.

The unit features a sensor activated tap which helps to reduce the chances of cross contamination at touchpoints and customisable, interchangeable signage panels with graffiti protection. Optional extras include a hand towel dispenser, and a sensor activated soap dispenser. The unit also features high quality, readily serviceable components. The hand wash stations are designed to increase the availability of hand washing facilities in public environments as washing your hands properly can help prevent the spread of germs (like bacteria and viruses) that cause disease. Multiple customised signage panels provide a platform for branding and messaging. The vandal-resistant design increases the life span of the product making it an ideal solution for educational, commercial and community facilities as well as local council spaces.

Product features

- DDA-compliant wheelchair- accessible design
- Customisable, interchangeable signage panels with graffiti protection
- Sensor activated tap
- Freestanding
- Splashback

Additional options

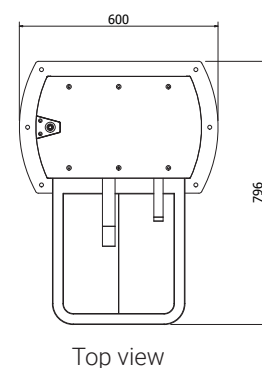
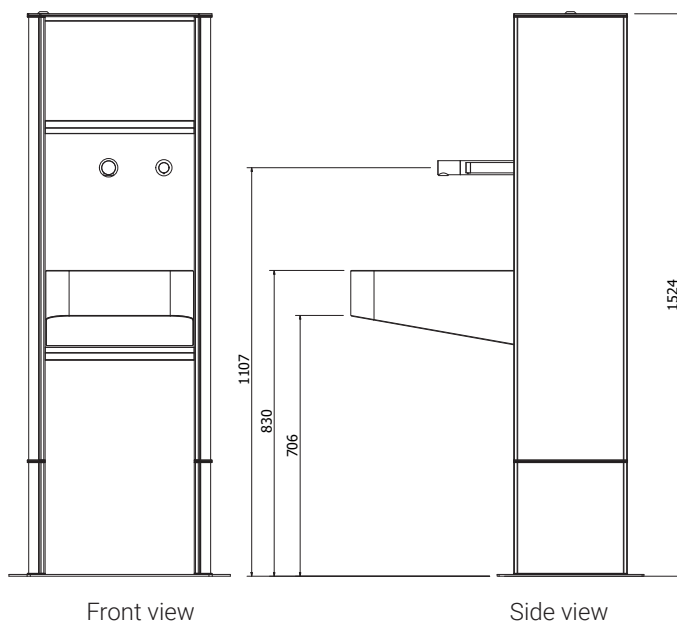
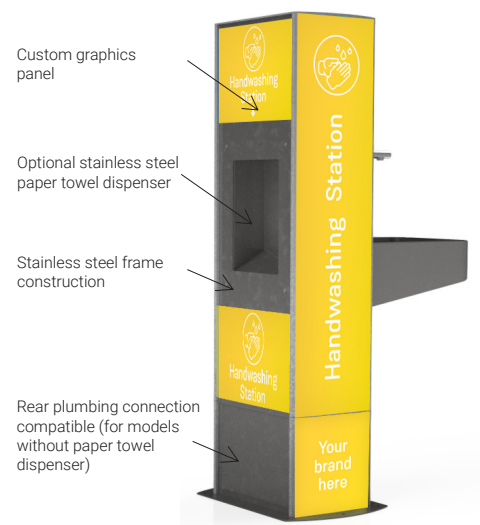
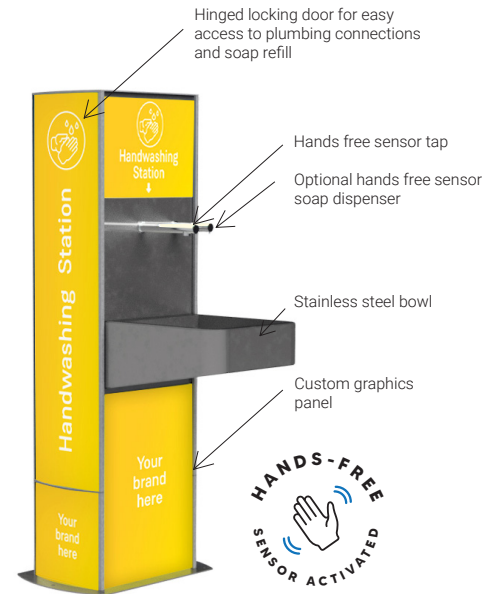
- Sensor activated soap dispenser
- Hand towel dispenser

Technical Details

Unit frame construction	Stainless steel
Sign panel housing	Anodised aluminium
Sensor tap	Battery operated
Sensor tap operating water pressure	0.5 - 8.0 bar
Sensor tap water connection	½ BSP female
Sensor soap dispenser	Battery operated
Soap holding capacity	minimum 1 litre
Drain connection	40mm

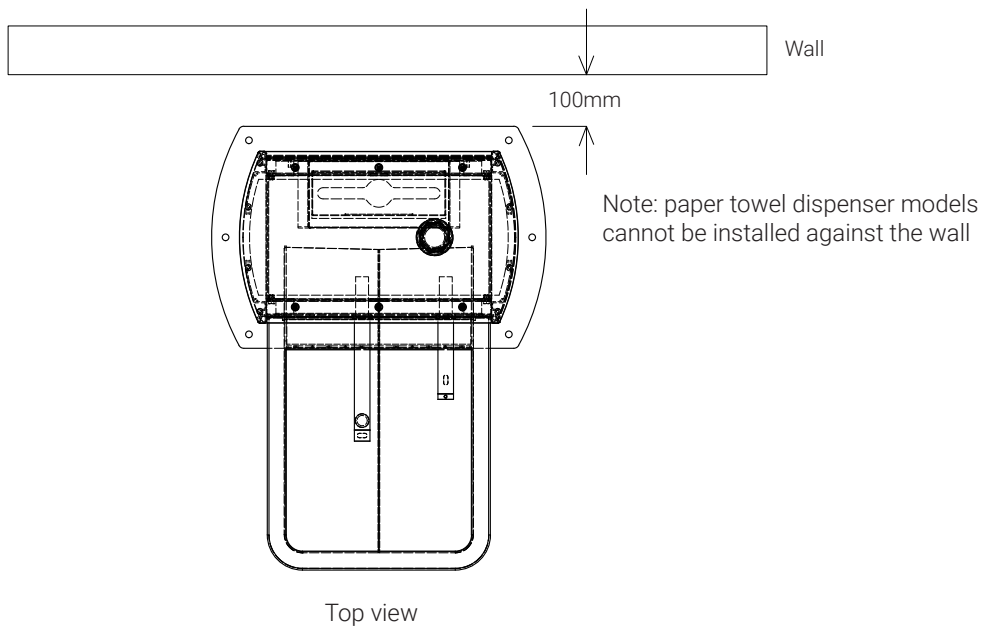
*Please refer to the Aquafil FlexiWash Product Warranty for full terms and conditions.

**For optimal performance in outdoor spaces, install the Aquafil FlexiWash station undercover or out of direct sunlight.

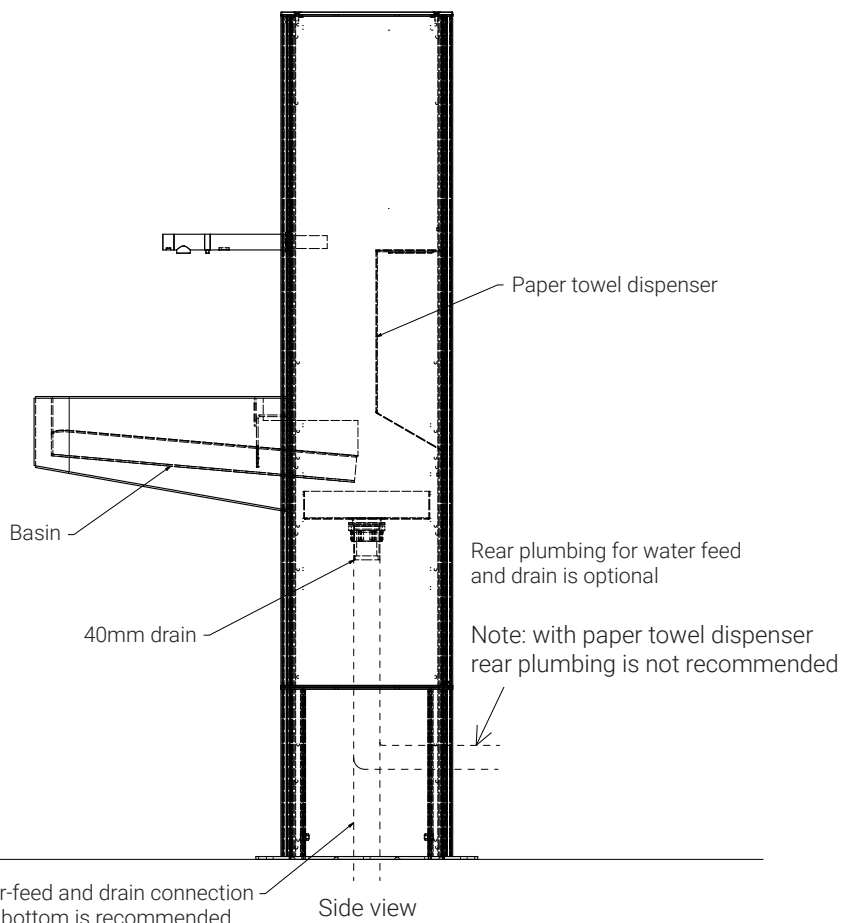
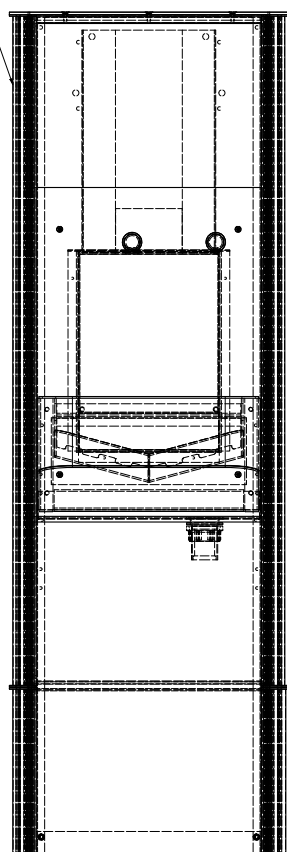


In keeping with our policy of continuing product improvement, CIVIQ reserves the right to change product specifications without notice. Please contact our team to get the most recent specifications.

Plumbing connections



Access internal via side door



In keeping with our policy of continuing product improvement, CIVIQ reserves the right to change product specifications without notice. Please contact our team to get the most recent specifications.