



The best industry  
software tools for the  
woodworking industry.

Authorised Hexagon  
reseller of:

CABINET VISION

[au.planit.com](http://au.planit.com)



A close-up photograph of a wooden workbench. The surface is covered with numerous light-colored wood shavings and a piece of wood that is being worked on. The background is blurred, showing more wood shavings and a dark wooden structure. The overall tone is warm and rustic.

# A dedication to craft.



# Design, present & manufacture.

Flexible choice of easy-to-use modular features.

CABINET VISION makes it simple for furniture, woodworking, or casework manufacturers of all sizes to play to their strengths, by using a single, fully modular software package to go from design to manufacture.

With CABINET VISION you buy only the features you need. This allows you to evolve and grow your software usage in line with your business, making CABINET VISION highly scalable and cost-effective.

You only buy the  
features you need.

Enhanced usability makes it even easier to visualise and efficiently perform a full range of tasks, while

responding to changing design requirements, whether making high-end bespoke pieces or basic elements.

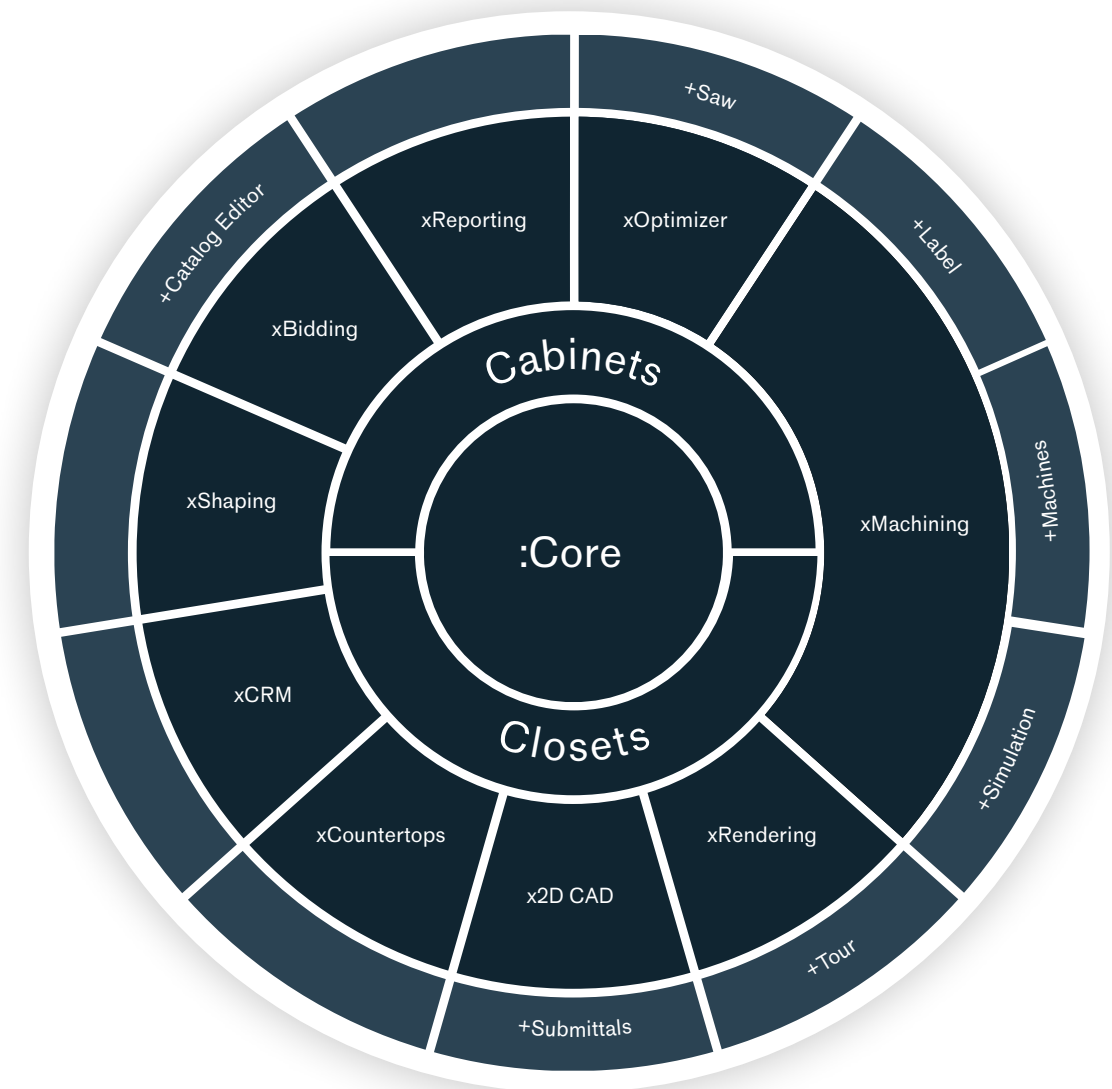
Fast, practical and precise, CABINET VISION excels at rapidly and seamlessly converting designs into all the information you need on the factory floor to manage the manufacturing process. And an intuitively simple parametric function means you can capitalise on previous bespoke designs by resizing elements without reprogramming. The result is a faithful reproduction of designs and the reduction of both time-consuming processes and human error.

CABINET VISION also enables you to support sales with features that include the production of professional reports that help customers understand and visualise the scope of services as well as the end product.





The building  
blocks of a  
successful business.



CABINET VISION provides you with a choice of core components that enable you to enhance productivity and improve quality and customer service within your chosen specialism. Each core component provides layout, cut listing, basic rendering and primary estimating functions.

Once you have chosen the core package that suits your needs, you can then opt to add specific modules, known as multipliers, in line with your individual manufacturing processes, business focus, customer requirements and employee growth plans.

Further additions are also available to enhance the capability of each multiplier, depending on the depth of functionality you seek.



# CABINET VISION Design

The ultimate custom  
showroom design tool.

CABINET VISION Design supports sales and profitability by creating professional, accurate designs, renderings and pricing estimates. Its interface is easy to use for both simple and complex projects, enabling designers to give customers a true representation of the look and cost of the finished product. CABINET VISION Design comes in three possible configurations, cabinets, closets, or both and lets you draw on a smart catalogue of products and objects so you can consistently design to manufacturers' standards.

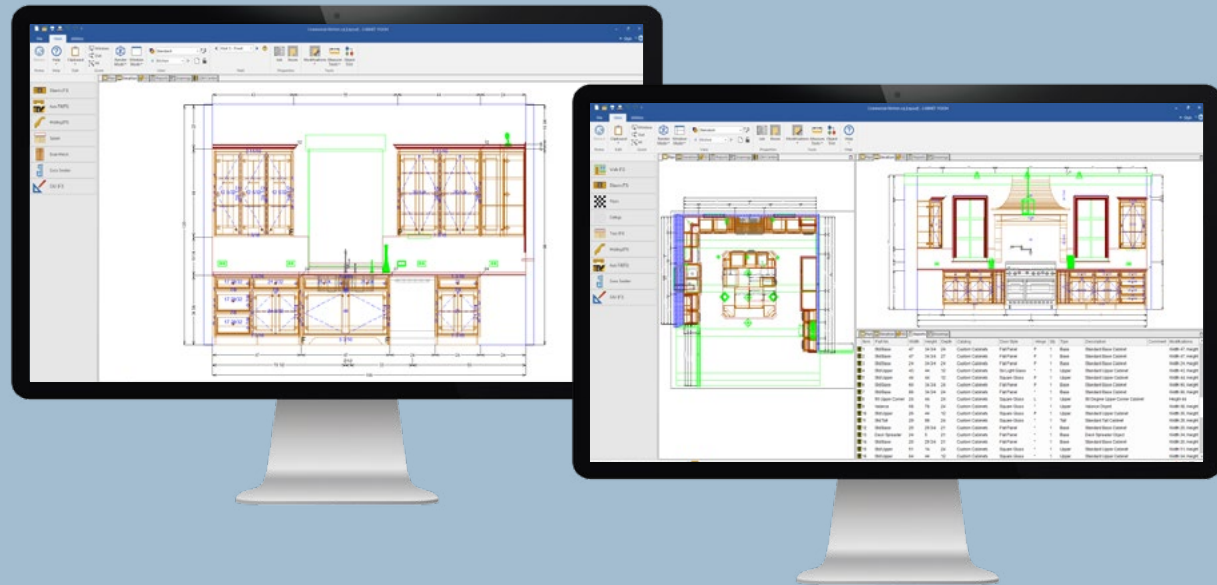
## Key Features

- Order entry, floor plan, elevations, 3D and assembly views
- Straight, angled, curved, cathedral, vaulted and peninsula walls
- Import and export orders (CSV, ORD, ORDx)
- Job costing
- Full rendering (photorealistic, cartoon, hand drawn and hatch)
- Basic 2D CAD
- Choose between cabinets or closets, or both



# Core Cabinets

The industry standard in cabinet engineering.



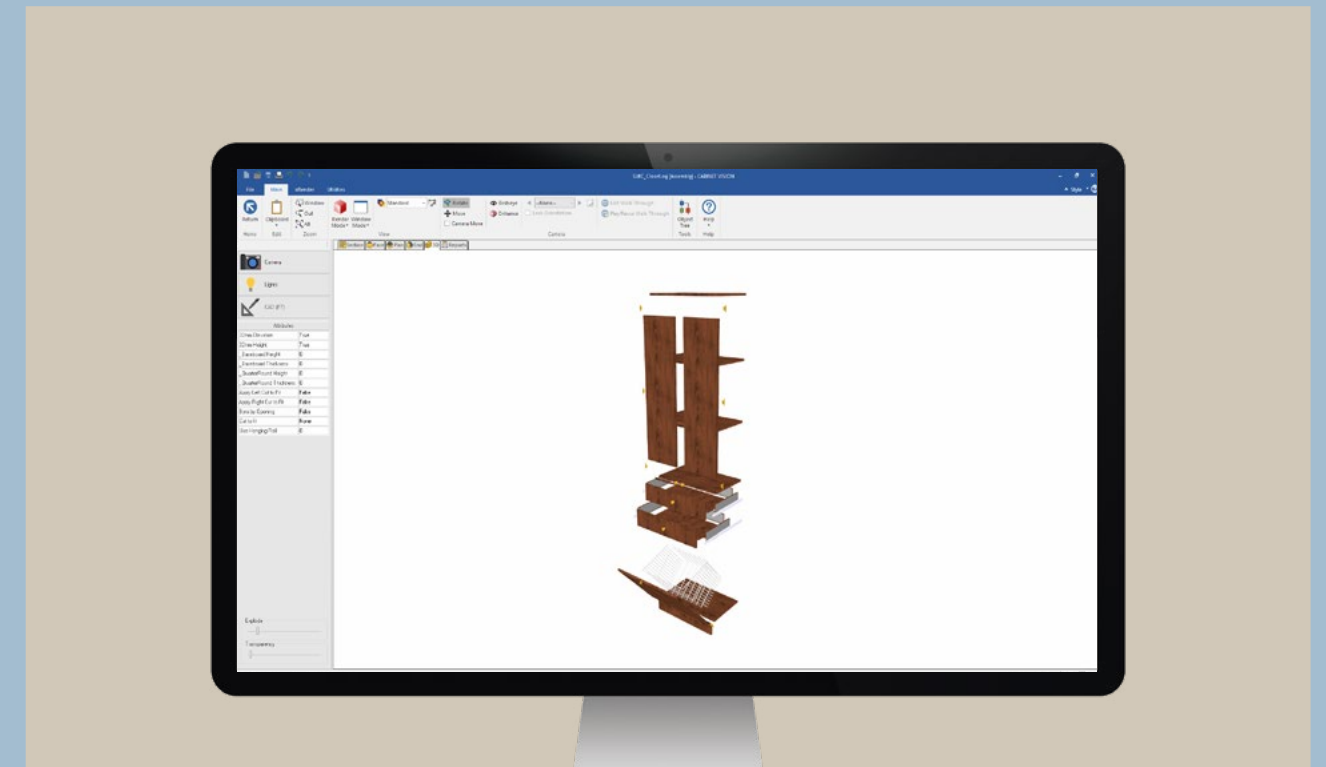
Core Cabinets is one of the central components of CABINET VISION. Intuitively easy-to-use, it allows you to create on-screen three-dimensional presentations of the final product while simultaneously generating the necessary production information for the shop floor.

Core Cabinets integrates 3D renderings, material requirements, assembly sheets and cutlists in a single system, so you can stay competitive by quickly and accurately estimating the cost of every job and keeping

track of expenditure. Core Cabinets automatically updates manufacturing operations following any changes to design, thereby saving you time and increasing accuracy. It also lets you create professional reports, designs and renderings to share with your customers. Whether manufacturing cabinetry for residential or commercial customers, or creating furniture woodworking, Core Cabinets has everything to define the engineering of your cabinetry.

## P Key Features

- Define cabinet construction methods
- Custom cabinet catalogue assemblies
- Order entry, floor plan, elevations, 3D and assembly views
- Straight, angled, curved, cathedral, vaulted and peninsula walls
- Import 3D models for materials
- Custom moulding and moulding set materials
- Basic job costing
- Simple renders
- Assembly, wall elevation and part sheets
- User defined object intelligence
- User created standards



# Core Closets

Outperform the competition when engineering closets.

Core Closets is a core element of CABINET VISION, providing you with all the essential tools for manufacturing closets. Designed for ease-of-use, Core Closets enables the creation of on-screen three-dimensional presentations of the final product while at the same time generating the production information required on the shop floor. Core Closets integrates 3D renderings, material requirements, assembly sheets and cutlists in a single system. It helps make you more competitive by quickly and accurately estimating the cost of every job and keeping track of expenditure. Core Closets also automatically updates manufacturing operations following any changes to design, thereby saving time and increasing accuracy. And with Core Closets it is easy to create professional reports, designs and renderings to share with your customers and much more.

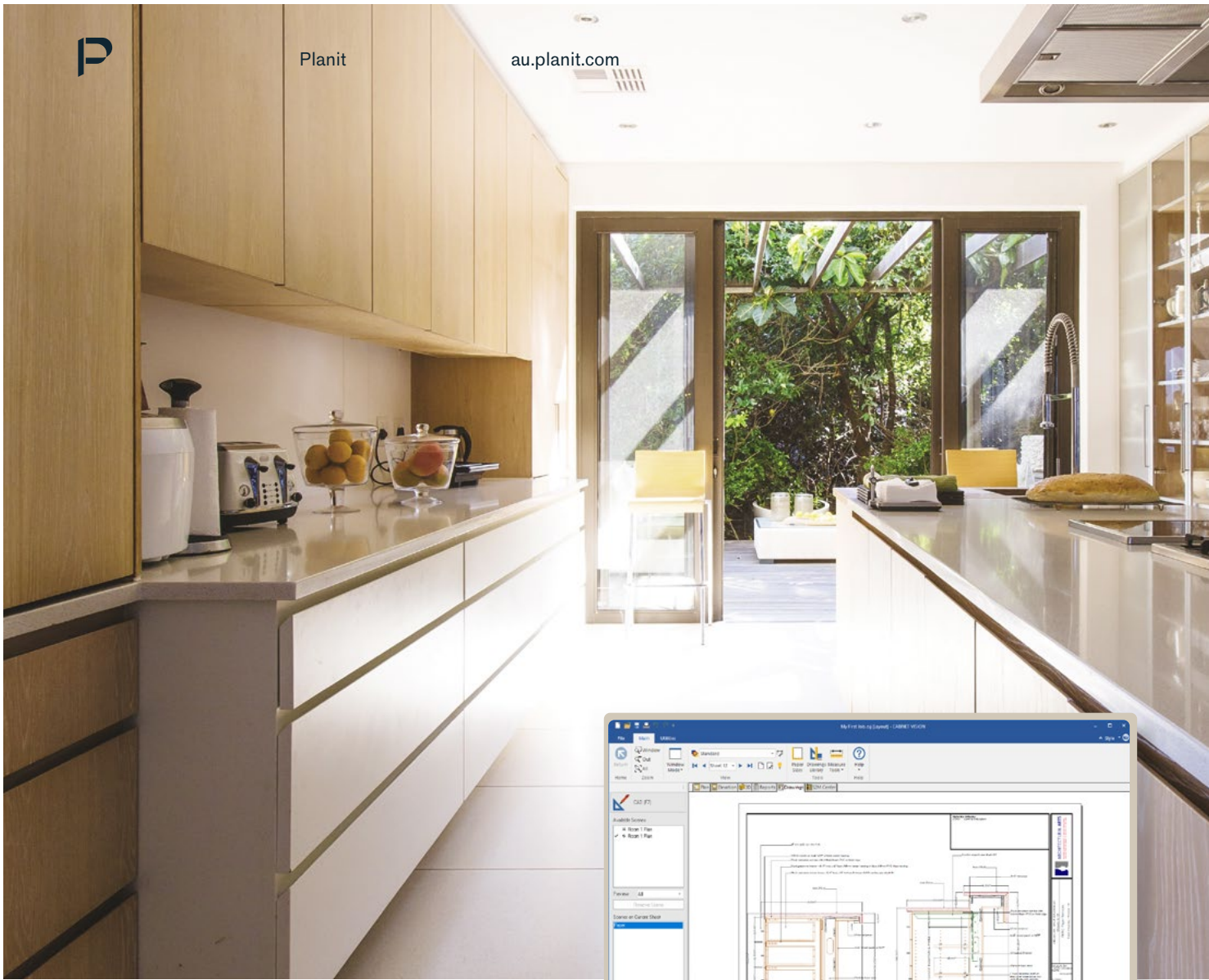
## Assembly Manager for closets

To accommodate for the unique manufacturing methods of the closet/storage industry, Assembly Manager allows you to assign closet specific machining, sizing, placement and rules for components such as shoe sections, closet rods, shoe shelves and much more.

## P Key Features

- Define closet construction methods
- Custom closet catalogue assemblies
- Order entry, floor plan, elevations, 3D and assembly views
- Straight, angled, curved, cathedral, vaulted and peninsula walls
- Import 3D models for materials





# x2D CAD

2D CAD functionality ideal for architectural submittals and shop drawings.

Creating accurately annotated drawings with the x2D CAD multiplier makes it simpler to communicate design intent to architects and contractors. x2D CAD comes with a host of tools and capabilities, including the automatic updating of part information from the live drawing.

## Key Features

- Plan and assembly cross section views
- Custom view layers and dimensions styles
- Save drawing scenes to a separate file
- Live drawing scenes
- User defined drawing library
- Assembly leaders
- Flip, mirror, rotate and trim 2D CAD objects
- Scale and stretch 2D CAD objects
- Offset CAD objects
- CAD saved with assemblies
- Create live data tables

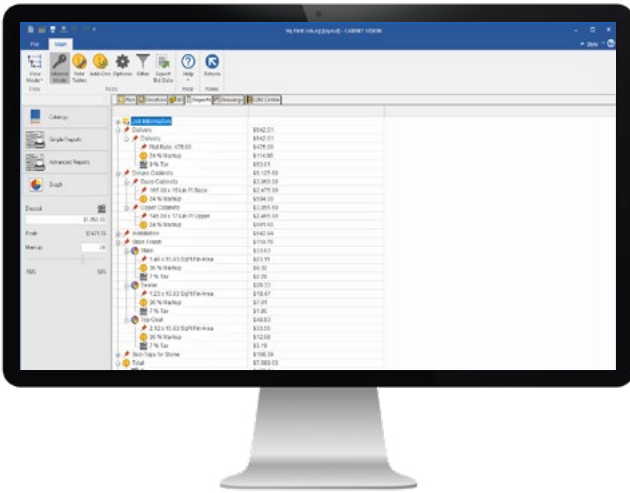
# xBidding

Complete control over bidding and estimation.

The xBidding multiplier is a simple yet powerful tool that accurately generates bid data so that you can put forward bids that are both competitive and profitable. xBidding performs a complex calculation based on the material, labour and other costs of the final engineered product, thereby giving you a clear indication of your room for negotiation on price. The smart bidding system also makes it easy to discuss design changes with customers without having to recalculate bids from scratch.

## +Catalog Editor

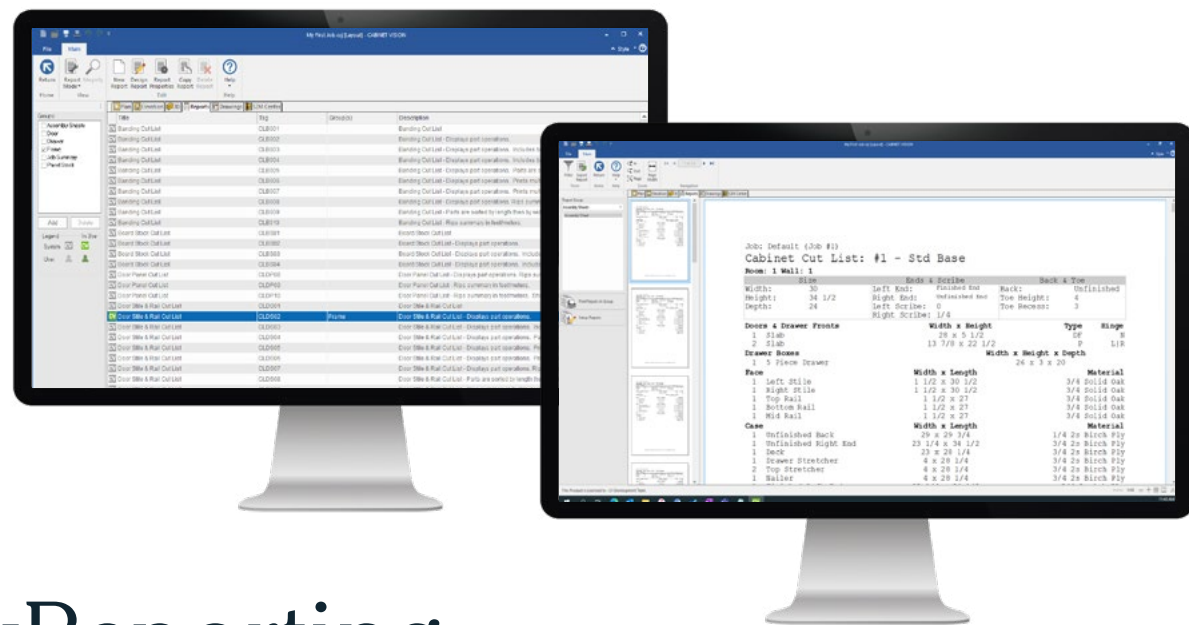
The +Catalog Editor addition allows CABINET VISION users to create their own modular catalogue. Modular catalogues have pre-set options and option up-charges, door styles and door/drawer up-charges that match those included in a typical stock manufacturer's paper catalogue. These catalogues incorporate all customised system standards from CABINET VISION, including materials, material schedules, doors and drawers, profiles, construction methods and parts pricing (if applicable) into a new, distributable catalogue. Distributable (or read only) catalogues protect your catalogue data so that units cannot be modified and saved back into the catalogue after it is distributed to end-users.



## Key Features

- Full job costing
- Custom labour costing
- Labour per part & assembly
- Price by part
- Define part pricing matrices
- Create and assign vendors to materials
- Access to over 150 bid methods
- Breakout bids by room
- Custom reporting engine
- Export bid data for third party software

Full job costing done with ease.



# xReporting

Unlimited reporting capability and a custom report editor.

xReporting gives you access to over 150 predefined reports as well as a custom report editor, making it easy to share clear, concise information with the relevant departments throughout your business. The xReporting multiplier saves time by allowing you to create report

groups containing multiple reports that can be printed with a single click. And because it is integrated with CABINET VISION it automatically updates reports when changes are made to the job design or project specifications.

## P Key Features

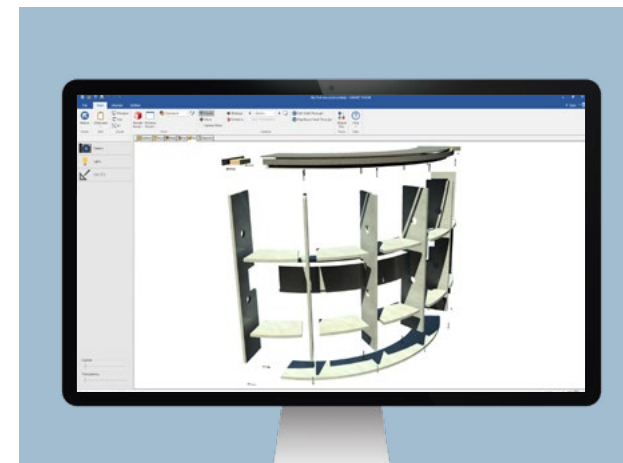
- Over 150 predefined reports
- User defined report groups
- Custom report editor
- Filter report data
- Multiple text file type exports
- User definable assembly sheets
- User definable elevation sheets
- User definable part sheets
- Export report data
- Output part list to third party optimisers

# xShaping

Simplify the shaping of individual parts, including toe notches, cut out around columns, clip and radius corners.

Not all jobs involve right angles. Wall angles, floor levels and customer preferences can pose irregular shaping challenges. xShaping provides the capability to parametrically shape assemblies, parts, and routes

utilising both simple and advanced constraints. xShaping also gives access to the CAM Editor for easily adding operations to parts for machining, such as grommet holes, electrical chases and plumbing cutouts.



## P Key Features

- Parametric assembly shaping (advanced constraints)
- Parametric part shaping (advanced constraints)
- Parametric route shaping (advanced constraints)
- Part level cam editor and reports views
- Split parts
- Add & modify operations on parts
- Library parts
- Replace part w/library parts or DXFs
- Exploded assembly view
- Edit part shape from room level
- Combine multiple assemblies/ toes in elevation view



# xRendering

A photorealistic render that lets customers visualise the final product.

Customers are much more likely to place orders with you if they can visualise how designs will look once they are built and in use in their home or business. The xRendering multiplier gives you an important competitive advantage by creating photorealistic renderings in minutes, using the latest rendering

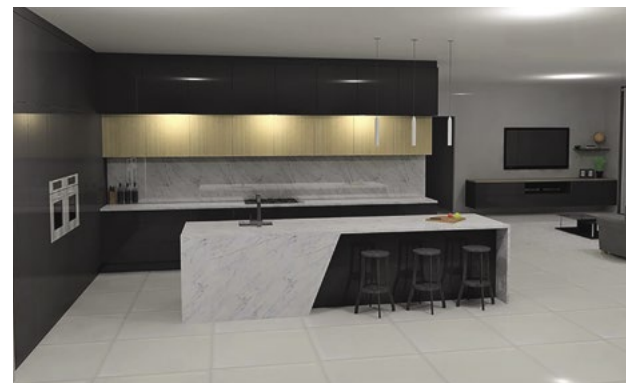
## Key Features

- Realtime rendering
- Advanced rendering
- Architectural photorealistic rendering
- Cartoon rendering
- Hand drawn rendering
- Hatch rendering
- Save renders to image file
- Export COLLADA

technology. You can work with your customers to make changes to designs in seconds, whether to floors, wall coverings, countertops, wood species, stain colors, knobs or other hardware. In this way customers can take ownership of designing their dream layout, helping you to drive higher value sales.

## + Tour

The +Tour addition uses advanced real time rendered walkthroughs to guide customers through representations of how designs will look in practice.



Creating photorealistic renderings in minutes.



# VORTEK Spaces

VORTEK Spaces is much more than a 3D rendering solution. It's a software dedicated to professionals without time & deep 3D expertise to create stunning interactive 3D presentations within minutes.

Our award-winning 3D presentation software for design professionals, sales reps and account managers that are not 3D rendering experts: kitchen designers, interior designers, woodworkers and architects. Design professionals can use their favourite CAD software to design, and then use VORTEK Spaces to present. Your vision, your ideas and projects deserved to be presented live in a stunning way: live 3D walkthroughs, images, videos, 360 videos, virtual reality (VR) and much more!

Create stunning video walkthroughs of your projects in minutes and share them!

VORTEK Spaces is fast... amazingly fast.

Load your SketchUp or CABINET VISION project, add lights, select materials and your environment. You are ready to present within minutes.

## Key Features

- Get results in no time: professional 3D interactive walkthrough within 15 minutes
- Unique ease of use
- Extensive ready-to-use manufacturers material library
- Screenshots, videos, 360 videos, and 3D interactive walkthroughs output formats
- Share your multimedia assets with your customers by email and on social media
- Windows application available on the Microsoft Store
- Continuous updates available: features and content
- Annual or 3-month subscriptions available
- SketchUp, CABINET VISION and Revit\* supported



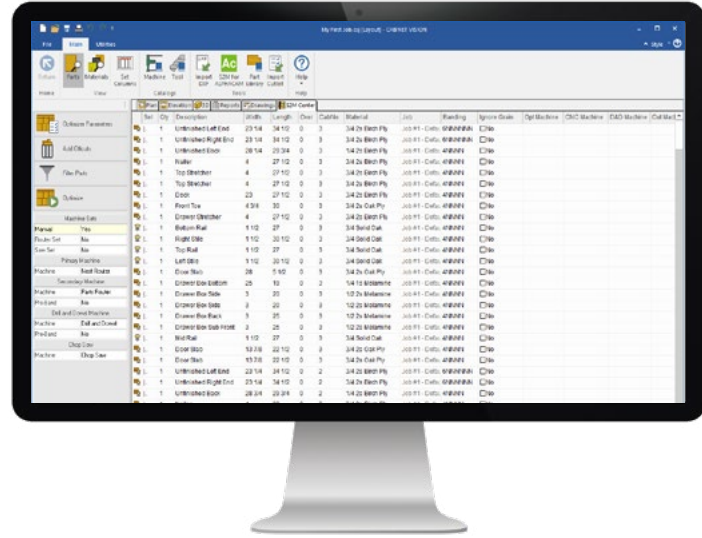
# xMachining

By automatically producing machine ready G-Code for a wide variety of CNC machinery, xMachining takes designs straight from Screen to Machine™.

xMachining is the most flexible, powerful and automated CNC software in the woodworking market. Operating with a full range of machines, including CNC routers, drill and dowel, chop saws, panel saws, haunching machines and edgebanders. xMachining has the capability to intelligently programme machinery by analysing part geometry and automatically creating toolpaths, choosing the right tool, and selecting the speed and feed rates. And if you use multiple types of CNC machinery you can rely on xMachining to automate workflows and send the right part, to the right machine, at the right time.

## P Key Features

- Output to multiple NC and CNC machines simultaneously
- Integrated reporting (including basic part labels)
- Import custom layered DXFs
- Edit part shapes and add operations
- Advanced tool selection logic
- Automatic tooling and toolpath generation
- Basic toolpath simulation
- Pocket waste away



## +Label

Ideal for nested-based manufacturing as well as traditional manual and NC panel saws, the +Label addition enables saw and CNC operators to clearly visualise the panel as labels are printed on-demand and placed on parts. You can easily select parts by simply touching the screen and print easy-to-read graphic labels for each part. In addition, the screen is updated automatically to show exactly which parts and panels have been completed.

Full label design capabilities gives complete control over the data printed on the label. +Label works in conjunction with xMachining to add bar-codes to each part that requires secondary machining (for example, with a point-to-point or CNC drill and dowel machine), enabling an easy flow from one process to the next.

Many newer generation CNC routers and NC saws include their own on-board real-time labeling solutions. Therefore the +Label addition also allows you to design part labels inside xMachining, using all available information, including an image of the part. These labels are then converted to image files which can be printed in real-time using the CNC router's and/or the saw's built-in labeling system.

## +Simulation

+Simulation enables you to preview machine operations graphically on screen to ensure that parts will be machined properly. By simulating prior to machining, it can reduce errors and scrapped parts, saving time, materials, and money.

## +3rd Party CAD Import

The +3rd Party CAD Import addition makes it possible to import cut lists from third party CAD software and layered DXF files to define CNC machining.

## +3rd Party CAM

Interoperability is further strengthened with the +3rd Party CAM addition. This provides the ability to export DXF and other popular formats common to CAM applications for further processing by a third-party CAM solution.

## +Chop Saw

With the +Chop Saw addition it is simple to export data to automated fence systems for chop saws.

## +Drill & Dowel

The +Drill & Dowel addition gives you the capability to export information to drill and dowel machines.

## +Material Handling

The +Material Handling addition provides the capability to export to and synchronise materials with material handling systems.

## +Point to Point

The +Point to Point addition includes either DXF Output to 3rd party CAM applications or the ability to communicate directly with a CNC Machine using Screen to Machine™ technology from Hexagon's Manufacturing Intelligence division.

## +Router

The +Router addition makes it easy to nest full sheets of parts including operations such as line boring, dados and drawer guide holes, creating nests for an entire job in seconds.

CABINET VISION's nesting solutions offer superior small part handling. CABINET VISION's "onion skin and return onion skin" technology for small part handling provides maximum vacuum hold-down while maintaining superior edge finish, as well as machine times up to 50% faster than other comparative nesting solutions.

In addition to block nesting, +Router comes with a geometric nesting solution that optimises the production of rectangular and irregular shaped parts. Parts are rotated into position and shapes are interlocked to maximize material yield. You can even nest parts inside of other parts for maximum yield.

## +Part List Export

The +Part List Export addition makes it possible to export a PNL, CUT, or Custom CUT file to a preferred optimiser. When using the +Router, +3rd Party CAM, or +Point to Point additions these files will include the programme name for part machining that needs to be performed after cutting.

## +Saw

The +Saw addition allows you to maximise material yield and reduce waste. Fully integrated with CABINET VISION it makes it simple to quickly convert cut lists into patterns for import directly to an NC Panel saw or into printed patterns for use by a manual sawyer. With built-in Offcut Management the system will instruct the sawyer which offcuts to deploy from job to job, maximising material utilisation. The Panel Optimizer also includes built-in links to nearly all NC saws on the market.

## +Special

The +Special addition enables exports to specialised woodworking machines such as haunching or French miter machines.





# +Router

## Seamless manufacturing with machining.

Screen-to-Machine Solutions are at the heart of what xMachining allows Planit to provide you a complete software solution, by being able to seamlessly integrate CABINET VISION with your machine. This means you can complete your design, then send it straight to your machine; all in the one program. It's fast, accurate and easy. Selecting one of our Screen-to-Machine Solutions, streamlines your current manufacturing processes and provides you greater control for any project you take on.

xMachining with +Router builds upon your current manufacturing processes, and will increase the automation that takes place in the factory. Maximise your machine investment by utilising the intelligence of the software, to utilise your machines full capabilities. One of the key features of +Router is the Linked Part Outlines, by creating a more efficient tool path, the machine consequently works more efficiently, saving you up to 15% on cycle times at your CNC.

xMachining includes labelling as standard, with other add-on options available to further meet your manufacturing needs.

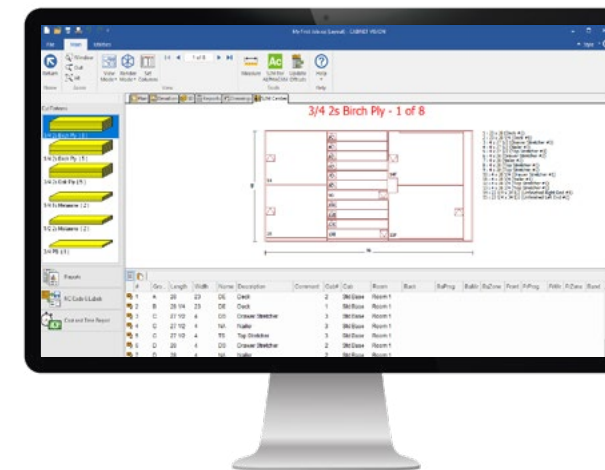
### P Key Features

- Be able to connect CABINET VISION to any of the major CNC's sold in Australia
- Benefit from the ease of having the software generate the CNC code for you
- Bridge Nesting maximises your machine's efficiency
- Part identification through labels
- Have greater control of your machine
- 6th Face Nesting\*

\*Requires +Router

# xOptimizer

xOptimizer maximises panel saw yield.



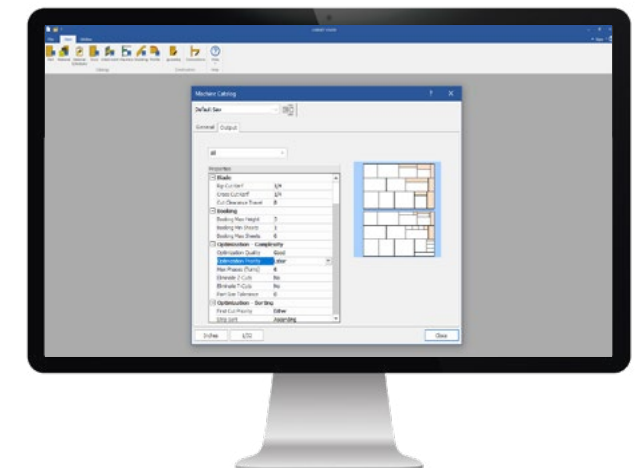
Maximise your material yield & reduce your waste.



The Panel Optimizer multiplier is ideal if you are seeking to maximise material yield and reduce waste. It also increases output by eliminating the need to calculate patterns manually. Fully integrated with CABINET VISION, it allows you to quickly and easily convert cut lists into patterns for import directly to an NC panel saw (with the +Saw addition) or to create printed patterns for a manual sawyer. With built-in Offcut Management, the system will instruct the sawyer which offcuts to use from job to job, maximising the use of material.

### P Key Features

- Pattern diagram print outs
- Offcut manager
- Multiple sheet size definition for a single material
- Automatically use larger sheet sizes for oversized parts
- Cost and time report
- Send optimised sheet to the CABINET VISION drawing pages



### +Saw

CABINET VISION has been outputting to panel saws for nearly 30 years. As a result, +Saw can generate output for nearly every NC saw on the market and we use our expertise to develop links for new saws as they are commercialised.





Expertise, craftsmanship, service.

# The complete solution for the Woodworking industry.

Contact us:

[sales@au.planit.com](mailto:sales@au.planit.com)

1300 855 411

[au.planit.com](http://au.planit.com)



Authorised **Hexagon**  
reseller of:

CABINET VISION





A dedication  
to craft.

[au.planit.com](http://au.planit.com)

---