



# Cat<sup>®</sup> D2

## DOZER

### FEATURES:

The new Cat<sup>®</sup> D2 delivers superior performance and the broadest choice of technology features to help you get the most from your dozer. Nimble and responsive, it has power for dozing and finesse for grading. Fully hydrostatic transmission gives you seamless acceleration, so you can get the job done quickly. The load sensing system automatically optimizes ground speed based on load, for the greatest productivity and fuel efficiency.

### IMPROVED VISIBILITY

- New sloped hood provides better visibility to the work in front of the blade as well as the overall job site. Better visibility can equal less operator fatigue and more confidence in your work.

### GRADE TECHNOLOGY

- Scalable 2D and 3D Cat Grade provide technologies like Slope Assist, Stable Blade, and Slope Indicate for easier and more efficient operation, as well as the flexibility to adapt different technology based on job site demands.

### UP TO 10% IMPROVED FUEL ECONOMY

- The D2 features the lowest fuel consumption in this size class with the same great performance you've come to expect. Up to 20% improvement and no performance sacrifice when ECO mode is active.

### COMFORTABLE WORK SPACE

- The spacious and comfortable cab features an optional heated and ventilated seat, along with heated joystick controls to make the operator comfortable no matter what the conditions are outside. The seat height and armrests can be easily adjusted to the operator's preference.

### BIGGER, BETTER DISPLAY WITH CAMERA

- This new and improved optional 10 in (254 mm) touchscreen, color display is easy to use, with a great view of machine settings, rearview camera and Slope Indicate/Slope Assist screens. The large reversing camera gives the operator better visibility to the job site.

### DURABLE UNDERCARRIAGE

- The D2 is available with either a Sealed and Lubricated Track (SALT) or Abrasion undercarriage to best suit your application. The undercarriage has a longer life resulting in less down time. A one piece mainframe/track roller frame design and the large, double reduction planetary final drive allow the machine to push heavy loads.

## Specifications

### Engine

Engine Model	Cat <sup>®</sup> C3.6	
Net Power @ 2,200 rpm		
SAE J1349	68.8 kW	92 hp
ISO 9249, 80/1269/EEC	68.8 kW	92 hp
Power Train	Hydrostatic	
Displacement	3.6 L	220 in <sup>3</sup>

- Net power is tested per ISO 9249:2007 and SAE J1349:2011 and as advertised is the power available at the flywheel when the engine is equipped with fan, air intake system, exhaust system and alternator.
- All non-road U.S. EPA Tier 4 Final, EU Stage V, Japan 2014 (Tier 4 Final) and Korea Tier 4 Final diesel engines are required to use only Ultra Low Sulfur Diesel (ULSD) fuels containing 15 ppm EPA/10 ppm EU (mg/kg) sulfur or less.

### Weights

Operating Weight	8338 kg	18,382 lb
Operating Weight – LGP	8648 kg	19,066 lb

- Specifications shown are for machine equipped with dozer blade, EROPS cab, back-up alarm, operator, coolant, lubricants and full fuel tank.
- For machine with ripper, add 554 kg (1,222 lb).

### Cab

ROPS	ISO 3471:2008
FOPS	ISO 3449:2005 Level II

### Transmission

Drive Pumps	1	
Track Motors	2	
Relief Valve Settings	48 500 kPa	7,033 psi
Maximum Travel Speed – Forward	9 km/h	5.6 mph
Maximum Travel Speed – Reverse	10 km/h	6.2 mph



# D2 Dozer

## Undercarriage

Number of Rollers (each side)	7	
Number of Shoes (each side) – Sealed and Lubricated Track (SALT) Undercarriage	43	
Number of Shoes (each side) – Abrasion Undercarriage	38	
Shoe Width	460 mm	18 in
Shoe Width – LGP	635 mm	25 in
Length of Track on Ground	2248 mm	89 in
Length of Track on Ground – LGP	2248 mm	89 in
Track Gauge	1550 mm	61 in
Track Gauge – LGP	1725 mm	68 in
Ground Pressure	39.5 kPa	5.7 psi
Ground Pressure – LGP	29.7 kPa	4.3 psi

## Service Refill Capacities

Fuel Tank	195 L	51.5 gal
Crankcase and Filter	10.5 L	2.8 gal
Final Drives, (each side)	10 L	2.6 gal
Final Drives, LGP (each side)	10 L	2.6 gal
Cooling System	19 L	5.0 gal
Transmission/Hydraulic Tank	90 L	23.8 gal
Diesel Exhaust Fluid (DEF) Tank	19 L	4.9 gal

## Hydraulic Controls

Pump Output	65 L/min	17.2 gal/min
Relief Valve Settings	20 600 kPa	2,988 psi

## Ripper

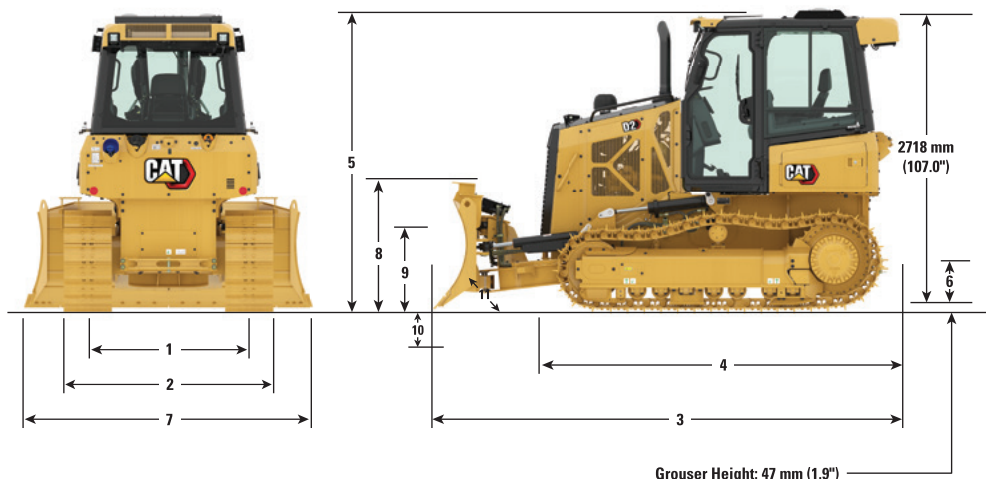
Type	Parallelogram	
Number of Shanks	3	
Maximum Digging Depth	337.5 mm	13.3 in
Maximum Reach at Ground Line	766 mm	30.2 in
Maximum Ground Clearance Under Tip	448 mm	17.6 in
Overall Width	1710 mm	67.3 in
Height	165 mm	6.5 in
Weight	554 kg	1,222 lb

## Winch

Weight	610 kg	1,345 lb
Winch Drive	Hydrostatic	
Control	Hydraulic	
Speed	Variable	
Winch Length	705 mm	27.76 in
Overall Width	741 mm	29.2 in
Drum Diameter	254 mm	10 in
Drum Width	274 mm	10.8 in
Throat Clearance	171.5 mm	6.75 in
Rope Diameter – recommended	16 mm	0.63 in
Rope Diameter – optional	19 mm	0.75 in
Drum Capacity – recommended cable	113 m	371 ft
Drum Capacity – optional cable	78 m	256 ft
Maximum Line Pull – bare drum	18 144 kg	40,000 lb
Maximum Line Pull – full drum	11 340 kg	25,000 lb
Maximum Line Speed – bare drum	40 m/min	131 ft/min
Maximum Line Speed – full drum	63 m/min	207 ft/min

## Air Conditioning System

The air conditioning system on this machine contains the fluorinated greenhouse gas refrigerant R134a (Global Warming Potential = 1430). The system contains 1.8 kg of refrigerant which has a CO<sub>2</sub> equivalent of 2.574 metric tonnes.



## Dimensions\*

	Standard		LGP	
<b>1</b> Track Gauge	1550 mm	61.0 in	1725 mm	67.9 in
<b>2</b> Width of Dozer (standard shoes, no blade)	2010 mm	79.1 in	2360 mm	92.9 in
<b>3</b> Overall Length (with blade)	4281 mm	168.5 in	4272 mm	168.2 in
<b>4</b> Length of Basic Dozer (without blade)	3290 mm	129.5 in	3290 mm	129.5 in
<b>5</b> Dozer Height	2765 mm	108.9 in	2765 mm	108.9 in
<b>6</b> Ground Clearance	332 mm	13 in	332 mm	13 in
With Ripper Attachment (add to Length of Basic Dozer)	1177 mm	46.3 in	1177 mm	46.3 in
<b>BLADE</b>	<b>Standard</b>		<b>LGP</b>	
<b>7</b> Blade Width	2782 mm	109.5 in	3149 mm	124 in
<b>8</b> Blade Height	1010 mm	39.8 in	910 mm	35.8 in
<b>9</b> Blade Lift Height	743 mm	29.3 in	708 mm	27.9 in
<b>10</b> Digging Depth	593 mm	23.3 in	589 mm	23.2 in
<b>11</b> Blade Cutting Edge Angle, Adjustable	52° to 58°		52° to 58°	
Maximum Tilt	387 mm	15.2 in	438 mm	17.2 in
Maximum Angle (either side)	25°		25°	
Blade Width at Maximum Angle	2542 mm	100.1 in	2874 mm	113.1 in
Blade Capacity (SAE)	1.98 m <sup>3</sup>	2.59 yd <sup>3</sup>	1.85 m <sup>3</sup>	2.42 yd <sup>3</sup>

\*Abrasion Undercarriage

# D2 Dozer

## Standard and Optional Equipment

Standard and optional equipment may vary. Consult your Cat dealer for details.

	Standard	Optional		Standard	Optional
<b>POWER TRAIN</b>			<b>ATTACHMENTS</b>		
Air cleaner with precleaner, automatic dust ejection and underhood intake	✓		Rigid drawbar	✓	
Air cleaner with external precleaner		✓	Drawbar, towing		✓
Aluminum bar plate cooling system (radiator, power train)	✓		Front pull device	✓	
Automatic traction control	✓		Machine security system		✓
Cat C3.6 diesel engine	✓		Mounting, winch		✓
Drive, auxiliary	✓		Ripper, parallelogram, includes three shanks and teeth		✓
Dual path, closed loop, hydrostatic transmission	✓		Winch, hydraulic, high performance		✓
Electric fuel pump	✓		Winch, hydraulic, retrieval		✓
Fuel/water separator	✓		<b>OPERATOR ENVIRONMENT</b>		
Installation, winch		✓	Armrests, adjustable	✓	
Turbocharged aftercooled	✓		Cab, with air conditioning		✓
<b>ELECTRICAL</b>			Cab, polycarbonate windows and air conditioning		✓
Alarm, backup	✓		Coat hook	✓	
Alternator, 150 amp, heavy duty	✓		Controls, seat mounted, fore/aft adjustment	✓	
Batteries, heavy duty, maintenance free, 1,000 CCA	✓		Cup holders	✓	
Diagnostic connector	✓		Eco Mode	✓	
Four integrated front halogen lights, two rear halogen	✓		Electronic Monitoring system with gauge:		
Four integrated front LED lights, two rear LED		✓	– Chassis slope indication	✓	
Horn, electric	✓		– Diesel exhaust fluid (DEF)	✓	
Starter, electric, 12 V, heavy duty	✓		– Engine coolant temperature	✓	
<b>UNDERCARRIAGE</b>			– Fuel level	✓	
SALT undercarriage (43 section)	✓		– Hydraulic oil temperature	✓	
Abrasion undercarriage (38 section)		✓	Electronic security system	✓	
Track Pairs			Engine air cleaner service indicator	✓	
– Track, 460 mm (18 in)		✓	Engine RPM and gear display	✓	
– Track, 635 mm (25 in)		✓	Floor mat, rubber, heavy duty	✓	
Carrier rollers	✓		Foot pads, dash	✓	
Guards, front/rear guiding	✓		Hour meter, electronic	✓	
Seven roller track frame	✓		Independent forward/reverse speed settings	✓	
Track adjusters, hydraulic	✓		Mirror, rearview, inside	✓	
Track rollers, lifetime lubricated	✓		Power port, 12 volt	✓	
<b>HYDRAULIC</b>			Radio, AM/FM Bluetooth®		✓
Hydraulic pump and oil	✓		ROPS/FOPS canopy	✓	
Four valve for use with ripper		✓	Seat, air suspended, cloth or vinyl	✓	
Four valve for use with winch		✓	Seat, air suspension, choice of:		
Single lever, three function control	✓		– Vinyl, heated seat with heated controls		✓
Three valve hydraulics	✓		– Cloth, heated seat with heated controls		✓
<b>CAT TECHNOLOGY</b>			– Cloth, heated and ventilated seat with heated controls		✓
Cat Grade with Slope Assist		✓	Seatbelt, hi-vis retractable 76 mm (3")	✓	
Cat Grade with 3D		✓	Seatbelt buckling indicator/reminder	✓	
Compatibility with radios and base stations from Trimble, Topcon, and Leica	✓		Single pedal combining decel and brake functions	✓	
Capability to install 3D grade systems from Trimble, Topcon, and Leica	✓		Sound suppression		✓
Cat Product Link PLE643/PLE743 Cellular	✓		Speed recall	✓	
Cat Product Link PLE683/PLE783 Cellular/Satellite		✓	Storage compartment	✓	
Full-color 10 in (254 mm) touchscreen grade display		✓	Throttle switch, rotary	✓	
Power Pitch		✓	Travel speed limiter, electronic	✓	
Slope Indicate	✓		<b>OTHER</b>		
Stable blade	✓		Heater, engine, coolant 120 V/240 V		✓
			Starting aid, ether		✓

For more complete information on Cat products, dealer services, and industry solutions, visit us on the web at [www.cat.com](http://www.cat.com)

© 2022 Caterpillar  
All rights reserved

Materials and specifications are subject to change without notice. Featured machines in photos may include additional equipment. See your Cat dealer for available options.

CAT, CATERPILLAR, LET'S DO THE WORK, their respective logos, "Caterpillar Corporate Yellow," the "Power Edge" and Cat "Modern Hex" trade dress as well as corporate and product identity used herein, are trademarks of Caterpillar and may not be used without permission.

AEHQ8306-02 (04-2022)  
Replaces AEHQ8306-01  
Build Number: 12A  
(N Am, EU, Aus-NZ, Japan)

