



FE55

Efficiency in tablet production



**FETTE
COMPACTING**
be efficient

Technology

- The FE55 is the first machine of Fette Compacting's new FE-series.
- It combines technical innovations with a unique easy handling concept to set a new benchmark for efficiency in tablet production.



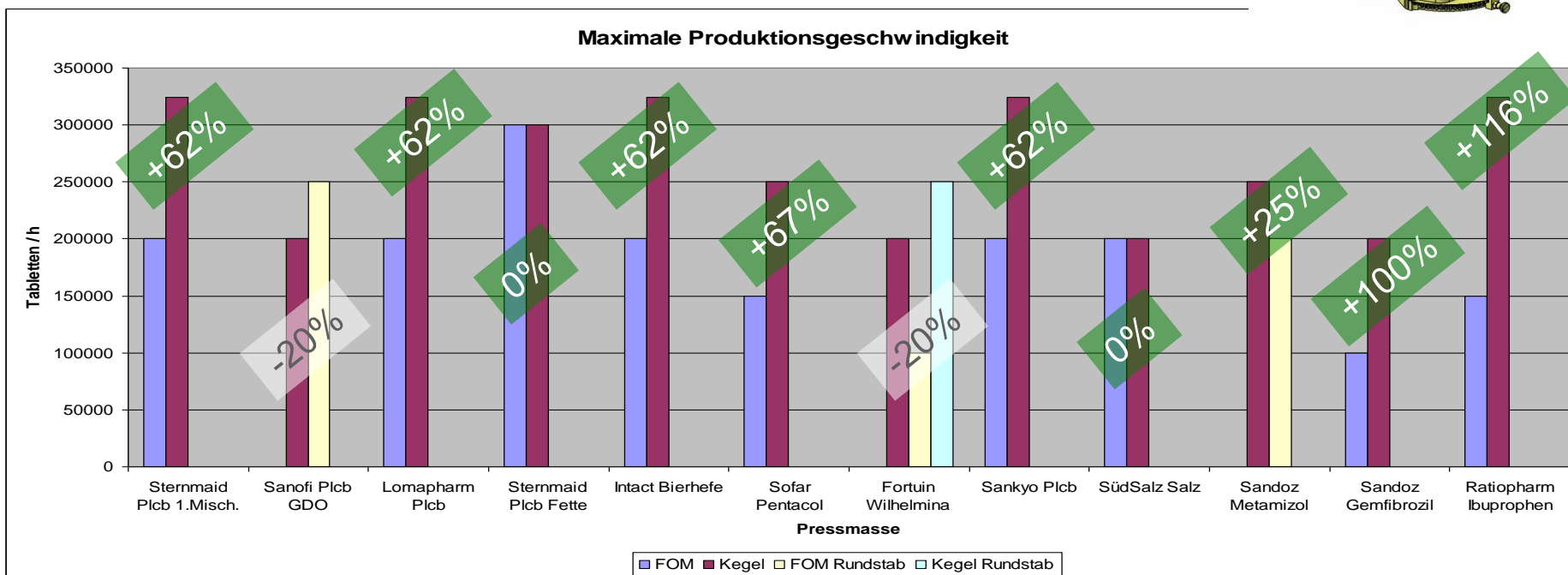
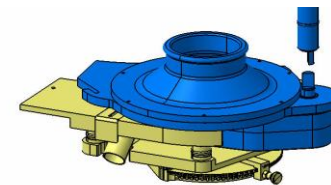
New filling system

- Innovative filling system increases productivity by 100% with most product mixtures
- Easy to clean thanks to small components
- No tools required for assembly or dismantling
- Downward-compatible three-chamber FOM
- Height adjustment in steps of 30 μm via a central slider ensuring absolute repeatability



Theory very well, what does it mean in practice?

- **The innovations:**
- Compatible with New Filling Cone*



- * up to +116% in the first experiments, **+43% average productivity gain.**

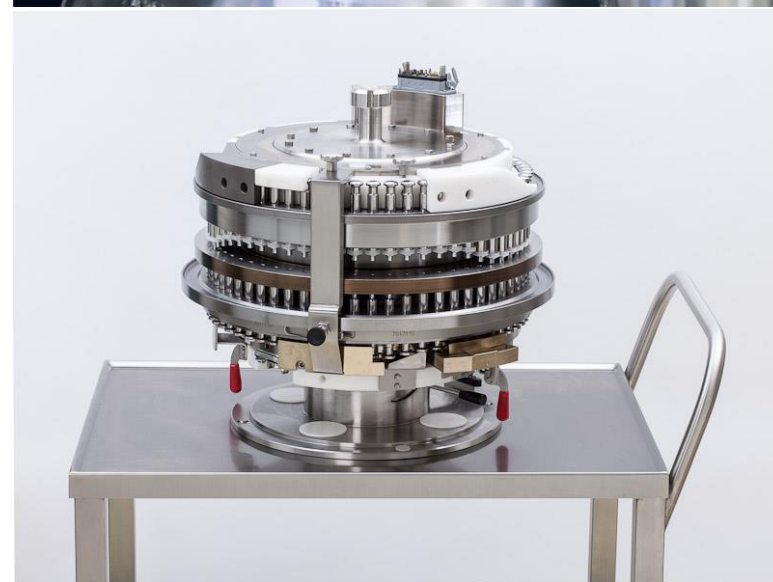
New compression stations

- Maximum flexibility
- Mono tablet production
- Direct compressing using a third compression roller
- 50% longer compression dwell time
- Double-layer tableting with identical compression rollers and filling devices
- Downward-compatible Fill-O-Matic
- Mono, direct compression and double-layer tableting (monitored via a coding ring and recognized by machine controls)



New turret

- Up to 50% higher production output thanks to unique ratio of punch stations to footprint (up to 87 punchstations on 1.6m²)
- New smooth-running pressure rollers for easy handling
- Compression rollers can be driven into parking position for easy turret change
- Easy turret exchange with cams and segments
- Coded tablet scraper
- Turret featuring coding ring for avoiding assembly errors
- One central multi-functional plug for oil, air and power



New innovative tablet discharge

- Easy operation
- Significantly less floorspace thanks to innovative tablet discharge through the column
- 360° access
- Compact unit for swift and fast cleaning
- Dust-proof
- Innovative and safe tablet sorting and sampling for maximum product security
- Compact unit without cables or hoses
- All parts with product contact made of stainless



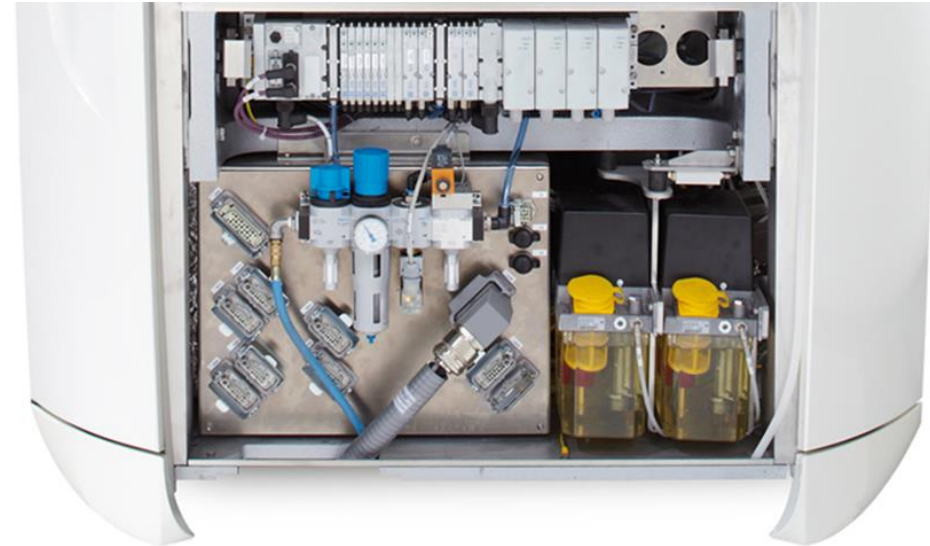
TRI.EASY-Design

- Housing made of FDA-certified high-performance polymer
- Optimal geometric surfaces for easy handling and fast cleaning
- All components with product contact made of stainless steel
- 360° access
- Windows flaps can be opened even when peripheral equipment is connected



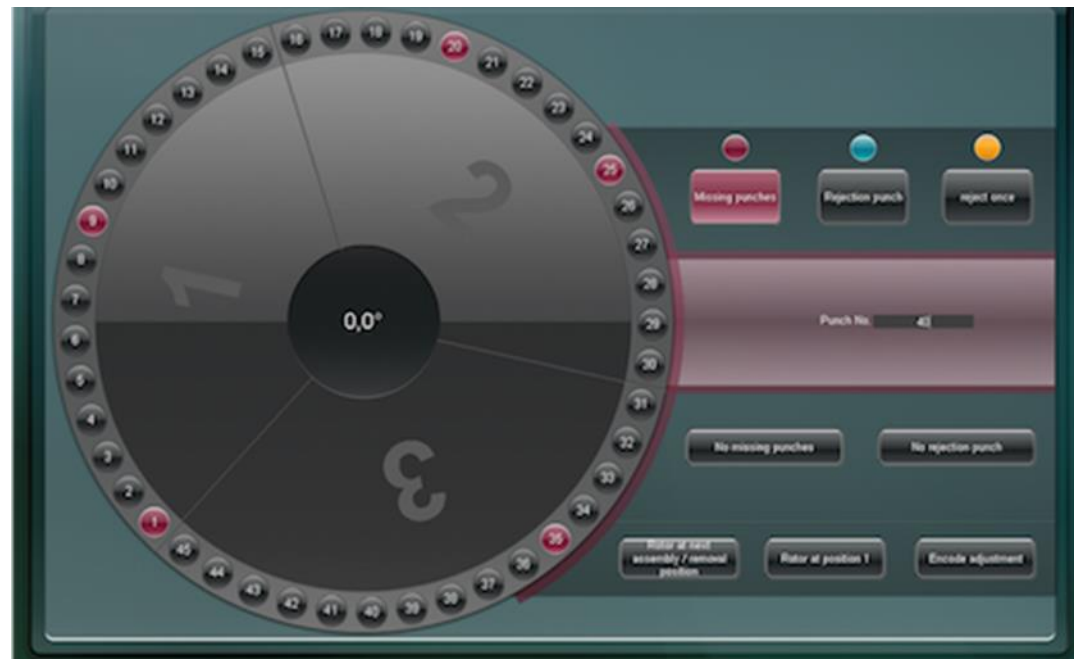
New Torque drive

- High-performance torque direct drive
- Maintenance-free and energy-efficient
- External or internal switch cabinet for maximum flexibility
- Power and control sections are separate
- Power cabinet with innovative cooling concept
- All peripheral equipment and machine connection on a single panel



New HMI

- 19" touch-screen for maximum overview
- Easy operation thanks to full keyboard
- Dust-protected USB connection
- No mechanical drives
- Win7® embedded operating system
- Visual operating software from Fette Compacting
- SQL server database
- Swift access to key functions via 12 pictogram buttons
- All surfaces are easy to clean
- No ventilation slots or openings
- Ergonomic operating height





FE35

The new benchmark in changeover



Technology

- The FE35 offers customers the fastest product change-over of all tablet presses in its class.
- It is the rapid product changeover that makes this new machine so efficient: For example, Fette Compacting estimates that the turret can be removed within a mere 15 minutes.
- All other components of the new machine are also optimized for fast changeover.



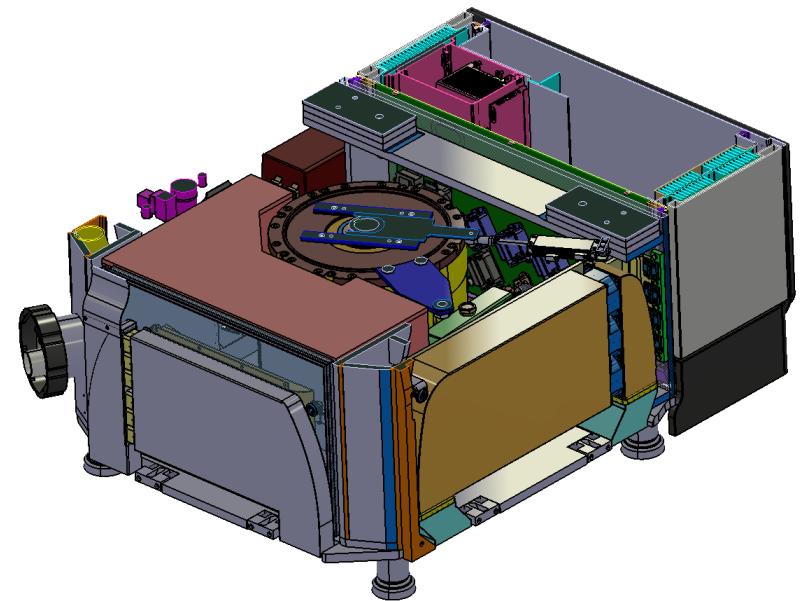
TRI.EASY-Design

- Housing of FDA-certified, high-performance polymere
- Geometrically optimized surfaces for the easiest possible handling and fast cleaning
- All parts that come into contact with the product are stainless steel
- 360 degree accessibility
- Windows flaps can still be opened when peripheral devices are connected



New Torque drive

- Powerful modern direct torque drive for zero-maintenance operation
- Zero-maintenance and energy-efficient
- Switch cabinet optionally external or internal for maximum flexibility
- Power and control sections are separated
- Power cabinet with innovative cooling design
- All connections to peripheral devices and the machine at a single panel



Pmax turret – The heart of tableting

- Production parameters and properties remain unchanged
- Less wear
- Reduced costs
- Genuine alternative to multi-face tools
- 100% quality assurance



Segments and FS12 / FS19 punch

- Significantly shortened changeover times
- Increased process reliability
- Greatly improved cleaning
- Calculable increase in yield
- Sharply reduced product loss



FS12 punch

- More than 40% increase yield
- Application-oriented head shape
- Long compression dwell time
- Punch head diameter 19 mm
- Shaft diameter 12mm

FS19 punch

- 30% longer compression dwell time
- Increased output by faster rotation speed
- Higher compression forces
- Smooth machine running
- Shaft diameter 19mm

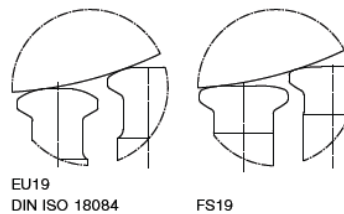
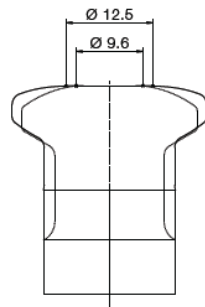
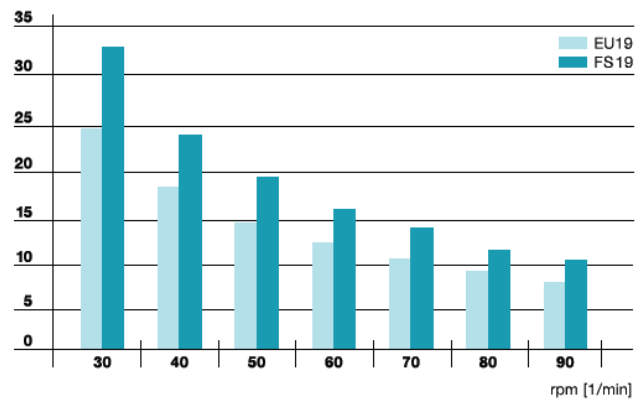


Segments and FS12 / FS19 punch



- + 30 % longer compression dwell time
 - + Increased output by faster rotation speed
 - + Higher compression forces
 - + Smooth machine running
- + Shaft diameter 19 mm

Compression dwell time diagram
[ms]



EU19 = _____
FS 19 = - - - - -