

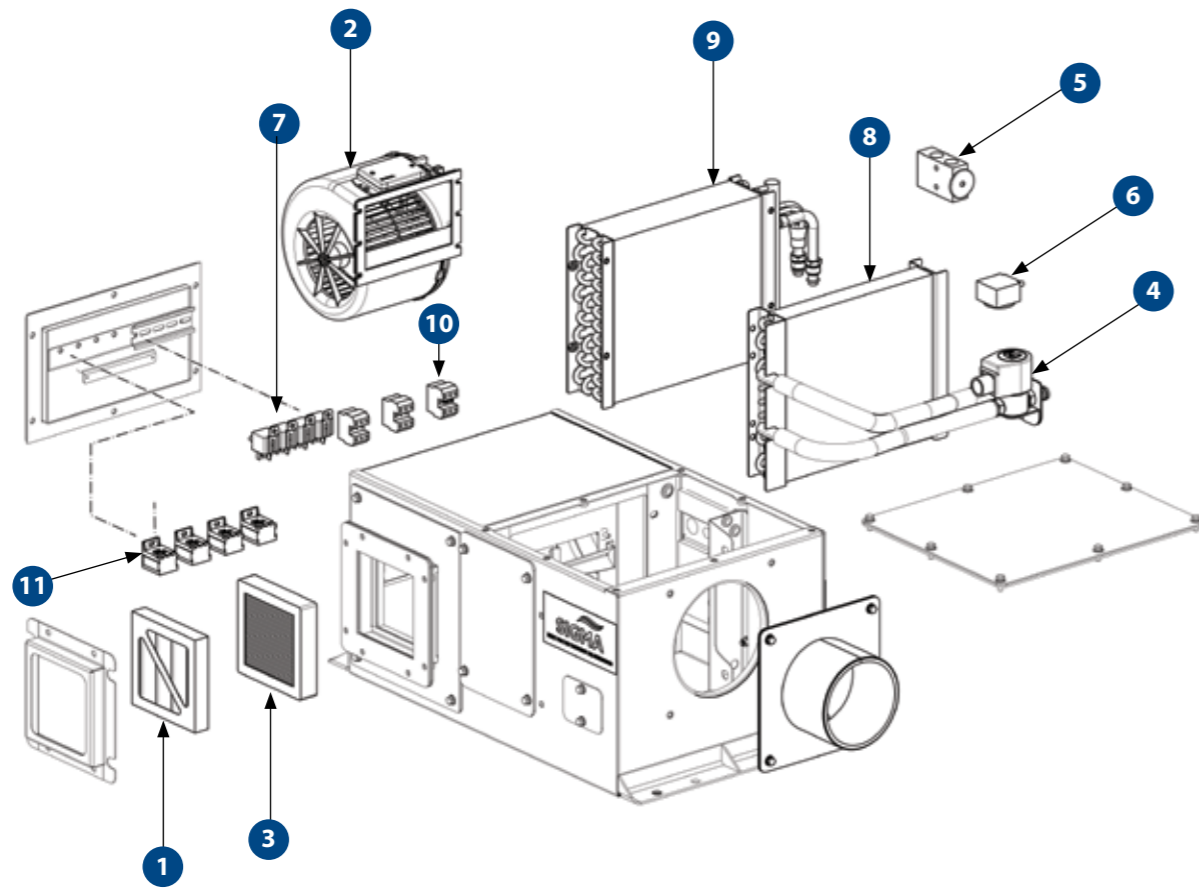


TFF5

FLOOR MOUNTED EVAPORATOR

TFF5BX1
Floor Mounted Evaporator 5kW 24V with Heating (4kW) Solenoid Valve Front Mounted

TFF5BX2
Floor Mounted Evaporator 5kW 24V with Heating (4kW) Solenoid Valve Rear Mounted



SPARE PARTS

PART NO.	DESCRIPTION	QTY
1 AU4601021	FILTER PLEATED 30/30 130MM X 130MM X 22MM	1
2 AU4301014	FAN DECK	1
3 AU4601020	FILTER HEPA 95% EFF 130MM X 130MM X 27MM	1
4 UE057	SOLENOID VALVE 24VDC 1/4BSP WATER	1
5 H0081856	TX VALVE BLK PARKER 2T R134A	1
6 UE016	THERMOSTAT DEICE STUD	1
7 H0076255	RELAY 24V 40A-DIODE PROTECTED	4
8 AU1301002	HEATER COIL 250MM X 228MM X 33MM 2ROW	1
9 AU1201014	EVAPORATOR COIL 250MM X 228MM X 66MM 4ROW	1
10 AU635300	TERMINAL BLOCK SIE 8WA1011-3DH21	3
11 ERR023	RELAY BASE 5 PIN (PANEL MOUNT)	1
H0037067	FILTER - OPTIONAL	1
AU679519	CONTROLLER ELECTRICAL 24VDC DISPLAY	1
AU674003	DIODE P600M 1000V 6A	4
AU635485	END BRACKET KLIPPON EW35 038356	2
UC020	HOSE CLEAR PVC 12 5MM ID X 3MM W	2

SPECIFICATIONS

	METRIC	IMPERIAL
Cooling Capacity	5.0 kW	17060 BTU
Heating Capacity	4.0 kW	13648 BTU
Fan Speeds	3	3
Air Flow	125 l/s	265 CFM
Fresh Air	10 l/s	21 CFM
Power Supply	24V	24V
Current Draw	20 A	20 A
Refrigerant	R134a	R134a
Maximum Ambient Temperature	54°C	129°F
Weight (nominal)	30.0 Kg	66.0 lbs
Technical Manual Reference	SM510-4044	SM510-4044
Dimension (L X W X H)	690mm X 441mm X 295mm	27.2in X 17.4in X 11.6 in

MAINTENANCE

MONTHLY / 400 HOURS	
AU4601021	FILTER PLEATED 30/30 130 X 130 X 22MM
H0037067	FILTER - OPTIONAL
ANNUAL / 4,800 HOURS	
AU4301014	FAN DECK
AU4601020	FILTER HEPA 95% EFF 130MM X 130MM X 27MM
3 YEARS / 14,400 HOURS	
UE057	SOLENOID VALVE 24VDC 1/4BSP WATER
H0081856	TX VALVE BLK PARKER 2T R134A
UE016	THERMOSTAT DEICE STUD
H0076255	RELAY 24V 40A-DIODE PROTECTED
AU679519	CONTROLLER ELECTRICAL 24VDC DISPLAY

Please contact SIGMA for more information including details on an overhaul scope and interval. Maintenance periods and scope are dependent on application and site conditions, and are to be used as a guide.

COMPANION ITEMS

PART NO.	DESCRIPTION
TCW5BX1	Electric Condenser
TCW5BX2	Electric Condenser
EB9P4X	Pressuriser
HDC150	Hydraulic Compressor
AU2961001	Electric Compressor
AU270311	Engine Driven Compressor
AU270312	Engine Driven Compressor
H0081855	Receiver Drier
KNHV90043	TX Valve Fitting Kit
KNHV90044	R/A Box Duct Kit
AU531422	Receiver Drier
H0023631	Return Air Box - 6
AS4044301	Return Air Duct - 5

- DRAGLINE & SHOVEL
- DRILL
- EXCAVATOR
- DOZER
- TRUCK
- WHEEL LOADER
- CONSTRUCTION
- UNDERGROUND EQUIPMENT
- INDUSTRIAL
- SMELTERS
- RAIL SPECIAL VEHICLES