



EVOLVE^X
by INMODE

Tite
Tone
Transform



NON-INVASIVE, HANDS-FREE FAT REDUCTION WITH MUSCLE STRENGTHENING AND TONING TRANSFORMATION



EvolveX is the only all-in-one system equipped with three clinically proven technologies, taking it to the next level.

- » **Tite (Bipolar RF)**
- » **Tone (Electrical Muscle Stimulation - EMS); and**
- » **Transform (Bipolar RF + EMS)**

Procedures can be combined in the same session to deliver synergistic layering treatments to produce consistent results that destroys fat, tightens the skin and at the same time, tone and strengthen muscles all in one platform.

The versatility of EvolveX multi-modalities allows for customisable and repeatable combination treatment plan's to meet patient demand in an ever growing body sculpting trend.

Ensure your practice maximises this hands-free body transformation market simply by offering EvolveX treatments for:

- » High ROI
- » Eliminates the need for multiple standalone devices
- » Hands-free capability to maximise operator time
- » Evolve's treatment screen enables physicians to visually monitor the thermal effect of each applicator at any point during the procedure
- » Can be used on all skin types.

EVOLVE TITE

HANDS-FREE SKIN REMODELLING

Evolve Tite deploys bipolar radiofrequency (RF) energy to the Fibroseptal Network (FSN) to remodel skin and improve its appearance. The 8 hands-free applicators deliver uniform and volumetric bulk heating to the dermal and subdermal layer for circumferential reduction and tissue remodelling.

Smart RF thermistors on each applicator are programmed to maintain therapeutic skin contraction temperatures stimulating neocollagenesis while detecting temperature fluctuations and adjusting accordingly to deliver consistent bulk heating.



Before

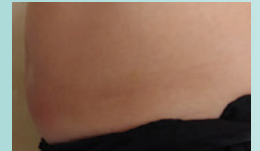


After

DR D. KIBA



Before



After

DR H. ROBERTS

EVOLVE TONE

HANDS-FREE MUSCLE TONING

Evolve Tone is a non-invasive muscle strengthening technology that emits low frequency electrical pulses (electrical muscle stimulation or EMS) to induce involuntary muscle contractions. EMS optimises cellular metabolism and the regeneration of muscle fibres resulting in a more toned appearance.

Patients rest comfortably while Tone targets specific muscle groups to increase muscle strength and refine the look of muscles without downtime.

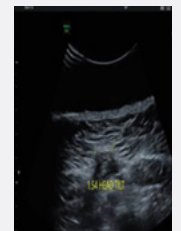
Tone's 4 hands-free applicators allow multiple body areas to be treated simultaneously, so your practice can deliver customised patient treatments. Provide your patients with the ultimate in tailored body treatments.



Baseline



3 MFU



6 MFU

EVOLVE TRANSFORM

HANDS-FREE TOTAL BODY TISSUE, FAT REDUCTION AND MUSCLE TRANSFORMATION

Evolve Transform provides two procedures in one visit. Bipolar radiofrequency energy (RF) for deep heating of dermal and fat tissue, plus electrical muscle stimulation (EMS) alternate to deliver a synergistic layering treatment that produces consistent transformative results.

Transform's 6 hands-free applicators distribute RF energy heat to the fibroseptal network and fat tissue, while EMS induces forced muscle contractions that are not achievable during workouts.

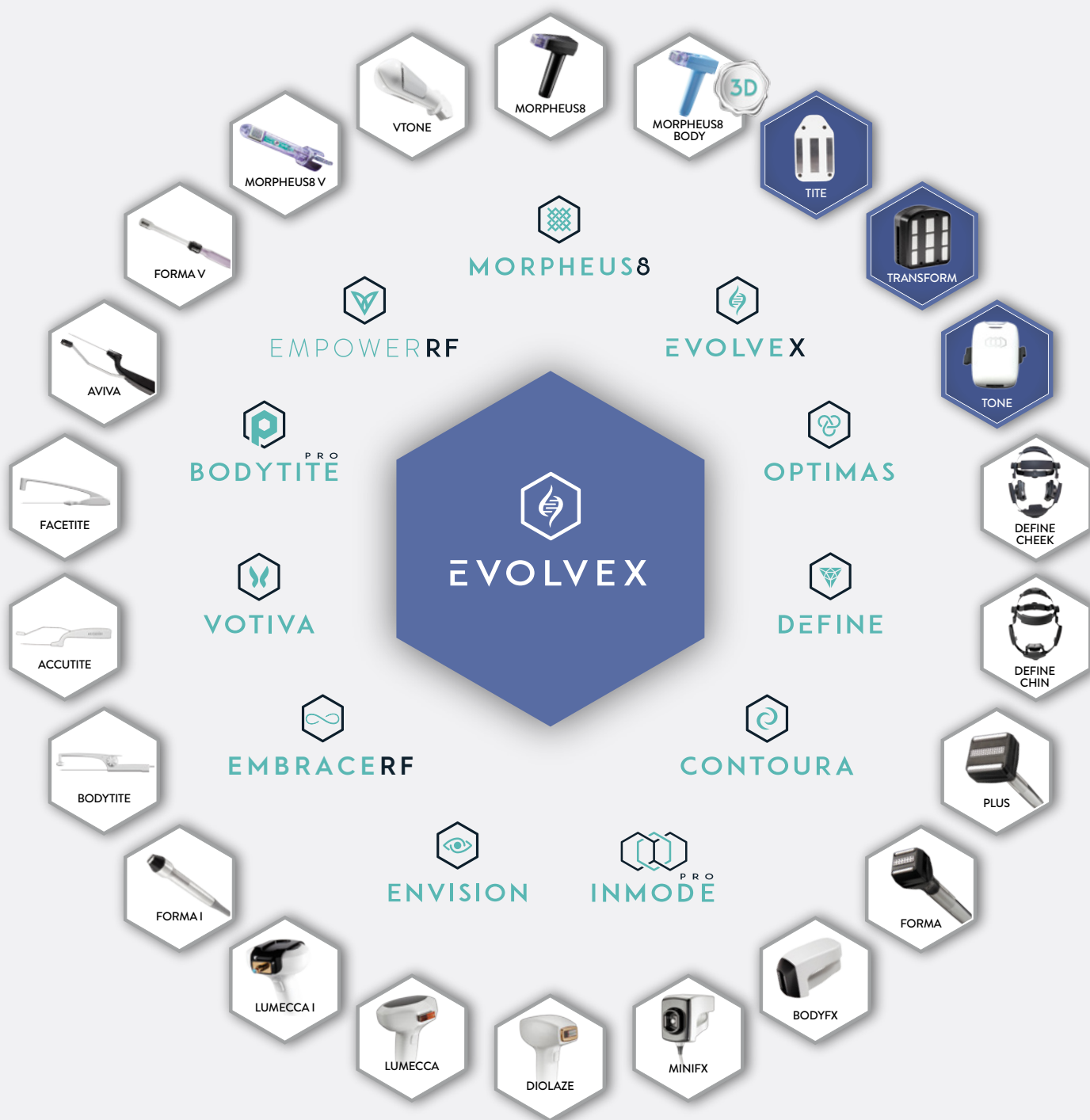


Before



After

DR J. STUBBS



INMODE

[in](#) InMode Australia
 [f](#) InMode_Australia
 [@](#) InModeAustralia
 [☎](#) 盈美特 InMode Australia
 [小红书](#) 458006879

INFO@INMODE.COM.AU | INMODE.COM.AU | +61 (2) 7209 5678