



TEREX

TL Series



TEREX®
Utilities



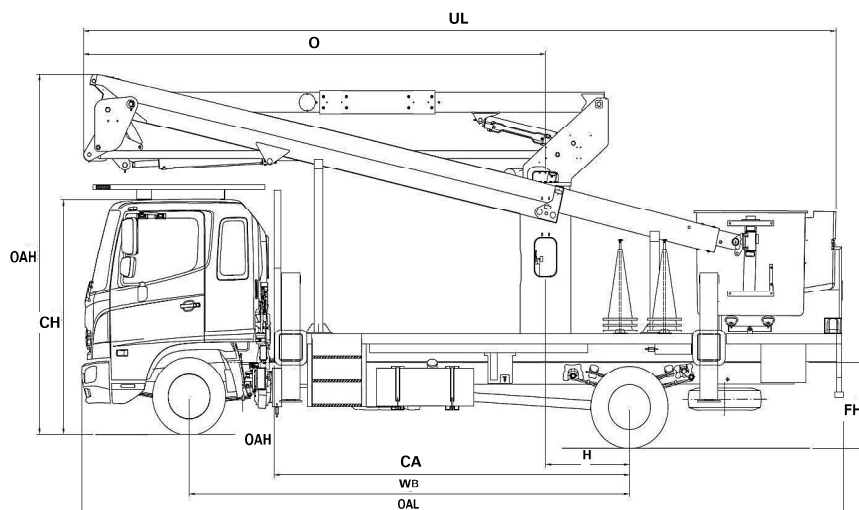


TEREX®

TL SERIES Hi-Ranger Telescopic Material Handling Aerial Device

AERIAL DEVICES

Terex® Hi-Ranger Aerial Devices are known throughout the industry. They come with a long history featuring quality and innovative design.



DIMENSIONS VARY BY TRUCK CHASSIS MODEL

Measurements	TL37		TL41		TL45		TL50		TL55		TL60	
	TL37P	TL37M	TL41P	TL41M	TL45P	TL45M	TL50P	TL50M	TL55P	TL55M	TL60P	TL60M
Typical Frame Height (FH)	0.81 m (32 in.)		0.81 m (32 in.)		1.01 m (40 in.)		1.01 m (40 in.)		1.01 m (40 in.)		1.01 m (40 in.)	
Typical Cab Height (CH)	2.64 m (104 in.)		2.64 m (104 in.)		2.64 m (104 in.)		2.64 m (104 in.)		2.64 m (104 in.)		2.64 m (104 in.)	
Offset (O)	1.84 m (72.5 in.)		2.14 m (84.5 in.)		2.91 m (114.6 in.)		2.91 m (114.6 in.)		4.08 m (161 in.)		5.08 m (200 in.)	
Overall Height (OAH)	3.2 m (10' 7")		3.2 m (10' 7")		3.4 m (11' 3")		3.4 m (11' 3")		3.4 m (11' 3")		3.4 m (11' 3")	
Overall Length (OAL)	7.0 m (23' 1")	7.1 m (23' 5")	7.2 m (23' 8")	7.1 m (23' 4")	6.2 m (20' 5")	6.3 m (20' 9")	7.7 m (25' 4")	7.6 m (24' 10")	8.1 m (26' 5")	7.6 m (25' 1")	8.3 m (27' 3")	8.2 m (26' 9")
Unit Length (UL)	5.4 m (17' 9")		5.8 m (19' 0")		5.8 m (19' 0")		7.3 m (23' 10")		8.1 m (25' 6")	7.6 m (25' 0")	8.3 m (27' 3")	8.2 m (26' 9")
Center of Rotation (H)	1.59 m (62.5 in.)		1.59 m (62.5 in.)		1.59 m (62.5 in.)		2.08 m (82.25 in.)		1.42 m (56 in.)		0.94 m (37 in.)	
Cab to Axle (CA)	2.13 m (84 in.)		2.13 m (84 in.)		2.13 m (84 in.)		2.59 m (102 in.)		3.04 m (120 in.)		3.04 m (120 in.)	
Wheel Base (WB)	4.01 m (158 in.)		4.01 m (158 in.)		4.01 m (158 in.)		4.47 m (176 in.)		4.75 m (187 in.)		4.75 m (187 in.)	
Minimum Chassis Requirement (Subject to Final Configuration)	10,400kg (22,928 lb.)		10,400 kg (22,928 lb.)		14,000 kg (30,865 lb.)		14,000 kg (30,865 lb.)		14,000 kg (30,865 lb.)		14,000 kg (30,865 lb.)	



TEREX®

500 Oakwood Drive
PO BOX 1150
Watertown, SD 57201-6150
USA

Phone: (605) 882-4000
Facsimile: (605) 882-1842
www.terex.com/utilities
E-mail: utilities.info@terex.com

Distributed By:



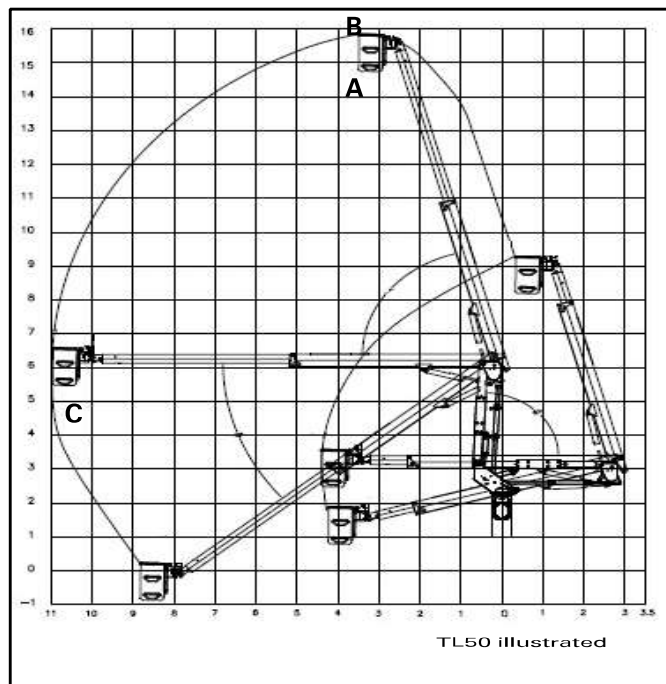
13 Wheeler Crescent
Currumbin Qld 4223
07 55984322
info@liftindustries.com.au
www.liftindustries.com.au

TL SERIES

Hi-Ranger Telescopic Material Handling Aerial Device

STANDARD EQUIPMENT

- End Mount 610mm x 1220mm x 1070mm (24 x 48 x 42") Two-Person Platform
- Platform Capacity of up to 272.2 kg (600 lbs.)
- Control-Plus 4-Function Single Stick Control at Platform
- Safety Harness with Attached Lanyard
- Continuous Unrestricted Worm Gear Rotation
- Insulation Rating 66 kV
- Rectangular, Bi-Axial Epoxy Resin, Filament Wound Fiberglass Booms
- Individual Lever Lower Controls
- Hydraulic Platform Leveling System
- 180° Hydraulic Platform Rotator
- Hydraulic Tool Outlets at platform
- Auxiliary Power Let Down System
- Boom/Boom Stow Interlock
- Boom Overstow Protection
- Liners With Steps
- Steel Main Boom
- Fiberglass Second Section Boom
- Fiberglass Lift Boom Insert
- Full Pressure, Open Center Hydraulic System
- Boom Interlock
- Engine Start/Stop
- Automatic Boom Latch
- Outrigger Non-Stowed Light
- Auxiliary Power: *Allows the operation of any function for a period of time*



CAPACITIES & DIMENSIONAL DATA

	TL37	TL41	TL45	TL50	TL55	TL60
Bottom of Platform Height (A)	11.6m (38.0ft.)	12.8m (42.0ft.)	13.6m (44.8ft.)	15.1m (49.5ft.)	16.8m (55.1ft.)	18.3m (60.1ft.)
Working Height (B)	13.6m (44.0ft.)	14.8m (48.0ft.)	15.6m (50.8ft.)	17.1m (55.5ft.)	18.8m (61.1ft.)	20.3m (66.1ft.)
Horizontal Reach at 87°(C)	8.7m (28.6ft.)	9.5m (31.1ft.)	9.5m (31.1ft.)	11.0m (36.0ft.)	N/A	N/A
Horizontal Reach at 82°	8.6 m (28.3 ft.)	9.4 m (30.8 ft.)	9.3 m (30.4 ft.)	10.7 m (35.1 ft.)	N/A	N/A
Horizontal Reach at 93°	9.0 m (29.6 ft.)	9.8 m (32.2 ft.)	9.9 m (32.2 ft.)	11.2 m (37.0 ft.)	11.7 m (38.3 ft.)	12.2 m (40.1 ft.)
Lower Boom Articulation	0 to 87°	0 to 87°	0 to 87°	0 to 87°	0 to 93°	0 to 93°
Upper Boom Travel	-40 to 76°	-40 to 76°	-40 to 76°	-40 to 76°	-35 to 85°	-35 to 85°
Upper Boom Extension	2.54 m (100in.)	2.95 m (116in.)	2.95 m (116in.)	3.68 m (145in.)	3.55 m (140in.)	3.55 m (140in.)
Platform Capacity	272.2kg (600lbs.)	272.2kg (600lbs.)	272.2kg (600lbs.)	272.2kg (600lbs.)	272.2kg (600lbs.)	272.2kg (600lbs.)

The above TL37-TL50 data is based on a 100 cm" frame height and 147 cm" pedestal.

OPTIONAL EQUIPMENT

- Material Handler Options
 - Various Jib Extension Systems -Hydraulic Articulating Jib/Winch,
 - Side Mt 680 kg Manual or Hyd Extension / Articulation 453 kg
- Various Side and End Mount Platforms
- Various Types of Outriggers
- Hydraulic Lifts: 3.3m. Transverse or In-line
- 132 kV Insulation available on TL50 and TL60
- Single Wire / 46 Kv Insulated Single Line Lifter/Multi-Phase Attachments
- Hybrid Enable
- HyPower™ Hybrid System by Terex®

Effective Date: February 2015. Product specifications and prices are subject to change without notice or obligation. The photographs and/or drawings in this document are for illustrative purposes only. Refer to the appropriate Operator's Manual for instructions on the proper use of this equipment. Failure to follow the appropriate Operator's Manual when using our equipment or to otherwise act irresponsibly may result in serious injury or death. The only warranty applicable to our equipment is the standard written warranty applicable to the particular product and sale and Terex makes no other warranty, express or implied. Products and services listed may be trademarks, service marks or trade-names of Terex Corporation and/or its subsidiaries in the USA and other countries. All rights are reserved. Terex® is a registered trademark of Terex Corporation in the USA and many other countries. Copyright 2015 Terex Corporation.