

MX9

Superior Wireless Color Doppler Ultrasound Scanner MX9

BEINIV
TECHNOLOGY



ACCURATE

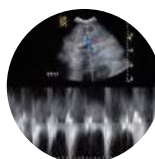
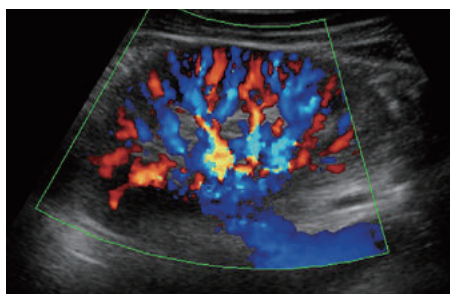
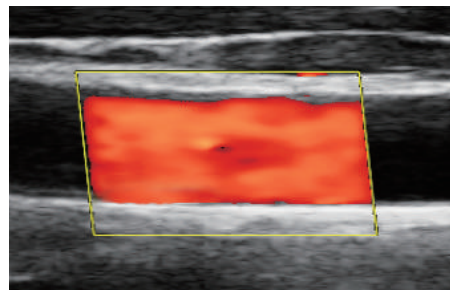
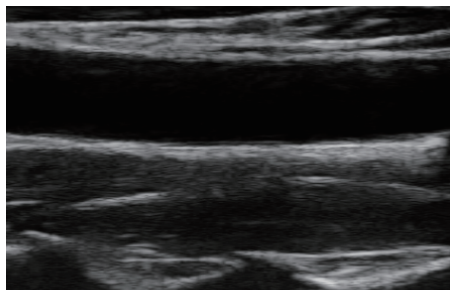
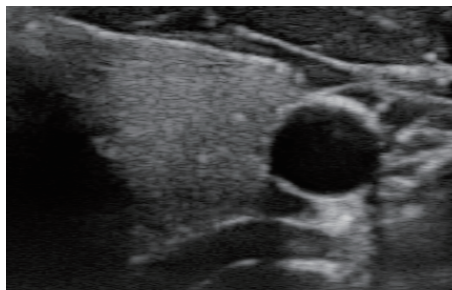


EASY



FAST





4.High-channel HD imaging:up to 198 elements,
receiving on 32/64 channels,26 frames per seconds

Product configuration

Standard Configuration:

3-year warranty

Wireless ultrasound probe

Insert in the probe

Wireless charger

B-mode

M-mode

Color Doppler

Pulsed-wave Doppler

Free DICOM

Medica-grade AL-Mg alloy design



L7 HD - Linear

Central Freq: 7.5MHz, Freq. Range: 6.0-11.0MHz, L40. Max Depth: 12 cm
Application: Orthopedic, Vascular, Lung, Breast, MSK, Nerve, Ocular, Small Parts, Anesthesia, Animals



C2 HD convex probe

Central Freq: 3.5MHz, Freq. Range: 2.0-5.0MHz, R60
Application: Abdomen, Obstetrics, Gynecology, Urology, Lung





Splash-resistant design for reliable cleaning and hospital grade disinfectants;

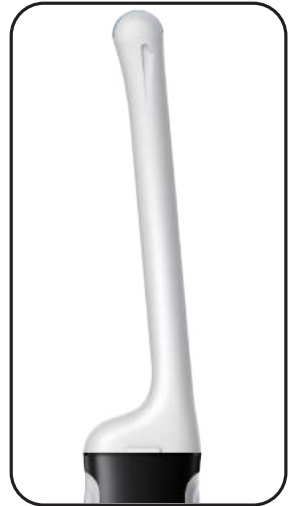
Huge battery provides more than enough power to last for over 4 hours;

300g, ultra-light and thin, agile mobility;

Modular, maintenance-free, future-proof platform,

M-mode, B-mode, Color Doppler, Power Doppler, Pulsed Wave Doppler;

iBTech+ platform, trustworthy imaging at any mobile clinical environment; Ibcear :Smooth Uniform Tissues; Synthetic-focus Beamforming; Probe S-crystal technology; Cutting-edge processor and new 5G, Wifi-6 for seamless connection performance;



BMV Technology Co., Ltd.

Global Enabler for Pets Telemedicine, Reproduction Biotechnologies Imaging

Shenzhen Qianhai headquarters

Add: 4/F, Yinjin Building, Block 71, Baoan Centre District, Shenzhen, China

Tel: +86 75526564580

W: www.bmv.cc www.bmv-vet.com

Hong Kong Branch

Address: 5 / F, Lianwei Commercial Building, 283 Queen's Road Central, Hong Kong

Tel: (00852) 28510669

European Sales Department

Add.: Branimirova 68, Zagreb, CROATIA

Tel.: (385)318590556

Email: export03@bmvc.cc