



High Performance Cable Glands & Cable Gland Accessories



CABLE GLANDS - METAL



Intrinsically Safe Brass Cable Gland - Ext. Thread

Explosion & water resistant and fitted with an o-ring.

Body Material: Nickel Plated Brass
 Insert: Lamellar Polyamide PA6
 Seal: Neoprene
 O-Ring: Nitrile Rubber (NBR)
 Temp: -20°C to 80°C
 Thread: M12 - M63 (Electrical)
 Certification: ATEX, IP68



Brass Cable Gland

Water resistant and fitted with a nitrile rubber (NBR) o-ring and a lamellar polyamide insert.

Body Material: Nickel Plated Brass
 Insert: Lamellar Polyamide PA6
 Seal: Neoprene
 O-Ring: Nitrile Rubber (NBR)
 Temp: -20°C to 100°C
 Thread: M12 - M63
 Certification: IP68, UL



Stainless Steel Cable Gland

Stainless steel cable glands for use in highly corrosive and demanding environments.

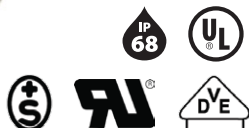
Body Material: 316 Stainless Steel
 Insert: Lamellar Polyamide PA6
 Seal: Neoprene
 O-Ring: Nitrile Rubber (NBR)
 Temp: -20°C to 100°C
 Thread: M12 - M63
 Certification: IP68, UL



Brass EMC Cable Gland with Extended Thread

Suits braided EMC cables. With integrated anchorage & protection against twisting.

Body Material: Nickel Plated Brass
 Insert: Lamellar Polyamide PA6
 Seal: Neoprene
 O-Ring: Nitrile Rubber (NBR)
 Temp: -20°C to 100°C
 Thread: M12 - M63
 Certification: IP68, UL



Brass EMC Cable Gland with SS Contact Spring

Easy connection of cable shield with gland body via contact spring. Integrated anchorage & twist protection.

Body Material: Nickel Plated Brass, Knurled
 Insert: Lamellar Polyamide PA6
 Seal: Neoprene
 O-Ring: Neoprene
 Contact Spring: Stainless Steel
 Temp: -20°C to 100°C
 Thread: M16 - M40
 Certification: IP68, UL



Flange Nut Brass Cable Gland

Hexagonal flange nut cable gland.

Body Material: Nickel Plated Brass
 Insert: Lamellar Polyamide PA6
 Seal: Neoprene
 Temp: -30°C to 100°C
 Thread: M12 - M63
 Certification: IP55

CABLE GLANDS - POLYAMIDE



Intrinsically Safe Polyamide Cable Gland

ATEX approved for potentially explosive areas. Wide sealing and clamping range.

Body Material: Polyamide PA6
Seal: Silicone
Dust Guard: Polyethylene PE-LD
Thread: M12 - M63
Temp: -30°C to 70°C
Certification: ATEX, IP66, UL



Polyamide Cable Gland

Excellent sealing with integrated anchorage. Available in RAL 7001 grey polyamide.

Body Material: Polyamide PA6
Seal: Neoprene
Insert: Lamellar Polyamide PA6
Thread: M12 - M63
Temp: -20°C to 100°C
Certification: IP68, UL, VDE



Polyamide Blind Mount Cable Gland

Can be easily installed from one side without special tools. Integrated anchorage. No inner thread required.

Body Material: Polyamide PA6
Seal: Neoprene
Mounting Nut: Polyamide PA6 GF30
Thread: M12 - M63
Temp.: -20°C to 100°C
Certification: IP68



Polyamide Cable Gland

Excellent sealing and anchoring. Available in RAL 7035 grey.

Body Material: Polyamide PA6
Seal: Neoprene
Thread: M12 - M63
Temp.: -20°C to 100°C
Certification: IP68, VDE



Polyamide Cable Gland with Extended Thread

Excellent sealing and anchoring.

Body Material: Polyamide PA6
Seal: Neoprene
Insert: Lamellar Polyamide PA6
Thread: M12 - M63
Temp: -20°C to 100°C
Certification: IP68, UL, VDE



Multicable Polyamide Cable Gland

Please indicate desired insert when ordering - choose from 1 - 12 holes.

Body Material: Polycarbonate PC
Insert: TPE
Thread: M16 - M50
Temp: -20°C to 100°C
Certification: IP65, IP68 (if hole diameter = wire diameter)

CABLE GLAND ACCESSORIES - ADAPTORS



Polyamide PG to Metric Adaptor

PG external thread to metric internal in fiberglass reinforced polyamide. Light grey RAL 7035.

Material: Polyamide PA6 GF30
Thread Ext.: PG7 - PG29
Thread Int.: M12 - M40
Temp: -30°C to 100°C



Polyamide Metric to PG Adaptor

Metric external thread to PG internal in fiberglass reinforced polyamide. Light grey RAL 7035.

Material: Polyamide PA6 GF30
Thread Ext.: M12 - M63
Thread Int.: PG9 - PG48
Temp: -30°C to 100°C



Brass Metric to PG Adaptor

Smaller metric external to larger PG internal thread.

Material: Nickel Plated Brass
Thread Ext.: M12 - M63
Thread Int.: PG9 - PG48
Temp: -40°C to 100°C



Brass Metric Thread Enlarger

Smaller metric external to larger metric internal thread.

Material: Nickel Plated Brass
Thread Ext.: M12 - M50
Thread Int.: M16 - M63
Temp: -40°C to 100°C



Intrinsically Safe Brass Metric Thread Reducer

Explosion & water resistant nickel plated brass with large external thread and small internal thread.

Material: Knurled Nickel Plated Brass
Thread Ext.: M16 - M63
Thread Int.: M12 - M50
Temp: -20°C to 80°C
Certification: ATEX, IP68



Brass Metric Thread Enlarger - Small Internal

Larger metric external to smaller metric internal thread.

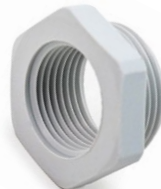
Material: Nickel Plated Brass
Thread Ext.: M16 - M63
Thread Int.: M12 - M50
Temp: -20°C to 80°C



Intrinsically Safe Polyamide Thread Reducer

Explosion, water & dust resistant polyamide with large external thread and small internal thread.

Material: Polyamide PA6
Thread Ext.: M16 - M63
Thread Int.: M12 - M50
Temp: -20°C to 80°C
Certification: ATEX, IP66



Polyamide Thread Reducer

Large external thread and small internal thread in light grey RAL 7035, PA6.

Material: Polyamide PA6 GF30
Thread Ext.: M16 - M63
Thread Int.: M12 - M50
Temp: -20°C to 80°C

CABLE GLAND ACCESSORIES - LOCK NUTS



Polyamide Hexagonal Locknut

For secure tightening of cable glands and accessories. Also available in black.

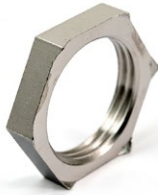
Material: Polyamide PA6 GF30
Thread: M12 - M63
Temp: -40°C to 100°C



Stainless Steel Hexagonal Locknut

For secure tightening of cable glands and accessories.

Material: 316 Stainless Steel
Thread: M12 - M63
Temp: -60°C to 200°C



Equipotential Brass Hexagonal Locknut

Cut through paint or powder coating for optimal electrical contact when securing EMC cable glands.

Material: Nickel Plated Brass
Thread: M12 - M63
Temp: -60°C to 200°C



Brass Hexagonal Locknut

For secure tightening of cable glands and accessories.

Material: Nickel Plated Brass
Thread: M12 - M63
Temp: -60°C to 200°C

This brochure lists our most popular items. Many more Cable Glands and Accessories are available.
Please contact us if you have not found what you are looking for in this brochure.



Tel: +61 8 8268-2733

www.npa.com.au

CABLE GLAND ACCESSORIES - PLUGS



Brass Hexagonal Plug

Close off unused cable glands and secure the plug from ingress.

Material: Nickel Plated Brass
Thread: M12 - M75
Temp: -60°C to 200°C



Polyamide Screw Plug

Fiberglass Reinforced Polyamide screw plugs. Available in light grey (RAL 7035) and black (RAL 9005).

Material: Polyamide PA6 GF30
Thread: M12 - M63
Temp: -30°C to 100°C



Intrinsically Safe Brass Screw Plug

Close off unused cable glands and secure the plug from ingress.

Material: Nickel Plated Brass
Thread: M12 - M63
Temp: -30°C to 80°C
Certification: DMT 99, ATEX, IP68

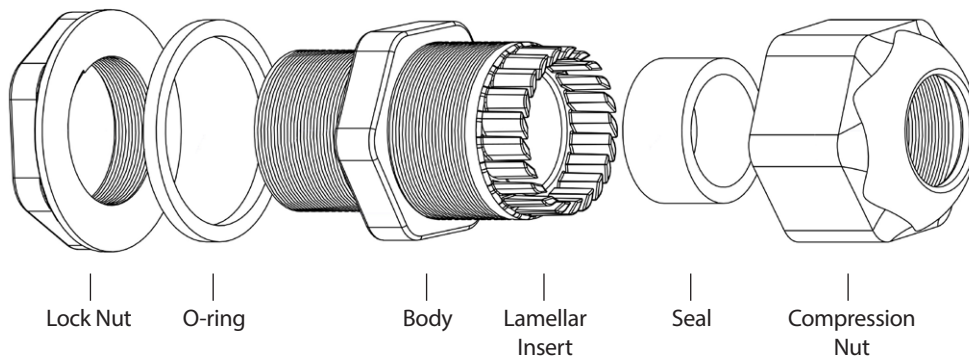


Polyamide Blanking Plug

Fiberglass Reinforced Polyamide plugs. Available in light grey (RAL 7035) and black (RAL 9005).

Material: Polyamide PA6 GF30
Thread: M12 - M63
Temp: -30°C to 100°C

Typical Cable Gland



NPA PTY LTD
10 Gray Street, Kilkenny
SOUTH AUSTRALIA 5009

NPA PTY LTD
operates a QUALITY
MANAGEMENT
SYSTEM which
complies with ISO
9001:2015



Tel: +61 8 8268-2733 | Fax +61 8 8268-1455 | sales@npa.com.au | www.npa.com.au

NPA PTY LTD is 100% Australian owned and operated.