

# GS R5000BT-5MQ

## Ring Bluetooth Image Mid-distance 2D Barcode Scanner

To satisfy the requirement of mid-range barcode scanning, we particularly have developed GS R5000BT-5MQ, which can scan at a distance of about 4.3 meters. The built-in high-performance Zebra imaging engine shows best-in-class scanning performance on 1D and 2D barcode.

Integrated dual-mode Bluetooth 4.0 technology with iOS & Android & Windows Compatible features not only significantly increase workers' productivity and reduce error rates, but also provides a perfect solution for applications such as cargo sorting and warehouse management.

GS R5000BT-5MQ uses a patented 180° rotating base design to meet different usage habits of hands, and free them. Workers can move freely in work. Vibration alerts, AI identifier recognition, real-time and batch processing modes, as well as wireless charging capabilities provide a more efficient scanning experience.



### FEATURE

- Scan 1D, 2D barcode labels on paper, phone or computer screen.
- The farthest scanning distance is 4.3 m / 172 in (100 mil Code 39).
- Ring Bluetooth image long-distance 2D barcode scanner.
- Dual-mode Bluetooth 4.0 communication.
- iOS & Android & Windows Compatible.
- Real time and Batch mode support.
- Multi trigger mode (Manual & Automatic & Software command).
- Wearable design to free your hands.
- Rotating function to meet the different usage habits of left and right hands.
- One-click on/off.
- Wireless charging function.

### APPLICATION SCENARIOS



Warehouse



Sorting



Logistics



Ports and Intermodal



Parcel Express



Distribution Centers

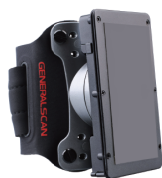


Manufacturing

### ACCESSORIES



Multi-slots Wireless Charging Pad  
GS MC5000



Wearable Armband  
GS AB1000  
GS AB2000



Watch Powerbank  
GS PB300



Bluetooth Dongle  
GS D100BT-Plus

# GS R5000BT-5MQ

## Ring Bluetooth Image Mid-distance 2D Barcode Scanner

### PHYSICAL CHARACTERISTICS

<b>Dimensions</b>	51 mm (L) × 39 mm (W) × 45 mm (D) 2.0 in. (L) × 1.5 in. (W) × 1.8 in. (D)
<b>Weight</b>	48 g / 1.69 oz.
<b>Battery Capacity</b>	500 mAh
<b>Charging</b>	5W ( 5 V / 1 A )
<b>Charge Time</b>	2.2 hours
<b>Battery Life</b>	6.0 hours ( scan 1 time per 5 seconds )
<b>Notification</b>	LED, Beeper, Vibration

### WIRELESS CHARGING

<b>Wireless Charging Power</b>	3W
<b>Wireless Charge Time</b>	2.4 hours

### PERFORMANCE CHARACTERISTICS

<b>Optical Resolution</b>	1280 X 960 pixels
<b>Sensor</b>	2D CMOS Image
<b>Scan View</b>	Skew±60° , Pitch±60° , Roll 360°
<b>Field of View</b>	Horizontal: 31° , Vertical: 23°
<b>Illumination</b>	2 White warm LEDs
<b>Aiming Element</b>	650nm cross laser line
<b>Focal Distance</b>	From front of engine: 360mm / 14.2 in.
<b>Ambient Light</b>	107 , 639 lux
<b>Supported Symbologies</b>	1D: Codabar, Code 11, Code 32, Code 128, Code 39, IATA 2 of 5, Interleaved 2 of 5, GS1 DataBar (RSS), Hong Kong 2 of 5, Matrix 2 of 5, MSI Plessey, Pharmacode, NEC 2 of 5, Plessey, Straight 2 of 5, Telepen, Trioptic, UPC/EAN/JAN 2D: Aztec Code, Data Matrix, Han Xin, MaxiCode, Micro QR, QR Code
<b>Interface</b>	USB , Bluetooth

### BLUETOOTH

<b>Bluetooth Profiles</b>	Classic Bluetooth( BR / EDR): HID Keyboard and SPP Bluetooth low energy(BLE):BLE GATT
<b>Bluetooth Range</b>	Connect to terminal above 65.6ft./20m, Connect to D100BT-PLUS Dongle above 131ft./40m(without obstructions)
<b>Bluetooth OTA</b>	Bluetooth SPP OTA

### USB

<b>USB Interface</b>	Micro USB 2.0
<b>USB Profiles</b>	HID Keyboard and Virtual com port
<b>Multilingual Keyboard</b>	USB HID mode supports multilingual keyboards

### ENVIRONMENT CHARACTERISTICS

<b>Operating Temperature</b>	5°F to + 131°F / -15°C to 55°C
<b>Storage Temperature</b>	-22°F to +149°F / -30°C to +65°C
<b>Humidity</b>	5% to 90% non-condensing
<b>Drop Rating</b>	In protective case, multiple 4.9 ft./ 1.5 m drops to concrete over the operating temperature range
<b>Certification</b>	CE , FCC , RoHS

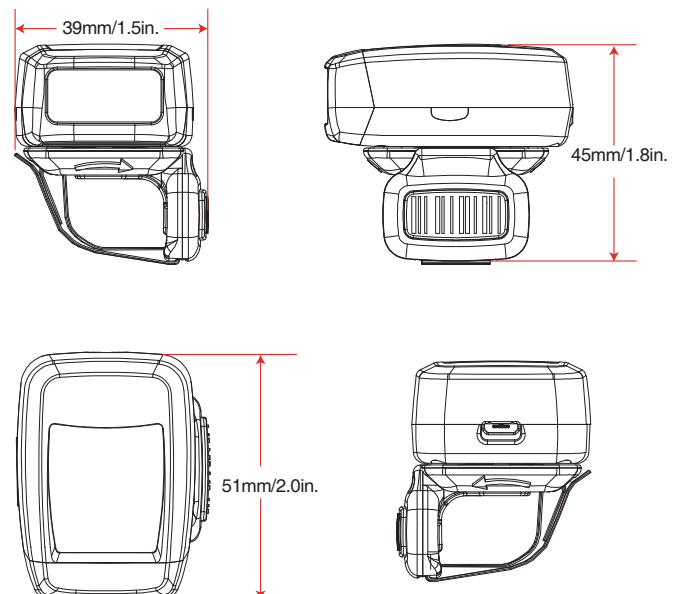
### DECODE RANGES

Symbology	Range
5 mil Code 128	188mm (7.4 in) ~ 406mm (16.0 in)
5 mil PDF417	206mm (8.1 in) ~ 333mm (13.1 in)
7.5 mil DataMatrix	211mm (8.3 in) ~ 325mm (12.8 in)
10 mil DataMatrix	178mm (7.0 in) ~ 432mm (17.0 in)
100% UPCA	58mm (2.3 in) ~ 965mm (38.0 in)
15 mil Code 128	102mm (4.0 in) ~ 1017mm (40.0 in)
20 mil Code 39	53mm (2.1 in) ~ 1372mm (54.0 in)
100 mil Code 39	279mm (11 in) ~ 4369mm (172.0 in)
160 mil DataMatrix	22mm (11.5 in) ~ 3505mm (138.0 in)

### SOFTWARE SUPPORT

Generalscan Keyboard Pro , Generalscan SDK Demo,  
Generalscan OTA Tools , Generalscan iCode , Generalscan ScanBuddy

### THREE-VIEW DRAWING



## Generalscan Inc.

Add:200 Buckelew Ave, Jamesburg, NJ

Postcode: 08831

Tel: +1 1469583-7367