

L30i-VET Veterinary Color Doppler Ultrasound Diagnostic System

Advanced Veterinary Imaging for Accurate Diagnosis and Clinical Efficiency



Product Overview

The L30i-VET Veterinary Color Doppler Ultrasound Diagnostic System is a portable, high-performance ultrasound platform designed to meet the demands of modern veterinary practice. Combining advanced imaging technologies, intelligent workflow tools, and a lightweight ergonomic design, the system delivers reliable diagnostic performance for small animal clinics, veterinary hospitals, emergency care, and specialty practices.

Built on an integrated Windows 10 platform with a high-speed SSD and long-lasting battery operation, the L30i-VET provides fast boot times, efficient workflow management, and exceptional image quality for a wide range of clinical applications.

Multi-Scenario Applications

- Small Animal Clinics
- Veterinary Hospitals
- Emergency & Critical Care
- Reproductive & Abdominal Examinations
- Cardiac Assessments
- General Veterinary Imaging

Key Features

Premium Imaging Technology

- Color Doppler Imaging (CFM)
- Harmonic Imaging Technology
- Spatial Compound Imaging Technology
- Multi-Beam Synthesizer
- Pure Filter Technology
- THI (Tissue Harmonic Imaging)
- Real-Time Triplex Imaging

Intelligent Workflow

- Auto IMT Measurement
- Automatic PW Spectral Envelope
- iWorks Pet Patient Management System
- Optimized Imaging Presets
- Fast Boot & Shutdown Performance

Superior Clinical Utility

- Excellent penetration and image clarity
- Uniform imaging performance
- Full-body veterinary ultrasound applications
- Comprehensive diagnostic capability

Ergonomic Design

- 15-inch HD Display
- 180° Wide-Angle Hinge
- Adjustable Display Panel (0–90°)
- Compact Portable Design
- HDMI Output Interface



APS TECHNOLOGY

APS Technology Australia Pty Ltd, Sydney NSW, Australia

www.aps-technology.com.au | +61-048191-2826 | info@aps-technology.com.au



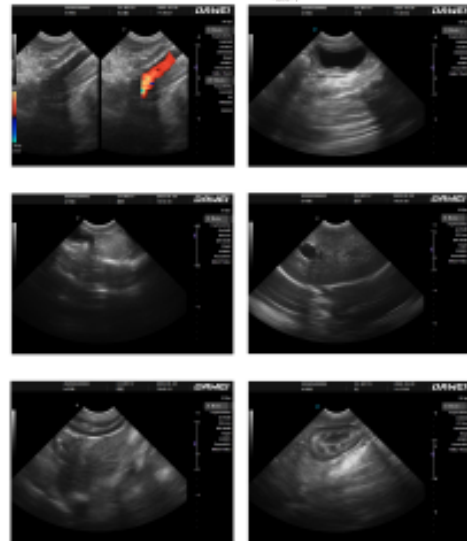
1



Key Parameters

Specification	L30i-VET
Display	15-inch HD Monitor
Display Hinge	180° Wide-Angle
Operating System	Windows 10
Storage	≥128GB SSD
Battery	Built-in Lithium-Ion
Continuous Scanning	≥5 Hours
Light Usage Runtime	Up to 6 Hours
Cine Loop	≥600 Frames
USB Interface	USB 3.0
Image Export	Multiple Formats
Imaging Workstation	Included

Model Snapshot



General Specifications

Feature	Details
System Type	Veterinary Color Doppler Ultrasound
Imaging Modes	B, M, Color Doppler, Triplex
Storage	High-Speed SSD
Connectivity	USB 3.0, HDMI
Workflow Software	iWorks Pet Management
Power Source	Rechargeable Lithium Battery
Application	Full-Body Veterinary Imaging

Standard Features

- Color Doppler Imaging (CFM)
- M-Mode
- THI
- Trapezoid Imaging
- Needle Puncture Guidance
- Multi-Beam Synthesizer
- Harmonic Imaging
- Spatial Compound Imaging
- Pure Filter Technology
- Automatic Measurements
- Optimized Exam Presets
- 15" HD Display
- Color Doppler Imaging
- Windows 10 Platform
- 128GB SSD Storage
- Long Battery Operation
- USB 3.0 Connectivity
- Fast Boot Technology
- Pet Management System

Performance Highlights

Efficient Workflow

- Fast system startup (~30 sec)
- Fast shutdown (~10 sec)
- Preset exam protocols
- Intelligent patient management

Long Battery Life

- ≥5 hours continuous scanning
- Up to 6 hours light-use operation
- Fast charging technology

High Image Quality

- Strong penetration capability
- Uniform image processing
- Reliable diagnostic performance

